



Snowmobile Dual/Quad Zone



For the following kits: 210212 and 210214

Applying the Heaters:

1. Remove both grips.
2. Clean the handlebars; be sure to remove any residue from the bars.
3. Mount the heaters directly to the bars with the wires routed towards the center of the sled.
4. Apply a high temperature adhesive (250°F or higher) to the inside of both grips. Install the grips over the heaters and let the adhesive cure. Be sure to wipe off any excess adhesive.
5. Drill a 7/32" hole in the lower pivot arm of the throttle; 1 1/4" from the pivot hole.

Note: Some throttles may already have this hole)

6. Clean the back of the throttle with the included sand paper, then alcohol. Route the thumb heater leads through the hole in the throttle.
7. Mount the thumb heater on the inside of the throttle.
8. Clean the back of the thumb heater, and apply insulation patch over the back of the thumb heater. Use tie wrap to secure the wires to the handlebars. (shown in **Figure 1**)

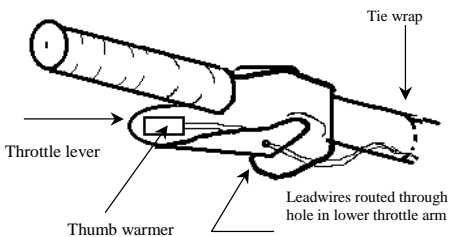


Figure 1: Throttle position

Mounting the Controller:

Option A – Handlebar clamp (**Figure 2**)

Option B – Panel mount (**Figure 3**)

Option A: Handlebar Clamp

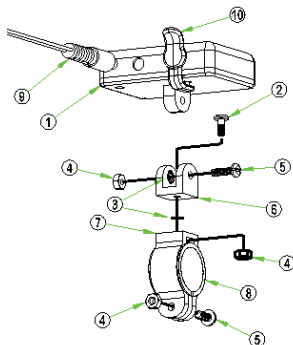


Figure 2: Handlebar Mount

1. For 7/8" handlebars, insert the rubber spacer (8) into handlebar mount (7). Slide the handlebar mount over the bar. Insert a nut (4) into the side of the mount with the 6 sided recess. Install screw (5) and tighten.
2. Attach the Pivot (6) to the handlebar mount with the shorter screw (2). Install a lock washer (3) between the two. Rotate the pivot to allow the best view for the driver, and tighten the screw (2).
3. Place the controller (1) in the slot of the pivot (6) and secure with screw (5) and nut (4). Position the controller to allow the best view for the driver.
4. Using the tie wraps, route the wires from the Controller, Grips, and Thumb Warmer to a common connection point.

Option B: Panel/flush mount

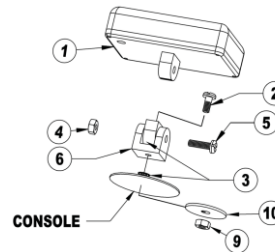


Figure 3: Panel/ Flush Mount

1. Choose a point on a panel or surface where the Controller will be mounted (NOT the gas tank) and drill a 5/32" hole in the panel.
2. Install the Pivot (6) to the panel with the screw (2), lock washer (3), washer (10), and locking nut (9). The lock washer should go between the pivot and the chosen panel to stop the pivot from rotating.
3. Attach the Controller (1) to the Pivot (6) with the screw (5), lock washer (3) and nut (4) placed in the 6 sided recess of the Pivot.
4. Rotate the Controller to the best angle for viewing and tighten the screw (5).
5. Using the cable ties, route the wires from the Controller, Grips, and Thumb Warmer to a common connection point.

Electrical Connections

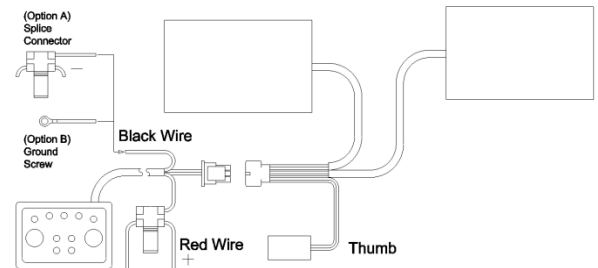


Figure 4: Electrical Schematic

1. Disconnect positive cable from the battery.
2. Connect the thumb and left side heaters into the white 6 pin connector.
3. Plug the white 6 pin connector from the controller into the white 6 pin from the grips and power port as shown in **Figure 4**.
4. Connect the Red wire from the controller to a 12V accessory wire via a red tap connector.
5. Connect the black wire to ground, via a red tap connector. (Do not ground directly to the frame or to a rubber isolated component)
6. Reconnect the positive cable to the battery.

NOTE: Do not operate kit with a battery tender connected to the battery.

Operating Instructions

1. Turn the ignition on, the LED above "GRIPS" should be on.
2. Select your heat level with the (≈) button. Press the button 5 times for level 5, and once more to turn it off.
3. Press the (Select) button to switch between the individual zones. The LED above "Grips" will turn off, and the LED above "Thumb" will turn on. Now you can controller the thumb heat level.
4. **(For Quad Zone only)** Press the (Select) button again to control the "AUX1" heat level, and again to control the "AUX2" heat level. **NOTE:** All levels are independent, and can be run at their own heat level.
5. The controller will shut off after 2 hours if no adjustments are made. To reactive the controller, press the (Select) button and select your heat level.
6. Hold down both the (Select) and the (≈) buttons for 3 seconds to dim the LED's for night or day operation.
7. Hold the (Select) button for 3 seconds to turn the controller on or off.