



Quick Detach Saddlebag Brackets

KEY CODE NUMBER _____
(Save this number for future key identification)

Applications REV. 11/16/2018

Triumph Bonneville Speedmaster - **Model SPDM-R1B OR SPDM-R1C**

Before you begin, read and understand these instructions and check to be sure all parts are accounted for.

<u>Qty.</u>	<u>Part Description</u>
2	Easy Brackets (ID number 18, stamped on brackets)
2	SPMMS-B OR SPMMS-C Plates
4	Docking Posts
4	8mm SS Socket Head Bolts
4	8mm SS Button Head Bolts
6	8mm SS spacers
2	8 mm Nylok nuts
8	3/8 x 1 Black Button Head Bolts
8	3/8 Nylon Locking Nuts
8	3/8 Fender Washers
2	Keys

Installation Instructions

1. The Mounting System for “The Speedmaster” (Model SPMMS-B OR SPMMS-C) sold by Great Bike Bear, Inc. must be installed with the installation of the Easy Brackets.
2. Install the SPMMS-B OR SPMMS-C plate by removing the 2 bolts at the grab bar and the rear bolt at the fender rail. Install the plate at the grab bar using the (2) short spacers and the (2) 8mm SS button head bolts. Do not tighten at this time. Using the 8x70mm SS socket head bolt, the 8mm docking post and the long spacer, attach the front docking post thru the front hole in the SPMMS-B OR SPMMS-C plate into the rear fender bolt hole.
3. Using the 8x30mm SS socket head bolt, the 8mm docking post and the 8mm Nylok nut attach the docking post to the rear hole in the SPMMS-B OR SPMMS-C plate. Tighten all bolts at this time.
4. Repeat steps 1, 2, and 3 on the LH side of the fender.
5. On the right side install the EASY BRACKETS on the docking posts. **Note:** Use the key provided to open the cam lock prior to installation on the docking posts. The key can not be removed until the cam lock is fully engaged under the docking post.
6. Hold the RH saddlebag against the EASY BRACKET. Position the saddlebag as desired noting the clearances from the seat, turn signals and any lower obstructions such as chain guards, axel nuts, and etc. Mark the outer edge of the bracket on the saddlebag. Remove the EASY BRACKET from the motorcycle.
7. Place the bracket on the saddlebag within the outline and drill the 4 holes for mounting. Attach the bracket to the saddlebag using the (4) 3/8 x 1 black button head bolts, (4) 3/8 fender washers and (4) 3/8 Nylon locking nuts (**All 4 mounting points MUST be utilized**). Install the completed RH saddlebag with EASY BRACKETS on the motorcycle. **Note: The cam lock must be fully engaged and the key removed to ensure the EASY BRACKETS are properly installed and ready for use.**
8. Repeat steps 5, 6, and 7 on the LH side of the fender.

Notice to Consumer

Do NOT exceed 15 lbs. of total weight on the EASY BRACKET saddlebag removal system.

Neither the manufacturer distributor nor retailer of the EASY BRACKETS makes any express warranties of any kind with respect to the EASY BRACKETS. Any implied warranty does not cover defects caused by modification or alterations of the EASY BRACKETS or caused by physical abuse to or misuse of the EASY BRACKETS or its use and/or operation in a manner contrary to the accompanying instructions. Failure to install and/or use the EASY BRACKETS in the manner described by the accompanying instructions shall render all warranties, expressed and/or implied, void and release the manufacturer, distributor and retailer from any and all liability arising from the use of the EASY BRACKETS.

SEE REVERSE SIDE FOR ILLUSTRATIONS

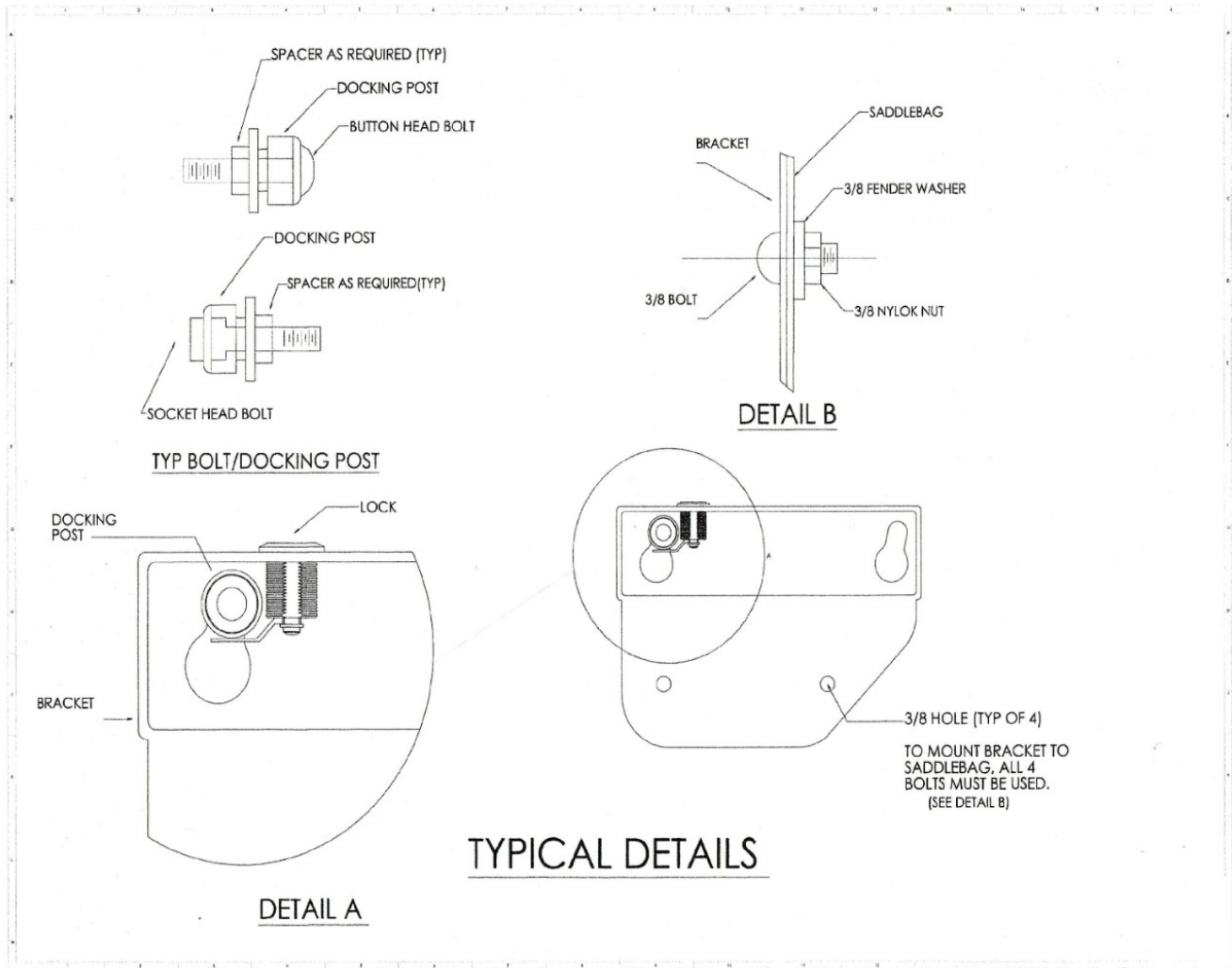


Figure 1& 2 MOUNTING PLATE AND EB