



FEY-15R1-K

Fender Eliminator 2015 Yamaha YZF-R1

Parts List:

- | | | | |
|-----------------------------|---|-------------------------|---|
| • Fender Eliminator Bracket | 1 | • 6 x 35 mm Allen Bolts | 3 |
| • Plastic Receiver Plate | 1 | • 6mm Nyloc Nuts | 3 |
| • Rubber Grommet | 1 | | |

<<<<< IT IS RECOMMENDED THAT THIS PRODUCT BE INSTALLED BY A QUALIFIED TECHNICIAN >>>>>

- 1) Remove the passenger seat.
- 2) Remove the front seat by folding the 2 back corners and removing the two 5mm allen bolts.
- 3) Remove the 4 plastic philips head rivets holding down the center plastic cover between the 2 seats. **Photo 1.**
- 4) Once the cover is removed you will find the turn signal plugs that need to be disconnected. **Photo 2.**

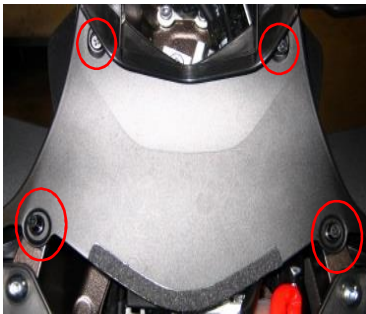


Photo 1



Photo 2

- 5) Remove the two 5mm allen bolts holding down the tail light support. **Photo 3.** Once removed, disconnect the turn signal wire hold downs to free up the wiring for the stock fender removal.



Photo 3

- 6) Remove the 3 allen bolts from the rear fender assembly. **Photo 4.** Be sure to hold the fender to prevent it from falling once the bolts are removed.

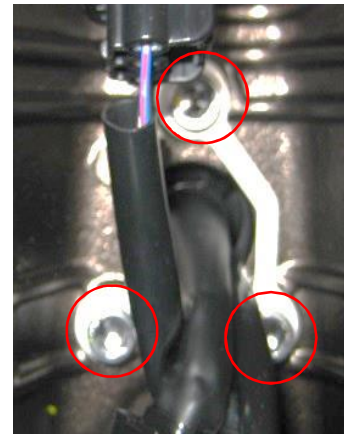


Photo 4

- 7) The Graves fender eliminator is set up with turn signal mounts attached to accommodate the stock turn signals.

*Moving the turn signal mounts to the outermost hole position will allow the use of the Graves flush mount marker lights. (Graves part # TS401C1) **Photo 5**



Photo 5

*If you are using a taillight integrated kit you can remove the turn signal brackets.

- 8) If using the stock turn signals, remove them from the rear fender by removing the center wire cap and the 2 plastic signal retainers at the mounting point of the signals. Carefully remove the signals from their mounting holes.
- 9) Re-install the stock signals in reverse sequence.
- 10) After the turn signals have been installed, feed the turn signal wires through the center hole and through the hole in the supplied grommet. **Photo 6** Install the grommet into the center hole of the fender eliminator bracket. This will keep the wires tidy and prevent dirt and water from getting up under the fender eliminator bracket.



Photo 6

- 11) Using the supplied button head allen bolts, install the fender eliminator bracket with the plastic receiver plate in between the bracket and the motorcycle. Secure with the supplied nyloc nuts. **Photo 7**



Photo 7

- 12) Re-install the wire hold downs and the seats in reverse order.

Must haves for your new 2015 R1

Clear, Flush Mount Marker Lights
compliment your new Fender Eliminator



TS401C1

Have you seen the new
Carbon Fiber Engine Guard?



EGY-15R1-C

How does one of the new Exhaust options
sound? Visit our website and find out!

2015 R1 Cat Eliminator Exhaust



EXY-15R1-CETC