



EXY-17FZ10-CETC

Cat-Eliminator Ti/ Carbon Yamaha FZ-10 2017

Parts List

- | | | | |
|-----------------------|---|------------|---|
| • Carbon Silencer | 1 | Spring | 1 |
| • Cat Eliminator Pipe | 1 | Heel Guard | 1 |
| • 8 mm Nyloc Nut | 1 | | |

<<<<< IT IS RECOMMENDED THAT THIS PRODUCT BE INSTALLED BY A QUALIFIED TECHNICIAN >>>>>

- 1) Remove the seat
- 2) There are 3 options for the exup servo motor.
 - 1) If you have the Graves Flash Tune . the exup motor can be disabled through the Flash Tune which allows you to remove the servo motor.
 - 2) Us the Graves Exup Eliminator (part # ELY-U-EX)
 - 3) Leave the exup servo motor in and remove the cables only. Leaving the motor in place and plugged in.
- 4) Loosen the cables at the catalytic converter to retain the slack in the cables and carefully pull them out from the bottom
- 4) Unplug and remove the left O² sensor. Carefully remove the wire.
- 5) The right O² sensor plug is located under the gas tank. In order to prop up the tank, remove the outer grill ring by removing the 2 push pins on the back. Pull the grill ring straight forward **Photo 2** .

*****WARNING*****
One of the 3 options must be performed before turning the key and starting your FZ-10.

- 3) If you are going to leave the exup servo motor in place you need to remove the cables
 - 1) Remove the rubber hold down strap. **Photo 1**.

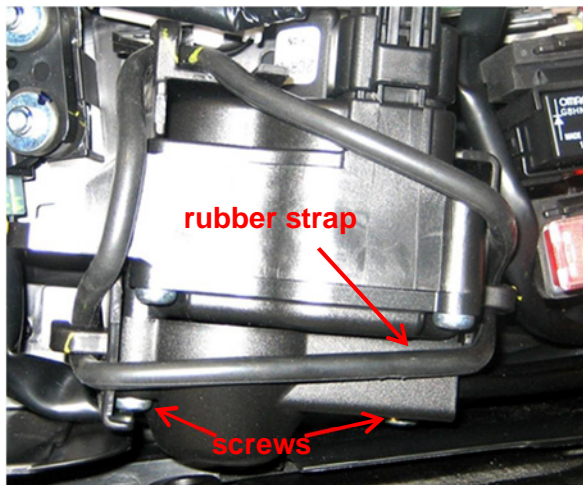


Photo 1

- 2) Remove the cover for the cable with the 2 phillips head screws. **Photo 1**
- 3) Remove the lower heat shield covering the servo cables at the catalytic converter with the 3 . 5mm allen bolts.

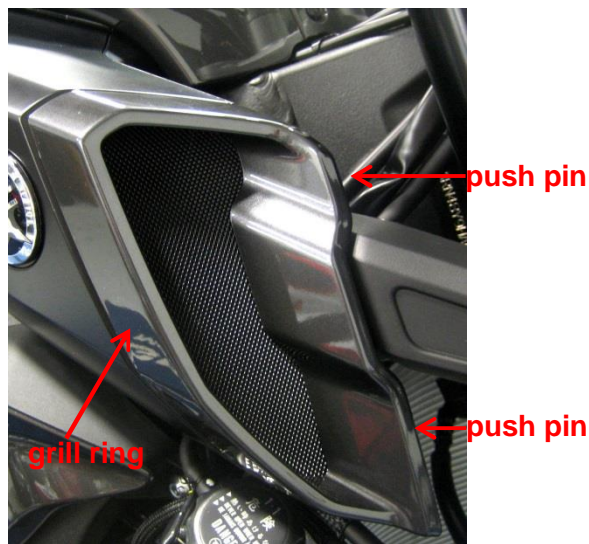


Photo 2

- 6) Remove the 2 . 4mm allen head bolts on the left and right tank side cover. Carefully lift up and pull out to remove. **Photo 3**.



Photo 3

The purchaser releases Graves Motorsports, Inc. from all liabilities pertaining to the installation and use of purchased parts. Purchaser recognizes that any alteration and/or modifications to the vehicle may increase the risk of injury or accident. **This product is intended for Closed Course Competition Use Only** and may render the vehicle illegal for use on public roads.



- 7) Remove the center part of the tank cover by releasing the 2 push pins and carefully pulling the cover straight forward. **Photo 4.**

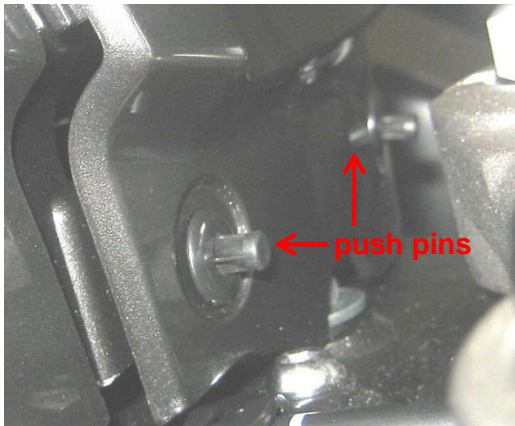


Photo 4

Remove the side covers next. There are 3 screws per side. One 4mm bolt, one 10mm bolt and one phillips head screw. **Photo 5.**



Photo 5

You don't need to remove the side cover completely. Just enough to remove the lower head bolt on each side of the tank. Once the two 10mm bolts are out, you can prop the tank up. Locate the O² sensor plug and unplug it. Pull the O² sensor wire out.

- 8) Remove the stock muffler at the catalytic converter. Slide the muffler straight back to remove
- 9) To remove the catalytic converter, loosen the 2 clamps that join the head pipe to the catalytic converter. On the right side, locate the two 6mm allen bolts to remove. Remove the top mount behind the rear pedal. On the left side there will be one 6mm allen head bolt to remove behind the side stand.
- 10) Install the Graves Cat Eliminator pipe to the stock head pipe. Line up the mounting tab on the Graves Cat Eliminator pipe to the stock catalytic converter mount on the frame. This mount can be loosened to help you align the mounting tab. The stock clamps will not be used. Install with the stock fasteners.

- 11) Loosen the stock muffler mount and remove the heel guard and replace it with the Graves heel guard using all the stock fasteners.
- 12) Slide the Graves Silencer onto the Cat Eliminator pipe. Use the supplied hardware and the stock fasteners when attaching the silencer to the foot peg rest mount. Once you have everything lined up, torque all the fasteners and install the spring from the Cat Eliminator to the Silencer.



Photo 6.

Photo 6

- 13) Reinstall in the reverse sequence, the gas tank, gas tank covers and seat.
- 14) Before starting your FZ-10, make sure to wipe off any dirt or fingerprints from the Graves Cat Eliminator Exhaust System. Failure to do so may cause permanent staining of the system.

NOTE: Remapping "flashing" your FZ-10 ecu will be required to eliminate any O² sensor codes and to ensure proper performance of your FZ-10.

We recommend FTECU Flash Tune.

**Also Available for your FZ-10
Graves Motorsports Frame Sliders**



FSY-15R1-K

The purchaser releases Graves Motorsports, Inc. from all liabilities pertaining to the installation and use of purchased parts. Purchaser recognizes that any alteration and/or modifications to the vehicle may increase the risk of injury or accident. **This product is intended for Closed Course Competition Use Only** and may render the vehicle illegal for use on public roads.