

# TAIL RACK

Bolts to plastic rear fender, creating solid anchor points for Giant Loop gear.



**GIANT LOOP®**

- Includes full stainless steel mounting hardware kit
- Quick, easy installation
- Fits virtually every dirt, dualsport and enduro bike

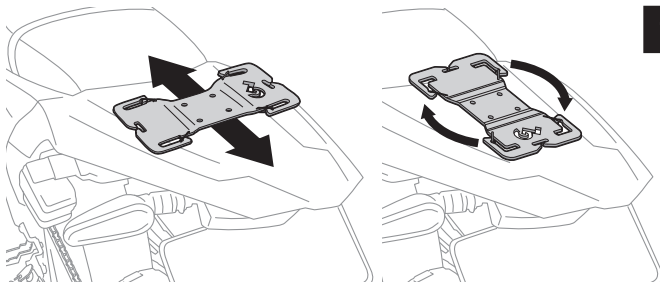


**GO LIGHT. GO FAST. GO FAR.**

# INSTALLATION INSTRUCTIONS



NOTE: Failure to follow recommended mounting and installation instructions voids warranty. Manufacturer is not liable for any damage, injury or death that results from improper use and installation of products.

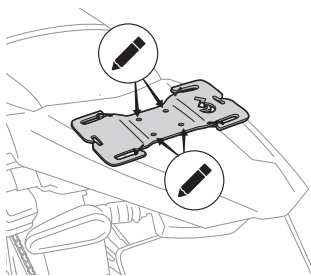


## 1 Decide which position and configuration works best for your bike and gear setup.

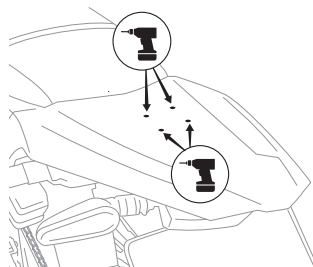
Orient and locate the tail rack for the ideal position of your gear, allowing room for maneuvering, and ensuring that the drill holes are not going to hit critical hardware or electrical wiring. Mounting Tail Rack as close to seat as possible is best.

NOTE: Tail Rack may be mounted lengthwise or widthwise, depending on your gear and preferences.

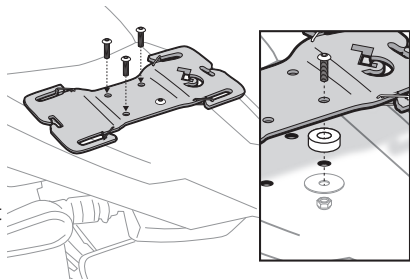
## 2 Mark hole positions with a pen or pencil.



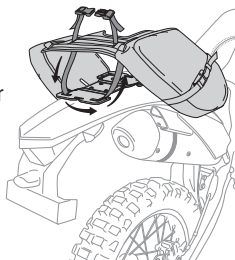
## 3 Remove the Tail Rack and drill holes through the fender. Double check positions under fender before drilling to ensure wiring or other components will not be damaged.



## 4 Using the included hardware, secure the Tail Rack with the round headed bolts on top, the spacer between the Tail Rack and fender, and washer and nut on the underside. We recommend using thread lock to prevent vibrations from loosening bolts on the trail.



## 5 CAUTION: Tail Rack is design to provide secure anchor points for Giant Loop Saddlebags, NOT to support heavy loads. Limit total load to 10 lbs. maximum.



### RECOMMENDED OPTIONAL ACCESSORIES



#### Possibles Pouch

Straps to front or back of Panniers, creating 3.5-liter waterproof, quickly accessible external pockets.



#### Klamath Tail Rack Pack

Like a tank bag for the rear of bike — keeps 4.0 liters of gear organized and easily accessible.



#### Pronghorn Straps

Heavy-duty tension straps solve a million problems.

