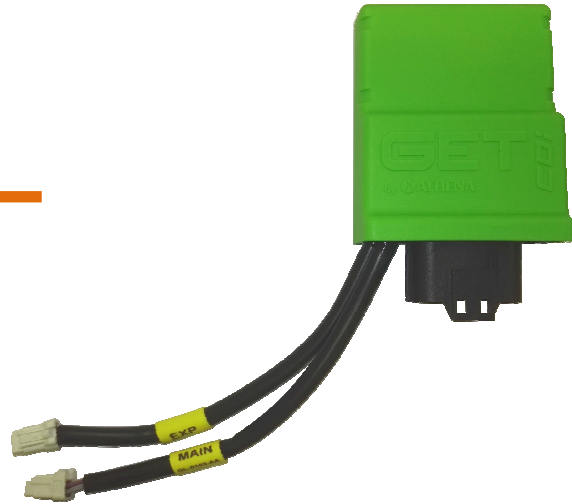




# HIGH PERFORMANCE CDI UNIT: INSTALLATION INSTRUCTIONS





## Features / benefits

	<ul style="list-style-type: none"><li>• <b>High Performance CDI Unit</b></li><li>• Two preinstalled ignition Maps ( MAP1= maximum power , MAP2 = soft power) directly selectable by supplied handlebar switch</li><li>• Tachometer and TPS output signals for data logging systems; input for quick shifter. “Power jet” output where available (contact Athena for info)</li></ul>
---	---

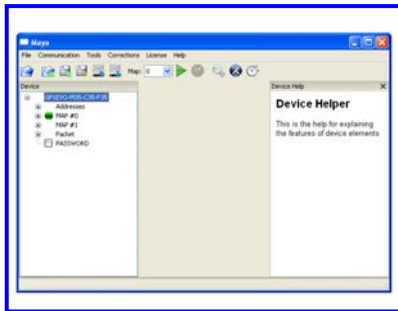
## Installation


	<ol style="list-style-type: none"><li>1- Find OEM ECU</li><li>2- Replace OEM ECU with GET CDI ECU: make sure that the ECU connector is fully engaged</li><li>3- Connect supplied MAP Switch to ECU EXP connector</li></ol>
---	--

## WARNINGS

 	<ul style="list-style-type: none"><li>• <b>RACE USE ONLY POWER KIT !!!</b></li></ul>
	<ul style="list-style-type: none"><li>• Follow the instructions described in this manual to prevent vehicle damage or loss of performance</li></ul>
	<ul style="list-style-type: none"><li>• Don't change or modify the parts supplied by Athena</li></ul>
	<ul style="list-style-type: none"><li>• <b>Execute the installation when the engine is cold</b></li></ul>
	<ul style="list-style-type: none"><li>• <b>During installation avoid that any part installed interferes with hot engine parts, driving parts or with the driver</b></li></ul>
	<ul style="list-style-type: none"><li>• No high-pressure washer on the GET ECU</li></ul>

## Accessories (sold separately)




 Maya Software



 GL-0163-AA CDI Programming Cable



 Quick shifter sensor