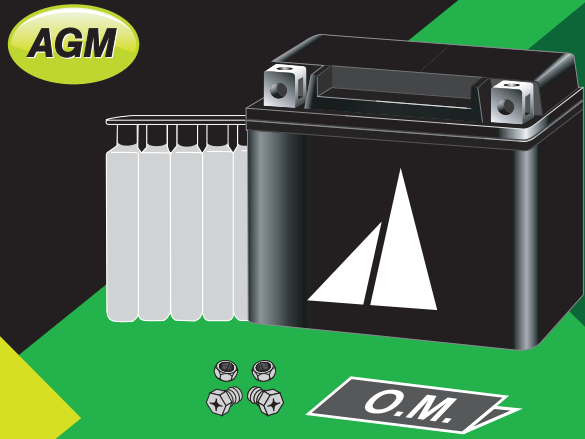


OWNER'S MANUAL

FILLING AND INSTALLATION INSTRUCTIONS



MAINTENANCE-FREE AGM BATTERY



SULFURIC ACID can cause blindness or severe burns.



SHIELD EYES. EXPLOSIVE GASES can cause blindness or injury.



Danger of explosion Ensure proper ventilation



No sparks, flames, or smoking.



Keep out of the reach of children.



Return old batteries for recycling.
Never dispose of batteries as waste.



Read the instruction manual carefully and follow all instructions and warnings. Keep the instruction manual for future reference.



Flush eyes immediately with water. Get medical help fast.

PROPOSITION 65 WARNING Battery posts, terminals, and related accessories contain lead and lead compounds, chemicals known to the State of California to cause cancer and reproductive harm. Batteries also contain other chemicals known to the State of California to cause cancer. Wash hands after handling.



BATTERY FLUID, ACID UN2796

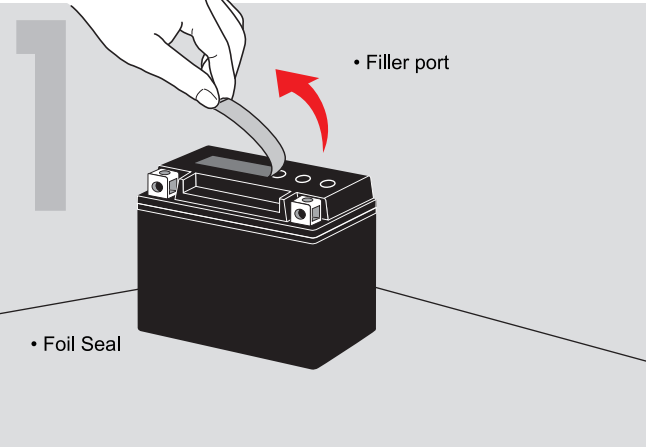


Battery fluid,
sulfuric acid

DANGER

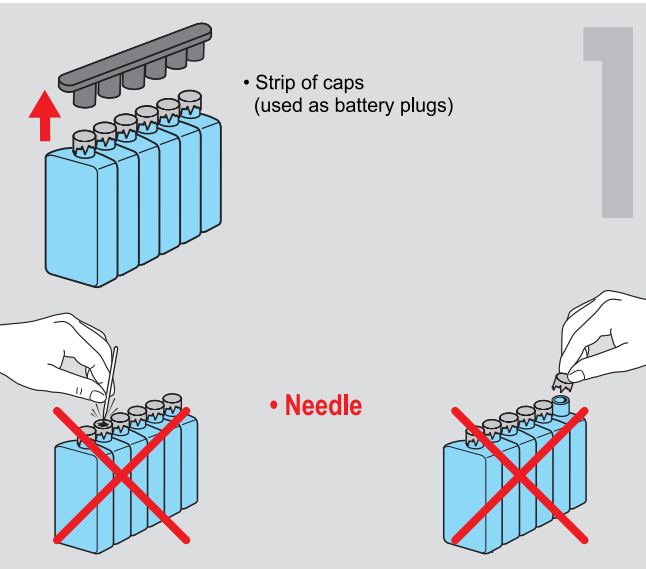
USE ENTIRE CONTENTS ON OPENING.
THIS CONTAINER IS NOT CHILD-RESISTANT ONCE OPENED.

CAUSES BURNS. DANGEROUS FUMES FORM WHEN MIXED WITH OTHER PRODUCTS. **Do not mix with other products that react with the chemical product, such as drain cleaners.** Do not swallow. Do not get in eyes. Do not get on skin or clothing. Do not breathe fumes. **Handle with care. Keep out of reach of children.** Wear a mask, rubber gloves and safety glasses. Use only in well ventilated area. **FIRST AID TREATMENT:** Contains Sulfuric acid. If swallowed, call Poison Control Centre or doctor immediately. Do not induce vomiting. **If in eyes, rinse with water for 15 minutes.** If on skin, rinse well with water. If on clothes, remove clothes. If breathed in, move person to fresh air.



1 PREPARING THE BATTERY

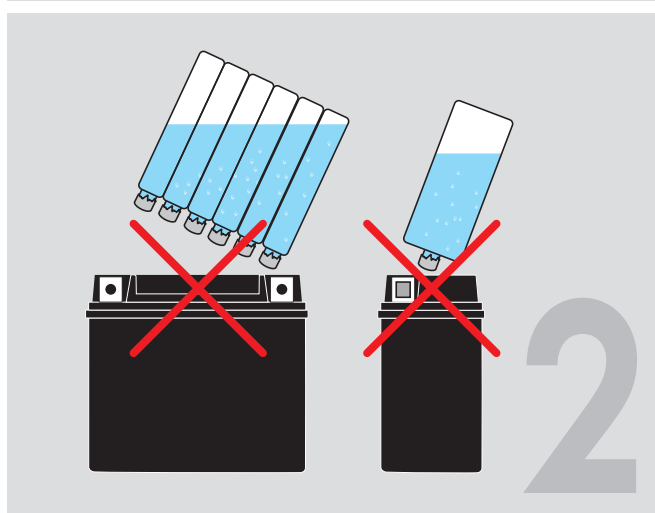
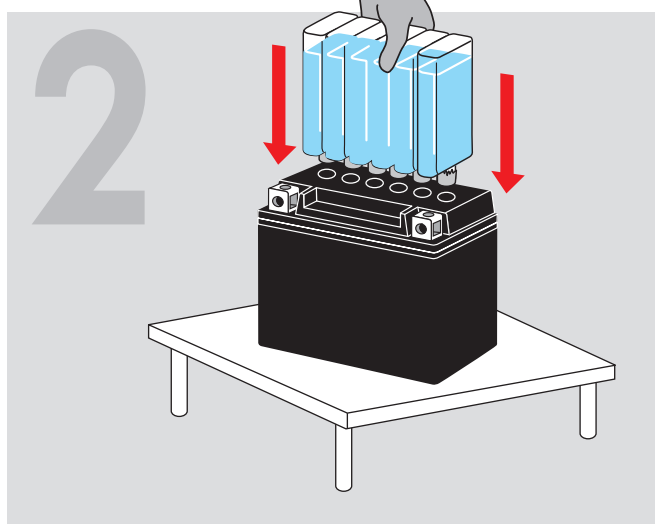
Place battery on a level surface. Remove the foil seal.



1 PREPARING THE ELECTROLYTE

Remove the electrolyte bottle from the carton. Remove and retain sealing plugs for later use.

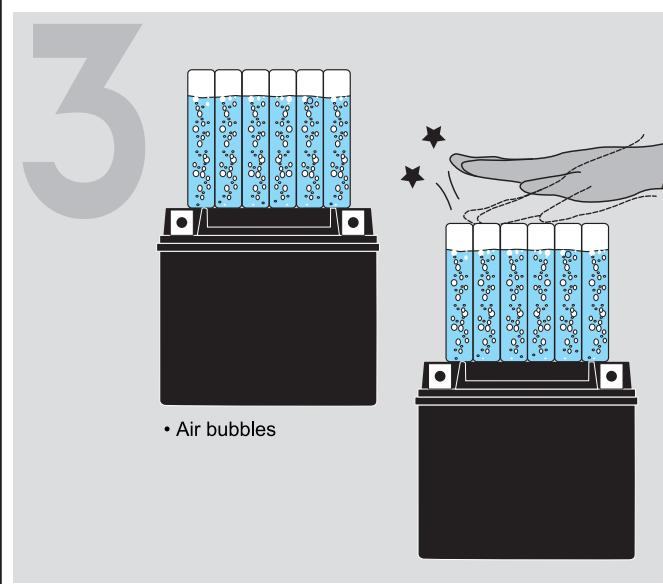
Note Do not peel or pierce the sealed areas.



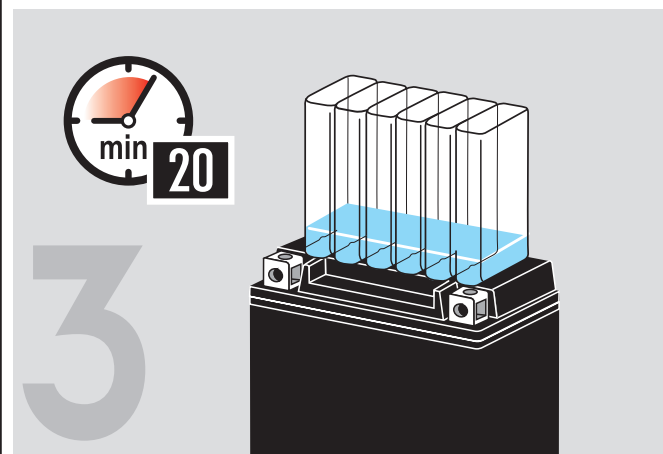
2 PROCEDURE FOR FILLING BATTERY WITH ACID

Place electrolyte container upside down with the six sealed areas **inline with** the six filler ports of the battery. **Push** the container **down strong** enough to break the seals. Now the electrolyte should start to flow.

Note Do not tilt the container as the electrolyte flow may be interrupted and stop flowing.



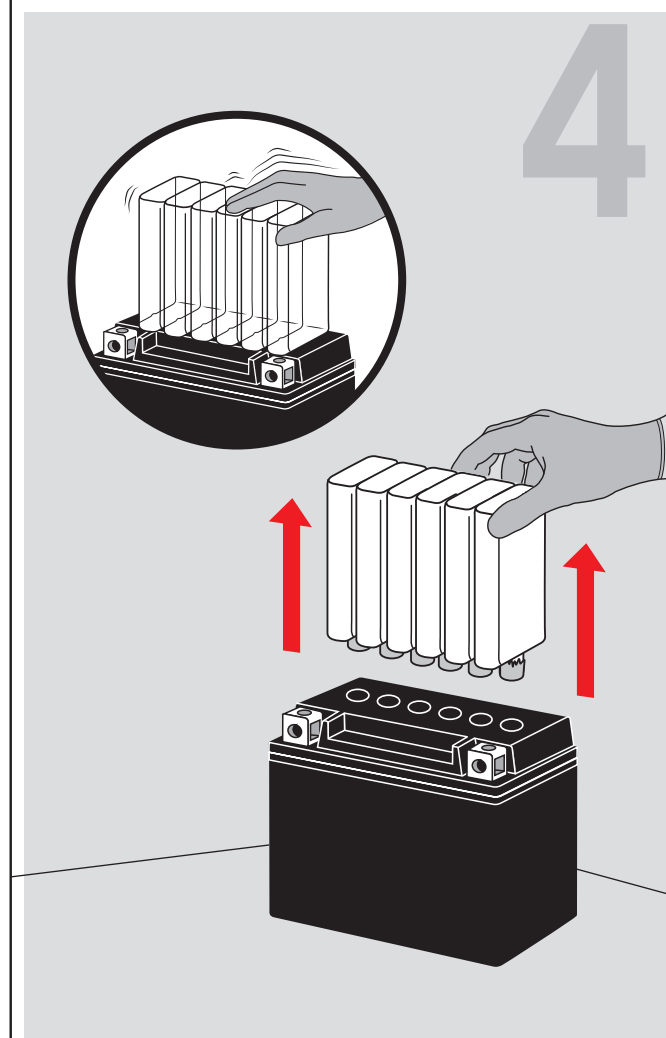
• Air bubbles



3 CHECKING THE ELECTROLYTE FLOW

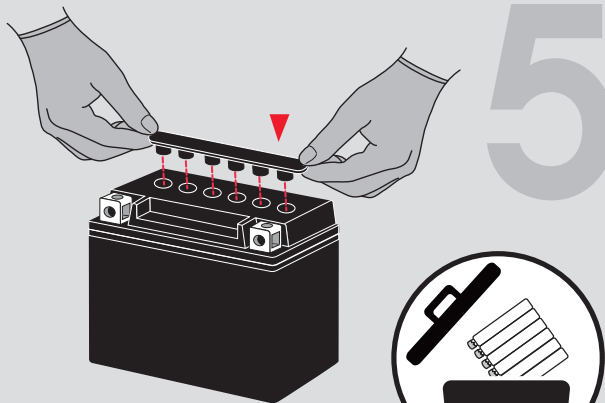
Make sure air bubbles are coming up from all six filler ports. **Leave** the container in this state **for 20 minutes or longer**.

Note If no air bubbles are coming up from a filler port, tap the bottom of the bottle two or three times. Never remove the container from the battery.

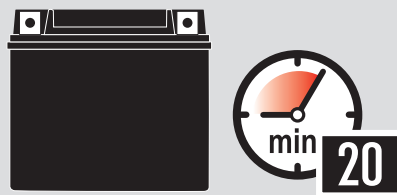


4 PULLING OUT THE CONTAINER

Be certain that all the electrolyte has flowed out. Tap the bottom the same as in step 4 if there is any electrolyte left in the container. Now pull the container gently out of the battery.



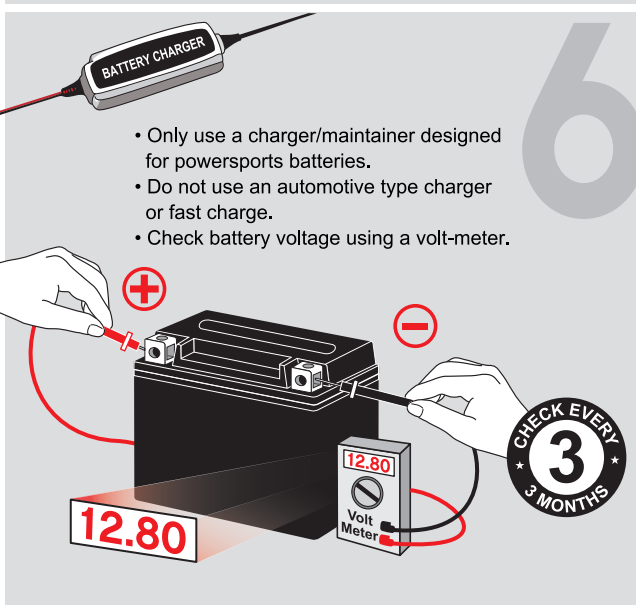
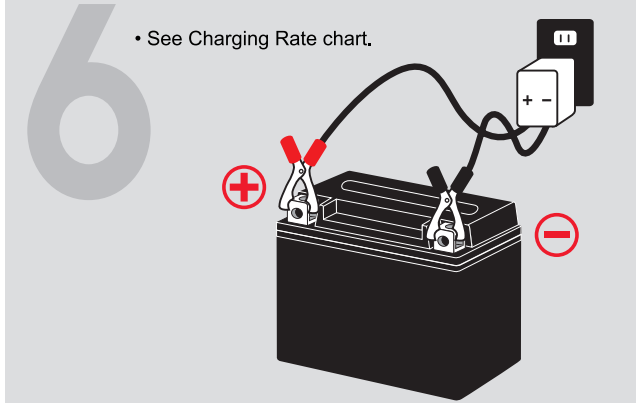
- Strip of caps (battery plugs)
Press down horizontally with both hands.



- Please allow 20 minutes acid absorption time .

5 SEALING THE BATTERY

Fit the strip of caps tightly into the filler ports. Make sure the strip is at the same level as the top of the battery. The fill - up procedure is now complete. Never remove the strip of caps, nor add any water or electrolyte.



- See Charging Rate chart.

- Only use a charger/maintainer designed for powersports batteries.
- Do not use an automotive type charger or fast charge.
- Check battery voltage using a volt-meter.

6 CHARGING INSTRUCTIONS FOR MAINTENANCE-FREE BATTERIES

Note An initial charge is recommended before placing this battery into service.

These batteries are of sealed Maintenance-Free construction which means: 1. Never add water.

2. Use a 12 volt 1 amp motorcycle battery charger.

WARNING!
Do not exceed charging guidelines that are listed on the chart.

BATTERY TYPE NUMBER	VOLTAGE (V)	CAPACITY AH (10HR)	CHARGING TIME IN HOURS	WEIGHT WITHOUT ACID		ACID VOLUME (Liter)
			AT 1 AMP	Kg	Lbs	
CT7B-BS	12	6.5	2-5	1.85	4.07	0.34
CT9B-BS	12	8	4-8	2.43	5.35	0.38
CT12B-BS	12	11	5-10	3.12	6.87	0.51
CTZ12S-BS	12	9	4-8	2.32	5.11	0.42
CTZ12S-BS	12	11	5-10	3.18	7.00	0.53
CTZ14S-BS	12	11.2	5-10	3.18	7.00	0.53
CTR4A-BS	12	2.3	2-3	0.95	2.09	0.14
CT4L-BS	12	3	2-3	1.22	2.69	0.19
CTX4L-BS	12	3	2-3	1.25	2.75	0.19
CT5L-BS	12	4	2-5	1.60	3.52	0.24
CTX5L-BS	12	4	2-5	1.60	3.52	0.24
CTX7L-BS	12	6	3-6	2.00	4.41	0.34
CTX7A-BS	12	6	3-6	2.00	4.41	0.35
CTX9-BS	12	8	4-8	2.30	5.07	0.42
CTX12-BS	12	10	5-10	3.30	7.27	0.60
CTX14-BS	12	12	6-12	3.70	8.15	0.66
CTX14H-BS	12	12	6-12	4.20	9.25	0.66
CTX14L-BS	12	12	6-12	3.70	8.15	0.66
CTX14AH-BS	12	12	6-12	4.04	8.90	0.73
CTX14AHL-BS	12	12	6-12	4.04	8.90	0.73
CTX15L-BS	12	13	7-13	4.20	9.25	0.66
CTH16-12	12	14	7-14	4.22	9.30	0.80
CTX16-BS	12	14	7-14	4.22	9.30	0.80
CTX16-BS-1	12	14	7-14	4.22	9.30	0.80
CTX20CH-BS	12	18	9-18	4.69	10.33	0.80
CTX18-BS	12	21	11-21	5.80	12.78	1.20
CTX18L-BS	12	21	11-21	5.80	12.78	1.20
CTX20-BS	12	18	9-18	4.70	10.35	0.90
CTX20L-BS	12	18	9-18	4.70	10.35	0.90
CTX20H-BS	12	18	9-18	5.10	11.23	0.90
CTX20HL-BS	12	18	9-18	5.10	11.23	0.90
CTX16CL-B-BS	12	19	10-19	5.65	12.44	1.05
CTX19-BS	12	19	10-19	5.65	12.44	1.05
CTX19L-BS	12	19	10-19	5.65	12.44	1.05
CTX24HL-BS	12	21	11-21	6.10	13.44	1.20
CTX30L-BS	12	30	15-30	7.80	17.18	1.47
CTX30CL-B-BS	12	30	15-30	8.20	18.06	1.56

*When using an automatic type powersports battery charger, refer to the charger instructions for use. When using a constant current type charger, refer to the Charging Rate chart.

* These charging rates are recommended for the initial charge.

7 INSTALLATION

1. Position battery in battery tray and fasten firmly to vehicle.
2. Connect terminals properly: A. Pos(+) cable from ignition to Pos terminal; B. Neg (-) cable from engine or chassis to Neg terminal.

MAINTENANCE SERVICE

A battery not in use tends to run down and create sulfate deposits. After your battery has been filled and charged, it is essential that you keep it adequately charged either by running the vehicle, or by using an independent battery charger. If charging is required, use a 1 amp slow charger overnight to return the battery to full charge. It is not recommended to use an automatic shutoff charger / tender for prolonged periods. This will cause premature failure and shorter life.

WINTER STORAGE

Clean battery case and terminals with baking soda and water, and make sure battery is fully charged before storing. Store in a cool, dry location (not next to a furnace or other heat source). Check charge every 45-60 days (see Maintenance, above).