

OWNER'S MANUAL

FILLING AND INSTALLATION INSTRUCTIONS

Anti
Sulfation



DRY CHARGED BATTERY



SULFURIC ACID can cause blindness or severe burns



SHIELD EYES, EXPLOSIVE GASES can cause blindness or injury.
Wear safety gloves



Danger of explosion Ensure proper ventilation.



No sparks, flames, or smoking.



Keep out of the reach of children.



Return old batteries for recycling.
Never dispose of batteries as waste.



Read the instruction manual carefully and follow all instructions
and warnings. Keep the instruction manual for future reference.



Flush eyes immediately with water. Get medical help fast.

PROPOSITION 65 WARNING Battery posts, terminals, and related accessories contain lead and lead compounds, chemicals known to the State of California to cause cancer and reproductive harm. Batteries also contain other chemicals known to the State of California to cause cancer. Wash hands after handling.



BATTERY FLUID, ACID, UN2796

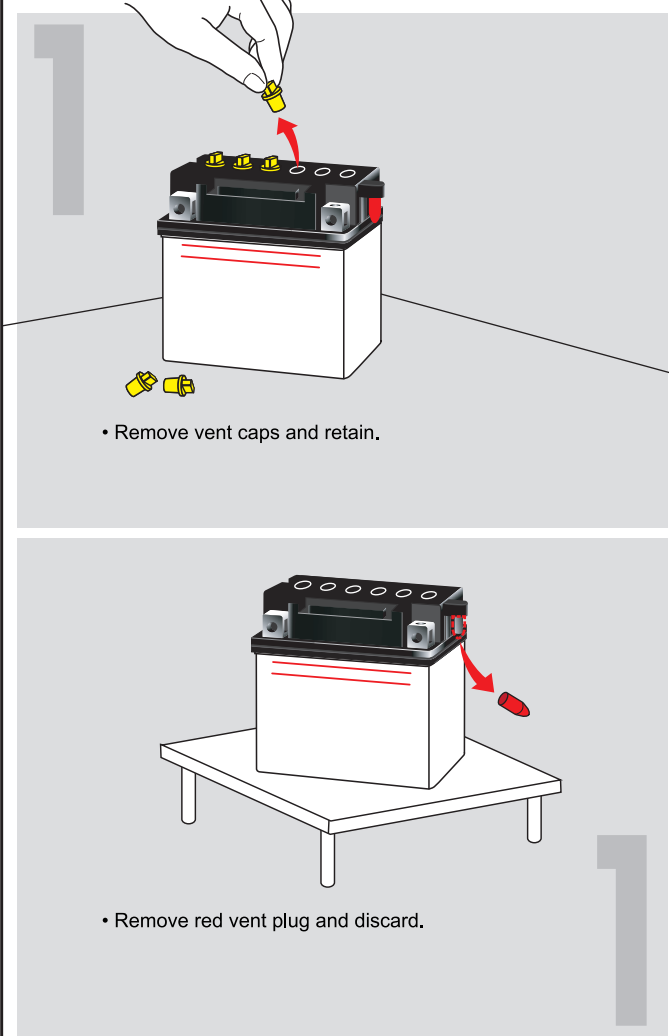


Battery fluid,
sulfuric acid

DANGER

*THIS CONTAINER IS NOT CHILD-RESISTANT ONCE OPENED.
SEE OWNER'S MANUAL FOR PROPER DISPOSAL OF ACID CONTAINER.
UNE FOIS OUVERT, LE CONTENANT N'EST PLUS UN CONTENANT PROTÉGÉ-ENFANTS.
VOIR LE MANUEL D'EMPLOI POUR DISPOSITION APPROPRIÉE DE RÉCIPIENT ACIDE.*

CAUSES BURNS. DANGEROUS FUMES FORM WHEN MIXED WITH OTHER PRODUCTS.
Do not mix with other products that react with the chemical product, such as drain cleaners. Do not swallow. Do not get in eyes. Do not get on skin or clothing. Do not breathe fumes. **Handle with care. Keep out of reach of children.** Wear a mask, rubber gloves and safety glasses. Use only in well ventilated area. **FIRST AID TREATMENT:** Contains Sulfuric acid. If swallowed, call Poison Control Centre or doctor immediately. Do not induce vomiting. **If in eyes, rinse with water for 15 minutes.** If on skin, rinse well with water. If on clothes, remove clothes. If breathed in, move person to fresh air.



1 BATTERY PREPARATION

Place battery on a flat surface in a well-ventilated area.

(a) Remove red vent plug and discard.

WARNING!

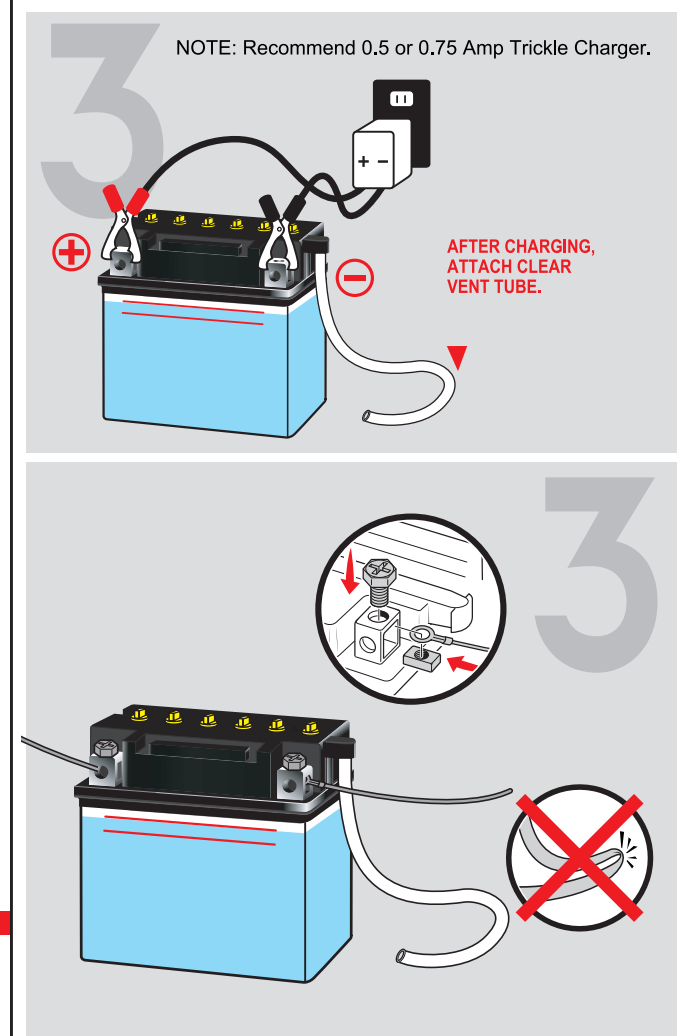
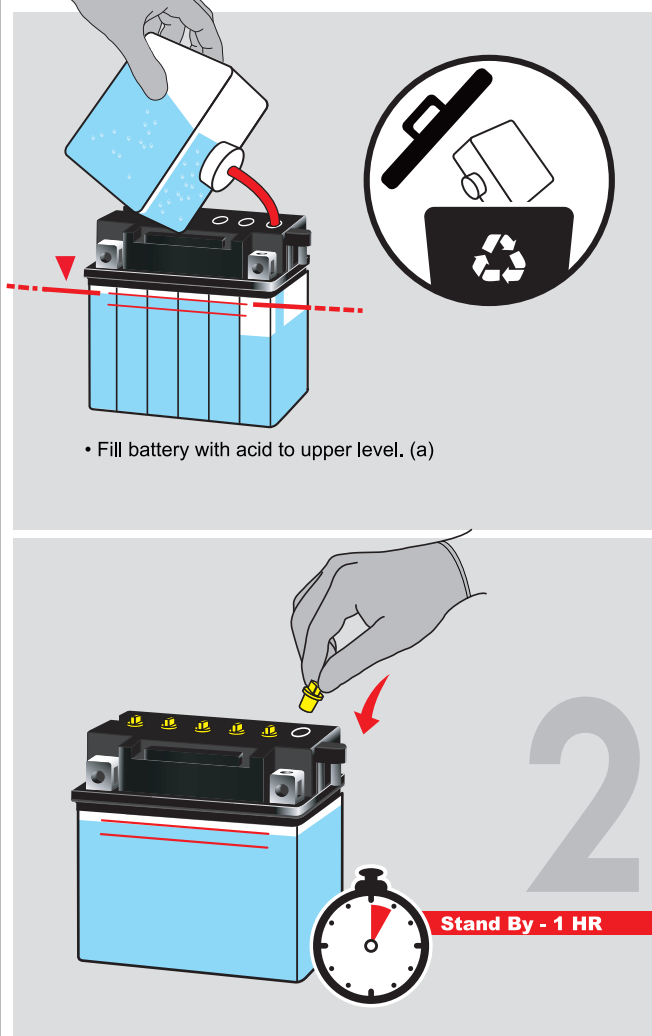
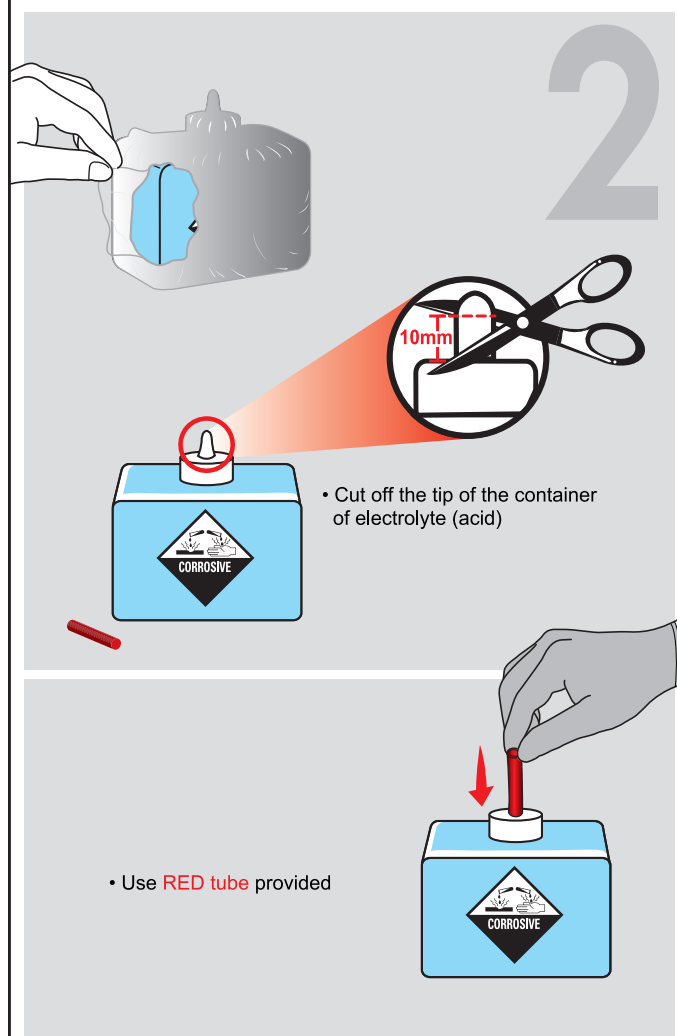
Do not reattach red plug after filling battery with acid!

(b) Remove plastic vent caps and retain.

2 FILLING INSTRUCTIONS

Fill battery with acid to upper level (a). Let battery stand for **60 minutes** before charging. Gently move battery from side-to-side to release any air bubbles between the plates. If acid level has fallen, refill with acid to upper level.

NOTE: This will be the last time electrolyte (acid) should be added. Return unused acid to the place where you purchased the battery or neutralize acid with an equal amount of baking soda.



NOTE: Recommend 0.5 or 0.75 Amp Trickle Charger.

3 CHARGING INSTRUCTIONS

An initial charge is required before placing this battery into service. For best results and maximum life, use a 0.5 or 0.75 Amp Trickle Charger (see chart for the proper charging time for your battery). To prevent accidental release of acid during charging, place caps loosely over access ports. Charge for the period of time indicated in the chart. At the end of the charging time, the battery should gas freely and the specific gravity should read 1.282 for 12-volt or 6-volt batteries. Replace caps firmly, wash off any acid spillage with water and dry battery.

Check the battery voltage after correct charging time and let stand for 1-2 hours. Voltage should read 12.70 on a 12-volt battery or 6.35 on a 6-volt battery. If voltage is below specified voltage, continue charging for an additional 40% of the total charging time (example: 40% of 10 hrs. original charging time = 4 hrs. additional charging time).

NOTE: If you have a 2 Amp or 6 Amp charger, use the Automatic setting and charge until charger indicates complete charge or battery gases freely and the specific gravity reads 1.282 for 12-volt or 6-volt batteries. The voltage should read 12.70 V or 6.35 V. Replace vent caps firmly, wash off any acid spillage with water and dry battery.

After charging, attach clear vent tube. Be sure there are no bends and that tube is free of blockage.



WARNING!
Do not exceed Charging Guidelines that are listed on the chart.

Prolonged charging or use of a constant current charger could shorten battery life.

4 REMOVAL/INSTALLATION

Remove old battery. Mark which cable is connected to the **Positive (+)** and **Negative (-)** posts. Clean cable terminals with wire brush or sandpaper to remove any oxidation. Position new battery on tray, connect clear vent tube to battery, ensuring there are no crimps, folds or blockages. Replace holddown.

Connect terminals:

-  Positive (+) red cable from ignition to Positive Post.
-  Negative (-) black cable from engine or chassis to Negative Post.

MAINTENANCE

Check the electrolyte level once each month. Add only **distilled water** (not acid) and fill to upper level. DO NOT allow electrolyte to fall below lower level. **NOTE:** Charging is recommended anytime water is added to the battery.

**When using an automatic type powersports battery charger, refer to the charger instructions for use. When using a constant current type charger, refer to the Charging Rate chart.*

BATTERY TYPE NUMBER	VOLTAGE (V)	CHARGING TIME IN HOURS	
		At 500mA	At 750mA
6 Volt Battery (MUST use A 6-Volt charger)			
All 6N2...	6	2-4	2-3
All 6N4...	6	4-8	3-6
All 6N5.5...	6	6-11	4-8
All 6N6...	6	6-12	4-8
B39-6	6	7-14	5-10
All 6CB8...	6	8-16	6-11
B49-6	6	10-20	7-14
6CB11-2D	6	11-22	8-15
All 6N11...	6	11-22	8-15
All 6N12...	6	12-24	8-16
All B54...	6	12-24	8-16
B38-6A	6	13-26	9-18
12 Volt Battery (MUST use A 12-Volt charger)			
All 12N5...	12	5-10	4-7
All 12N7...	12	7-14	5-10
All 12N9...	12	9-18	6-12
All 12N10...	12	10-20	7-14
All 12N11...	12	11-22	8-15
All 12N12...	12	12-24	8-16
All 12N14...	12	14-28	10-19

(Continued)

BATTERY TYPE NUMBER	VOLTAGE (V)	CHARGING TIME IN HOURS	
		At 500mA	At 750mA
12 Volt Battery (MUST use A 12-Volt charger)			
All 12N16...	12	16-32	11-22
All 12N18...	12	18-36	12-24
All 12N24...	12	24-48	16-32
All CB2.5L...	12	3-5	2-4
All CB3...	12	4-6	2-4
All CB4...	12	4-8	3-6
All CB5...	12	5-10	4-7
All CB7...	12	8-16	6-11
All CB9...	12	9-18	6-12
All CB10...	12	11-22	8-15
All CB12...	12	12-24	8-16
All CB14...	12	14-28	10-19
All SCB14...	12	14-28	10-19
All HCB16A-A...	12	16-32	11-22
All CB16...	12	20-38	13-26
All CB18...	12	18-36	12-24
All C50-N18...	12	20-40	14-27
All SC50-N18...	12	20-40	14-27
All C60-N24...	12	28-56	19-38
All C60-N28...	12	28-56	19-38
All CB68-12	12	28-56	19-38
All CHD4-12	12	28-56	19-38
All C60-N30...	12	30-60	20-40
All CB30...	12	30-60	20-40
All U1(R)7...	12	18-36	12-24
All U1(R)9...	12	24-48	16-32
All U1(R)11...	12	30-60	20-40

*These charging rates are recommended for the initial charge.

Rely on premium powersports batteries by Fire Power if you're looking for quality and efficiency.