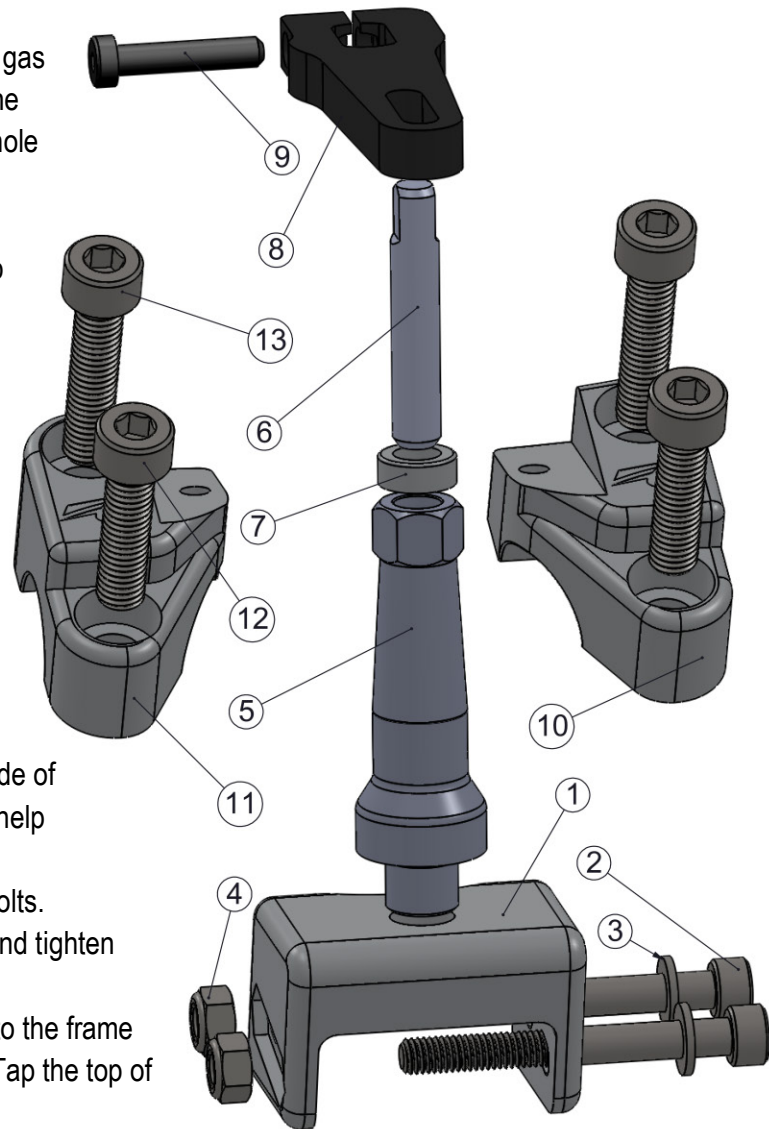


Overbar Mount Instructions

ITEM NO.	PART NUMBER	DESCRIPTION	QTY.
1	LK-CL205_revA	Frame Mount	1
2	70-2655	M6 x 55mm Bolt	2
3	70-6006	M6 Washer	2
4	70-5006	M6 Lock Nut	2
5	LK-MS049_revA	Frame Mount Tower	1
6	LK-PN011_revC	Tower Pin	1
7	LK-SP090_revA	Aluminum Pin Spacer	1
8	LK-PL005_revA	Transfer Arm	1
9	VC1-10,9-M5-0,8-25-BLZ	M5 x 25mm Bolt	1
10	LK-CL239R_revC	Overbar Stabilizer Mount	1
11	LK-CL239L_revC	Overbar Stabilizer Mount	1
12	70-2830	M8 x 30mm Bolt	2
13	70-2835	M8 x 35mm Bolt	2

1. Installation requires drilling holes in your frame. If you do not have the required tools, have your dealer install the stabilizer.
2. A small amount of semi-permanent thread locking fluid (Blue Loctite #243 or equivalent) should be applied to all fasteners.
3. Using a 12mm wrench remove the two bolts attaching the front fairing to the frame. Slide the fairing forward out of the way, completely removing the fairing is not necessary. (Figure 1)
4. The body panels attached to the fuel tank will need to be removed on the E models. (Figure 2)
5. Place the frame mount (Item 1) on the frame just in front of the gas tank. One existing hole on the right side of the frame should line up with one of the holes in the frame mount. Drill the existing hole out with a 15/64" drill bit. (Figure 3) DO NOT drill all the way through both sides of the frame.
6. Re-install the frame mount and insert one of the 6mm bolts into the hole in the frame. Use a punch or center drill to mark the other side of the frame using the frame mount as a guide. (Figures 4 & 5)
7. Remove the frame mount and drill a hole at the marked location with a 15/64" drill bit.
8. Install the frame mount with one M6 bolt (Item 2), washer (Item 3) and nut (Item 4). Ensure frame mount is sitting flush on the frame and tighten the M6 bolt. Double check that frame mount is completely seated on frame. (Figure 6)
9. Mark and drill the remaining two holes with the frame mount installed on the bike. Like before, drill each hole from the outside of the frame using a 15/64" drill bit. Use a punch or center drill to help position the drill bit. (Figures 7 & 8)
10. Install the second M6 bolt, washer, and nut. Tighten both M6 bolts.
11. Thread the frame mount tower (Item 5) into the frame mount and tighten with a 13mm wrench.
12. Apply a light coat of grease and insert the tower pin (Item 6) into the frame mount tower. The aluminum pin spacer (Item 7) is adjustable! Tap the top of the pin with a hammer or mallet to adjust height.
13. Re-install fairing bolts.
14. Install the transfer arm (Item 8) onto the stabilizer so that the slot is positioned under the stabilizer. Apply some semi-permanent thread locking fluid (Blue Loctite #243) to the M5 bolt (Item 9) and tighten. (Figure 9)
15. Remove the stock handlebar mounts.



16. Using the M6 bolts packaged with the stabilizer, attach the stabilizer to the overbar stabilizer mounts (Items 10&11). Do not tighten bolts yet. (Figure 10)
17. Insert the tower pin into the slot on the transfer arm. Set the stabilizer overbar mounts on the handlebars. (Figure 11)
18. Adjust the height of the tower pin so that the top is flush with the top of the transfer arm. (Figure 5)
19. After the frame mount pin has been adjusted to the correct height, tighten the handlebar mounts with the M8 bolts (Items 12&13). The longer bolts should be used in the forward set of holes. Make sure to maintain an even gap between the handlebar mounts and the stock triple clamp when tightening bolts. (Figure 13)
20. Tighten the M6 stabilizer bolts.



Figure 1



Figure 2



Figure 3



Figure 4



Figure 5



Figure 6



Figure 7



Figure 8



Figure 9



Figure 10



Figure 11



Figure 12

Instructions: Over Bar Stabilizer Mount

Thank you for purchasing the Fastway Over Bar Stabilizer Mount. We have designed this system to be as easy to install as possible and accommodate a large range of applications.

1. Mount Top Bar Clamp



- a. Remove the 4 bolts that hold the top bar clamps in place and remove the clamps.

Note: There is no need to remove the handle bars.

- b. Install two flat head bolts in the stabilizer mounting plate to the Fastway top clamp. A tight fit is normal.
- c. Install the Fastway top bar clamp using the four M8 bolts supplied. It is critical to use the supplied bolts to ensure proper fit and clearance. Evenly tighten the bolts to ensure that the top clamp is an even and parallel distance from the bottom handlebar risers.

2. Stabilizer Mount Plate



- a. Install the stabilizer mount plate on the top clamp tight enough so it will stay in place but loose enough so it can be moved.
- b. Mount the Fastway Steering Stabilizer to the stabilizer plate and center the adjustment knobs over the steering axis. It may be necessary to adjust the height of the tower pin, see frame clamp instructions.
- c. Turn the handle bar in both directions and verify that the bar turns to the steering stops, if not move the stabilizer plate forward about 1/8" and re-check the steering movement. Make sure there is no interference with any portion of the stabilizer system.
- d. Remove the stabilizer and tighten the stabilizer plate mounting bolts.
- e. Once the stabilizer plate has been properly tightened, reinstall the steering stabilizer.