

## Instructions: ASS-FC-0406

1. Place the bike on a stand and secure it to prevent it from falling over during the installation procedure.
2. **A small amount of semi-permanent thread locking fluid (Blue Loctite #243 or equivalent) should be applied to all fasteners included with stabilizer kit. After a short first ride, check that all bolts are still tight.**
3. Slide the transfer arm (Item 1) onto the stabilizer. The arm should fit snugly onto the stabilizer. DO NOT hammer the arm onto the stabilizer. If necessary, rock the arm back and forth into place. Secure the transfer arm to the stabilizer with the M5 bolt (Item 7).
4. Remove the number plate and set it aside.
5. Loosen the 2 nuts under the triple-clamp that hold the handlebar clamps. (Figure 1)
6. Remove the handlebar top clamps and lay the handlebars on the front fender. (Figure 2)
7. Remove triple-clamp by loosening the two pinch bolts on each side and removing the center nut.
8. Gently spread the frame clamp (Item 2) by sliding a flat screwdriver into the slot at the front of the clamp. With the clamp spread apart, slide it down onto the frame. Ensure that the frame clamp is fully seated on the frame. (Figure 3)
9. Slide the triple clamp spacer (Item 6) over the steering stem. (Figure 4)
10. Thread the frame clamp tower (Item 10) into the frame clamp and tighten.
11. Apply a light coat of grease to the tower pin (Item 9) and slide it into the frame clamp tower. Grease should also be applied to top of tower pin where it inserts into the transfer arm.

Item No.	Part Number	Description	QTY.
1	LK-PL005	Control Arm 71mm	1
2	LK-CL221	Frame Clamp	1
3	70-2625	M6 Bolt, 25mm long	1
4	LK-MS038	Rubber Cone	2
5	LK-MS039	Rubber Cone Washer	2
6	LK-SP124	Triple Clamp Spacer	1
7	VC1-10.9-M5-0.8-25-BLZ	M5 Bolt, 25mm long	1
8	LK-SP090	Aluminum Pin Spacer	1
9	LK-PN011	Tower Pin	1
10a	LK-MS030	Frame Clamp Tower (Underbar)	1
10b	LK-MS049	Frame Clamp Tower (Overbar)	1

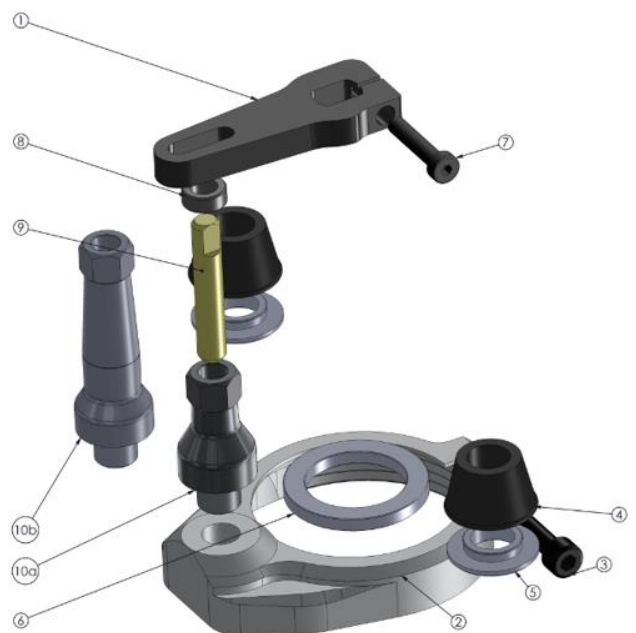


Figure 1

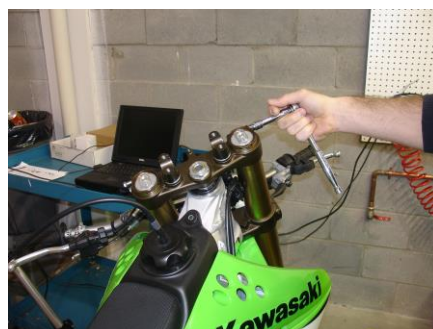


Figure 2



Figure 3

12. **The aluminum spacer (Item 8) on the tower pin is adjustable!** Gently tap on the top of the pin with a hammer to adjust height. The top of the tower pin should be flush with the top of the transfer arm. (Figures 5&6)
13. Replace the rubber cones on the underside of the triple-clamp with the included rubber cones (Items 4&5). **Do not install the included rubber cones on triple clamps with two mount locations. The included cones will not fit properly in the "D" shaped holes.**

**Underbar Stabilizer Installation:**

Stop here and refer to instructions included with underbar mount for reassembly.

**Overbar Stabilizer Installation:**

Follow remaining steps.

14. Re-install the stock handlebar risers, do not tighten nuts yet.
15. Reinstall triple-clamp; torque the center nut to factory specifications and then torque pinch bolts to factory specifications.
16. Install handlebars and overbar mount. Make sure to maintain an even gap between the overbar mount and the handlebar risers when tightening bolts.
17. **Tighten the handlebar riser nuts on the underside of the triple-clamp.**
18. The crossbar on the stock handlebars will need to be bent to provide clearance for the stabilizer. **DO NOT RIDE THE BIKE WITH THE CROSSBAR REMOVED.** Remove crossbar from handlebars and place in a vise. Slide a bar or wrench over the end of the crossbar and bend each side just enough to allow clearance for stabilizer. (Figures 7-9)
19. The overbar mount includes a sliding plate. Adjust the sliding plate so that the stabilizer knobs are centered over the center nut on the triple clamp. Set the stabilizer onto the mount with the tower pin in the slot on the transfer arm and secure the stabilizer to the mount with the 2 M6 bolts included with the stabilizer.
20. **Turn the handlebars both directions and verify that the bars turn to the steering stops. If not, remove the stabilizer from the overbar mount and move the sliding plate forward about 1/8". Reinstall the stabilizer and re-check the steering movement. Repeat if necessary until the handlebars turn to the steering stops in both directions.**



Figure 4



Figure 5



Figure 6



Figure 6



Figure 7



Figure 8