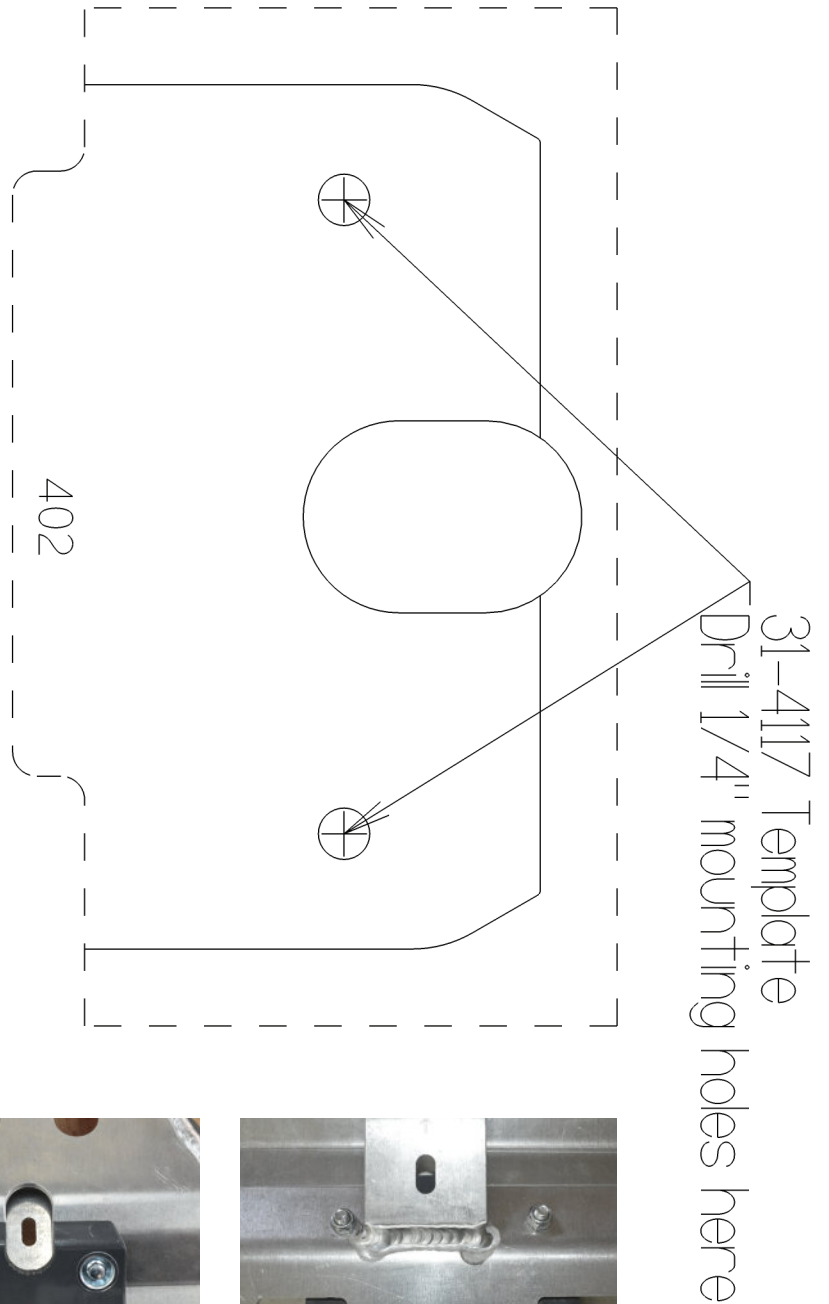
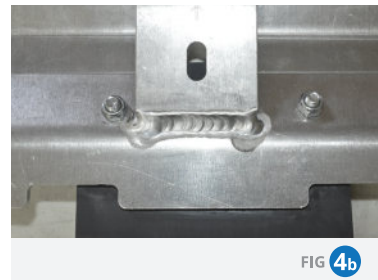
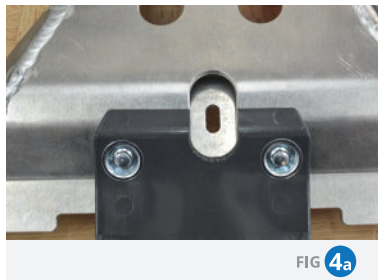




EE SHOCK LINKAGE INSTALLATION INSTRUCTIONS

- 1** If the linkage guard is to be installed on a skid plate that is already installed on a bike, remove the skid plate from the bike.
- 2** If your skid plate doesn't already have the Linkage Guard holes, cut out the supplied template, align the template with the back edge of the skid plate. [Fig. 1]
- 3** Now mark the two holes that need to be drilled in the skid plate. [Fig. 2]
- 4** Using the supplied 1/4" drill, drill the two marked holes. [Fig. 3]
- 5** Mount the linkage guard using the supplied M6x12 hex head bolts, dished washers and the M6 Nylock nut as shown in [Fig.4a & b]



Part # **31-4117**

Shock Linkage Installation

Quality Off-Road Motorcycle Products



Learn more about motorcycle guards and protection we have.