



Chains of the Future



CONCEPT

**PREMIUM
MOTORCYCLE CHAIN**

ELEGANT, STRONG, DETAILED AND MAGNIFICENT,
ULTIMATE SHAPE WITH FLEXIBILITY AND STRENGTH

FIVE CONCEPTS TO MAKE OUR IDEAL THREED CHAIN A REALITY

Impressive

- Ultimate Plate Shape
- 3D-designed beautiful curved form is an evolutionary shape with various functions in the next generation

Dynamic

- Astonishing Transmission Efficiency
- Smooth and powerful acceleration by excellent transmission performance

Elegant

- Bright Premium Chain
- Nothing but our 3D design makes it possible to have an elegant form and everlasting beautiful light reflection

Advanced

- Applying Brand-new Revolutionary Process of Manufacturing
- Far better than standard chains in every aspect such as fatigue strength, product quality and so on
- Aiming for no Initial elongation

Light

- Slim Design with the Minimum Weight
- Produced by our exclusive technology to strengthen a chain without making it heavy

LINEUP

OUR BRAND-NEW STRONGEST SIX ITEMS

ROAD RACE.....	ThreeD 520GP
MOTOCROSS	ThreeD 520MXR
ENDURO·SUPERMOTO	ThreeD 520SM
SUPER SPORTS (250cc-1,000cc)	ThreeD 520Z
SUPER SPORTS (250cc-1,200cc)	ThreeD 525Z
SUPER SPORTS (250cc-1,400cc).....	ThreeD 530Z

COMMON ADVANTAGES OF EACH ITEM

Precise Forging Process

We make our ThreeD chains highly Stiff, leading to better acceleration and efficient engine work.

Original Special Plate with Lightening Hole

We create a lightening hole in each inner plate without weakening the plate according to the computer analysis.

This plate enables the chain to be light, remove mud from the hole, and dissipate heat effectively.

Improvement of Transmission Efficiency

Our ThreeD parts are precisely manufactured, leading to a great improvement of transmission efficiency.

Adoption of Special Pin

We create a hole on both end of a pin to make the chain lightened.

Edge-Cut Inner Plate

Reduces friction and realizes smooth engagement with sprocket.



ROAD RACE

IDEAL STYLE FOR VICTORY

Advantages of ThreeD 520GP

- Plating
- Inner Plate with Lightening Hole
- Reduced Friction
- Chromium Carbide Pin
- QX2 Ring
- SX2 Ring
- Lightweight
- Transmission Efficiency
- Precise Forging Process
- End Facing Plate
- Dimpled Outer Plate
- Edge-Cut Inner Plate

Suggested Applications: 250cc-1,000cc

Category	Product#	Seal Type	Conn. Link	Applications
Road Race	520GP	SX2 Ring	MLJ	250cc-1,000cc

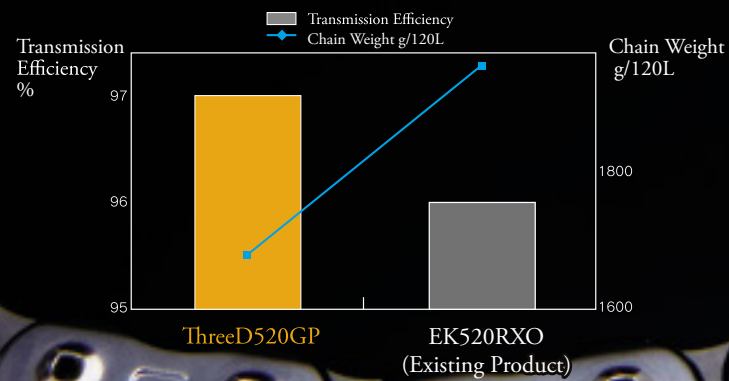
REDUCED FRICTION
Our Exclusive SX2 Ring leads to reduction of friction (compared with our existing products).

CHROMIUM CARBIDE PIN
Chromium Carbide pin surface coating increases hardness and reduces chain wear.

LIGHTWEIGHT
Plate: Special three-dimensional plate shape strengthens a chain without making it heavy
Pin: Both end of a pin has a lightening hole.

IMPROVEMENT OF TRANSMISSION EFFICIENCY
Our ThreeD parts are precisely manufactured, leading to a great improvement of transmission efficiency.

RELATION BETWEEN TRANSMISSION EFFICIENCY AND CHAIN WEIGHT



ThreeD 520GP

MOTOCROSS

Advantages of ThreeD 520MXR

- Plating
- Inner Plate with Lightening Hole
- Reduced Friction
- Chromium Carbide Pin
- QX2 Ring
- SX2 Ring
- Lightweight
- Transmission Efficiency
- Precise Forging Process
- End Facing Plate
- Dimpled Outer Plate
- Edge-Cut Inner Plate

Suggested Applications: 125cc-500cc

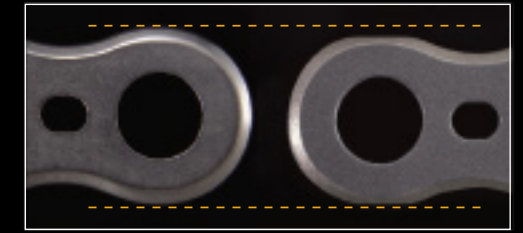
Category	Product#	Seal Type	Conn. Link	Applications
Motocross	520MXR	Non-sealed	SPJ	125cc-500cc

REDUCED FRICTION
Non-sealed chain to reduce as much friction as possible.

CHROMIUM CARBIDE PIN
Chromium Carbide pin surface coating increases hardness and reduces chain wear.

END FACING PLATE
* Realizes wear-resistant performance against mud without reducing strength.

End Facing / Exclusive for 520MXR, Reduced friction against chain guide, also makes the chain lightweight



without End Facing with End Facing

The end of plate, (which engages with chain guide), is cut off so that the plate can engage smoothly without unnecessary friction against chain guide.

ENDURO • SUPERMOTO

Advantages of ThreeD 520SM

- Plating
- Inner Plate with Lightening Hole
- Reduced Friction
- Chromium Carbide Pin
- QX2 Ring
- SX2 Ring
- Lightweight
- Transmission Efficiency
- Precise Forging Process
- End Facing Plate
- Dimpled Outer Plate
- Edge-Cut Inner Plate

Suggested Applications: 250cc-650cc

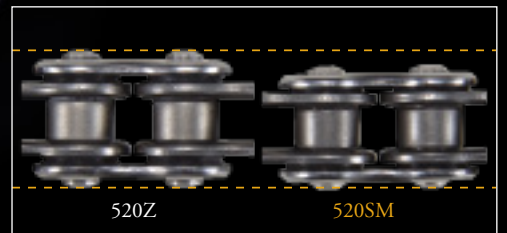
Category	Product#	Seal Type	Conn. Link	Applications
Enduro/Supermoto	520SM	SX2 Ring	MLJ	250cc-650cc

SX2 RING
Slim sized SX2 ring strengthens the stiffness by reducing clearance between plates / SX2 ring has better wear-resistant performance than SX ring by 30%.

LIGHTWEIGHT
Plate: Special three-dimensional plate shape strengthens a chain without making it too heavy.
Pin: Both ends of the pins have lightening holes.

IMPROVEMENT OF TRANSMISSION EFFICIENCY
Our ThreeD parts are precisely manufactured, leading to a great improvement of transmission efficiency.

ThreeD 520SM



Comparison of Width between and 520SM

SUPER SPORTS

MASTERPIECE TO BE NO.1



Advantages of ThreeD 520Z, 525Z, and 530Z

Plating	Inner Plate with Lightening Hole	Reduced Friction	Chromium Carbide Pin	QX2 Ring	SX2 Ring
Lightweight	Transmission Efficiency	Precise Forging Process	End Facing Plate	Dimpled Outer Plate	Edge-Cut Inner Plate

- 520Z Suggested Applications: 250cc-1,000cc
- 525Z Suggested Applications: 250cc-1,200cc
- 530Z Suggested Applications: 250cc-1,400cc

ThreeD 530Z • 525Z • 520Z

REDUCED FRICTION

Exclusive QX2 Ring leads to reduction of friction (compared with our existing products).

QX2 RING

QX2 ring has better wear-resistant performance than QX ring by 30%.

LIGHTWEIGHT

Plate: Special three-dimensional plate shape strengthens a chain without making it heavy.
Pin: Both ends of the pins have lightening holes.

IMPROVEMENT OF TRANSMISSION EFFICIENCY

Our ThreeD parts are precisely manufactured, leading to a great improvement of transmission efficiency.

Category	Product#	Seal Type	Conn. Link	Applications
Super Sports	520Z	QX2 Ring	MLJ	250cc-1,000cc
	525Z	QX2 Ring	MLJ	250cc-1,200cc
	530Z	QX2 Ring	MLJ	250cc-1,400cc

ThreeD New Performance

Plating	ThreeD chain is impressively and elegantly shining, appealing as premium chain that cannot be ignored	Lightweight	Plate: Special three-dimensional plate shape strengthens a chain without making it heavy Pin: Both end of a pin has a lightening hole
Inner Plate with Lightening Hole	We create a lightening hole in each inner plate without weakening the plate according to the computer analysis / This plate enables the chain to be light, remove mud from the hole, and dissipate heat effectively	Transmission Efficiency	Our ThreeD parts are precisely manufactured, leading to a great improvement of transmission efficiency
Reduced Friction	Our exclusive QX2 and SX2 ring contributes to reduction of friction (compared with our existing products)	Precise Forging Process	We make our ThreeD chains highly Stiff, leading to better acceleration and efficient engine work
Chromium Carbide Pin	Chromium Carbide pin surface coating increases hardness and reduces chain wear	End Facing Plate	Our original End Facing Plate realizes wear-resistant performance against mud without reducing strength
QX2 Ring	QX2 ring has better wear-resistant performance than QX ring by 30%	Dimpled Outer Plate	Dimpled outer plate shows strong, elegant, and advanced 3D design
SX2 Ring	Slim sized SX2 ring strengthen the stiffness by reducing clearance between plates / SX2 ring has better wear-resistant performance than SX ring by 30%	Edge-Cut Inner Plate	Reduces friction and realizes smooth engagement with sprocket

ThreeD Connecting Links

SPJ (Clip-type)	Comes standard with ThreeD 520MXR, Slip Fit
MLJ (Rivet-type)	Comes standard with ThreeD 520GP, 520Z, 525Z, 530Z (can be used for ThreeD 520SM as optional link) As good as chain in terms of fatigue strength, Requires special riveting tool to install
SKJ (Clip-type)	Comes standard with ThreeD 520SM, Semi-Press Fit

ThreeD Color Availability

Category	Product #	Color
Road Race	520GP	Black / Gold, Chrome, Gold
Motocross	520MXR	Black / Gold, Chrome, Gold
Enduro/Supermoto	520SM	Black / Gold, Chrome, Gold
Super Sports	520Z	Black / Gold, Chrome, Gold
	520Z	
	520Z	

Looking for dependable motorcycle drivetrain and transmission parts? Rely on EK Chain for quality and long-lasting products.