



**Q625.001**  
**2003-2009 Arctic Cat**  
**500I Standard 4X4**  
**Stage 1**

For mildly tuned machines using the stock airbox with stock or aftermarket filter. May also be used with a good aftermarket exhaust system.

K&N Filter # N/A

<b>Parts List</b>		
1	Main Jet	DJ126
1	Main Jet	DJ128
1	Main Jet	DJ130
1	Main Jet	DJ132
1	Main Jet	DJ134
1	Main Jet	DJ136
1	Main Jet	DJ138
1	Main Jet	DJ140
1	Main Jet	DJ142
1	Fuel Needles	DNO170
2	Adjusting Washers	DW0001
1	E-Clip	DE0001

## STAGE ONE INSTRUCTIONS

1. Remove vacuum slide from carb. Remove stock needle & spacers, noting order of assembly (Fig.A).
2. Install Dynojet needle on groove #3 for applications below 5000 feet, groove #2 for above 5000 feet, using all stock spacers. Install the Dynojet washers above the E-clip (Fig.A).
3. Remove stock main jet and replace with Dynojet main jet provided. Use the DJ136 below 3000 feet, DJ132 from 3000 to 6000 feet and DJ128 above 6000 feet. When using an aftermarket exhaust with a high flow baffle, use the DJ140 below 3000 feet, DJ136 from 3000 to 6000 feet and the DJ132 above 6000 feet. When using an aftermarket exhaust with a quiet baffle, use the DJ138 below 3000 feet, DJ134 from 3000 to 6000 feet and the DJ130 above 6000 feet.
4. Locate the Fuel Mixture Screw (Fig.B). Using a flat blade screwdriver, turn the mixture screw clockwise until it seats, then turn out 1.5 turns, 1 turns above 5000 feet.

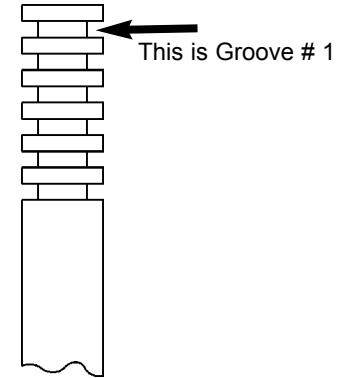


Fig.A

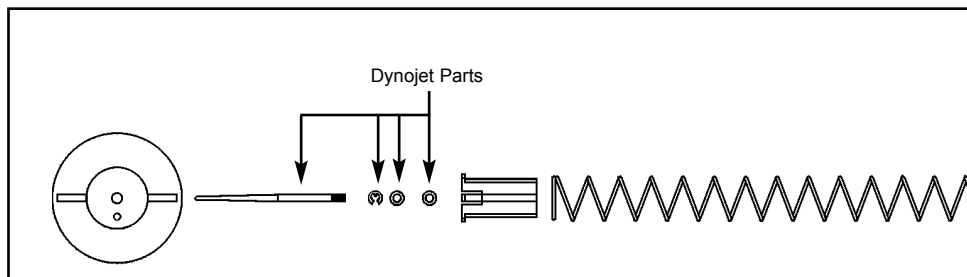


Fig.B

