

**Q519.001**  
**2003~2006 Polaris**  
**Sportsman 600 Twin**  
**Stage 1**

For mildly tuned machines using the stock airbox with stock or aftermarket filter. May also be used with a good aftermarket exhaust system.



<b><i>Parts List</i></b>		
1	Main Jet	DJ132
1	Main Jet	DJ134
1	Main Jet	DJ136
1	Main Jet	DJ138
1	Main Jet	DJ140
1	Main Jet	DJ142
1	Main Jet	DJ144
1	Main Jet	DJ146
1	Main Jet	DJ148
1	Fuel Needle	DNO201
1	Adjusting Washer	DW0001
1	E-Clip	DE0001
1	Plug Drill	DD 5/32
1	Screw	DS0001

## STAGE ONE INSTRUCTIONS

Q519.001

1. Remove vacuum slide from the carb. Remove stock needle & spacers, noting order of assembly (Fig. A).
2. Install Dynojet needle on groove #2 for applications below 3000 feet, groove #1 for above 3000 feet, using all stock spacers. Install the Dynojet washer above the E-clip.
3. Remove stock main jet and replace with Dynojet main jet provided. If you are running the stock exhaust use the DJ140 below 3000 feet, DJ136 from 3000 to 6000 feet and DJ132 above 6000 feet. If you are running an aftermarket exhaust with a Quiet baffle, use the DJ142 below 3000 feet, DJ138 from 3000 to 6000 feet and DJ134 above 6000 feet. If you are running an aftermarket exhaust with a High flow baffle, use the DJ144 below 3000 feet, DJ140 from 3000 to 6000 feet and DJ136 above 6000 feet. Be sure that the jet you are changing is the main jet.
4. Locate the Fuel Mixture Screw (Fig.B). If you see a screw head at Fig. B then proceed to the adjusting procedure. With the 5/32 drill bit provided carefully drill through the plug. **NOTE:** The mixture screw is directly underneath this plug, be ready to pull back on the drill the instant you break through. Use screw provided to secure and remove this plug. Using a flat blade screwdriver, turn the mixture screw clockwise until it seats, then turn out 3 turns below 3000 feet or 2.5 turn above 3000 feet.

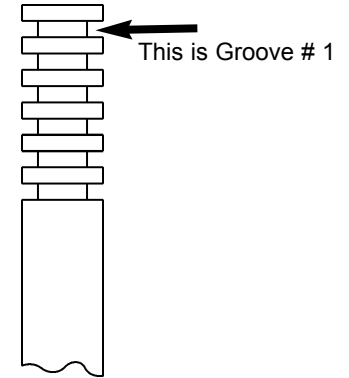


Fig.A

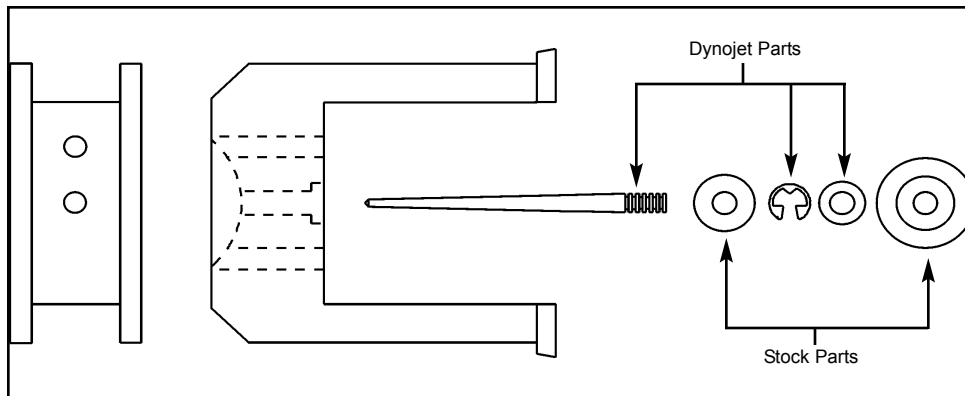


Fig.B

