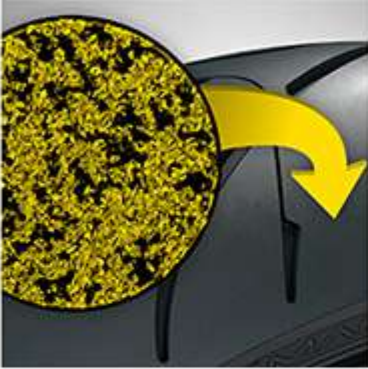


WHAT THIS TYRE GIVES YOU.

KEY BENEFITS

TECHNOLOGIES



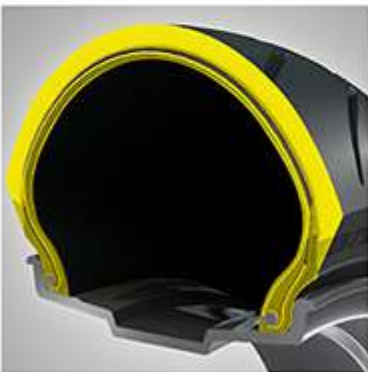
NEXT GENERATION WEAR-RESISTANT NANO TECHNOLOGY COMPOUNDS.

RoadSmart III's new MultiTread compound with optimised tri-polymer blend and high dispersion silica mix, offers significantly increased mileage and wet grip. Internal tests show that mileage has been improved by +10%.** **Versus predecessor rear tyre, RoadSmart II



UNIQUE INTERCONNECTING GROOVE TREAD (IGT) DELIVERS HIGH WATER DISPERSION RATES.

Innovative interconnecting groove design (iGT) ensures fast and efficient evacuation of water to maintain class-leading grip and handling for longer.



NEWLY DEVELOPED RAYON PLY CARCASS AND FRONT PROFILE.

Dunlop's RoadSmart III has an entirely revised rayon ply carcass, requiring significantly less steering input and offering more precise handling, whilst maintaining trademark confidence and reliable feedback.



LOOKS DIFFERENT, IS DIFFERENT. INNOVATIVE TREAD DESIGN WITH ENHANCED GROOVE ANGLES ON FRONT AND REAR.

The ground-breaking tread pattern of RoadSmart III has been especially developed to ensure even wear, designed for long lasting performance.

DUNLOP TYRE TECHNOLOGIES

We were the first to apply race tyre performance standards to street tyres. With engineers and designers across Europe, Japan and North America.



JOINTLESS BELT (JLB) CONSTRUCTION

All our radial street tyres are designed using a combination of Computer Aided Design (CAD) technology and Finite Element Analysis (FEA) as well as JointLess Belt (JLB) construction (either front or rear). JLB construction eliminates the belt overlaps resulting in smoother handling and a more stable contact patch with the road.



MULTI-TREAD (MT) TECHNOLOGY

Years of success in global Superbike, Endurance and GP championships have resulted in the development of a pioneering multi-compound, which is transferred to many of our current Sportmax track and road products. By mixing compounds, the same tyre can display different performance properties at maximum leaning angles than when upright during straight line speed.



CTCS

Carcass Tension Control System (CTCS) controls casing stress distribution, optimising the tension in different areas, resulting in more consistent and controlled line holding, straight-line traction and better feedback.

TIRE HIGHLIGHTS 1/3:

LONGEVITY AND QUALITY

Dunlop's Performance Touring Roadsmart III offers riders an option they've never had before: A high-mileage tire that stays closer to peak performance over its lifespan than any other tire on the market. Greater performance over more miles, and greater mileage than any of the competition:

The Roadsmart III just opened the door for serious riders to go farther than ever before without compromising performance.



02

TIRE HIGHLIGHTS 2/3:

VARIETY OF SIZES

Designed to work on everything from middle-weight sport bikes for riders looking for more mileage, to big, powerful performance-touring machines.



03

TIRE HIGHLIGHTS 3/3:

ULTIMATE PERFORMANCE

Utilizing new ideas and proven concepts, Dunlop's Sportmax® Roadsmart III redefines the Sport Touring tire category by reinventing long-haul tire performance. Call it Performance Touring, the ability for a tire to not only last longer, but to perform at a higher level throughout its lifetime.



Feel the difference with Dunlop.

Find out more about wheels & tires we have.