

2017 DUNLOP® TIRE LINES



THE ADVANTAGES OF DUNLOP®



PERFORMANCE FOR THE JOURNEY, STYLE FOR THE ARRIVAL

Dunlop understands there are some drivers who value the arrival as much as the journey. That's why we make tires that deliver style with performance to match.

WHAT DUNLOP MEANS TO YOU

Dunlop gives you an edge that can add up to more sales opportunities.

A HERITAGE OF SUCCESS

Dunlop is an established brand that has been thriving for more than 120 years. Thanks to greater brand acceptance, consumers are more likely to consider purchasing Dunlop tires than several other brands, which helps you close the sale.

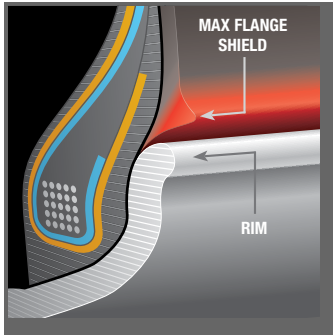
GENERATES SHOPPER TRAFFIC

Dunlop tires have been chosen as Original Equipment on many popular vehicles including Honda, Mazda and Toyota, along with premium brands like Lexus and Porsche. That means more consumers are likely to consider shopping at retailers that sell Dunlop tires, which means more traffic in your outlets.

SIMPLIFIES YOUR BUSINESS

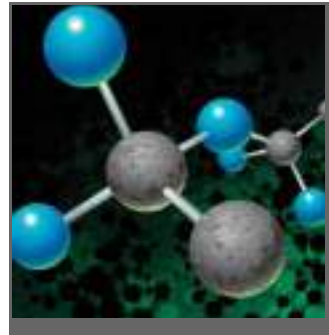
Dunlop offers you a simplified product screen with something for every driver. The Dunlop Signature Power Line offers more than 50 SKUs covering a significant portion of the mid-tier segment. Plus, Dunlop winter products offer selections for cold weather climates. A product selection that covers a broad range of drivers makes it easier for you to match tire to consumer.

MAX FLANGE SHIELD®



The Max Flange Shield is a firm rubber guard that extends beyond the rim and wraps around the lower sidewall of the tire to help protect rims from accidental curb damage.

SILICARBON MATRIX™



Made of silica and carbon black, the Silicarbon Matrix tread aids grip in both rain and dry weather.

DIMENSIONALLY STABLE POLYESTER™



To help maintain uniformity, toughness and a smooth, comfortable ride, Dimensionally Stable Polyester ply material goes through a special manufacturing process to pre-cure and pre-stretch the ply cords.

JOINTLESS BAND TECHNOLOGY™



Jointless Band Technology helps maintain the tire's shape at highway speeds. With fabric positioned in all the right places to enhance handling and treadwear, this continuous spiral ply serves to help reduce vibration.

MULTI-RADIUS TREAD TECHNOLOGY™



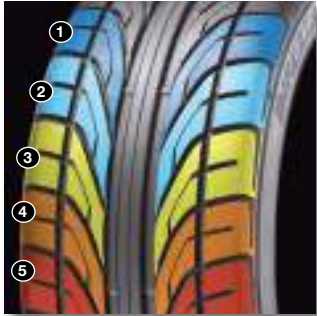
Innovative Multi-Radius Tread Technology distributes pressure evenly over the contact patch through all stages of cornering, for excellent dry traction and handling while enhancing wet performance.

VERSALOAD TECHNOLOGY™



By optimizing the tire mold for each tire size, Versaload Technology helps maximize the amount of the footprint that comes in contact with the road for consistent traction, handling, ride comfort and treadwear under various loading conditions.

5-PITCH TECHNOLOGY™



5-Pitch Technology counterbalances vehicle disturbance while minimizing road and pass-by noise. Five different block sizes create various frequencies to help break up sound waves, so drivers can enjoy a quiet ride.

HYDRO-PADDLE TECHNOLOGY™



Hydro-Paddle Technology utilizes tread grooves to help pull water quickly and efficiently through the tread pattern. Its hydrodynamic design evacuates water through a narrower channel to help keep more rubber on the road for outstanding traction.

TWIN HYDRO-PADDLE TECHNOLOGY™



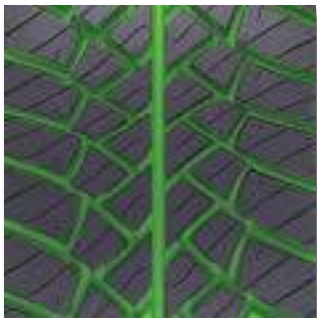
Twin Hydro-Paddle Technology employs two tread regions to help efficiently evacuate water out from under the footprint for responsive handling on wet roads. There are no sipes in this tread design, which means quick, turbulence-free water dispersion.

MULTI-PITCH TREAD DESIGN TECHNOLOGY™



Multi-Pitch Tread Design Technology uses various sizes of tread blocks which produce specific sound frequencies calibrated to help cancel each other out, so drivers can enjoy a smooth, quiet ride.

TRACTION WEB TECHNOLOGY™



The Traction Web Technology tread pattern features a web-like block and groove alignment. This increases responsiveness, optimizes water evacuation and enhances traction for confident wet, dry and situational handling.

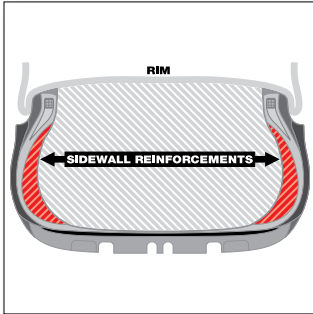
MSI TRACTION TECHNOLOGY™



MSI Traction Technology features a combination of lateral tread grooves, multiple tread block edges and cross sipes. These elements work together to create scores of biting edges which enhance rubber-to-road contact for excellent wet and dry traction, handling and responsiveness.

DUNLOP® TECHNOLOGIES

DUNLOP SELF-SUPPORTING TECHNOLOGY®



Dunlop Self-Supporting Technology incorporates special reinforcements into the tire sidewalls so that driving may continue for up to 50 miles at speeds up to 50 mph, even after a complete loss of air pressure. Refer to the run-flat owner's manual/limited warranty recommendations on operation at low or no air pressure. Tire pressure monitoring system required. Sold separately.

EVAQUA GROOVES™



Angled Evaqua Grooves are situated to help efficiently evacuate water away from the footprint for responsive handling on wet roads.

ACTIVE TRACTION SIPE SYSTEM™

Dunlop's cutting-edge Active Traction Sipe System is key to the ability of the SP Winter Sport 3D® to maintain optimum performance as driving conditions change. This integrated design consists of three unique types of sipes positioned throughout the treadface. Together, they help pull, grip and enhance traction to help provide high-performance cornering and handling in icy, snowy, wet and dry driving conditions.

Unparalleled Pulling Power



The center-block sipes help "pull," which results in superior traction and braking on ice and snow.

Confident Stability



High-amplitude sipes enhance lateral stability for confident handling in wet and slushy conditions.

3D Grip



At low speeds, the 3D shoulder sipes are open and flexible to help provide "biting" edges for strong grip in winter driving conditions.



In dry conditions, the 3D sipes lock together to help provide a solid, stable surface for superb dry handling.

4D SIPE SYSTEM



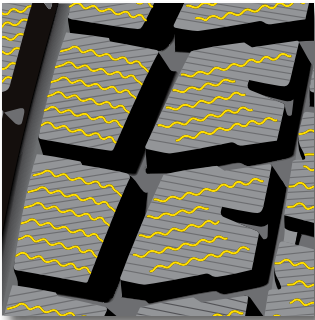
An increased number of sipes across the tire spectrum help provide extra traction during winter conditions. With self-interlocking and transversal sipes, the 4D Sipe System was specifically designed to enhance snow handling performance.

V-SHAPED GROOVES AND DEEP SNOW NOTCHES



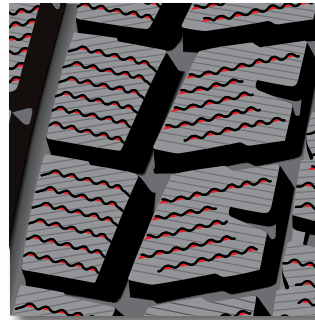
These uniquely shaped grooves help optimize winter performance, while the deep snow notches aid in increased snow traction.

MAXX SHARP EDGE WITH MIURA-ORI SIPES



Maxx Sharp Edge with Miura-Ori Sipes utilizes an inventive zigzag sipe pattern to maximize surface contact. Not only does this promote even wear, but it also helps prevent block distortion.

NANO-FIT RUBBER



Nano-Fit Rubber is an innovative material that is both flexible and rigid. These distinctive properties help tire tread latch on to icy surfaces.

NOISESHIELD TECHNOLOGY®



Polyurethane foam bonded to the tire's inner surface helps to reduce the level of interior vehicle noise, offering passengers a quieter, more comfortable ride.

PERFORMANCE



SP Sport Maxx® GT	SP Sport Maxx RT2	Direzza® DZ102	Signature HP	SP Sport® 5000	SP Sport 7000 A/S®
Outstanding Driver Feedback and Responsive Handling	A Champion in Grip and Steering Precision	Sleek Styling Meets Impressive Handling for Head-Turning Performance	Bold Styling Meets Experienced Handling for All-Season Performance	High Performance All-Season Tires	All-Season High Performance and a Smooth, Quiet Ride



	SUMMER UHP										ALL-SEASON UHP	ALL-SEASON SPORT/TOURING																														
	SP Sport Maxx® GT	SP Sport Maxx® GT with NoiseShield Technology® (Pg. 136)	SP Sport Maxx® GT ROF (Pg. 136)	Sport Maxx® RT™	Sport Maxx® RT™ with NoiseShield Technology® (Pg. 138)	Sport Maxx® RT™ ROF (Pg. 138)	SP Sport Maxx® TT (Pg. 140)	SP Sport Maxx® TT DSST™ (Pg. 140)	SP Sport Maxx® (Pg. 142)	SP Sport Maxx® DSST™ ROF (Pg. 142)	Direzza® DZ102 (Pg. 144)	Sport Maxx Race™ (Pg. 146)	Sport Maxx RT2 (Pg. 148)	SP Sport Maxx® 060, SP Sport Maxx® 060 DSST™ CTT, SP Sport Maxx® 060 DSST™ CTT with Noise Reduction Technology® (Pg. 149)	SP Sport Maxx® A, SP Sport Maxx® A1	SP Sport 2030	SP Sport® 2050 (Pg. 152)	SP Sport® 600 (Pg. 153)	SP Sport Maxx® GT 600 DSST™ (Pg. 153)	Sport BlueResponse™ (Pg. 154)	SP Sport® Fast Response™ (Pg. 155)	SP Sport Maxx (Pg. 156)	SP Sport® 01 (Pg. 156)	SP Sport® 01 DSST™ ROF (Pg. 156)	SP Sport® 01 A	SP Sport® 01 A/S (Pg. 160)	SP Sport® 01 A DSST™ ROF	SP Sport® 01 A/S DSST™ ROF (Pg. 160)	Signature HP (Pg. 162)	SP Sport Maxx® A1 A/S	SP Sport Maxx® A1-A A/S (Pg. 164)	SP Sport® 7010 A/S DSST™ (Pg. 165)	SP Sport® 7000 A/S® (Pg. 166)	SP Sport® 4000® DSST™ CTT (Pg. 167)	SP Sport® 5000	SP Sport® 5000M (Pg. 168)	SP Sport® 5000M DSST™ CTT (Pg. 168)	SP Sport® 5000 DSST™ with Noise Reduction Technology® (Pg. 168)	SP Sport® 5100 (Pg. 170)			
205/40R18					86W																																					
215/40R18																										85Y																
215/45R18						92Y*																									93W							89V, 89W				
225/40Zr18																																										
225/40R18										92W			88Y	88Y	88Y												92H				92W											
225/45R18										95W																						95W										
225/50R18																															94V											
225/55R18																																			97V							
225/60R18									100H																																	
235/40Zr18	95Y					95Y*																																				
235/40R18	91Y									95W																																
235/45Zr18																																										
235/45R18																																										
235/50Zr18													94Y																												94V	
235/50R18																97W																										
245/35Zr18																																										
245/35R18						92Y																																				
245/40R18																																										
245/40Zr18	93Y					97Y*																																				
245/40R18																	93Y	93W									93Y				93W											
245/45Zr18																																										
245/45R18	96Y	96Y								100W																																
245/50R18																																										
245/50Zr18	104Y																																									
255/35Zr18																																										
255/35R18	94Y					94Y*																																				
255/40R18	95W*	95Y															95Y	95Y																								
255/45R18																																										
255/45Zr18																																										
255/55R18																																										
265/35R18																																										
265/45Zr18	101Y																																									
275/35R18																																										
275/40R18																																										
275/45Zr18	107Y																																									
285/35R18	97W	97Y																																								
225/35R19																																										
225/40R19																																										
225/45R19																																										
235/35R19																																										
235/35Zr19																																										
235/40R19																																										
235/50R19																																										
245/30R19											99V																															
245/35R19																																										

*Discontinued 2016.

PERFORMANCE TIRE SELECTOR CHART

PERFORMANCE

	SUMMER UHP						ALL-SEASON UHP			ALL-SEASON SPORT/TOURING																																	
	SP Sport Maxx® GT with NoiseShield Technology® (Pg. 136)	SP Sport Maxx® GT ROF (Pg. 136)	Sport Maxx RT™ with NoiseShield Technology® (Pg. 138)	Sport Maxx RT™ ROF (Pg. 138)	SP Sport Maxx® TT (Pg. 140)	SP Sport Maxx® TT DSST™ (Pg. 140)	SP Sport Maxx® DSST™ ROF (Pg. 142)	Direzza® DZ102 (Pg. 144)	Sport Maxx Race™ (Pg. 146)	Sport Maxx RT2	Sport Maxx RT2 ROF (Pg. 148)	SP Sport Maxx® 050, SP Sport Maxx® 050 DSST™ CTT	SP Sport Maxx® 050 DSST™ CTT with Noise Reduction Technology® (Pg. 149)	SP Sport Maxx® A, SP Sport Maxx® A1	SP Sport Maxx® 101 (Pg. 150)	SP Sport® 2030	SP Sport® 2050 (Pg. 152)	SP Sport® 600 (Pg. 153)	SP Sport Maxx® GT 600 DSST™ (Pg. 153)	Sport BluResponse™ (Pg. 154)	SP Sport® Fast Response™ (Pg. 155)	SP Quattro Maxx (Pg. 156)	SP Sport® 01 (Pg. 158)	SP Sport® 01 DSST™ ROF (Pg. 158)	SP Sport® 01 A	SP Sport® 01 A/S (Pg. 160)	SP Sport® 01 A DSST™ ROF	SP Sport® 01 A/S DSST™ ROF (Pg. 160)	Signature HP (Pg. 162)	SP Sport Maxx® A1 A/S	SP Sport Maxx® A1-A A/S (Pg. 164)	SP Sport® 7010 A/S DSST™ (Pg. 165)	SP Sport 7000 A/S® (Pg. 166)	SP Sport 4000® DSST™ CTT (Pg. 167)	SP Sport® 5000	SP Sport® 5000M (Pg. 168)	SP Sport® 5000 DSST™ CTT	SP Sport® 5000M DSST™ CTT (Pg. 168)	SP Sport® 5000 DSST™ with Noise Reduction Technology® (Pg. 168)	SP Sport® 5100 (Pg. 170)			
245/35ZR19			93Y*					93Y																																			
245/40R19	94Y																											94W															
245/40RF19												94W																															
245/45RF19												98Y																															
245/40ZR19	98Y						94W												94Y																								
245/45ZR19		98Y																								98Y																	
245/45R19		98Y	102Y										98Y															98W	98V														
255/30ZR19			91Y*										98Y																														
255/35R19			96Y																																								
255/35ZR19	96Y		96Y*					96Y																																			
255/40RF19				100Y*																																				94V			
255/40R19	96V																																										
255/40RF19																																									96V		
255/45R19						100V																																					
255/50R19																																											
265/30R19								93W*																																			
265/35R19												94Y																															
265/35ZR19	98Y		98Y											98Y																													
265/35RF19																																											
275/30R19							96W																																				
275/35ZR19																										96Y																	
275/35R19		96Y																																									
275/40R19		101Y	101Y								101Y																																
275/40ZR19			101Y																								101Y*																
275/45ZR19				108Y*																																							
275/55R19						111V																																					
285/30ZR19			98Y											98Y																													
285/35ZR19	99Y*										99W																																
305/30ZR19																																											
325/30ZR19														102Y																													
325/30ZR19														101Y																													
225/35R20		90Y																																									
245/35R20		95Y																																									
245/35ZR20				95Y*				95W	91Y																																		
245/40ZR20	99Y							99W																																			
255/30R20		92Y*																																									
255/35ZR20	97Y										97Y																																
255/35R20																																											
255/40ZR20																																											
255/40RF20																				97(Y)																							
255/40RF20																																										97W	
255/45R20	101W											105Y																															
265/30ZR20	94Y																																										
265/35R20	99Y																																										
265/35ZR20											99Y																																
265/45R20	104Y																																										

*Discontinued 2016.

PERFORMANCE TIRE SELECTOR CHART

	SUMMER UHP													ALL-SEASON UHP	ALL-SEASON SPORT/TOURING																							
	SP Sport Maxx® GT SP Sport Maxx® GT with NoiseShield Technology® (Pg. 136)	SP Sport Maxx® GT ROF (Pg. 136)	Sport Maxx RT™ with NoiseShield Technology® (Pg. 138)	Sport Maxx RT™ ROF (Pg. 138)	SP Sport Maxx® TT (Pg. 140)	SP Sport Maxx® TT DSST™ (Pg. 140)	SP Sport Maxx® (Pg. 142)	SP Sport Maxx® DSST™ ROF (Pg. 142)	Direzza® DZ102 (Pg. 144)	Sport Maxx Race™ (Pg. 146)	Sport Maxx RT2 Sport Maxx RT2 ROF (Pg. 148)	SP Sport Maxx® 060, SP Sport Maxx® 060 DSST™ CTT SP Sport Maxx® 060 DSST™ CTT with Noise Reduction Technology® (Pg. 149)	SP Sport Maxx® A, SP Sport Maxx® A1 SP Sport Maxx® 101 (Pg. 150)	SP Sport® 2020 SP Sport® 2050 (Pg. 152)	SP Sport® 600 (Pg. 153)	SP Sport Maxx® GT 600 DSST™ (Pg. 153)	Sport BlueResponse™ (Pg. 154)	SP Sport® Fast Response™ (Pg. 155)	SP Quattro Maxx (Pg. 156)	SP Sport® 01 (Pg. 158)	SP Sport® 01 DSST™ ROF (Pg. 158)	SP Sport® 01 A SP Sport® 01 A/S (Pg. 160)	SP Sport® 01 A DSST™ ROF SP Sport® 01 A/S DSST™ ROF (Pg. 160)	Signature HP (Pg. 162)	SP Sport Maxx® A1 A/S SP Sport Maxx® A1-A A/S (Pg. 164)	SP Sport® 7010 A/S DSST™ (Pg. 165)	SP Sport 7000 A/S® (Pg. 166)	SP Sport 4000® DSST™ CTT (Pg. 167)	SP Sport® 5000 SP Sport® 5000M (Pg. 168)	SP Sport® 5000 DSST™ CTT SP Sport® 5000M DSST™ CTT (Pg. 168)	SP Sport® 5000 DSST™ with Noise Reduction Technology® (Pg. 168)	SP Sport® 5100 (Pg. 170)						
265/45ZR20	108Y																																					
265/50R20																																						
275/30ZR20					97Y*																																	
275/30R20	97Y	97Y																																				
275/35ZR20	102Y						102Y																															
275/40R20		106W																																				
275/40ZR20					106Y*																																	
275/50R20							109W, 113W*																															
275/55R20																																						
285/30ZR20			99Y			99Y																																
285/35ZRF20																	100Y																					
285/35RF20																																						
285/40R20												108Y																										
295/30ZR20	101Y								101Y																													
305/30ZR20									103Y																													
315/35R20		110W																																				
325/30ZR20	102Y																																					
255/40R21	102Y																																					
265/40ZR21	105Y																																					
265/45R21																																						
275/30ZR21	98Y, 103Y		98Y																																			
275/35ZR21	103Y																																					
275/40ZR21						107Y																																
285/35R21							105Y																															
295/35R21						107Y																																
325/30R21							108Y																															
325/30ZR21								108Y																														
265/35ZR22					102Y*			102W																														

*Discontinued 2016.



SP SPORT MAXX® GT

(Select sizes with ROF[†]/NoiseShield Technology®)

Outstanding Driver Feedback and Responsive Handling



FEATURES

TOUCH TECHNOLOGY™

Multi-Radius Tread Technology™

Flatter tread profile

Reinforced sidewall construction

Asymmetric tread design

Unique bead fit system

Hybrid Jointless Band Technology™

Performance compounding

Non-directional tread

BENEFITS

Helps provide enhanced communication between driver and road for fast driver feedback and precise steering response

Helps deliver superb dry handling while maintaining wet handling

Enlarged contact patch for enhanced cornering capability

Helps reduce lateral flex during cornering to enhance the driver's feel for the road

Helps provide a balance of wet and dry performance

Helps enhance force transmission between tire and wheel for superb driver feedback

Helps maintain tire shape for smooth performance at highway speeds and helps prevent flatspotting after vehicle is parked for extended periods

Enhanced ride and traction

Allows for tire rotation on staggered fitments common to high-end performance vehicles, helping to promote long tread life



Dry Traction



Ultra Wet Traction



Cornering Stability



Steering Responsiveness



Original Equipment on Audi, Bentley, BMW, Cadillac, Jaguar, Mercedes-Benz, Porsche and Volkswagen

[†] Refer to the run-flat owner's manual/limited warranty recommendations on operation at low or no air pressure. Tire pressure monitoring system required. Sold separately.

SP SPORT MAXX GT SPECIFICATIONS

SIZE	SERVICE DESCRIPTION	LOAD RANGE	SIDEWALL	PRODUCT CODE	MATERIAL NUMBER	APPROVED RIM WIDTH (INS)	MEASURING RIM WIDTH (INS)	SECTION WIDTH (INS)	OVERALL DIAMETER (INS)	MAX LOAD (LBS)	TREAD DEPTH (IN 32NDS)	REVS/MILE	UTQG	ORIGINAL EQUIPMENT FITMENT
235/40R18	91Y	SL	BLT	265023803	217593	8.0 - 9.5	8.5	9.5	25.4	1,356	10	823	240 AA A	Mercedes-Benz E-Class: 10-11 (F)
235/40ZR18	95Y	XL	BLT	265023833	228284	8.0 - 9.5	8.5	0.0	25.4	1,521	10	823	240 AA A	Mercedes-Benz AMG: 13
235/45ZR18	94Y	SL	BLT	265023813	222113	7.5 - 9.0	8.0	9.3	26.3	1,477	9	794	240 AA A	Porsche Boxster/Cayman: 14 (F)
245/40ZR18	93Y	SL	BLT	265023784	209674	8.0 - 9.5	8.5	9.8	25.7	1,433	10	813	240 AA A	Audi A4: 10-15
245/45R18	96Y	SL	BLT	265023828	225396	7.5 - 9.0	8.0	9.6	26.7	1,565	10	784	240 AA A	Audi A4: 13
245/50ZR18	104Y	XL	BLT	265023857	226426	7.0 - 8.5	7.5	10.0	27.7	1,984	9	755	240 AA A	
255/35R18	94Y	XL	BLT	265023804	217603	8.5 - 10.0	9.0	10.2	25.0	1,477	10	836	240 AA A	Mercedes-Benz E-Class: 10-11 (R)
*255/40R18	95W	SL	BLT	265023786	209662	8.5 - 10.0	9.0	10.2	26.0	1,521	10	803	240 AA A	Mercedes-Benz SL-Class: 09-13 (F)
265/45ZR18	101Y	SL	BLT	265023814	222114	8.5 - 10.0	9.0	10.5	27.4	1,819	8	764	240 AA A	Porsche Boxster/Cayman: 14 (R)
275/45ZR18	107Y	XL	BLT	265023858	226427	8.5 - 10.5	9.0	10.8	27.8	2,149	9	753	240 AA A	
285/35R18	97W	SL	BLT	265023787	209663	9.5 - 11.0	10.0	11.4	25.9	1,609	9	807	240 AA A	Mercedes-Benz SL-Class: 09-13 (R)
245/40ZR19	98Y	XL	BLT	265023851	223452	8.0 - 9.5	8.5	9.8	26.7	1,653	9	782	240 AA A	
255/35ZR19	96Y	XL	BLT	265023729	206320	8.5 - 10.0	9.0	10.2	26.0	1,565	10	803	240 AA A	Audi A5: 11-15
255/40R19	96V	SL	BLT	265023788	209664	8.5 - 10.0	9.0	10.2	27.0	1,545	9	773	240 AA A	Volkswagen Tiguan: 09-13
*265/35ZR19	98Y	XL	BLT	265023728	210225	9.0 - 10.5	9.5	10.7	26.3	1,653	9	795	240 AA A	Mercedes-Benz SL-Class: 09 (F)
*285/35ZR19	99Y	XL	BLT	265023718	208344	9.5 - 11.0	10.0	11.4	26.9	1,929	9	777	240 AA A	
245/40ZR20	99Y	XL	BLT	265023801	216801	8.0 - 9.5	8.5	9.8	27.7	1,709	9	754	240 AA A	Jaguar XJ: 10 (F), Cadillac ELR-V: 16-17
255/35ZR20	97Y	XL	BLT	265023859	230824	8.5 - 10.0	9.0	10.2	27.0	1,609	9	774	240 AA A	
255/45R20	101W	SL	BLT	265023783	209673	8.0 - 9.5	8.5	10.0	29.1	1,819	9	719	240 AA A	Audi Q5: 09-14
265/30ZR20	94Y	XL	BLT	265023794	214431	9.0 - 10.0	9.5	10.7	26.3	1,477	10	795	240 AA A	Audi A5: 09-14
265/35R20	99Y	XL	BLT	265023812	221787	9.0 - 10.5	9.5	10.7	27.3	1,709	9	765	240 AA A	Audi A7: 12-17
265/45R20	104Y	SL	VSB	265025943	218489	8.5 - 10.0	9.0	10.5	29.4	1,984	10	712	240 AA A	Mercedes-Benz ML-Class: 13
265/45ZR20	108Y	XL	BLT	265023805	218533	8.5 - 10.0	9.0	10.5	29.4	2,205	8	711	240 AA A	Bentley Mulsanne: 11-17 (F)
275/30R20	97Y	XL	BLT	265023822	223821	9.0 - 10.0	9.5	10.9	28.7	1,609	9	729	240 AA A	
275/35ZR20	102Y	XL	BLT	265023802	216802	9.0 - 11.0	9.5	10.9	27.6	1,874	9	758	240 AA A	Jaguar XJ: 10 (R)
295/30ZR20	101Y	XL	BLT	265023820	222981	10.0 - 11.0	10.5	11.9	27.0	1,819	8	774	240 AA A	
325/30ZR20	102Y	SL	BLT	265023785	209677	11.0 - 12.0	11.5	13.0	27.7	1,874	9	755	240 AA A	Mercedes-Benz SL-Class: 09 (R)
255/40R21	102Y	XL	BLT	265023856	225064	8.5 - 10.0	9.0	10.2	29.0	1,874	9	720	240 AA A	
265/40ZR21	105Y	XL	BLT	265023806	218534	8.5 - 10.0	9.0	10.5	30.4	2,039	8	689	240 AA A	Bentley Mulsanne: 11-17 (R)
275/30ZR21	98Y	XL	BLT	265023834	230678	9.0 - 10.0	9.5	10.9	27.5	1,653	10	760	240 AA A	
275/35ZR21	103Y	XL	BLT	265023825	223898	9.0 - 11.0	9.5	10.9	28.5	1,929	9	732	240 AA A	Audi A8: 11-17
SP SPORT MAXX GT NST (NOISESHIELD TECHNOLOGY)														
275/30ZR21	103Y	XL	BLT	265040900	228934	9.0 - 11.0	9.5	10.9	28.5	1,929	9	732	240 AA A	
SP SPORT MAXX GT RDF														
245/45R18	96Y	SL	BLT	265027403	217113	7.5 - 9.0	8.0	9.6	26.7	1,565	9	784	240 AA A	BMW 5 Series/6 Series: 11-13, 16-17 (F)
245/50R18	100Y	SL	BLT	265027400	208839	7.0 - 8.5	7.5	10.0	27.7	1,754	9	755	240 AA A	BMW 7 Series/5 GT: 09-13, 16-17
245/50R18	100W	SL	BLT	265027407	219078	7.0 - 8.5	7.5	10.0	27.7	1,764	10	755	240 AA A	
255/40R18	95Y	SL	BLT	265027410	223103	8.5 - 10.0	9.0	10.2	26.0	1,521	10	803	240 AA A	
275/40R18	99Y	SL	BLT	265027404	217114	9.0 - 11.0	9.5	10.9	26.7	1,709	9	784	240 AA A	BMW 5 Series/6 Series: 11-13, 16-17 (R)
285/35R18	97Y	SL	BLT	265027411	223104	9.5 - 11.0	10.0	11.4	25.8	1,609	10	808	240 AA A	
225/35R19	88Y	XL	BLT	265027416	227098	7.5 - 9.0	8.0	9.1	25.2	1,235	9	828	240 AA A	BMW 2 Series: 16, BMW 1 Series: 17
245/30R19	89Y	XL	BLT	265027417	227099	8.0 - 9.0	8.5	9.8	24.8	1,279	9	841	240 AA A	BMW 2 Series: 16, BMW 1 Series: 17
245/40R19	94Y	SL	BLT	265023807	218842	8.0 - 9.5	8.5	9.8	26.7	1,477	9	782	240 AA A	BMW 5 Series/6 Series: 11, 16-17
245/45R19	98Y	SL	BLT	265027401	209626	7.5 - 9.0	8.0	9.6	27.7	1,653	9	755	240 AA A	BMW 7 Series/5 GT: 09-13, 16-17
275/35R19	96Y	SL	BLT	265023808	218843	9.0 - 11.0	9.5	10.9	26.6	1,565	9	787	240 AA A	BMW 5 Series/6 Series: 11, 16-17
275/40R19	101Y	SL	BLT	265027402	210621	9.0 - 11.0	9.5	10.9	27.7	1,819	10	755	240 AA A	BMW 7 Series/5 GT: 09-13, 16-17
225/35R20	90Y	XL	BLT	265027408	222700	7.5 - 9.0	8.0	9.1	26.2	1,323	10	797	240 AA A	BMW 3 Series: 16-17
245/35R20	95Y	XL	BLT	265027405	217240	8.0 - 9.5	8.5	9.8	26.8	1,521	9	781	240 AA A	BMW 5 Series/6 Series: 11-13, 16-17 (F)
*255/30R20	92Y	XL	BLT	265027409	222701	8.5 - 9.5	9.0	10.2	26.1	1,389	9	802	240 AA A	BMW 3 Series: 16-17
275/30R20	97Y	XL	BLT	265027406	217321	9.0 - 10.0	9.5	10.9	26.5	1,609	10	788	240 AA A	BMW 5 Series/6 Series: 11-13, 16-17 (R)
275/40R20	106W	XL	BLT	265027415	225846	9.0 - 11.0	9.5	10.9	28.7	2,094	10	729	240 AA A	BMW X5/X6 Series: 16-17
315/35R20	110W	XL	BLT	265027414	225845	10.5 - 12.5	11.0	12.6	28.7	2,337	10	729	240 AA A	BMW X5/X6 Series: 16-17

*Discontinued 2016.



SPORT MAXX RT™

(Select sizes with ROF[†]/NoiseShield Technology[®])

Ultra High-Performance With Grip and Braking Developed at the Race Track



FEATURES

Adaptive tread compound

Massive outer shoulder blocks

Power braking blocks

Low weight construction

BENEFITS

Helps deliver racing grip and improved braking performance

Help promote increased stability and sure handling when cornering

Help enhance stopping power for shorter braking distance at high speeds

Helps to lower rolling resistance for better performance



Dry Traction



Ultra Wet Traction



Cornering Stability



Steering Responsiveness



Original Equipment on Audi, Maserati, Mini and Subaru

[†] Refer to the run-flat owner's manual/limited warranty recommendations on operation at low or no air pressure. Tire pressure monitoring system required. Sold separately.

SPORT MAXX RT SPECIFICATIONS

SIZE	SERVICE DESCRIPTION	LOAD RANGE	SIDEWALL	PRODUCT CODE	MATERIAL NUMBER	APPROVED RIM WIDTH (INS)	MEASURING RIM WIDTH (INS)	SECTION WIDTH (INS)	OVERALL DIAMETER (INS)	MAX LOAD (LBS)	TREAD DEPTH (IN 32NDS)	REVS/ MILE	UTQG	ORIGINAL EQUIPMENT FITMENT
205/45R17	88W	XL	BLT	265029326	227384	6.5 - 7.5	7.0	8.1	24.3	1,235	9	862	240 AA A	Mini Cooper S: 16-17
225/45ZR17	94Y	XL	BLT	265029301	224662	7.0 - 8.5	7.5	8.9	25.0	1,477	10	836	240 AA A	
* 225/45ZR17	91Y	SL	BLT	265029302	224663	7.0 - 8.5	7.5	8.9	25.0	1,356	10	836	240 AA A	
* 225/50R17	94Y	SL	BLT	265029304	224665	6.0 - 8.0	7.0	9.2	25.9	1,477	9	807	240 AA A	
225/50R17	98Y	XL	BLT	265029333	230365	6.0 - 8.0	7.0	9.2	25.9	1,653	10	807	240 AA A	
225/55R17	97Y	SL	BLT	265029305	224666	6.0 - 8.0	7.0	9.2	26.8	1,609	10	780	240 AA A	
235/45R17	97Y	XL	BLT	265029303	224664	7.5 - 9.0	8.0	9.3	25.4	1,609	9	824	240 AA A	
235/45R17	94W	SL	BLT	265029322	226946	7.5 - 9.0	8.0	9.3	25.4	1,477	9	824	240 AA A	Subaru Impreza WRX: 16 - 17
* 245/40R17	91Y	SL	BLT	265029300	224661	8.0 - 9.5	8.5	9.8	24.7	1,356	10	846	240 AA A	
* 225/40ZR18	92Y	XL	BLT	265029306	224667	8.0 - 9.0	7.5	9.1	25.1	1,389	9	833	240 AA A	
225/45R18	95Y	XL	BLT	265029335	230367	7.5 - 9.0	9.0	9.6	26.7	1,521	10	784	240 AA A	
* 235/40ZR18	95Y	XL	BLT	265029307	224668	8.0 - 9.5	8.5	9.5	25.4	1,521	9	823	240 AA A	
245/35ZR18	92Y	XL	BLT	265029313	224674	8.0 - 9.5	8.5	9.8	25.8	1,389	10	810	240 AA A	
* 245/40ZR18	97Y	XL	BLT	265029308	224669	7.5 - 9.0	8.0	9.8	25.7	1,609	10	813	240 AA A	
245/40R18	97W	XL	BLT	265029323	226947	8.0 - 9.5	8.5	9.8	25.7	1,609	9	813	240 AA A	Subaru Impreza WRX: 16 - 17
245/45ZR18	100Y	XL	BLT	265029309	224670	7.5 - 9.0	9.0	9.6	26.7	1,764	10	784	240 AA A	
* 255/35ZR18	94Y	XL	BLT	265029312	224673	8.5 - 10.0	9.0	10.2	25.0	1,477	9	836	240 AA A	
225/40R19	93Y	XL	BLT	265029332	230364	7.5 - 9.0	8.0	9.1	26.1	1,433	10	801	240 AA A	
* 235/35ZR19	91Y	XL	BLT	265029311	224672	8.0 - 9.5	8.5	9.5	25.5	1,356	10	820	240 AA A	
235/35ZR19	91Y	XL	BLT	265029321	226429	8.0 - 9.5	8.5	9.5	25.5	1,356	9	821	240 AA A	
235/35R19	91Y	XL	BLT	265029329	227422	8.0 - 9.5	8.5	9.5	25.5	1,356	9	821	240 AA A	Audi A3: 15
* 245/35ZR19	93Y	XL	BLT	265029324	226970	8.0 - 9.5	8.5	9.8	25.8	1,433	9	810	240 AA A	
245/35ZR19	93Y	XL	BLT	265029330	228743	8.0 - 9.5	8.5	9.8	25.8	1,433	8	810	240 AA A	
245/45ZR19	98Y	SL	BLT	265029317	225266	7.5 - 9.0	8.0	9.6	27.7	1,653	10	755	240 AA A	Maserati Quattroporte: 13-17, Maserati Ghibli: 14-17
245/45R19	102Y	XL	BLT	265029319	225466	7.5 - 9.0	8.0	9.6	27.7	1,874	10	755	240 AA A	
* 255/30ZR19	91Y	XL	BLT	265029314	224675	8.5 - 9.5	9.0	10.2	25.1	1,356	10	833	240 AA A	
* 255/35ZR19	96Y	XL	BLT	265029315	224676	8.5 - 10.0	9.0	10.2	26.0	1,565	9	803	240 AA A	
255/35R19	96Y	XL	BLT	265029334	230366	8.5 - 10.0	9.0	10.2	26.0	1,565	10	803	240 AA A	
* 255/40ZR19	100Y	XL	BLT	265029310	224671	8.5 - 10.0	9.0	10.2	27.0	1,764	10	773	240 AA A	
265/35ZR19	98Y	XL	BLT	265029331	228744	9.0 - 10.5	9.5	10.7	26.3	1,653	9	794	240 AA A	
275/40ZR19	101Y	SL	BLT	265029318	225267	9.0 - 11.0	9.5	10.9	27.7	1,819	10	755	240 AA A	Maserati Quattroporte: 13-17, Maserati Ghibli: 14-17
275/40R19	101Y	SL	BLT	265029320	225605	9.0 - 11.0	9.5	10.9	27.7	1,819	10	755	240 AA A	
285/30ZR19	98Y	XL	BLT	265029316	224677	9.5 - 11.0	10.0	11.4	25.8	1,653	10	810	240 AA A	
285/30ZR20	99Y	XL	BLT	265029325	227161	9.5 - 10.5	10.0	11.4	26.8	1,709	10	781	240 AA A	
SPORT MAXX RT NST (NOISESHIELD TECHNOLOGY)														
275/30ZR21	98Y	XL	BLT	265029900	227193	9.0 - 10.0	9.5	10.9	27.5	1,653	9	760	240 AA A	Audi R57: 14-15
SPORT MAXX RT ROF														
205/45R17	88W	XL	BLT	265029327	227385	6.5 - 7.5	7.0	8.1	24.3	1,235	9	862	240 AA A	Mini Cooper: 14
205/40R18	86W	XL	BLT	265029328	227386	7.0 - 8.0	7.5	8.4	24.5	1,168	9	855	240 AA A	Mini Cooper S: 16-17

*Discontinued 2016.



SP SPORT MAXX® TT

(Select sizes with DSST®)

Driving Precision Powered by Dupont™ Kevlar®



FEATURES

TOUCH TECHNOLOGY™

Multi-Radius Tread Technology™

Flatter tread profile

Asymmetric tread design

Unique bead fit system

DuPont™ Kevlar® reinforced lower sidewalls

Motorsport-inspired tread

Jointless Band Technology™

Max Flange Shield®

BENEFITS

Helps provide enhanced communication between driver and road for fast driver feedback and precise steering response

Helps deliver superb dry handling while maintaining wet handling

Enlarged contact patch for enhanced cornering capability

Helps provide a balance of wet and dry performance

Helps enhance force transmission between tire and wheel for superb driver feedback

Helps enhance road feedback and driving precision

Helps enhance wet and dry grip while maintaining tread life

Helps maintain the tire's shape and enables smooth performance at highway speeds

Helps protect rims from accidental curb damage



Dry Traction



Ultra Wet Traction



Cornering Stability



Steering Responsiveness



Rugged Toughness from DuPont™ Kevlar®



Original Equipment on BMW

SP SPORT MAXX TT SPECIFICATIONS

SIZE	SERVICE DESCRIPTION	LOAD RANGE	SIDEWALL	PRODUCT CODE	MATERIAL NUMBER	APPROVED RIM WIDTH (INS)	MEASURING RIM WIDTH (INS)	SECTION WIDTH (INS)	OVERALL DIAMETER (INS)	MAX LOAD (LBS)	TREAD DEPTH (IN 32NDS)	REVS/MILE	UTQG	ORIGINAL EQUIPMENT FITMENT
* 275/40ZR19	101Y	SL	BLT	263027226	214774	9.0 - 11.0	9.5	10.9	27.7	1,819	10	755	240 AA A	
* 275/45ZR19	108Y	XL	BLT	263027239	225282	8.5 - 10.5	9.0	10.8	28.8	2,205	10	726	240 AA A	
* 245/35ZR20	95Y	XL	BLT	263027227	214775	8.0 - 9.5	8.5	9.8	26.8	1,521	10	781	240 AA A	
* 275/30ZR20	97Y	XL	BLT	263027231	214779	9.0 - 10.0	9.5	10.9	26.5	1,609	10	789	240 AA A	
* 275/40ZR20	106Y	XL	BLT	263027238	225281	9.0 - 11.0	9.5	10.9	28.7	2,094	10	729	240 AA A	
* 265/35ZR22	102Y	XL	BLT	263027230	214778	9.0 - 10.5	9.5	10.7	29.3	1,874	10	713	240 AA A	
SP SPORT MAXX TT DSST														
225/45R17	91W	SL	BLT	263027240	227094	7.0 - 8.5	7.5	8.9	25.0	1,356	10	837	240 AA A	BMW 2 Series: 16, BMW 1 Series: 17
245/40R17	91W	SL	BLT	263027241	227095	8.0 - 9.5	8.5	9.8	24.7	1,356	9	846	240 AA A	BMW 2 Series: 16, BMW 1 Series: 17

*Discontinued 2016.



SP SPORT MAXX®

(Select sizes with DSST® ROF†)

Luxury Sport Tire With Commanding Power



FEATURES

Multi-Radius Tread Technology™

Twin Hydro-Paddle Technology™

Integral Rubber Matrix tread comprised of an optimized blend of silica and high-structured carbon black

Continuous, solid center rib

5-Pitch Technology™

Jointless Band Technology™

Max Flange Shield®

Dunlop® Self-Supporting Technology (DSST)†*

BENEFITS

Helps deliver superb dry handling while maintaining wet handling

Incorporates a directional tread design that helps to rapidly and efficiently drain water for enhanced wet handling and deep-water performance

Demonstrates excellent acceleration and braking performance

Transfers lateral forces to help provide excellent stability at highway speeds

Aids noise reduction for a quiet ride

Helps maintain the tire's shape and enables smooth performance at highway speeds

Helps protect rims from accidental curb damage

Sidewall construction to help allow continued driving on a flat tire for up to 50 miles at 50 mph in normal conditions



Dry Traction



Ultra Wet Traction



Cornering Stability



Steering Responsiveness



Original Equipment on Audi, BMW, Jaguar, Lexus and Mercedes-Benz

† Refer to the run-flat owner's manual/limited warranty recommendations on operation at low or no air pressure. Tire pressure monitoring system required. Sold separately.

* Only on SP Sport Maxx DSST ROF.

SP SPORT MAXX SPECIFICATIONS

SIZE	SERVICE DESCRIPTION	LOAD RANGE	SIDEWALL	PRODUCT CODE	MATERIAL NUMBER	APPROVED RIM WIDTH (INS)	MEASURING RIM WIDTH (INS)	SECTION WIDTH (INS)	OVERALL DIAMETER (INS)	MAX LOAD (LBS)	TREAD DEPTH (IN 32NDS)	REVS/MILE	UTQG	ORIGINAL EQUIPMENT FITMENT
225/45R17	90W	SL	BSW	265023846	198848	7.0 - 8.5	7.5	8.9	24.9	1,323	10	836	240 A A	Lexus LS: 06-16 (F)
225/60R18	100H	SL	BSW	265023809	220161	6.0 - 8.0	6.5	9.0	28.6	1,764	10	731	300 A A	
235/50R19	99V	SL	BLT	265023823	223896	6.5 - 8.5	7.5	9.7	28.3	1,709	9	738	240 AA A	
255/45R19	100V	SL	BLT	265023824	223897	8.0 - 9.5	8.5	10.0	28.1	1,764	9	745	240 AA A	
275/55R19	111V	SL	BSW	265025755	201718	7.5 - 9.5	8.5	11.2	30.9	2,403	9	676	240 AA A	Mercedes-Benz GL-Class: 06-12
255/35R20	97Y	XL	BLT	265023939	209619	8.5 - 10.0	9.0	10.2	27.0	1,609	10	774	240 AA A	Jaguar XF: 08-13
255/35ZR20	97Y	XL	BLT	265040735	214437	8.5 - 10.0	9.0	10.2	27.0	1,609	10	774	240 AA A	Jaguar XFR: 10-15 (F)
275/35ZR20	102Y	XL	BSW	265023739	196519	9.0 - 11.0	9.5	10.9	27.6	1,874	10	758	240 AA A	Audi A8: 05-10
275/50R20	109W	SL	BSW	265023850	203391	7.5 - 9.5	8.5	11.2	30.9	2,271	9	676	240 AA A	Mercedes-Benz GL-Class: 07-12
275/50R20	113W	XL	BLT	265023942	232897	7.5 - 9.5	8.5	11.2	30.9	2,535	9	677	240 AA A	
*275/50R20	113W	XL	BLT	265023941	225130	7.5 - 9.5	8.5	11.2	30.9	2,535	9	677	240 AA A	Mercedes-Benz AMG: 13
285/30ZR20	99Y	XL	BLT	265040736	214438	9.5 - 10.5	10.0	11.4	26.8	1,709	10	780	240 AA A	Jaguar XFR: 10-15 (R)
275/40ZR21	107Y	XL	BLT	265023778	206587	9.0 - 11.0	9.5	10.7	29.6	2,149	10	704	240 AA A	Audi Q7: 08-10
295/35R21	107Y	XL	BSW	265023776	202041	10.0 - 11.5	10.5	11.9	29.1	2,149	10	718	240 AA A	Audi Q7: 07-15
SP SPORT MAXX DSST R0F														
275/40R19	101Y	XL	BLT	265027402	210621	9.0 - 11.0	9.5	10.9	27.7	1,819	19	755	240 AA A	
285/35R21	105Y	XL	BLT	265026337	219124	9.5 - 11.0	10.0	11.4	28.9	2,039	8	724	240 AA A	BMW X5: 11-13 (F), BMW X6: 11-13 (F)
325/30R21	108Y	XL	BLT	265026338	219245	11.0 - 12.5	11.5	13.0	28.7	2,205	10	728	240 AA A	BMW X5: 11-13 (R), BMW X6: 11-13 (R)

*Discontinued 2016.



DIREZZA® DZ102

Sleek Styling Meets Impressive Handling for Head-Turning Performance



FEATURES

Aggressive Unidirectional Tread Design

Silicarbon Matrix™ is a special blend of silica and carbon black

5-Pitch Technology™ and wear trimming

Deeper lateral cuts and shoulder grooves

Performance-inspired tread and sidewall design

Jointless Band Technology™

Max Flange Shield®

BENEFITS

Offers better water evacuation performance in wet conditions

Offers enhanced wet and dry traction

Aid noise reduction and help reduce irregular wear

Maintain design and performance integrity

Enhance the overall appearance and ride of the vehicle

Enables smooth performance at highway speeds

Helps protect rims from accidental curb damage



Dry Traction



Ultra Wet Traction



Cornering Stability



Steering Responsiveness

DIREZZA DZ102 SPECIFICATIONS

SIZE	SERVICE DESCRIPTION	LOAD RANGE	SIDEWALL	PRODUCT CODE	MATERIAL NUMBER	APPROVED RIM WIDTH (INS)	MEASURING RIM WIDTH (INS)	SECTION WIDTH (INS)	OVERALL DIAMETER (INS)	MAX LOAD (LBS)	TREAD DEPTH (IN 32NDS)	REVS/ MILE	UTQG
195/50R15	82V	SL	BSW	265029800	226797	5.5 - 7.0	6.0	7.9	22.7	1,047	9	925	460 A A
195/55R15	85V	SL	BSW	265029820	226837	5.5 - 7.0	6.0	7.9	23.4	1,135	9	898	460 A A
205/50R15	86V	SL	BSW	265029801	226798	5.5 - 7.5	6.5	8.4	23.1	1,168	9	911	460 A A
205/55R15	88V	SL	BSW	265029831	226848	5.5 - 7.5	6.5	8.4	23.9	1,235	9	883	460 A A
195/50R16	84V	SL	BSW	265029802	226799	5.5 - 7.0	6.0	7.9	23.7	1,102	9	886	460 A A
205/45R16	87W	XL	BSW	265029811	226828	6.5 - 7.5	7.0	8.1	23.2	1,201	9	895	460 A A
205/50R16	87V	SL	BSW	265029803	226800	5.5 - 7.5	6.5	8.4	24.1	1,201	9	874	460 A A
205/55R16	91V	SL	BSW	265029841	226858	5.5 - 7.5	6.5	8.4	24.9	1,356	9	845	460 A A
215/50R16	90V	SL	BSW	265029804	226821	6.0 - 7.5	7.0	8.9	24.5	1,323	10	860	460 A A
215/55R16	93V	SL	BSW	265029842	226859	6.0 - 7.5	7.0	8.9	25.3	1,433	10	834	460 A A
225/50R16	92V	SL	BSW	265029805	226822	6.0 - 8.0	7.0	9.2	24.9	1,389	10	845	460 A A
225/55R16	95V	SL	BSW	265029843	226860	6.0 - 8.0	7.0	9.2	25.7	1,521	10	821	460 A A
205/45R17	88W	XL	BSW	265029812	226829	6.5 - 7.5	7.0	8.1	24.3	1,235	9	856	460 A A
205/50ZR17	93W	XL	BSW	265029806	226823	5.5 - 7.5	6.5	8.4	25.1	1,433	9	837	460 A A
215/45R17	91W	XL	BSW	265029813	226830	7.0 - 8.0	7.0	8.4	24.6	1,356	9	842	460 A A
215/50R17	91V	SL	BSW	265029807	226824	6.0 - 7.5	7.0	8.9	25.5	1,356	10	823	460 A A
215/55R17	94V	SL	BSW	265029844	226861	6.0 - 7.5	7.0	8.9	26.3	1,477	10	800	460 A A
225/45R17	94W	XL	BSW	265029814	226831	7.0 - 8.5	7.5	8.8	25.0	1,477	10	834	460 A A
225/50R17	94W	SL	BSW	265029808	226825	6.0 - 8.0	7.0	9.2	25.9	1,477	10	811	460 A A
235/45R17	94W	SL	BSW	265029815	226832	7.5 - 9.0	8.0	9.3	25.4	1,477	10	821	460 A A
235/50ZR17	96W	SL	BSW	265029809	226826	6.5 - 8.5	7.5	9.7	26.3	1,565	10	800	460 A A
235/55ZR17	99W	SL	BSW	265029845	226862	6.5 - 8.5	7.5	9.7	27.2	1,709	10	778	460 A A
245/40R17	91W	SL	BSW	265029821	226838	8.0 - 9.5	8.5	9.8	24.7	1,356	10	842	460 A A
245/45R17	95W	SL	BSW	265029816	226833	7.5 - 9.0	8.0	9.6	25.7	1,521	10	813	460 A A
255/40R17	94W	SL	BSW	265029822	226839	8.5 - 10.0	9.0	10.2	25.0	1,477	10	832	460 A A
225/40R18	92W	XL	BSW	265029823	226840	7.5 - 9.0	8.0	9.0	25.1	1,389	10	826	460 A A
225/45R18	95W	XL	BSW	265029817	226834	7.0 - 8.5	7.5	8.8	25.9	1,521	10	803	460 A A
235/40R18	95W	XL	BSW	265029824	226841	8.0 - 9.5	8.5	9.5	25.4	1,521	10	818	460 A A
235/50ZR18	97W	SL	BSW	265029810	226827	6.5 - 8.5	7.5	9.7	27.3	1,609	10	771	460 A A
245/40R18	97W	XL	BSW	265029825	226842	8.0 - 9.5	8.5	9.8	25.7	1,609	10	808	460 A A
245/45R18	100W	XL	BSW	265029818	226835	7.5 - 9.0	8.0	9.6	26.7	1,764	10	783	460 A A
255/35R18	94W	XL	BSW	265029829	226846	8.5 - 10.0	9.0	10.2	25.0	1,477	10	832	460 A A
255/45ZR18	99W	SL	BSW	265029819	226836	8.0 - 9.5	8.5	10.0	27.0	1,709	10	771	460 A A
265/35R18	97W	XL	BSW	265029830	226847	9.0 - 10.5	9.5	10.7	25.3	1,609	10	821	460 A A
275/35R18	95W	SL	BSW	265029832	226849	9.0 - 11.0	9.5	10.9	25.6	1,521	10	816	460 A A
275/40R18	99W	SL	BSW	265029826	226843	9.0 - 11.0	9.5	10.9	26.7	1,709	10	783	460 A A
225/35R19	88W	XL	BSW	265029833	226850	7.5 - 9.0	8.0	9.0	25.2	1,235	10	818	460 A A
235/35R19	91W	XL	BSW	265029846	226863	8.0 - 9.5	8.5	9.5	25.5	1,356	10	813	460 A A
245/35R19	93W	XL	BSW	265029834	226851	8.0 - 9.5	8.5	9.8	25.8	1,433	10	803	460 A A
245/40ZR19	94W	SL	BSW	265029827	226844	8.0 - 9.5	8.5	9.8	26.7	1,477	10	776	460 A A
*265/30R19	93W	XL	BSW	265029839	226856	9.0 - 10.0	9.5	10.7	25.3	1,433	10	818	460 A A
275/30R19	96W	XL	BSW	265029840	226857	9.0 - 11.0	9.5	10.9	25.6	1,565	10	808	460 A A
285/35ZR19	99W	SL	BSW	265029835	226852	9.5 - 11.0	10.0	11.4	26.9	1,709	10	771	460 A A
245/35ZR20	95W	XL	BSW	265029836	226853	8.0 - 9.5	8.5	9.8	26.8	1,521	10	774	460 A A
245/40ZR20	99W	XL	BSW	265029828	226845	8.0 - 9.5	8.5	9.8	27.7	1,709	10	749	460 A A
255/35R20	97W	XL	BSW	265029837	226854	8.5 - 10.0	9.0	10.2	27.0	1,609	10	767	460 A A
265/35ZR22	102W	XL	BSW	265029838	226855	9.0 - 10.5	10.0	10.7	29.3	1,874	10	705	460 A A

*Discontinued 2016.

Do not attempt to mount 16" rim diameter tires on 16.5" rim diameter wheels; this may result in serious injury or death.



SPORT MAXX RACE™

Exceptional Grip and Braking Performance on the Racetrack or the Highway



FEATURES

Hybrid Aramid overlay

Asymmetric pattern design

Motorsport-derived tread compound

High angle ribs

BENEFITS

Helps enhance steering and handling stability

Helps deliver excellent handling on dry pavement

Helps provide exceptional grip

Help improve grip while cornering



Dry Traction



Cornering
Stability



Steering
Responsiveness



Original Equipment on Mercedes-Benz and Porsche

SPORT MAXX RACE SPECIFICATIONS

SIZE	SERVICE DESCRIPTION	LOAD RANGE	SIDEWALL	PRODUCT CODE	MATERIAL NUMBER	APPROVED RIM WIDTH (INS)	MEASURING RIM WIDTH (INS)	SECTION WIDTH (INS)	OVERALL DIAMETER (INS)	MAX LOAD (LBS)	TREAD DEPTH (IN 32NDS)	REVS/MILE	UTQG	ORIGINAL EQUIPMENT FITMENT
235/35ZR19	91Y	XL	BLT	265029002	224381	8.0 - 9.5	8.5	9.5	25.5	1,356	8	820	80 AA A	
245/35ZR19	93Y	XL	BLT	265029003	224382	8.0 - 9.5	8.5	9.8	25.8	1,433	7	810	80 AA A	
255/35ZR19	96Y	XL	BLT	265029000	223063	8.5 - 10.0	9.0	10.2	26.0	1,565	7	803	80 A A	Mercedes-Benz C36 Black Series (F)
265/35ZR19	98Y	XL	BLT	265029004	224383	9.0 - 10.5	9.5	10.7	26.3	1,653	8	793	80 AA A	
265/35ZR19	98Y	XL	BLT	265029010	227049	9.0 - 10.5	9.5	10.7	26.3	1,653	7	794	80 AA A	Mercedes-Benz SLS AMG GT (F)
285/30ZR19	98Y	XL	BLT	265029001	223064	9.5 - 11.0	10.0	11.4	25.8	1,653	7	810	80 A A	Mercedes-Benz C36 Black Series (R)
305/30ZR19	102Y	XL	BLT	265029005	224384	10.5 - 12.0	11.0	12.3	26.3	1,874	7	796	80 AA A	
325/30ZR19	101Y	SL	BLT	265029006	224385	11.0 - 12.0	11.5	13.0	26.7	1,819	7	782	80 AA A	
245/35ZR20	91Y	SL	BLT	265029007	226652	8.0 - 9.5	8.5	9.8	26.8	1,356	8	781	80 AA A	Porsche 911 GT3 (F), Porsche 981 GT4 (F)
265/35ZR20	99Y	XL	BLT	265029012	230807	9.0 - 10.5	9.5	10.7	27.3	1,709	7	765	80 AA A	Porsche 991 GT3 RS (F)
295/30ZR20	101Y	XL	BLT	265029009	227048	10.0 - 11.0	10.5	11.9	27.0	1,819	7	774	80 AA A	Mercedes-Benz SLS AMG GT (R)
295/30ZR20	101Y	XL	BLT	265029011	230806	10.0 - 11.0	10.5	11.9	27.0	1,819	7	774	80 AA A	Porsche 981 GT4 (R)
305/30ZR20	103Y	XL	BLT	265029008	226653	10.5 - 11.5	11.0	12.3	27.2	1,929	7	767	80 AA A	Porsche 911 GT3 (R)
325/30ZR21	108Y	XL	BLT	265029013	230808	11.0 - 12.5	11.5	13.0	28.7	2,205	7	728	80 AA A	Porsche 991 GT3 RS (R)



SPORT MAXX RT2

A Champion in Grip and Steering Precision

FEATURES	BENEFITS
Specific Bead Seat System	Strengthens the link between tyre and rim for a more precise driving experience
Jointless Belt	Reduces circumferential deformations at high speeds
Max Flange Shield	Firm rubber guard that extends beyond the rim and wraps around the lower sidewall of the tyre to help protect rims from accidental curb damage
Multi Radius Tread	Significantly better control over the evolution of the footprint in all driving conditions; responsive wet and dry handling; increased cornering control
Asymmetric Tread Design	Improved performance on straight lines and around corners; increased resistance to aquaplaning
Flatter Tread Profile	Increased stability and steering precision; reduced heel and toe wear; excellent cornering stability and precision; superior dry grip
Power Braking Blocks	Shorter braking distances, especially at high speeds

SPORT MAXX RT2 SPECIFICATIONS

SIZE	SERVICE DESCRIPTION	LOAD RANGE	SIDEWALL	PRODUCT CODE	MATERIAL NUMBER	APPROVED RIM WIDTH (INS)	MEASURING RIM WIDTH (INS)	SECTION WIDTH (INS)	OVERALL DIAMETER (INS)	MAX LOAD (LBS)	TREAD DEPTH (IN 32NDS)	REVS/MILE	UTQG	ORIGINAL EQUIPMENT FITMENT
225/45R17	94W	XL	BLT	265008003	231823	7.0 - 8.5	7.5	8.9	25.0	1,477	9	836	240 AA A	Mini Clubman: 17
255/45R20	105Y	XL	BLT	265008004	233021	8.0 - 9.5	8.5	10.0	29.1	2,039	9	719	300 AA A	
285/40R20	108Y	XL	BLT	265008005	233031	9.5 - 11.0	10.0	11.4	28.9	2,205	9	721	300 AA A	
SPORT MAXX RT2 R0F														
225/45R19	92W	SL	BLT	265008002	230780	7.0 - 8.5	7.5	8.9	27	1,389	10	774	240 AA A	BMW 5 Series: 16



Original Equipment on BMW and Mini



SP SPORT MAXX® 050

(Select sizes with DSST® CTT†)

High-Performance, Run-Flat Summer Tires

FEATURES

High-performance tread design for summer use

Hybrid Kevlar®-Nylon Band*

Reinforced side layer*

Dimpled sidewall*

BENEFITS

Supports maximum handling and performance in warm, dry conditions

Helps maintain tire's structure to balance high-speed performance, comfort and noise

Temporarily supports the vehicle's weight when air pressure is lost

Helps limit temperature increases in the sidewall when the tire is driven while flat

SP SPORT MAXX 050 SPECIFICATIONS

SIZE	SERVICE DESCRIPTION	LOAD RANGE	SIDEWALL	PRODUCT CODE	MATERIAL NUMBER	APPROVED RIM WIDTH (INS)	MEASURING RIM WIDTH (INS)	SECTION WIDTH (INS)	OVERALL DIAMETER (INS)	MAX LOAD (LBS)	TREAD DEPTH (IN 32NDS)	REVS/ MILE	UTQG	ORIGINAL EQUIPMENT FITMENT
225/50R17	94W	SL	BSW	265023815	222293	6.0 - 8.0	7.0	9.2	25.9	1,477	10	807	280 A A	Lexus GS: 12-17
225/40R18	88Y	SL	BSW	265023831	225603	7.5 - 9.0	8.0	9.1	25.1	1,235	9	833	280 A A	Lexus LS: 14-17 (F)
235/45R18	94Y	SL	BSW	265023816	222294	7.5 - 9.0	8.0	9.3	26.3	1,477	10	794	280 A A	Lexus GS: 12-17, Lexus RC: 15-17
255/35R18	90Y	SL	BSW	265023832	225604	8.5 - 10.0	9.0	10.2	25.0	1,323	9	836	280 A A	Lexus LS: 14-17 (R)
235/40R19	96Y	XL	BSW	265023817	222295	8.0 - 9.5	8.5	9.5	26.4	1,565	10	791	280 A A	Lexus GS: 12-17 (F), Lexus RC: 15-17
245/45R19	98Y	SL	BSW	265023826	224641	7.5 - 9.0	8.0	9.6	27.7	1,653	10	755	280 A A	Lexus LS: 13-16, Lexus LS Hybrid: 17
265/35R19	94Y	SL	BSW	265023818	222296	9.0 - 10.5	9.5	10.7	26.3	1,477	9	793	280 A A	Lexus GS: 12-17 (R), Lexus RC: 15-17
SP SPORT MAXX 050 DSST CTT														
245/40RF19	94W	SL	BLT	265023827	225410	8.0 - 9.5	8.5	9.8	26.7	1,477	10	782	260 A A	Infiniti Q50: 14-17
245/45RF19	98Y	SL	BLT	265023835	231721	7.5 - 9.0	8.0	9.6	27.7	1,653	9	755	280 A A	Lexus LS Hybrid: 17
SP SPORT MAXX 050 DSST NRT (Noise Reduction Technology)														
245/40RF19	94W	SL	BSW	265031601	231886	8.0 - 9.5	8.5	9.8	26.7	1,477	10	783	260 A A	Infiniti Q50: 17 (L)
245/40RF19	94W	SL	BLT	265023836	231936	8.0 - 9.5	8.5	9.8	26.7	1,477	10	783	260 A A	
265/35RF19	94W	SL	BSW	265031602	231887	9.0 - 10.5	9.5	10.7	26.3	1,477	10	794	260 A A	Infiniti Q50: 17 (R)



Dry Traction



Ultra Wet Traction



Cornering Stability



Steering Responsiveness



Rugged Toughness from DuPont™ Kevlar®



Original Equipment on Infiniti and Lexus

† Refer to the run-flat owner's manual/limited warranty recommendations on operation at low or no air pressure. Tire pressure monitoring system required. Sold separately.

*Only on SP Sport Maxx 050 DSST CTT.

DuPont™ and Kevlar® are trademarks or registered trademarks of E.I. du Pont de Nemours and Company.



SP SPORT MAXX® A SP SPORT MAXX® A1 SP SPORT MAXX® 101

Luxury Sport Tire With Commanding Power



SP SPORT MAXX A

SP SPORT MAXX A1

SP SPORT MAXX 101

FEATURES

Multi-Radius Tread Technology™

Integral Rubber Matrix tread comprised of an optimized blend of silica and high-structured carbon black

Multi-Pitch Tread Design Technology™

Jointless Band Technology™

Max Flange Shield®

BENEFITS

Helps deliver superb dry handling while maintaining wet handling

Demonstrates excellent acceleration and braking performance

Helps reduce noise for a quiet ride

Helps maintain the tire's shape and enables smooth performance at highway speeds

Helps protect rims from accidental curb damage



Ultra Wet
Traction



Dry Traction



Comfortable,
Refined Handling



Original Equipment on Lexus

SP SPORT MAXX A SPECIFICATIONS

SIZE	SERVICE DESCRIPTION	LOAD RANGE	SIDEWALL	PRODUCT CODE	MATERIAL NUMBER	APPROVED RIM WIDTH (INS)	MEASURING RIM WIDTH (INS)	SECTION WIDTH (INS)	OVERALL DIAMETER (INS)	MAX LOAD (LBS)	TREAD DEPTH (IN 32NDS)	REVS/ MILE	UTQG	ORIGINAL EQUIPMENT FITMENT
245/45R17	95W	SL	BSW	265023847	198849	7.5 - 9.0	8.0	9.6	25.7	1,521	10	814	240 A A	Lexus LS: 06-16 (R)
225/40R18	88Y	SL	BSW	265023772	198882	7.5 - 9.0	8.0	9.1	25.1	1,235	10	833	240 A A	Lexus LS: 06-13 (F)
255/40R18	95Y	SL	BSW	265023773	198883	8.5 - 10.0	9.0	10.2	26.0	1,521	10	803	240 A A	Lexus LS: 06-13 (R)

SP SPORT MAXX A1 SPECIFICATIONS

SIZE	SERVICE DESCRIPTION	LOAD RANGE	SIDEWALL	PRODUCT CODE	MATERIAL NUMBER	APPROVED RIM WIDTH (INS)	MEASURING RIM WIDTH (INS)	SECTION WIDTH (INS)	OVERALL DIAMETER (INS)	MAX LOAD (LBS)	TREAD DEPTH (IN 32NDS)	REVS/ MILE	UTQG	ORIGINAL EQUIPMENT FITMENT
235/50R18	97W	XL	BSW	265040450	202196	6.5 - 8.5	7.5	9.7	27.3	1,609	10	766	280 A A	Lexus LS: 06-16, Lexus LS Hybrid: 17

SP SPORT MAXX 101 SPECIFICATIONS

SIZE	SERVICE DESCRIPTION	LOAD RANGE	SIDEWALL	PRODUCT CODE	MATERIAL NUMBER	APPROVED RIM WIDTH (INS)	MEASURING RIM WIDTH (INS)	SECTION WIDTH (INS)	OVERALL DIAMETER (INS)	MAX LOAD (LBS)	TREAD DEPTH (IN 32NDS)	REVS/ MILE	UTQG	ORIGINAL EQUIPMENT FITMENT
245/45R19	98Y	SL	BSW	265040645	202198	7.5 - 9.0	8.0	9.6	27.7	1,653	10	755	280 A A	Lexus LS: 07-11



SP SPORT 2030

SP SPORT 2050

SP SPORT® 2030 SP SPORT® 2050

High-Performance Summer Tires

FEATURES

Wide circumferential grooves with nearly vertical walls

Triple tread radius

Jointless Band Technology™

Fine-tuned groove depth and construction

BENEFITS

Help maintain wet handling and traction throughout the life of the tire

Increased contact patch area during cornering for enhanced traction and control

Helps maintain the tire's shape and enables smooth performance at highway speeds

Smooth, luxurious ride

SP SPORT 2030 SPECIFICATIONS

SIZE	SERVICE DESCRIPTION	LOAD RANGE	SIDEWALL	PRODUCT CODE	MATERIAL NUMBER	APPROVED RIM WIDTH (INS)	MEASURING RIM WIDTH (INS)	SECTION WIDTH (INS)	OVERALL DIAMETER (INS)	MAX LOAD (LBS)	TREAD DEPTH (IN 32NDS)	REVS/MILE	UTQG	ORIGINAL EQUIPMENT FITMENT
245/40R18	93Y	SL	BSW	265039841	196532	8.0 - 9.5	8.5	9.8	25.7	1,433	10	813	360 A A	Lexus GS: 06-11, Lexus SC: 06-10

SP SPORT 2050 SPECIFICATIONS

SIZE	SERVICE DESCRIPTION	LOAD RANGE	SIDEWALL	PRODUCT CODE	MATERIAL NUMBER	APPROVED RIM WIDTH (INS)	MEASURING RIM WIDTH (INS)	SECTION WIDTH (INS)	OVERALL DIAMETER (INS)	MAX LOAD (LBS)	TREAD DEPTH (IN 32NDS)	REVS/MILE	UTQG	ORIGINAL EQUIPMENT FITMENT
225/50R17	94W	SL	BSW	265024050	196520	6.0 - 8.0	7.0	9.2	25.9	1,477	10	807	360 A A	Lexus GS: 06-11
P225/40R18	88Y	SL	BSW	265024051	214907	7.5 - 9.0	8.0	9.1	25.1	1,232	10	833	240 A A	Mazda MAZDA3: 10-13
225/40R18	88Y	SL	BSW	265024052	215641	7.5 - 9.0	8.0	9.1	25.1	1,235	10	834	240 A A	Lexus LS: 10-16 (F)
225/45R18	91W	SL	BSW	265024049	207971	7.0 - 8.5	7.5	8.9	25.9	1,356	10	807	240 A A	Mazda RX-8: 08-11
255/40R18	95Y	SL	BSW	265024053	215642	8.5 - 10.0	9.0	10.2	26.0	1,521	10	803	240 A A	Lexus LS: 10-16 (R)



Ultra Wet Traction



Dry Traction



Steering Responsiveness



Original Equipment on Lexus and Mazda



SP SPORT 600

SP SPORT MAXX GT 600 DSST

SP SPORT® 600 SP SPORT MAXX® GT 600 DSST®†

High Performance With Wet and Dry Traction

FEATURES	BENEFITS
Asymmetric tread	Helps provide a balance of wet and dry performance
Solid center rib	Helps enhance steering response and driver feedback
Circumferential and lateral-sweeping grooves	Help provide efficient water evacuation for enhanced traction
Jointless Band Technology™	Helps maintain the tire's shape and enables smooth performance at highway speeds
Multi-Pitch Tread Design Technology™	Helps reduce noise for a quiet ride
Dunlop® Self-Supporting Technology (DSST)**	Sidewall construction to help allow continued driving on a flat tire for up to 50 miles at 50 mph in normal conditions

SP SPORT 600 SPECIFICATIONS

SIZE	SERVICE DESCRIPTION	LOAD RANGE	SIDEWALL	PRODUCT CODE	MATERIAL NUMBER	APPROVED RIM WIDTH (INS)	MEASURING RIM WIDTH (INS)	SECTION WIDTH (INS)	OVERALL DIAMETER (INS)	MAX LOAD (LBS)	TREAD DEPTH (IN 32NDS)	REVS/ MILE	UTQG	ORIGINAL EQUIPMENT FITMENT
245/40R18	93W	SL	BSW	265023601	206343	8.0 - 9.5	8.5	9.8	25.7	1,433	10	813	200 A A	Subaru Impreza: 08-15

SP SPORT MAXX GT 600 DSST SPECIFICATIONS

SIZE	SERVICE DESCRIPTION	LOAD RANGE	SIDEWALL	PRODUCT CODE	MATERIAL NUMBER	APPROVED RIM WIDTH (INS)	MEASURING RIM WIDTH (INS)	SECTION WIDTH (INS)	OVERALL DIAMETER (INS)	MAX LOAD (LBS)	TREAD DEPTH (IN 32NDS)	REVS/ MILE	UTQG	ORIGINAL EQUIPMENT FITMENT
*255/40ZRF20	97(Y)	SL	BSW	265028802	224882	8.5 - 10.0	9.0	10.2	28.0	1,609	8	746	200 A A	Nissan GT-R: 11-16
255/40ZRF20	97Y	SL	BSW	265028803	226983	8.5 - 10.0	9.0	10.2	28.0	1,609	8	746	200 A A	Nissan GT-R: 16 -17
255/40ZRF20	97Y	SL	BSW	265028805	227270	8.5 - 10.0	9.0	10.2	28.0	1,609	6	746	200 A A	Nissan GT-R Nismo: 16-17 (F)
285/35ZRF20	100Y	SL	BSW	265028804	226984	9.5 - 11.0	10.0	11.4	27.9	1,764	8	749	200 A A	Nissan GT-R: 11-17
285/35ZRF20	100Y	SL	BSW	265028806	227421	9.5 - 11.0	10.0	11.4	27.9	1,764	7	749	200 A A	Nissan GT-R Nismo: 16-17 (R)

*Discontinued 2016.



Dry Traction



Ultra Wet Traction



Steering Responsiveness



Original Equipment on Nissan and Subaru

† Refer to the run-flat owner's manual/limited warranty recommendations on operation at low or no air pressure. Tire pressure monitoring system required. Sold separately.

* Only on the SP Sport Maxx GT 600 DSST.



SPORT BLURESPONSE™

All Grip. No Compromise.

FEATURES

Specific Bead Seat System

Jointless Belt

Max Flange Shield

Multi Radius Tread

Asymmetric Tread Design

Flatter Tread Profile

BENEFITS

Strengthens the link between tyre and rim for a more precise driving experience

Reduces circumferential deformations at high speeds

Firm rubber guard that extends beyond the rim and wraps around the lower sidewall of the tyre to help protect rims from accidental curb damage

Significantly better control over the evolution of the footprint in all driving conditions; responsive wet and dry handling; increased cornering control

Improved performance on straight lines and around corners; increased resistance to aquaplaning

Increased stability and steering precision; reduced heel and toe wear; excellent cornering stability and precision; superior dry grip

SPORT BLURESPONSE SPECIFICATIONS

SIZE	SERVICE DESCRIPTION	LOAD RANGE	SIDEWALL	PRODUCT CODE	MATERIAL NUMBER	APPROVED RIM WIDTH (INS)	MEASURING RIM WIDTH (INS)	SECTION WIDTH (INS)	OVERALL DIAMETER (INS)	MAX LOAD (LBS)	TREAD DEPTH (IN 32NDS)	REVS/MILE	UTQG	ORIGINAL EQUIPMENT FITMENT
175/65R15	84H	SL	BLT	265040300	227383	5.0 - 6.0	5.0	7.0	24.0	1,102	10	872	340 A A	Mini Cooper S: 16-17
205/55R17	95Y	XL	BLT	265040301	230363	5.5 - 7.5	6.5	25.9	25.9	1,521	10	807	340 A A	



Original Equipment on Mini

SP SPORT® FAST RESPONSE™

Superb Road Feedback for Responsive Handling on Wet and Dry Roads



FEATURES	BENEFITS
Specific Bead Seat System	Strengthens the link between tyre and rim for a more precise driving experience
Jointless Belt	Reduces circumferential deformations at high speeds
Max Flange Shield	Firm rubber guard that extends beyond the rim and wraps around the lower sidewall of the tyre to help protect rims from accidental curb damage
Multi Radius Tread	Significantly better control over the evolution of the footprint in all driving conditions; responsive wet and dry handling; increased cornering control
Asymmetric Tread Design	Improved performance on straight lines and around corners; increased resistance to aquaplaning
Flatter Tread Profile	Increased stability and steering precision; reduced heel and toe wear; excellent cornering stability and precision; superior dry grip

SP SPORT FAST RESPONSE SPECIFICATIONS

SIZE	SERVICE DESCRIPTION	LOAD RANGE	SIDEWALL	PRODUCT CODE	MATERIAL NUMBER	APPROVED RIM WIDTH (INS)	MEASURING RIM WIDTH (INS)	SECTION WIDTH (INS)	OVERALL DIAMETER (INS)	MAX LOAD (LBS)	TREAD DEPTH (IN 32NDS)	REVS/ MILE	UTQG	ORIGINAL EQUIPMENT FITMENT
205/55R17	91V	SL	BLT	265029500	225140	5.5 - 7.5	6.5	25.9	25.9	1,356	10	807	280 A A	Mini Paceman: 16-17



Original Equipment on Mini



SP QUATTRO MAXX

Sport Car Precision and Driving Pleasure
for High Performance SUVs

FEATURES

Apex containing Kevlar® fibre

Dual tread compound

Ultra-stiff breakers

BENEFITS

Enhanced steering response when accelerating and braking, together with increased stability when cornering

Ultimate dry grip and excellent wet handling and braking

Improved road feedback and heavy handling performance

SP QUATTRO MAXX SPECIFICATIONS

SIZE	SERVICE DESCRIPTION	LOAD RANGE	SIDEWALL	PRODUCT CODE	MATERIAL NUMBER	APPROVED RIM WIDTH (INS)	MEASURING RIM WIDTH (INS)	SECTION WIDTH (INS)	OVERALL DIAMETER (INS)	MAX LOAD (LBS)	TREAD DEPTH (IN 32NDS)	REVS/ MILE	UTQG	ORIGINAL EQUIPMENT FITMENT
255/35R20	97Y	XL	BLT	265041000	230450	8.5 - 10.0	9.0	10.2	27.0	1,609	10	774	240 AA A	Audi A3: 16



Original Equipment on Audi



SP SPORT® 01

(Select sizes with DSST® ROF†)

Quiet, High-Performance Tires



FEATURES

Jointless Band Technology™

Aramid-reinforced bead

Max Flange Shield®

Silica tread

Dunlop® Self-Supporting Technology (DSST)†*

BENEFITS

Helps maintain the tire's shape and enables smooth performance at highway speeds

Helps provide lower sidewall stiffness for enhanced responsiveness

Helps protect rims from accidental curb damage

Enhances dry and wet traction while helping to reduce rolling resistance

Sidewall construction to help allow continued driving on a flat tire for up to 50 miles at 50 mph in normal conditions



Dry Traction



Ultra Wet Traction



Steering Responsiveness



Original Equipment on Audi, BMW, Infiniti, Jaguar, Mini and Subaru

† Refer to the run-flat owner's manual/limited warranty recommendations on operation at low or no air pressure. Tire pressure monitoring system required. Sold separately.

* Only on SP Sport 01 DSST ROF.

SP SPORT 01 SPECIFICATIONS

SIZE	SERVICE DESCRIPTION	LOAD RANGE	SIDEWALL	PRODUCT CODE	MATERIAL NUMBER	APPROVED RIM WIDTH (INS)	MEASURING RIM WIDTH (INS)	SECTION WIDTH (INS)	OVERALL DIAMETER (INS)	MAX LOAD (LBS)	TREAD DEPTH (IN 32NDS)	REVS/MILE	UTQG	ORIGINAL EQUIPMENT FITMENT
225/45R17	91W	SL	BSW	265022461	208554	7.0 - 8.5	7.5	8.9	25.0	1,356	10	836	280 A A	Subaru Impreza: 09-10
225/50R17	94Y	SL	BLT	265022345	214426	6.0 - 8.0	7.0	9.2	25.9	1,477	10	807	280 A A	Audi A4: 09-15
235/45R17	94W	SL	BSW	265023344	206173	7.5 - 9.0	8.0	9.3	25.4	1,477	10	823	280 A A	Subaru Impreza: 08-15
245/40ZR19	94Y	SL	BSW	265022337	201434	8.0 - 9.5	8.5	9.8	26.7	1,477	10	782	280 A A	Jaguar XK: 07-10 (F)
275/35ZR19	96Y	SL	BSW	265022344	201435	9.0 - 11.0	9.5	10.9	26.6	1,565	10	786	280 A A	Jaguar XK: 07-10 (R)
265/45R21	104W	SL	BSW	265022321	207787	8.5 - 10.0	9.0	10.5	30.4	1,984	10	688	280 A A	Infiniti FX45: 08-14
SP SPORT 01 DSST R0F														
195/55R16	87H	SL	BSW	265025656	203101	5.5 - 7.0	6.0	7.9	24.4	1,201	10	856	280 A A	Mini Cooper S: 07-10
195/55R16	87V	SL	BSW	265025456	203102	5.5 - 7.0	6.0	7.9	24.4	1,201	10	857	280 A A	Mini Cooper S: 07-10
205/45R17	84W	SL	BSW	265023145	203104	6.5 - 7.5	7.0	8.1	24.3	1,102	10	862	280 A A	Mini Cooper S: 07-13, 16-17
215/40R18	85Y	SL	BLT	265025660	209778	7.0 - 8.5	7.5	8.6	24.8	1,135	10	844	280 A A	BMW 1 Series: 08-13 (F)
245/35R18	88Y	SL	BLT	265025654	209526	8.0 - 9.5	8.5	9.8	24.8	1,235	10	844	280 A A	BMW 1 Series: 08-13 (R)
245/40R18	93Y	SL	BSW	265023142	202231	8.0 - 9.5	8.5	9.8	25.7	1,430	9	813	280 A A	BMW 5 Series/6 Series: 07-10
*255/55R18	109V	SL	BLT	265025455	201065	7.0 - 9.0	8.0	10.4	29.0	2,271	9	720	280 A A	BMW X5: 07-13, BMW X6: 07-09
275/35R18	95Y	SL	BSW	265023138	202233	9.0 - 11.0	9.5	10.8	25.6	1,521	10	818	280 A A	BMW 5 Series/6 Series: 07-10 (R)
245/35R19	93Y	XL	BLT	265025658	209676	8.0 - 9.5	8.5	9.8	25.8	1,433	10	810	280 A A	BMW 5 Series/6 Series: 09-10

*Discontinued 2016.

Do not attempt to mount 16" rim diameter tires on 16.5" rim diameter wheels; this may result in serious injury or death.



SP SPORT® 01 A SP SPORT® 01 A/S

(Select sizes with ROF†)

Quiet, High-Performance Tires



FEATURES

Jointless Band Technology™

Aramid-reinforced bead

Max Flange Shield®

Silica tread

Dunlop® Self-Supporting Technology (DSST)†*

BENEFITS

Helps maintain the tire's shape and enables smooth performance at highway speeds

Helps provide lower sidewall stiffness for enhanced responsiveness

Helps protect rims from accidental curb damage

Enhances dry and wet traction while helping to reduce rolling resistance

Sidewall construction to help allow continued driving on a flat tire for up to 50 miles at 50 mph in normal conditions



All-Season



Dry Traction



Ultra Wet
Traction



Steering
Responsiveness



Original Equipment on Audi, BMW and Volkswagen

† Refer to the run-flat owner's manual/limited warranty recommendations on operation at low or no air pressure. Tire pressure monitoring system required. Sold separately.

* Only on SP Sport 01 A DSST ROF and SP Sport 01 A/S DSST ROF.

‡ Only on SP Sport 01 A/S and SP Sport 01 A/S DSST ROF.

SP SPORT 01 A SPECIFICATIONS

SIZE	SERVICE DESCRIPTION	LOAD RANGE	SIDEWALL	PRODUCT CODE	MATERIAL NUMBER	APPROVED RIM WIDTH (INS)	MEASURING RIM WIDTH (INS)	SECTION WIDTH (INS)	OVERALL DIAMETER (INS)	MAX LOAD (LBS)	TREAD DEPTH (IN 32NDS)	REVS/ MILE	UTQG	ORIGINAL EQUIPMENT FITMENT
245/45ZR19	98Y	SL	BLT	265020200	188121	7.5 - 9.0	8.0	9.6	27.7	1,653	10	755	280 A A	BMW 7 Series: 04-06 (F)
*275/40ZR19	101Y	SL	BSW	265020245	188122	9.0 - 11.0	9.5	10.9	27.7	1,819	10	755	280 A A	BMW 7 Series: 04-06 (R)
SP SPORT 01 A DSST ROF														
225/45R17	91V	SL	BLT	265027800	215067	7.0 - 8.5	7.5	8.9	25.0	1,356	10	836	280 A A	BMW 3 Series: 10
225/45R17	91W	SL	BLT	265027801	215068	7.0 - 8.5	7.5	8.9	25.0	1,356	10	836	280 A A	BMW 3 Series: 10

SP SPORT 01 A/S SPECIFICATIONS

SIZE	SERVICE DESCRIPTION	LOAD RANGE	SIDEWALL	PRODUCT CODE	MATERIAL NUMBER	APPROVED RIM WIDTH (INS)	MEASURING RIM WIDTH (INS)	SECTION WIDTH (INS)	OVERALL DIAMETER (INS)	MAX LOAD (LBS)	TREAD DEPTH (IN 32NDS)	REVS/ MILE	UTQG	ORIGINAL EQUIPMENT FITMENT
225/40R18	92H	XL	BLT	265026240	202749	7.5 - 9.0	8.0	9.1	25.1	1,389	10	833	220 A B	Volkswagen GTI: 07-15, Volkswagen R32: 07-13
SP SPORT 01 A/S DSST ROF														
*245/40R18	93H	SL	BLT	265026640	203994	8.0 - 9.5	8.5	9.8	25.7	1,433	10	813	220 A B	Audi TT: 07-15

*Discontinued 2016.



SIGNATURE HP

Bold Style Meets Experienced Handling for All-Season Performance



FEATURES

Asymmetric tread design

Circumferential grooves

Innovative blade pattern

Contoured edges

Rim guard

Jointless Band Technology™

BENEFITS

Offers superior all-season handling for wet or dry roads

Help channel water, slush and snow away from the tread for enhanced traction

Offers long-lasting traction and enhances turning in snow and on ice

Reduce noise and enhance tread life

Helps protect wheels from accidental curb damage

Helps maintain the tire's shape and enables smooth performance at highway speeds



All-Season



Dry Traction



Ultra Wet
Traction



Steering
Responsiveness



Cornering
Stability

ALL-SEASON SPORT/TOURING

PERFORMANCE

SIGNATURE HP SPECIFICATIONS

SIZE	SERVICE DESCRIPTION	LOAD RANGE	SIDEWALL	PRODUCT CODE	MATERIAL NUMBER	APPROVED RIM WIDTH (INS)	MEASURING RIM WIDTH (INS)	SECTION WIDTH (INS)	OVERALL DIAMETER (INS)	MAX LOAD (LBS)	TREAD DEPTH (IN 32NDS)	REVS/ MILE	UTQG
205/55R16	91V	SL	BSW	264004915	223793	5.5 - 7.5	6.5	8.4	24.9	1,356	10	839	500 AA A
205/60R16	92V	SL	BSW	264004916	223794	5.5 - 7.5	6.0	8.2	25.7	1,389	10	813	500 AA A
205/50R17	93V	XL	BSW	264004900	219301	5.5 - 7.5	6.5	8.4	25.1	1,433	10	833	500 AA A
215/45R17	91W	XL	BSW	264004901	219302	7.0 - 8.0	7.0	8.4	24.7	1,356	10	848	500 AA A
225/45R17	94W	XL	BSW	264004902	219305	7.0 - 8.5	7.5	8.9	25.0	1,477	10	836	500 AA A
225/50R17	94W	SL	BSW	264004904	219307	6.0 - 8.0	7.0	9.2	25.9	1,477	10	807	500 AA A
225/55R17	97V	SL	BSW	264004917	223797	6.0 - 8.0	7.0	9.2	26.8	1,609	10	780	500 AA A
235/45R17	94W	SL	BSW	264004905	219311	7.5 - 9.0	8.0	9.3	25.4	1,477	10	823	500 AA A
235/50R17	96V	SL	BSW	264004919	223799	6.5 - 8.5	7.5	9.7	26.3	1,565	10	795	500 AA A
235/55R17	99W	SL	BSW	264004920	223800	6.5 - 8.5	7.5	9.7	27.2	1,709	10	768	500 AA A
245/40R17	91W	SL	BSW	264004921	223941	8.0 - 9.5	8.5	9.8	24.7	1,356	10	846	500 AA A
245/45R17	95W	SL	BSW	264004912	222523	7.5 - 9.0	8.0	9.6	25.7	1,521	10	813	500 AA A
215/45R18	93W	XL	BSW	264004914	222525	7.0 - 8.0	7.0	8.4	25.6	1,433	10	816	500 AA A
225/40R18	92W	XL	BSW	264004911	222522	7.5 - 9.0	8.0	9.1	25.1	1,389	10	833	500 AA A
225/45R18	95W	XL	BSW	264004903	219306	7.0 - 8.5	7.5	8.9	25.9	1,521	10	807	500 AA A
225/50R18	95W	SL	BSW	264004925	223945	6.0 - 8.0	7.0	9.2	26.9	1,521	10	777	500 AA A
225/60R18	100V	SL	BSW	264004910	222521	6.0 - 8.0	6.5	9.0	28.6	1,764	10	731	500 AA A
235/40R18	95W	XL	BSW	264004918	223798	8.0 - 9.5	8.5	9.5	25.4	1,521	10	823	500 AA A
235/45R18	94V	SL	BSW	264004906	219312	7.5 - 9.0	8.0	9.3	26.3	1,477	10	795	500 AA A
235/50R18	97W	SL	BSW	264004907	219313	6.5 - 8.5	7.5	9.7	27.3	1,609	10	766	500 AA A
245/40R18	93W	SL	BSW	264004922	223942	8.0 - 9.5	8.5	9.8	25.7	1,433	10	813	500 AA A
*245/45R18	96W	SL	BSW	264004909	219317	7.5 - 9.0	8.0	9.6	26.7	1,565	10	783	500 AA A
255/35R18	94W	XL	BSW	264004928	224959	8.5 - 10.0	9.0	10.2	25.0	1,477	10	836	500 AA A
255/40R18	99W	XL	BSW	264004924	223944	8.5 - 10.0	9.0	10.2	26.0	1,709	10	804	500 AA A
255/45R18	99W	SL	BSW	264004927	223947	8.0 - 9.5	8.5	10.0	27.0	1,709	10	774	500 AA A
255/55R18	109V	XL	BSW	264004929	226971	7.0 - 9.0	8.0	10.4	29.0	2,271	10	29	500 AA A
245/40R19	94W	SL	BSW	264004908	219316	8.0 - 9.5	8.5	9.8	26.7	1,477	10	783	500 AA A
245/45R19	98W	SL	BSW	264004926	223946	7.5 - 9.0	8.0	9.6	27.7	1,653	10	755	500 AA A
255/35R19	96W	XL	BSW	264004923	223943	8.5 - 10.0	9.0	10.2	26.0	1,565	10	803	500 AA A
255/50R19	107W	XL	BSW	264004913	222524	7.0 - 9.0	8.0	10.4	29.1	2,149	10	718	500 AA A

*Discontinued 2016.

Do not attempt to mount 16" rim diameter tires on 16.5" rim diameter wheels; this may result in serious injury or death.



SP SPORT MAXX A1 A/S

SP SPORT MAXX A1-A A/S

SP SPORT MAXX® A1 A/S SP SPORT MAXX® A1-A A/S

Luxury Sport Tire With Commanding Power

FEATURES

Multi-Radius Tread Technology™

Optimal Tread Pattern Technology

Integral Rubber Matrix tread comprised of an optimized blend of silica and high-structured carbon black

Multi-Pitch Tread Design Technology™

Jointless Band Technology™

Max Flange Shield®

BENEFITS

Helps deliver superb dry handling while maintaining wet handling

Enhances straight line stability and on-center steering feel

Demonstrates excellent acceleration and braking performance

Helps reduce noise for a quiet ride

Helps maintain the tire's shape and enables smooth performance at highway speeds

Helps protect rims from accidental curb damage

SP SPORT MAXX A1 A/S SPECIFICATIONS

SIZE	SERVICE DESCRIPTION	LOAD RANGE	SIDEWALL	PRODUCT CODE	MATERIAL NUMBER	APPROVED RIM WIDTH (INS)	MEASURING RIM WIDTH (INS)	SECTION WIDTH (INS)	OVERALL DIAMETER (INS)	MAX LOAD (LBS)	TREAD DEPTH (IN 32NDS)	REVS/ MILE	UTQG	ORIGINAL EQUIPMENT FITMENT
P235/50R18	97V	XL	BSW	265040550	202197	6.5 - 8.5	7.5	9.7	27.3	1,609	10	766	340 A A	Lexus LS: 07-16, Lexus LS Hybrid: 17
P245/45R19	98V	SL	BSW	265040745	204414	7.5 - 9.0	8.0	9.6	27.7	1,653	10	755	340 A A	Lexus LS: 07-16, Lexus LS Hybrid: 17

SP SPORT MAXX A1-A A/S SPECIFICATIONS

SIZE	SERVICE DESCRIPTION	LOAD RANGE	SIDEWALL	PRODUCT CODE	MATERIAL NUMBER	APPROVED RIM WIDTH (INS)	MEASURING RIM WIDTH (INS)	SECTION WIDTH (INS)	OVERALL DIAMETER (INS)	MAX LOAD (LBS)	TREAD DEPTH (IN 32NDS)	REVS/ MILE	UTQG	ORIGINAL EQUIPMENT FITMENT
P225/50R18	94V	SL	BSW	265040722	205093	6.0 - 8.0	7.0	9.2	26.9	1,477	10	777	260 A A	Infiniti G37 Convertible: 09-17 (F), Infiniti G37 Coupe: 09-17 (F), Infiniti G37: 08-13
P245/45R18	96V	SL	BSW	265040720	209525	7.5 - 9.0	8.0	9.6	26.7	1,565	10	784	260 A A	Infiniti G37 Convertible: 09-17 (R), Infiniti G37 Coupe: 09 (R)



All-Season



Comfortable,
Refined Handling



Original Equipment on Infiniti and Lexus

ALL-SEASON SPORT/TOURING

SP SPORT® 7010 A/S DSST®†

Ultra Performance With Wet and Dry Traction

PERFORMANCE



FEATURES

Asymmetric tread

M+S-rated, all-season tread design

Solid center rib

Circumferential and lateral-sweeping grooves

Jointless Band Technology™

Multi-Pitch Tread Design Technology™

Dunlop® Self-Supporting Technology (DSST)†

BENEFITS

Helps provide a balance of wet and dry performance

Helps deliver consistent all-season traction and wet handling

Helps enhance steering response and driver feedback

Help provide efficient water evacuation for enhanced traction

Helps maintain the tire's shape and enables smooth performance at highway speeds

Helps reduce noise for a quiet ride

Sidewall construction to help allow continued driving on a flat tire for up to 50 miles at 50 mph in normal conditions

SP SPORT 7010 A/S DSST SPECIFICATIONS

SIZE	SERVICE DESCRIPTION	LOAD RANGE	SIDEWALL	PRODUCT CODE	MATERIAL NUMBER	APPROVED RIM WIDTH (INS)	MEASURING RIM WIDTH (INS)	SECTION WIDTH (INS)	OVERALL DIAMETER (INS)	MAX LOAD (LBS)	TREAD DEPTH (IN 32NDS)	REVS/ MILE	UTQG	ORIGINAL EQUIPMENT FITMENT
255/40RF20	97W	SL	BSW	265039947	207790	8.5 - 10.0	9.0	10.2	28.0	1,609	10	746	240 A A	Nissan GT-R: 09-17 (F)
285/35RF20	100W	SL	BSW	265039946	207789	9.5 - 11.0	10.0	11.4	27.9	1,764	10	749	240 A A	Nissan GT-R: 09-17 (R)



All-Season



Cornering Stability



Steering Responsiveness



Original Equipment on Nissan

† Refer to the run-flat owner's manual/limited warranty recommendations on operation at low or no air pressure. Tire pressure monitoring system required. Sold separately.



SP SPORT 7000 A/S®

All-Season High Performance and a Smooth, Quiet Ride

FEATURES

Multi-Radius Tread Technology™

5-Pitch Technology™

Jointless Band Technology™

BENEFITS

Helps deliver superb dry handling while maintaining wet handling

Aids noise reduction for a quiet ride

Helps maintain the tire's shape and enables smooth performance at highway speeds

SP SPORT 7000 A/S SPECIFICATIONS

SIZE	SERVICE DESCRIPTION	LOAD RANGE	SIDEWALL	PRODUCT CODE	MATERIAL NUMBER	APPROVED RIM WIDTH (INS)	MEASURING RIM WIDTH (INS)	SECTION WIDTH (INS)	OVERALL DIAMETER (INS)	MAX LOAD (LBS)	TREAD DEPTH (IN 32NDS)	REVS/ MILE	UTQG	ORIGINAL EQUIPMENT FITMENT
185/55R16	83H	SL	BSW	265004140	208600	5.0 - 6.5	6.0	7.6	24.2	1,074	10	871	340 A A	Honda Access: 09, Honda Fit: 09-14
P195/55R16	86V	SL	BSW	265004155	217526	5.5 - 7.0	6.0	7.9	24.4	1,168	10	856	340 A A	Honda CR-Z: 11-17
P215/60R16	94H	SL	VSB	265004154	204025	6.0 - 7.5	6.5	8.7	26.1	1,477	10	800	340 A A	Honda Accord DX: 07-12
P215/60R16	94V	SL	BSW	265027902	215962	6.0 - 7.5	6.5	8.7	26.1	1,477	10	800	340 A A	Suzuki Kizashi: 10-13
P215/55R17	93V	SL	BSW	265027901	215961	6.0 - 7.5	7.0	8.9	26.3	1,433	10	795	340 A A	Suzuki Kizashi: 10-13
P225/55R18	97V	SL	BSW	265004178	206172	6.0 - 8.0	7.0	9.2	27.8	1,609	10	753	340 A A	Infiniti EX35: 11-17, Nissan Rogue: 10-13
*P235/45R18	94V	SL	BSW	265027900	215930	7.5 - 9.0	8.0	9.3	26.3	1,477	10	793	340 A A	Suzuki Kizashi: 10-13, Nissan Altima: 13-17
P235/45R18	94V	SL	BLT	265004179	223559	7.5 - 9.0	8.0	9.3	26.3	1,477	10	793	340 A A	
P235/50R19	99V	SL	VSB	265004190	207983	6.5 - 8.5	7.5	9.7	28.3	1,709	10	738	340 A A	Toyota Sienna: 11-17

*Discontinued 2016.

Do not attempt to mount 16" rim diameter tires on 16.5" rim diameter wheels; this may result in serious injury or death.



All-Season



Dry Traction



Ultra Wet Traction



Original Equipment on Honda, Infiniti, Nissan, Suzuki and Toyota

ALL-SEASON SPORT/TOURING

SP SPORT 4000® DSST® CTT[†]

High-Performance All-Season Tire

PERFORMANCE



FEATURES

Groove area optimized for traction on multiple surfaces

Rigid tread blocks for dry handling performance

Twin-shift noise reduction

Exclusive, high-performance, all-season tread

Circumferential rain groove tread design and placement

Dunlop® Self-Supporting Technology (DSST)[†]

Combined Tire Technology (CTT)

BENEFITS

All-season traction

Excellent steering and control during cornering

Quiet performance

Enhanced grip, control, energy absorption and treadwear in a range of driving conditions

All-season and wet traction capabilities

Sidewall construction to help allow continued driving on a flat tire for up to 50 miles at 50 mph in normal conditions

Less tire weight and rounder cavity shape help provide a softer ride

SP SPORT 4000 DSST CTT SPECIFICATIONS

SIZE	SERVICE DESCRIPTION	LOAD RANGE	SIDEWALL	PRODUCT CODE	MATERIAL NUMBER	APPROVED RIM WIDTH (INS)	MEASURING RIM WIDTH (INS)	SECTION WIDTH (INS)	OVERALL DIAMETER (INS)	MAX LOAD (LBS)	TREAD DEPTH (IN 32NDS)	REVS/ MILE	UTQG	ORIGINAL EQUIPMENT FITMENT
P225/60R17	98T	SL	BSW	265004379	201541	6.0 - 8.0	6.5	9.0	27.6	1,653	11	756	360 A B	Toyota Sienna: 06-10



All-Season



Dry Traction



Comfortable,
Refined Handling



Original Equipment on Toyota

[†] Refer to the run-flat owner's manual/limited warranty recommendations on operation at low or no air pressure. Tire pressure monitoring system required. Sold separately.



SP SPORT® 5000 SP SPORT® 5000M

(Select sizes with DSST® CTT†)

High-Performance All-Season Tires



TREAD PATTERN FOR
MATERIAL #193265 ONLY.†

FEATURES

- Innovative, asymmetrical tread design
- Full-width, twin-cut steel belts
- Exclusive, high-performance, all-season tread
- Max Flange Shield® (available in select sizes)
- Dunlop® Self-Supporting Technology (DSST)†*
- Combined Tire Technology (CTT)*
- Jointless Band Technology™
- Reinforced Side Layer†
- Dimpled Sidewall†

BENEFITS

- Helps provide a balance of wet and dry performance
- Ride uniformity and excellent footprint shape
- Enhanced grip, control, energy absorption and treadwear in a range of driving conditions
- Helps protect rims from accidental curb damage
- Sidewall construction to help allow continued driving on a flat tire for up to 50 miles at 50 mph in normal conditions
- Less tire weight and rounder cavity shape help provide a softer ride
- Helps maintain the tire's shape and enables smooth performance at highway speeds
- Temporarily supports the vehicle's weight when air pressure is lost
- Helps limit temperature increases in the sidewall when the tire is driven while flat



All-Season



Dry Traction



Ultra Wet
Traction



Cornering
Stability



Original Equipment on Chevrolet, Honda, Hyundai, Infiniti, Lexus, Mazda, Mercedes-Benz, Mitsubishi, Saab, Scion and Toyota

† Refer to the run-flat owner's manual/limited warranty recommendations on operation at low or no air pressure. Tire pressure monitoring system required. Sold separately.

* Only on SP Sport 5000 DSST CTT and SP Sport 5000M DSST CTT.

† Only on SP Sport 5000 A/S DSST CTT.

ALL-SEASON SPORT/TOURING

PERFORMANCE

SP SPORT 5000 SPECIFICATIONS

SIZE	SERVICE DESCRIPTION	LOAD RANGE	SIDEWALL	PRODUCT CODE	MATERIAL NUMBER	APPROVED RIM WIDTH (INS)	MEASURING RIM WIDTH (INS)	SECTION WIDTH (INS)	OVERALL DIAMETER (INS)	MAX LOAD (LBS)	TREAD DEPTH (IN 32NDS)	REVS/ MILE	UTQG	ORIGINAL EQUIPMENT FITMENT
P195/65R15	89H	SL	BSL	265038565	196625	5.5 - 7.0	6.0	7.9	25.2	1,279	10	836	340 A A	Honda Civic: 06-10
195/60R16	89H	SL	BSW	265037601	204870	5.5 - 7.0	6.0	7.9	25.2	1,279	10	829	340 A A	Scion XD: 07-17
P215/60R16	94V	SL	BSW	265014754	177717	6.0 - 7.5	6.5	8.7	26.1	1,477	10	800	340 A A	Lexus ES 300, ES 330: 04-06, Toyota Camry: 04-06
P225/55R17	95H	SL	BSW	265037643	185228	6.0 - 8.0	7.0	9.2	26.8	1,521	10	781	340 A A	Lexus LS 430: 04-06
245/45R17	95V	SL	BSW	265037648	198881	7.5 - 9.0	8.0	9.6	25.7	1,521	10	814	340 A A	Lexus LS: 06-14 (R)
P245/50ZR17	98W	SL	BSW	265037613	173154	7.0 - 8.5	7.5	10.0	26.7	1,653	10	783	340 AA A	
255/60R17	106H	SL	VSF	265037661	193406	7.0 - 9.0	7.5	10.2	29.1	2,094	11	719	340 A A	Chevrolet TrailBlazer: 05-06
±275/55R17	109V	SL	BSW	265014756	193265	7.5 - 9.5	8.5	11.2	28.9	2,271	11	723	360 A A	Mercedes-Benz ML 320: 04, Mercedes-Benz ML 500: 04
215/45R18	89W	SL	BSW	265038960	225746	7.0 - 8.0	7.0	8.4	25.6	1,279	10	816	340 B A	Mazda MAZDA3: 14-17
225/55R18	98H	SL	BLT	265037658	231954	6.0 - 8.0	7.0	9.2	27.8	1,653	10	752	340 A A	Mitsubishi Outlander: 17
P245/45R18	96V	SL	BSW	265037645	194911	7.5 - 9.0	8.0	9.6	26.7	1,565	10	784	340 A A	Lexus LS 430: 05-06
P255/55R18	104H	SL	VSF	265037657	193408	7.0 - 9.0	8.0	10.4	29.0	1,984	11	720	340 AA A	Chevrolet TrailBlazer: 05, Saab 9-7X: 05-09
P225/45R19	92W	SL	BSW	265037649	224678	7.0 - 8.5	7.5	8.9	27.0	1,389	10	775	340 A A	Mazda MAZDA6: 14-17
SP SPORT 5000 DSST CTT														
P225/50RF17	93V	SL	BSW	265021150	196531	6.0 - 8.0	7.0	9.2	25.9	1,433	10	807	340 A A	Lexus GS: 06-11
P245/40RF19	94V	SL	BSW	265021144	225411	8.0 - 9.5	8.5	9.8	26.7	1,477	10	782	260 B A	Infiniti Q50: 15-16
P255/40RF19	96V	SL	BSW	265021145	232563	8.5 - 10.0	9.0	10.2	27.1	1,565	10	771	260 A A	Infiniti Q60: 17
SP SPORT 5000 DSST NRT (Noise Reduction Technology)														
P255/40RF19	94V	SL	BSW	265021153	231935	8.5 - 10.0	9.0	10.2	27.1	1,477	10	771	260 B A	

Do not attempt to mount 16" rim diameter tires on 16.5" rim diameter wheels; this may result in serious injury or death.

SP SPORT 5000M SPECIFICATIONS

SIZE	SERVICE DESCRIPTION	LOAD RANGE	SIDEWALL	PRODUCT CODE	MATERIAL NUMBER	APPROVED RIM WIDTH (INS)	MEASURING RIM WIDTH (INS)	SECTION WIDTH (INS)	OVERALL DIAMETER (INS)	MAX LOAD (LBS)	TREAD DEPTH (IN 32NDS)	REVS/ MILE	UTQG	ORIGINAL EQUIPMENT FITMENT
225/45R17	91V	SL	BSW	265037647	198850	7.0 - 8.5	7.5	8.9	25.0	1,356	10	836	340 A A	Lexus IS: 06-17 (F)
**P225/55R17	95H	SL	BSW	265021143	207751	6.0 - 8.0	7.0	9.2	26.8	1,521	10	781	340 A A	Hyundai Genesis: 08-12
P215/45R18	89V	SL	BSW	265025145	203379	7.0 - 8.0	7.0	8.4	25.6	1,279	10	815	360 A A	Mitsubishi Lancer: 08-17
P235/50R18	97V	SL	BSW	265021152	207740	6.5 - 8.5	7.5	9.7	27.3	1,609	10	766	340 A A	Hyundai Genesis: 08-16
P275/55R20	111H	SL	VSF	265014741	201035	7.5 - 9.5	8.5	11.2	31.9	2,403	11	655	340 A A	Toyota Sequoia: 07-17, Toyota Tundra: 07-17
SP SPORT 5000M DSST CTT														
245/40RF18	93Y	SL	BSW	265021141	201976	8.0 - 9.5	8.5	9.8	25.7	1,433	10	813	280 A A	Lexus GS: 06-11, Lexus SC: 06-10
P245/40RF18	93V	SL	BSW	265021142	201977	8.0 - 9.5	8.5	9.8	25.7	1,433	10	813	340 A A	Lexus GS: 06-11
P265/50R20	106V	SL	BSW	265021151	206280	7.5 - 9.5	8.5	10.9	30.5	2,094	10	686	280 A A	Infiniti FX45: 08

**Discontinued 2016.



ALL-SEASON SPORT/TOURING

SP SPORT® 5100

Ultra High-Performance All-Season Tire



FEATURES

Aggressive all-season tread design

Increased contact area

High speed rated

BENEFITS

Helps provide traction and control all year round

Optimizes grip in adverse weather

Helps limit temperature increases in the sidewall when the tire is driven while flat

SP SPORT 5100 SPECIFICATIONS

SIZE	SERVICE DESCRIPTION	LOAD RANGE	SIDEWALL	PRODUCT CODE	MATERIAL NUMBER	APPROVED RIM WIDTH (INS)	MEASURING RIM WIDTH (INS)	SECTION WIDTH (INS)	OVERALL DIAMETER (INS)	MAX LOAD (LBS)	TREAD DEPTH (IN 32NDS)	REVS/ MILE	UTQG	ORIGINAL EQUIPMENT FITMENT
P235/45R18	94V	SL	BSW	265028100	222471	7.5 - 9.0	8.0	9.3	26.3	1,477	10	794	340 A A	Lexus GS: 13-17, Lexus RC: 15-17, Hyundai Tundra: 12-16



All-Season



Original Equipment on Hyundai and Lexus



COMMUTER TOURING



Grandtrek® AT20	Grandtrek Touring® A/S	Grandtrek® ST30	SP® 31	Enasave®
An Excellent Choice for Your Luxury SUV	Original Equipment Luxury SUV Tire	Original Equipment All-Season Truck and SUV Tire	H- and S-Rated All-Season Tire	Original Equipment on Select Import Vehicles

COMMUTER TOURING

	PASSENGER					CUV/LIGHT TRUCK	CUV								
	Signature II (Pg. 174)	SP® 31 (Pg. 176)	SP® 31 A.A/S (Pg. 176)	Enesave® (Pg. 177)	SP® 10® (Not Shown)	Grandtrek® AT20 (Pg. 178)	Grandtrek® ST30 (Pg. 180)	Grandtrek® ST20 (Pg. 181)	Grandtrek Touring® AS (Pg. 182)	Grandtrek Touring® AS DSST (Pg. 182)	Grandtrek® PT2A (Pg. 183)	Grandtrek® AT21 (Pg. 184)	Grandtrek® AT23 (Pg. 184)	Grandtrek® PT3A (Not Shown)	Grandtrek® ST8000 (Not Shown)
165/65R14				79S											
175/65R14		81S			84S										
185/65R14	86T*			79S											
145/65R15				72H											
175/60R15				81H											
175/65R15		84S	84S												
185/60R15	84T*														
185/65R15	88T*														
195/55R15		84H													
195/60R15	88H*														
195/65R15	91H*			89S											
P195/65R15		89S													
205/55R15		84S	84S												
205/60R15	91H*														
205/65R15	94T*														
205/70R15	96T*														
215/70R15	98T*					97S									
185/55R16				83V											
195/50R16		84H													
195/55R16	87V*														
195/60R16		89S													
205/55R16	91H*														
205/60R16	92H*														
205/65R16	95H*														
215/55R16	93H*														
215/60R16	95H*														
215/65R16	98T*								98H						
215/70R16								99S, 99H							
225/60R16	98T*														
225/65R16	100H*														
235/60R16	100T*														
235/65R16	103T*														
245/75R16						109S									
265/70R16											111S				

*Discontinued 2016.

COMMUTER TOURING TIRE SELECTOR CHART

	PASSENGER					CUV/LIGHT TRUCK	CUV								
	Signature II (Pg. 174)	SP® 31 (Pg. 176)	SP® 31 A.A/S (Pg. 176)	Encasane® (Pg. 177)	SP® 10® (Not Shown)	Grandtrek® AT20 (Pg. 178)	Grandtrek® ST30 (Pg. 180)	Grandtrek® ST20 (Pg. 181)	Grandtrek Touring® AS (Pg. 182)	Grandtrek Touring® AS DSST (Pg. 182)	Grandtrek® PT2A (Pg. 183)	Grandtrek® AT21 (Pg. 184)	Grandtrek® AT23 (Pg. 184)	Grandtrek® PT3A (Not Shown)	Grandtrek® ST8000 (Not Shown)
215/50R17	95V*														
215/55R17	94V*														
215/60R17	96T														
215/65R17	99T*														
225/50R17	94V*														
225/50R17	94V*														
225/55R17	97V*														
225/60R17	99T*							98H							
225/65R17	102T*						102H								
235/55R17	99H*														
245/65R17							105S								
265/65R17						110S									
265/70R17						113S									
225/55R18	98H*														
225/60R18						99H	100H								
235/60R18								103H, 102V							
265/70R18												116H			
275/60R18												111H			
285/60R18												114V, 116V			
235/50R19								99H	99H						
235/55R19								101V							
245/55R19							103H								
255/50R19								107H							
235/45R20								100H							
255/50R20															109V*
285/50R20										111V, 112V					
275/50R21													113V		

*Discontinued 2016.



SIGNATURE II

All-Season Grip and Contemporary Styling
for Drivers Who Want Traction and a Sophisticated Look



FEATURES

Optimized tread pattern

VersaLoad Technology™

Evaqua Grooves™

Multi-directional siping

Sophisticated sidewall design

BENEFITS

Helps promote long and even treadwear

Helps provide consistent handling, ride comfort and treadwear in a wide range of load conditions

Aid in effective water evacuation for all-season performance

Helps provide effective grip for traction in wet and snow conditions

For enhanced on-vehicle appearance



All-Season



Comfortable,
Refined Handling



Original Equipment on Jeep

SIGNATURE II SPECIFICATIONS

SIZE	SERVICE DESCRIPTION	LOAD RANGE	SIDEWALL	PRODUCT CODE	MATERIAL NUMBER	APPROVED RIM WIDTH (INS)	MEASURING RIM WIDTH (INS)	SECTION WIDTH (INS)	OVERALL DIAMETER (INS)	MAX LOAD (LBS)	TREAD DEPTH (IN 32NDS)	REVS/ MILE	UTQG	ORIGINAL EQUIPMENT FITMENT
* 185/65R14	86T	SL	BSW	266004822	219566	5.0 - 6.5	5.5	7.4	23.5	1,168	10	889	620 A B	
* 185/60R15	84T	SL	BSW	266004800	219484	5.0 - 6.5	5.5	7.5	23.8	1,102	10	880	620 A B	
* 185/65R15	88T	SL	BSW	266004824	219568	5.0 - 6.5	5.5	7.4	24.5	1,235	10	855	620 A B	
* 195/60R15	88H	SL	BSW	266004801	219485	5.5 - 7.0	6.0	7.9	24.2	1,235	10	864	580 A A	
* 195/65R15	91H	SL	BSW	266004804	219488	5.5 - 7.0	6.0	7.9	25.0	1,356	10	836	580 A A	
* 205/60R15	91H	SL	BSW	266004802	219486	5.5 - 7.5	6.5	8.2	24.7	1,356	10	846	580 A A	
* 205/65R15	94T	SL	BSW	266004805	219489	5.5 - 7.5	6.0	8.3	25.5	1,477	10	820	620 A B	
* 205/70R15	96T	SL	BSW	266004827	219572	5.0 - 7.0	6.0	8.2	26.3	1,565	10	795	620 A B	
* 215/70R15	98T	SL	BSW	266004806	219490	5.5 - 7.0	6.5	8.7	26.9	1,653	10	777	620 A B	
* 195/55R16	87V	SL	BSW	266004828	225800	5.5 - 7.0	6.0	7.9	24.4	1,201	10	857	580 A A	
* 205/55R16	91H	SL	BSW	266004807	219551	5.5 - 7.5	6.5	8.4	24.9	1,356	10	840	580 A A	
* 205/60R16	92H	SL	BSW	266004809	219553	5.5 - 7.5	6.0	8.2	25.7	1,389	10	816	580 A A	
* 205/65R16	95H	SL	BSW	266004829	225882	5.5 - 7.5	6.0	8.2	26.5	1,521	10	789	580 A A	
* 215/55R16	93H	SL	BSW	266004808	219552	6.0 - 7.5	7.0	8.9	25.3	1,433	10	827	580 A A	
* 215/60R16	95H	SL	BSW	266004810	219554	6.0 - 7.5	6.5	8.7	26.1	1,521	10	800	580 A A	
* 215/65R16	98T	SL	BSW	266004812	219556	6.0 - 7.5	6.5	8.7	27.0	1,653	10	774	620 A B	
* 225/60R16	98T	SL	BSW	266004811	219555	6.0 - 8.0	6.5	9.0	26.6	1,653	10	786	620 A B	
* 225/65R16	100H	SL	BSW	266004826	219570	6.0 - 8.0	6.5	9.0	27.5	1,764	10	760	580 A A	
* 235/60R16	100T	SL	BSW	266004823	219567	6.5 - 8.5	7.0	9.5	27.1	1,764	10	771	620 A B	
* 235/65R16	103T	SL	BSW	266004813	219557	6.5 - 8.5	7.0	9.5	28.0	1,929	10	746	620 A B	
* 215/50R17	95V	XL	BSW	266004814	219558	6.0 - 7.5	7.0	8.9	25.5	1,521	10	820	580 A A	
* 215/55R17	94V	SL	BSW	266004816	219560	6.0 - 7.5	7.0	8.9	26.3	1,477	10	795	580 A A	
215/60R17	96T	SL	BSW	266004819	219563	6.0 - 7.5	6.5	8.7	27.2	1,565	10	768	620 A B	Jeep Renegade: 16
* 215/65R17	99T	SL	BSW	266004803	219487	6.0 - 7.5	6.5	8.7	28.0	1,709	10	746	620 A B	
* 225/50R17	94V	SL	BSW	266004815	219559	6.0 - 8.0	7.0	9.2	25.9	1,477	10	807	580 A A	
* 225/55R17	97V	SL	BSW	266004817	219561	6.0 - 8.0	7.0	9.2	26.8	1,609	10	780	580 A A	
* 225/60R17	99T	SL	BSW	266004820	219564	6.0 - 8.0	6.5	9.0	27.6	1,709	10	756	620 A B	
* 225/65R17	102T	SL	BSW	266004821	219565	6.0 - 8.0	6.5	9.0	28.5	1,874	10	733	620 A B	
* 235/55R17	99H	SL	BSW	266004818	219562	6.5 - 8.5	7.5	9.7	27.2	1,709	10	769	580 A A	
* 225/55R18	98H	SL	BSW	266004825	219569	6.0 - 8.0	7.0	9.2	27.8	1,653	10	752	580 A A	

*Discontinued 2016.

Do not attempt to mount 16" rim diameter tires on 16.5" rim diameter wheels; this may result in serious injury or death.



SP 31

SP 31 A A/S

SP[®] 31 SP[®] 31 A A/S

H- and S-Rated All-Season Tire

FEATURES

Asymmetric tread

Multi-Pitch Tread
Design Technology™

Circumferential tread grooves

M+S-rated, all-season
tread design

BENEFITS

Helps provide a balance of wet and
dry performance

Helps reduce noise for a quiet ride

Help evacuate water away from the
footprint for excellent wet traction

Helps deliver all-season traction and
wet handling

SP 31 SPECIFICATIONS

SIZE	SERVICE DESCRIPTION	LOAD RANGE	SIDEWALL	PRODUCT CODE	MATERIAL NUMBER	APPROVED RIM WIDTH (INS)	MEASURING RIM WIDTH (INS)	SECTION WIDTH (INS)	OVERALL DIAMETER (INS)	MAX LOAD (LBS)	TREAD DEPTH (IN 32NDS)	REVS/ MILE	UTQG	ORIGINAL EQUIPMENT FITMENT
P175/65R14	81S	SL	BSW	265024566	200515	5.0 - 6.0	5.0	7.0	23.0	1,019	9	909	320 A B	
P175/65R14	81S	SL	BSW	265024567	200517	5.5 - 7.0	6.0	7.9	23.4	1,102	10	893	320 A A	
175/65R15	84S	SL	BSW	265024568	209091	5.0 - 6.0	5.0	7.0	24.0	1,102	9	871	320 A B	Honda Fit: 09-14
P195/55R15	84H	SL	BSW	265024555	200516	5.0 - 6.0	5.0	7.0	23.0	1,019	9	909	320 A B	
P195/65R15	89S	SL	BSW	265024565	199135	5.5 - 7.0	6.0	7.9	25.2	1,279	10	836	320 A B	Honda Civic Hybrid: 06-10, Honda Civic: 08-10

SP 31 A A/S SPECIFICATIONS

SIZE	SERVICE DESCRIPTION	LOAD RANGE	SIDEWALL	PRODUCT CODE	MATERIAL NUMBER	APPROVED RIM WIDTH (INS)	MEASURING RIM WIDTH (INS)	SECTION WIDTH (INS)	OVERALL DIAMETER (INS)	MAX LOAD (LBS)	TREAD DEPTH (IN 32NDS)	REVS/ MILE	UTQG	ORIGINAL EQUIPMENT FITMENT
175/65R15	84S	SL	BSW	263027501	214152	5.0 - 6.0	5.0	7.0	24.0	1,102	9	871	320 A B	Honda Insight: 10-14



All-Season



Original Equipment on Honda

ENASAVE®

Original Equipment on Select Import Vehicles



ENASAVE SPECIFICATIONS

SIZE	SERVICE DESCRIPTION	LOAD RANGE	SIDEWALL	PRODUCT CODE	MATERIAL NUMBER	APPROVED RIM WIDTH (INS)	MEASURING RIM WIDTH (INS)	SECTION WIDTH (INS)	OVERALL DIAMETER (INS)	MAX LOAD (LBS)	TREAD DEPTH (IN 32NDS)	REVS/ MILE	UTQG	ORIGINAL EQUIPMENT FITMENT
165/65R14	79S	SL	BSW	267028902	226033	4.5 - 6.0	5.0	7.9	24.0	963	9	871	340 A B	Mitsubishi Mirage: 14 -17
145/65R15	72H	SL	BSW	267028900	221613	4.0 - 5.0	4.5	5.9	22.4	783	8	933	340 A A	Mitsubishi IMIEV: 12-17 (F)
175/60R15	81H	SL	BSW	267028901	221614	5.0 - 6.0	5.0	7.0	23.3	1,019	9	898	340 A A	Mitsubishi IMIEV: 12-17 (R)
195/65R15	89S	SL	BSW	267028904	231271	5.5 - 7.0	6.0	7.9	25.0	1,356	8	836	540 A B	Toyota Prius: 17
185/55R16	83V	SL	BSW	267028903	226423	5.0 - 6.5	6.0	7.6	24.2	1,074	8	864	360 A A	Honda Fit: 14-15

Do not attempt to mount 16" rim diameter tires on 16.5" rim diameter wheels; this may result in serious injury or death.



All-Season



Fuel Efficiency



Original Equipment on Honda, Mitsubishi and Toyota



GRANDTREK® AT20

An Excellent Choice for Your Luxury SUV

FEATURES

VersaLoad Technology™

Aggressive all-season tread design

Multi-Pitch Tread Design Technology™

Open shoulder design with deep lateral grooves and cross-cut sipes

Bead apex design and Dimensionally Stable Polyester™

BENEFITS

Consistent handling, ride comfort and treadwear in a wide range of load conditions

Helps grip and control in all-season conditions

Helps reduce noise for a quiet ride

Helps deliver all-season traction

Help maintain tire uniformity for a smooth, comfortable ride

GRANDTREK AT20 SPECIFICATIONS

SIZE	SERVICE DESCRIPTION	LOAD RANGE	SIDEWALL	PRODUCT CODE	MATERIAL NUMBER	APPROVED RIM WIDTH (INS)	MEASURING RIM WIDTH (INS)	SECTION WIDTH (INS)	OVERALL DIAMETER (INS)	MAX LOAD (LBS)	TREAD DEPTH (IN 32NDS)	REVS/ MILE	UTQG	ORIGINAL EQUIPMENT FITMENT
P215/70R15	97S	SL	BSL	290105531	190083	5.5 - 7.0	6.5	8.7	26.9	1,620	11	777	300 B B	Toyota Tacoma: 05-15
P245/75R16	109S	SL	BSL	290105537	190049	6.5 - 8.0	7.0	9.8	30.5	2,271	11	686	300 B B	Toyota Tacoma: 05-15
P265/65R17	110S	SL	BSL	290105539	190081	7.5 - 9.5	8.0	10.7	30.6	2,337	11	684	300 B B	Toyota Tacoma: 05-15
P265/70R17	113S	SL	BSW	290105041	200475	7.0 - 9.0	8.0	10.7	31.7	2,535	11	660	300 B B	Toyota 4Runner: 04-17, Toyota FJ Cruiser: 07-14
P225/60R18	99H	SL	BSW	290105216	209855	6.0 - 8.0	6.5	9.0	28.6	1,709	10	730	300 B A	Suzuki Grand Vitara: 09-11
P225/60R18	99H	SL	BSL	290105035	227553	6.0 - 8.0	6.5	9.0	28.6	1,709	10	730	300 B A	Honda CRV: 15-17

Do not attempt to mount 16" rim diameter tires on 16.5" rim diameter wheels; this may result in serious injury or death.

Always maintain tire inflation pressure at levels recommended by the vehicle manufacturer as shown on the vehicle placard or in the owner's manual.

NOTE: When replacing a vehicle's original equipment light truck tires with passenger car tires, the load on each replacement car tire must not exceed the maximum load stamped on the replacement car tire sidewall divided by 1.10.



On-Road



Original Equipment on Honda, Suzuki and Toyota



GRANDTREK® ST30

Original Equipment All-Season Truck and SUV Tire

FEATURES

M+S-rated all-season tread pattern

Asymmetric tread pattern

Circumferential tread grooves

Multi-Pitch Tread Design Technology™

Jointless Band Technology™

Black serrated sidewall and raised black letter design

BENEFITS

Aids control in all-season conditions

Helps provide a balance of wet and dry performance

Help evacuate water away from the footprint for excellent wet traction

Helps reduce noise for a quiet ride

Helps maintain the tire's shape and enables smooth performance at highway speeds

Stylish appearance

GRANDTREK ST30 SPECIFICATIONS

SIZE	SERVICE DESCRIPTION	LOAD RANGE	SIDEWALL	PRODUCT CODE	MATERIAL NUMBER	APPROVED RIM WIDTH (INS)	MEASURING RIM WIDTH (INS)	SECTION WIDTH (INS)	OVERALL DIAMETER (INS)	MAX LOAD (LBS)	TREAD DEPTH (IN 32NDS)	REVS/MILE	UTQG	ORIGINAL EQUIPMENT FITMENT
225/65R17	102H	SL	VSB	290126784	217104	6.0 - 8.0	6.5	9.0	724.0	1,874	10	733	360 A A	Toyota RAV4: 13-17, NX: 14-17
225/65R17	102H	SL	BSW	290126789	232633	6.0 - 8.0	6.5	9.0	724.0	1,874	10	733	360 A A	
225/65R17	102H	SL	BSW	290126785	224122	6.0 - 8.0	6.5	9.0	28.5	1,874	9	733	360 A A	Nissan Rogue: 17
P245/65R17	105S	SL	BSW	290126783	205081	7.0 - 8.5	7.0	9.8	29.5	2,039	10	708	360 A B	Toyota Highlander: 08-14
225/60R18	100H	SL	BSW	290126787	223143	6.0 - 8.0	6.5	9.0	28.6	1,764	10	730	360 A A	Nissan Rogue: 14-17
225/60R18	100H	SL	BSW	290126788	229637	6.0 - 8.0	6.5	9.0	28.6	1,764	10	730	360 A A	Nissan Rogue Hybrid: 17
245/55R19	103H	SL	BSW	290126786	224541	7.0 - 8.0	7.5	10.0	29.7	1,929	10	705	360 A A	

Always maintain tire inflation pressure at levels recommended by the vehicle manufacturer as shown on the vehicle placard or in the owner's manual.

NOTE: When replacing a vehicle's original equipment light truck tires with passenger car tires, the load on each replacement car tire must not exceed the maximum load stamped on the replacement car tire sidewall divided by 1.10.



On-Road



Original Equipment on Nissan and Toyota



GRANDTREK® ST20

Original Equipment All-Season Truck and SUV Tire

FEATURES

- M+S-rated all-season tread pattern

- Circumferential tread grooves

- Advanced tread

- 5-Pitch Technology™

- Black serrated sidewall and raised black letter design

BENEFITS

- Aids control in all-season conditions

- Help evacuate water away from the footprint for excellent wet traction

- Enhanced wet-weather performance

- Aids noise reduction for a quiet ride

- Stylish appearance

GRANDTREK ST20 SPECIFICATIONS

SIZE	SERVICE DESCRIPTION	LOAD RANGE	SIDEWALL	PRODUCT CODE	MATERIAL NUMBER	APPROVED RIM WIDTH (INS)	MEASURING RIM WIDTH (INS)	SECTION WIDTH (INS)	OVERALL DIAMETER (INS)	MAX LOAD (LBS)	TREAD DEPTH (IN 32NDS)	REVS/ MILE	UTQG	ORIGINAL EQUIPMENT FITMENT
215/70R16	99S	SL	BSW	290132910	176369	5.5 - 7.0	6.5	8.7	27.9	1,709	10	749	300 B B	Toyota RAV4: 04
P215/70R16	99H	SL	BLT	290139031	225654	5.5 - 7.0	6.5	8.7	27.9	1,709	10	750	300 B A	Mitsubishi Outlander: 14-16
P225/60R17	98H	SL	BSW	290139030	205083	6.0 - 8.0	6.5	9.0	27.6	1,653	10	756	300 B A	Nissan Rogue: 08-13

Do not attempt to mount 16" rim diameter tires on 16.5" rim diameter wheels; this may result in serious injury or death. Always maintain tire inflation pressure at levels recommended by the vehicle manufacturer as shown on the vehicle placard or in the owner's manual.

NOTE: When replacing a vehicle's original equipment light truck tires with passenger car tires, the load on each replacement car tire must not exceed the maximum load stamped on the replacement car tire sidewall divided by 1.10.



On-Road



Original Equipment on Mitsubishi, Nissan and Toyota



GRANDTREK TOURING® A/S

(Select sizes with DSST®†)

Original Equipment Luxury SUV Tire

FEATURES

M+S-rated all-season tread pattern

Multi-Pitch Tread Design Technology™

Jointless Band Technology™

VersaLoad Technology™

Silica tread

Dunlop® Self-Supporting Technology (DSST)†**

BENEFITS

Aids control in all-season conditions

Helps reduce noise for a quiet ride

Helps maintain the tire's shape and enables smooth performance at highway speeds

Consistent handling, ride comfort and treadwear in a wide range of load conditions

Enhances dry and wet traction while helping to reduce rolling resistance

Sidewall construction to help allow continued driving on a flat tire for up to 50 miles at 50 mph in normal conditions

GRANDTREK TOURING A/S SPECIFICATIONS

SIZE	SERVICE DESCRIPTION	LOAD RANGE	SIDEWALL	PRODUCT CODE	MATERIAL NUMBER	APPROVED RIM WIDTH (INS)	MEASURING RIM WIDTH (INS)	SECTION WIDTH (INS)	OVERALL DIAMETER (INS)	MAX LOAD (LBS)	TREAD DEPTH (IN 32NDS)	REVS/ MILE	UTQG	ORIGINAL EQUIPMENT FITMENT
*215/65R16	98H	SL	BLT	290123501	208704	6.0 - 7.5	6.5	8.7	27.0	1,653	10	774	200 A A	Volkswagen Tiguan: 08-14
215/65R16	98H	SL	BLT	290123514	231012	6.0 - 7.5	6.5	8.7	27.0	1,653	10	774	200 A A	
P235/60R18	102V	SL	BSW	290123503	209613	6.5 - 8.5	7.0	9.5	29.1	1,874	10	718	280 A A	Lexus RX: 09-17
235/60R18	103H	SL	BLT	290123511	229381	6.5 - 8.5	7.0	9.5	29.1	1,929	10	718	200 A A	
235/50R19	99H	SL	BLT	290123512	230191	6.5 - 8.5	7.5	9.7	28.3	1,709	10	738	200 A A	
P235/55R19	101V	SL	VSB	290123502	209411	8.5 - 6.5	7.5	9.7	29.2	1,819	10	716	280 A A	Lexus RX: 09-17
P235/55R19	101V	SL	BLT	290123515	231884	8.5 - 6.5	7.5	9.7	29.2	1,819	10	716	280 A A	
255/50R19	107H	XL	VSB	290123507	218487	7.0 - 9.0	8.0	10.4	29.1	2,149	10	718	200 A A	Mercedes-Benz ML-Class: 12-13
235/45R20	100H	XL	BLT	290123510	227602	7.5 - 9.0	8.0	9.3	28.4	1,764	10	739	200 A A	
GRANDTREK TOURING A/S DSST														
*235/50R19	99H	SL	BLT	290123509	223834	6.5 - 8.5	7.5	9.7	28.3	1,709	10	738	200 A A	Mercedes-Benz GLK-Class: 13
235/50R19	99H	SL	BLT	290123513	230704	6.5 - 8.5	7.5	9.7	28.3	1,709	10	738	200 A A	

*Discontinued 2016.

Do not attempt to mount 16" rim diameter tires on 16.5" rim diameter wheels; this may result in serious injury or death.

Always maintain tire inflation pressure at levels recommended by the vehicle manufacturer as shown on the vehicle placard or in the owner's manual.

NOTE: When replacing a vehicle's original equipment light truck tires with passenger car tires, the load on each replacement car tire must not exceed the maximum load stamped on the replacement car tire sidewall divided by 1.10.



On-Road



Original Equipment on Lexus, Mercedes-Benz and Volkswagen

† Refer to the run-flat owner's manual/limited warranty recommendations on operation at low or no air pressure. Tire pressure monitoring system required. Sold separately.

** Only on Grandtrek Touring A/S DSST.



GRANDTREK® PT2A

On-Road Luxury Performance With Off-Road Toughness

FEATURES

- Multi-Pitch Tread Design Technology™
- Narrow centerline lug grooves
- Wide lug grooves

BENEFITS

- Helps reduce noise for a quiet ride
- Help optimize noise reduction for a quiet ride
- Help provide traction in mud and snow

GRANDTREK PT2A SPECIFICATIONS

SIZE	SERVICE DESCRIPTION	LOAD RANGE	SIDEWALL	PRODUCT CODE	MATERIAL NUMBER	APPROVED RIM WIDTH (INS)	MEASURING RIM WIDTH (INS)	SECTION WIDTH (INS)	OVERALL DIAMETER (INS)	MAX LOAD (LBS)	TREAD DEPTH (IN 32NDS)	REVS/ MILE	UTQG	ORIGINAL EQUIPMENT FITMENT
P285/50R20	111V	SL	BSW	290122310	206327	8.0 - 10.0	9.0	11.7	31.3	2,043	10	669	360 A A	Lexus LX: 08-15, Toyota Land Cruiser 200: 16-17
285/50R20	112V	SL	SBL	290122311	231002	8.0 - 10.0	9.0	11.7	31.3	2,469	10	669	360 A A	Lexus LX: 16

Always maintain tire inflation pressure at levels recommended by the vehicle manufacturer as shown on the vehicle placard or in the owner's manual.

NOTE: When replacing a vehicle's original equipment light truck tires with passenger car tires, the load on each replacement car tire must not exceed the maximum load stamped on the replacement car tire sidewall divided by 1.10.



On-Road



Original Equipment on Lexus and Toyota

GRANDTREK® AT21 GRANDTREK® AT23

Original Equipment All-Season Truck and SUV Tire



GRANDTREK AT23
TREAD PATTERN



FEATURES

- M+S-rated all-season tread pattern
- Circumferential tread grooves
- Advanced tread
- 5-Pitch Technology™

BENEFITS

- Aids control in all-season conditions
- Help evacuate water away from the footprint for excellent wet traction
- Enhanced wet-weather performance
- Aids noise reduction for a quiet ride

GRANDTREK AT21 SPECIFICATIONS

SIZE	SERVICE DESCRIPTION	LOAD RANGE	SIDEWALL	PRODUCT CODE	MATERIAL NUMBER	APPROVED RIM WIDTH (INS)	MEASURING RIM WIDTH (INS)	SECTION WIDTH (INS)	OVERALL DIAMETER (INS)	MAX LOAD (LBS)	TREAD DEPTH (IN 32NDS)	REVS/ MILE	UTQG	ORIGINAL EQUIPMENT FITMENT
P265/70R16	111S	SL	BSW	290014814	166071	7.0 - 9.0	8.0	10.7	30.6	2,403	11	682	300 B B	Toyota Sequoia: 04-05, Toyota Tacoma 4X4: 04, Toyota Tundra: 04

GRANDTREK AT23 SPECIFICATIONS

SIZE	SERVICE DESCRIPTION	LOAD RANGE	SIDEWALL	PRODUCT CODE	MATERIAL NUMBER	APPROVED RIM WIDTH (INS)	MEASURING RIM WIDTH (INS)	SECTION WIDTH (INS)	OVERALL DIAMETER (INS)	MAX LOAD (LBS)	TREAD DEPTH (IN 32NDS)	REVS/ MILE	UTQG	ORIGINAL EQUIPMENT FITMENT
265/70R18	116H	SL	BSW	290014826	232659	7.0 - 9.0	8.0	10.7	32.6	2,756	11	641	360 A A	Nissan Armada: 17
P275/60R18	111H	SL	BSW	290014824	185301	7.5 - 9.5	8.0	11.0	31.0	2,403	12	675	360 A A	Lexus LX 470, Toyota Land Cruiser: 04-07
P285/60R18	114V	SL	BSW	290014840	205267	8.0 - 10.0	8.5	11.5	31.5	2,601	11	663	360 A A	Toyota Land Cruiser: 08-15
285/60R18	116V	SL	SBL	290014825	231001	8.0 - 10.0	8.5	11.5	31.5	2,756	11	664	360 A A	Toyota Land Cruiser 200: 13-17

Do not attempt to mount 16" rim diameter tires on 16.5" rim diameter wheels; this may result in serious injury or death. Always maintain tire inflation pressure at levels recommended by the vehicle manufacturer as shown on the vehicle placard or in the owner's manual.

NOTE: When replacing a vehicle's original equipment light truck tires with passenger car tires, the load on each replacement car tire must not exceed the maximum load stamped on the replacement car tire sidewall divided by 1.10.



On-Road



Original Equipment on Lexus and Toyota

MZ MK3 SPARE

MZ MK3 SPARE SPECIFICATIONS

SIZE	SERVICE DESCRIPTION	LOAD RANGE	SIDEWALL	PRODUCT CODE	MATERIAL NUMBER	APPROVED RIM WIDTH (INS)	MEASURING RIM WIDTH (INS)	SECTION WIDTH (INS)	OVERALL DIAMETER (INS)	MAX LOAD (LBS)	TREAD DEPTH (IN 32NDS)	REVS/ MILE	UTQG	ORIGINAL EQUIPMENT FITMENT
T125/70D16	96M	SL	BL	267037809	233012	4.0 - 4.0	4.0	5.2	22.9	1,565	5	886		
T125/90D16	98M	SL	BL	266012187	232672	3.5 - 3.5	3.5	5.0	24.9	1,653	4	836	#N/A	Mazda CX-3: 16-17
T155/90D18	113M	SL	BL	266012185	174001	4.0 - 4.0	4.0	6.0	29.0	2,535	4	721		
T165/90D18	107M	SL	BL	266012186	225819	4.0 - 6.0	4.0	6.3	29.7	2,149	4	703		Toyota RX: 16-17
T165/90D18	107M	SL	BL	266012186	225778	4.0 - 6.0	4.0	6.3	29.7	2,149	5	703		

Do not attempt to mount 16" rim diameter tires on 16.5" rim diameter wheels; this may result in serious injury or death.



Original Equipment on Mazda and Toyota

WINTER



SP Winter Sport 4D®

Winter Maxx®

Winter Maxx® SJ8

Grandtrek® SJ6

Enhanced Grip and Performance in Winter Driving Conditions

Excellent Ice Grip for Passenger Vehicles

Strong Ice and Snow Performance for SUVs

Powerful Traction on Ice and Snow

WINTER TIRE SELECTOR CHART

	PERFORMANCE							COMMUTER		LT/SUV					PERFORMANCE
	SP Winter Sport 4P® (Pg. 190)	SP Winter Sport 4P® with NoiseShield Technology® (Pg. 190)	SP Winter Sport 4P® ROF (Pg. 190)	SP Winter Sport 3P® (Pg. 192)	SP Winter Sport 3P® ROF (Pg. 192)	SP® Winter Sport M3 (Pg. 194)	SP® Winter Sport M3 DSST® ROF (Pg. 194)	Winter Maxx® (Pg. 196)	Winter Maxx® ROF (Pg. 196)	Winter Maxx® S.J6 (Pg. 196)	Grandtrek® S.J6 (Pg. 200)	Grandtrek® WT M3 (Pg. 202)	Grandtrek® WT M3 DSST® ROF (Pg. 202)	SP LT 60 (Pg. 204)	DSX DSST® ROF (Pg. 205)
175/70R13								82T							
175/65R14								82T							
175/70R14								84T							
185/60R14								82T							
185/65R14								86T							
185/70R14								88T							
175/65R15								84T							
185/55R15								82T							
185/60R15								84T							
185/65R15								88T							
195/55R15								85T							
195/60R15								88T							
195/65R15	91H							91T							
205/65R15								94T					102T		
205/70R15								96T		95Q					
215/70R15								98T		98Q					
225/70R15										100Q					
235/70R15										103Q					
265/70R15										110Q					
175/60R16					86H										
185/55R16								83T							
195/55R16					87H			91T							
205/55R16	91H					91H		94T							
205/60R16				92H				96T							
205/65R16								95T							
205/70R16										97Q					
215/55R16								97T							
215/60R16						95H		99T							
215/65R16								98T	98R	98Q					
215/70R16									100R	99Q					
225/55R16				95H				99T							
225/60R16				98H				102T							
225/70R16									103R						
225/75R16									104R						
235/60R16									100R						
235/70R16									106R	105Q*					
245/70R16									107R	107Q*					
245/75R16									111R	111Q					
255/65R16										109Q					
255/70R16										109Q					
265/70R16									112R	112Q					

*Discontinued 2016.

	PERFORMANCE						COMMUTER		LT/SUV				PERFORMANCE	
	SP Winter Sport 4P® (Pg. 190)	SP Winter Sport 4P® with NoiseShield Technology® (Pg. 191)	SP Winter Sport 4P® ROF (Pg. 190)	SP Winter Sport 3P® (Pg. 192)	SP Winter Sport 3P® ROF (Pg. 192)	SP® Winter Sport M3 (Pg. 194)	SP® Winter Sport M3 DSST® ROF (Pg. 194)	Winter Maxx® (Pg. 196)	Winter Maxx® ROF (Pg. 196)	Winter Maxx® SJR (Pg. 198)	Grandtrek® S.M (Pg. 200)	Grandtrek® WT M3 (Pg. 202)	Grandtrek® WT M3 DSST® ROF (Pg. 202)	SP LT 60 (Pg. 204)
185/50R17					86H									
205/45R17			88V											
205/50R17				93H				93T						
215/45R17								91T						
215/50R17								95T						
215/55R17				98H				94T						
215/60R17				96H				96T	96R					
225/45R17	91H							94T						
225/50R17	94H, 98H		94H	94H, 98H		94H		98T						
225/55R17	101H		97H	97H	97H			101T	97R					
225/60R17					99H				99R	99Q*				
225/65R17									102R					
235/45R17				94H				97T						
235/55R17	99V			99H, 103V					99R					
235/60R17									102R					
235/65R17	108H			104H, 108H					108R	104Q*				
245/45R17				99H, 99V				99T						
245/65R17									107R					
245/70R17									110R					
255/45R17				98V										
265/65R17									112R					
265/70R17									115R	115Q				
215/45R18								93T						
215/55R18			95H											
225/40R18								92T						
225/45R18				95V				95T						
225/50R18				99H										
225/60R18									100R					
225/55R18								98T	98R					
235/40R18				95V, 95W, 98H, 94V										
235/45R18														
235/50R18	97V							101T	97R					
275/65R17										115Q				
235/55R18									100R					
235/60R18									107R	107Q*				
235/65R18									106R					
245/40R18				97V				97T						
245/45R18					100V			100T						
245/50R18			104V		100H									
245/60R18									105R					
255/40R18				95V										
255/45R18								103T						
255/55R18				105H, 109V					109R	109Q*		109H		
265/45R18				101V										
265/60R18									110R					
265/65R18									114R					
275/65R18									116R					
285/35R18				101W										

*Discontinued 2016.

WINTER TIRE SELECTOR CHART

	PERFORMANCE							COMMUTER		LT/SUV					PERFORMANCE
	SP Winter Sport 4P® (Pg. 190)	SP Winter Sport 4P® with NoiseShield Technology® (Pg. 190)	SP Winter Sport 4P® ROF (Pg. 190)	SP Winter Sport 3P® (Pg. 192)	SP Winter Sport 3P® ROF (Pg. 192)	SP® Winter Sport M3 (Pg. 194)	SP® Winter Sport M3 DSST® ROF (Pg. 194)	Winter Maxx® (Pg. 196)	Winter Maxx® ROF (Pg. 196)	Winter Maxx® SJ6 (Pg. 196)	Grandtrek® SJ6 (Pg. 200)	Grandtrek® WT M3 (Pg. 202)	Grandtrek® WT M3 DSST® ROF (Pg. 202)	SP LT 60 (Pg. 204)	DSX DSST® ROF (Pg. 205)
235/35R19				91W											
235/40R19				96V											
235/45R19				99V											
235/50R19				99H, 103H											
235/55R19	101V			101V						101R					
245/40RF19								94W							
245/45R19				102V	102V		98T								
245/55R19									103R	103Q*					
255/35R19				96V											
255/50R19	103V			107H					107R		107V				
255/60R19										109Q					
265/50R19				110V											
265/55R19											109H				
275/35R19						96V									
295/30R19				100W											
245/50R20									102R						
255/35R20				97V, 97W											
255/40RF20														97Q	
255/45R20				101V											
255/50R20									109R						
265/35R20				99V											
265/40R20				104V											
265/45R20	104V														
265/50R20									107R						
275/30R20				97W											
275/45R20				110V							110V				
275/55R20									113R						
275/60R20									115R						
285/35RF20														100Q	
285/50R20									112R						
295/40R20	106V														
275/30R21		98W	98W												
275/35R21				103W											
275/50R21									113R						

*Discontinued 2016.



SP WINTER SPORT 4D[®]

(Select sizes with ROF[†]/NoiseShield Technology[®])

Enhanced Grip and Performance in Winter Driving Conditions



FEATURES

4D Sipe System

V-shape grooves and deep snow notches

Special tread compound

Low weight construction

BENEFITS

Increased number of shoulder-area sipes helps enhance braking and acceleration on snow and ice

Self-interlocking sipes maintain tread block stiffness to help provide excellent handling

Transversal sipes help deliver improved lateral grip

Entire sipe system combines to create even pressure across the treadface, which helps increase snow handling performance and cornering grip

Help enhance snow traction and performance

Helps adhere to wet and icy surfaces

Helps lower rolling resistance for better performance



Severe Snow



Ice Traction



Ultra Wet Traction



Cornering Stability



Steering Responsiveness

[†] Refer to the run-flat owner's manual/limited warranty recommendations on operation at low or no air pressure. Tire pressure monitoring system required. Sold separately.

SP WINTER SPORT 4D SPECIFICATIONS

SIZE	SERVICE DESCRIPTION	LOAD RANGE	SIDEWALL	PRODUCT CODE	MATERIAL NUMBER	APPROVED RIM WIDTH (INS)	MEASURING RIM WIDTH (INS)	SECTION WIDTH (INS)	OVERALL DIAMETER (INS)	MAX LOAD (LBS)	TREAD DEPTH (IN 32NDS)	REVS/ MILE
195/65R15	91H	SL	BLT	265029123	227500	5.5 - 7.0	6.0	7.9	25.0	1,356	10	836
205/55R16	91H	SL	BLT	265029101	223722	5.5 - 7.5	6.5	8.4	24.9	1,356	10	840
225/50R17	94H	SL	BLT	265029125	228012	6.0 - 8.0	7.0	9.2	25.9	1,477	10	807
225/50R17	98H	XL	BLT	265029128	230252	6.0 - 8.0	7.0	9.2	25.9	1,653	10	807
225/55R17	101H	XL	BLT	265029130	230767	6.0 - 8.0	7.0	9.2	26.8	1,819	11	780
235/55R17	99V	SL	BLT	265029110	223731	6.5 - 8.5	7.5	9.7	27.2	1,709	10	768
235/65R17	108H	XL	BLT	265029111	223732	6.5 - 8.5	7.0	9.5	29.1	2,205	11	719
235/50R18	97V	SL	BLT	265029124	228011	6.5 - 8.5	7.5	9.7	27.3	1,609	11	766
235/55R19	101V	SL	BLT	265029118	226424	6.5 - 8.5	7.5	9.7	29.2	1,819	10	716
255/50R19	103V	SL	BLT	265029119	227164	7.0 - 9.0	8.0	10.4	29.1	1,929	10	718
265/45R20	104V	SL	BLT	265029127	229731	8.5 - 10.0	9.0	10.5	29.4	1,984	11	712
295/40R20	106V	SL	BLT	265029126	229730	10.0 - 11.5	10.5	11.9	29.3	2,094	10	714
SP WINTER SPORT 4D NST (NOISESHIELD TECHNOLOGY)												
275/30R21	98W	XL	BLT	265040800	228135	9.0 - 10.0	9.5	10.9	27.5	1,653	10	750
SP WINTER SPORT 4D ROF												
205/45R17	88V	XL	BLT	265029120	227165	6.5 - 7.5	7.0	8.1	24.3	1,235	10	862
225/45R17	91H	SL	BLT	265029121	227166	7.0 - 8.5	7.5	8.9	25.0	1,356	10	837
225/50R17	94H	SL	BLT	265029113	223886	6.0 - 8.0	7.0	9.2	25.9	1,477	10	807
225/50R17	94H	SL	BLT	265029140	228013	6.0 - 8.0	7.0	9.2	25.9	1,477	10	807
225/55R17	97H	SL	BLT	265029129	230731	6.0 - 8.0	7.0	9.2	26.8	1,609	10	781
215/55R18	95H	SL	BLT	265029141	228014	6.0 - 7.5	7.0	8.9	27.3	1,521	11	766
245/50R18	104V	XL	BLT	265029117	226516	7.0 - 8.5	7.5	10.0	27.7	1,984	9	755

Do not attempt to mount 16" rim diameter tires on 16.5" rim diameter wheels; this may result in serious injury or death.



SP WINTER SPORT 3D®

(Select sizes with ROF†)

Responsive Handling and Enhanced Winter Traction



FEATURES

Active Traction Sipe System™

Directional tread design

Multi-Radius Tread Technology™

Jointless Band Technology™

Tread processed with reactive silica

BENEFITS

Central-block “pulling” sipes help provide performance, traction and braking in ice and snow

Intermediate block sipes help provide enhanced lateral handling and control in wet and slushy conditions

Shoulder-area 3D sipes help provide enhanced grip on snow and ice, shoulder stability and excellent dry handling

Enhances wet handling and deep-water performance

Helps deliver superb dry handling while maintaining wet handling

Helps maintain the tire’s shape and enables smooth performance at highway speeds

Aids elasticity at lower temperatures while maintaining enhanced road contact and traction



Severe Snow



Ice Traction



Ultra Wet
Traction



Cornering
Stability



Steering
Responsiveness

† Refer to the run-flat owner's manual/limited warranty recommendations on operation at low or no air pressure. Tire pressure monitoring system required. Sold separately.

PERFORMANCE

SP WINTER SPORT 3D SPECIFICATIONS

SIZE	SERVICE DESCRIPTION	LOAD RANGE	SIDEWALL	PRODUCT CODE	MATERIAL NUMBER	APPROVED RIM WIDTH (INS)	MEASURING RIM WIDTH (INS)	SECTION WIDTH (INS)	OVERALL DIAMETER (INS)	MAX LOAD (LBS)	TREAD DEPTH (IN 32NDS)	REVS/ MILE
205/60R16	92H	SL	BLT	265024760	215971	5.5 - 7.5	6.0	8.2	25.7	1,389	11	816
225/55R16	95H	SL	BLT	265024744	215943	6.0 - 8.0	7.0	9.2	25.8	1,521	11	810
225/60R16	98H	SL	BLT	265024774	219920	6.0 - 8.0	6.5	9.0	26.6	1,653	11	785
205/50R17	93H	XL	BLT	265024621	225606	5.5 - 7.5	6.5	8.4	25.1	1,433	10	832
215/55R17	98H	XL	BLT	265024759	215950	6.0 - 7.5	7.0	8.9	26.3	1,653	11	795
215/60R17	96H	SL	BLT	265024629	227940	6.0 - 7.5	6.5	8.7	27.2	1,565	11	769
225/50R17	98H	XL	BLT	265024721	215975	6.0 - 8.0	7.0	9.2	25.9	1,653	11	807
225/50R17	94H	SL	BLT	265024732	223271	6.0 - 8.0	7.0	9.2	25.9	1,477	11	807
225/55R17	97H	SL	BLT	265024757	215222	6.0 - 8.0	7.0	9.2	26.8	1,609	11	780
235/45R17	94H	SL	BLT	265024725	216177	7.5 - 9.0	8.0	9.3	25.4	1,477	10	827
235/55R17	99H	SL	BLT	265024742	208495	6.5 - 8.5	7.5	9.7	27.2	1,709	11	768
235/55R17	103V	XL	BLT	265024672	214409	6.5 - 8.5	7.5	9.7	27.2	1,929	11	768
235/65R17	108H	SL	BSW	265024667	203053	6.5 - 8.5	7.0	9.5	29.1	2,205	11	720
235/65R17	104H	SL	BLT	265024628	223451	6.5 - 8.5	7.0	9.5	29.1	1,984	11	719
245/45R17	99H	XL	BLT	265024724	216176	7.5 - 9.0	8.0	9.6	25.7	1,709	10	814
245/45R17	99V	XL	BLT	265024764	217584	7.5 - 9.0	8.0	9.6	25.7	1,709	10	814
255/45R17	98V	SL	BSW	265024718	212593	8.0 - 9.5	8.5	10.0	26.1	1,653	8	801
225/45R18	95V	XL	BLT	265024762	217582	7.0 - 8.5	7.5	8.9	25.9	1,521	11	806
225/50R18	99H	XL	BLT	265024726	220044	6.0 - 8.0	7.0	9.2	26.9	1,709	11	777
235/40R18	95W	XL	BLT	265024620	206345	8.0 - 9.5	8.5	9.5	25.4	1,521	10	823
235/40R18	95V	XL	BSW	265024765	217585	8.0 - 9.5	8.5	9.5	25.4	1,521	10	823
235/45R18	98H	XL	BLT	265024776	219931	7.5 - 9.0	8.0	9.3	26.3	1,653	10	792
235/45R18	94V	SL	BLT	265024747	223925	7.5 - 9.0	8.0	9.3	26.3	1,477	10	794
245/40R18	97V	XL	BLT	265024758	215949	8.0 - 9.5	8.5	9.8	25.7	1,609	10	813
255/40R18	95V	SL	BLT	265024719	212594	8.5 - 10.0	9.0	10.2	26.0	1,521	10	803
255/55R18	109V	XL	BLT	265024767	217587	7.0 - 9.0	8.0	10.4	29.0	2,271	10	720
255/55R18	105H	SL	BLT	265024625	220320	7.0 - 9.0	8.0	10.4	29.0	2,039	10	720
265/45R18	101V	SL	BLT	265024748	223926	8.5 - 10.0	9.0	10.5	27.4	1,819	10	764
285/35R18	101W	XL	BLT	265024730	220029	9.5 - 11.0	10.0	11.4	25.9	1,819	10	807
235/35R19	91W	SL	BLT	265024623	206324	8.0 - 9.5	8.5	9.5	25.5	1,356	10	820
235/40R19	96V	XL	BLT	265024619	224592	8.0 - 9.5	8.5	9.5	26.4	1,565	10	791
235/45R19	99V	XL	BLT	265024727	220045	7.5 - 9.0	8.0	9.3	27.4	1,709	11	763
235/50R19	99H	SL	BLT	265024720	215661	6.5 - 8.5	7.5	9.7	28.3	1,709	10	739
235/50R19	103H	XL	BLT	265024768	217664	6.5 - 8.5	7.5	9.7	28.3	1,929	10	739
235/55R19	101V	SL	BLT	265024777	219932	6.5 - 8.5	7.5	9.7	29.2	1,819	10	716
245/45R19	102V	XL	BLT	265024617	221974	7.5 - 9.0	8.0	9.6	27.7	1,874	10	755
255/35R19	96V	XL	BLT	265024766	217586	8.5 - 10.0	9.0	10.2	26.0	1,565	10	803
255/50R19	107H	XL	BLT	265024626	220371	7.0 - 9.0	8.0	10.4	29.1	2,149	11	718
265/50R19	110V	XL	BLT	265024770	217666	7.5 - 9.5	8.5	10.9	29.5	2,337	10	709
295/30R19	100W	XL	BLT	265024624	206325	10.0 - 11.0	10.5	11.9	26.0	1,764	10	804
255/35R20	97W	XL	BLT	265024731	222494	8.5 - 10.0	9.0	10.2	27.0	1,609	10	774
255/35R20	97V	XL	BLT	265024733	225834	8.5 - 10.0	9.0	10.2	27.0	1,609	9	773
255/45R20	101V	SL	BLT	265024627	221471	8.0 - 9.5	8.5	10.0	29.1	1,819	10	719
265/35R20	99V	XL	BLT	265024728	220046	9.0 - 10.5	9.5	10.7	27.3	1,709	10	765
265/40R20	104V	XL	BLT	265024769	217665	9.0 - 10.5	9.5	10.7	28.4	1,984	10	737
275/30R20	97W	XL	BLT	265024772	219917	9.0 - 10.0	9.5	10.9	26.5	1,609	10	788
275/45R20	110V	XL	BLT	265024771	217733	8.5 - 10.5	9.0	10.7	29.8	2,337	10	702
275/35R21	103W	XL	BLT	265024618	222512	9.0 - 11.0	9.0	10.9	28.5	1,929	10	732
SP WINTER SPORT 3D R0F												
175/60R16	86H	XL	BLT	265025062	226981	5.0 - 6.0	5.0	7.0	24.3	1,168	11	862
195/55R16	87H	SL	BLT	265025052	220485	5.5 - 7.0	6.0	7.9	24.4	1,201	11	856
185/50R17	86H	XL	BLT	265025057	214427	5.0 - 6.5	6.0	7.5	24.3	1,168	10	860
225/55R17	97H	SL	BLT	265025059	217732	6.0 - 8.0	7.0	9.2	26.8	1,609	11	780
225/60R17	99H	SL	BLT	265025060	219247	6.0 - 8.0	6.5	9.0	27.6	1,709	10	756
245/45R18	100V	XL	BLT	265025058	217525	7.5 - 9.0	8.0	9.6	26.7	1,764	10	784
245/50R18	100H	SL	BLT	265025056	204617	7.0 - 8.5	7.5	10.0	27.7	1,764	10	755
245/45R19	102V	XL	BLT	265025051	210622	7.5 - 9.0	8.0	9.6	27.7	1,874	10	755

Do not attempt to mount 16" rim diameter tires on 16.5" rim diameter wheels; this may result in serious injury or death.



SP[®] WINTER SPORT M3

(Select sizes with DSST[®] ROF[†])

A Winter Performance Tire, OE-Approved for
Some of the World's Finest Vehicles

FEATURES

Directional tread pattern and high-density sipes

Max Flange Shield[®] (on select sizes)

Dunlop[®] Self-Supporting Technology (DSST)^{†*}

BENEFITS

Help handling in adverse winter conditions

Helps protect rims from accidental curb damage

Sidewall construction to help allow continued driving on a flat tire for up to 50 miles at 50 mph in normal conditions

SP WINTER SPORT M3 SPECIFICATIONS

SIZE	SERVICE DESCRIPTION	LOAD RANGE	SIDEWALL	PRODUCT CODE	MATERIAL NUMBER	APPROVED RIM WIDTH (INS)	MEASURING RIM WIDTH (INS)	SECTION WIDTH (INS)	OVERALL DIAMETER (INS)	MAX LOAD (LBS)	TREAD DEPTH (IN 32NDS)	REVS/MILE
215/60R16	95H	SL	BSW	264038861	193508	6.0 - 7.5	6.5	8.7	26.1	1,521	11	801
275/35R19	96V	SL	BLT	264038824	225597	9.0 - 11.0	9.5	10.9	26.6	1,565	11	786
SP WINTER SPORT M3 DSST ROF												
205/55R16	91H	SL	BSW	264025855	201720	5.5 - 7.5	6.5	8.4	24.9	1,356	11	839
225/50R17	94H	SL	BSW	264025850	201719	6.0 - 8.0	7.0	9.2	25.9	1,477	11	807

Do not attempt to mount 16" rim diameter tires on 16.5" rim diameter wheels; this may result in serious injury or death.



[†] Refer to the run-flat owner's manual/limited warranty recommendations on operation at low or no air pressure. Tire pressure monitoring system required. Sold separately.

* Only on SP Winter Sport M3 DSST ROF.



WINTER MAXX®

(Select sizes with ROF†)

Excellent Ice Grip for Passenger Vehicles



FEATURES

Maxx Sharp Edge with Miura-Ori Sipes

Nano-Fit Rubber

Wide grooves and lugs

Asymmetric tread design

BENEFITS

Higher blade density helps prevent block distortion and increase tread-to-ice contact

Combines flexibility and rigidity to help rubber tread adhere to the ice surface

Help improve snow traction and wet handling

Helps enhance handling in snow, wet and dry conditions



Severe Snow



Ice Traction



Ultra Wet
Traction



Cornering
Stability

† Refer to the run-flat owner's manual/limited warranty recommendations on operation at low or no air pressure. Tire pressure monitoring system required. Sold separately.

WINTER MAXX SPECIFICATIONS

SIZE	SERVICE DESCRIPTION	LOAD RANGE	SIDEWALL	PRODUCT CODE	MATERIAL NUMBER	APPROVED RIM WIDTH (INS)	MEASURING RIM WIDTH (INS)	SECTION WIDTH (INS)	OVERALL DIAMETER (INS)	MAX LOAD (LBS)	TREAD DEPTH (IN 32NDS)	REVS/ MILE
175/70R13	82T	SL	BSW	266029700	225467	4.5 - 6.0	5.0	7.0	22.7	1,047	11	921
175/65R14	82T	SL	BSW	266029703	225470	5.0 - 6.0	5.0	7.0	23.0	1,047	11	910
175/65R14	79S	SL	BSW	266029746	230332	5.0 - 6.0	5.0	7.0	23.0	963	11	910
175/70R14	84T	SL	BSW	266029701	225468	4.5 - 6.0	5.0	7.0	23.7	1,102	11	882
185/60R14	82T	SL	BSW	266029705	225472	5.0 - 6.5	5.5	7.5	22.8	1,047	11	917
185/65R14	86T	SL	BSW	266029704	225471	5.0 - 6.5	5.5	7.4	23.5	1,168	11	889
185/70R14	88T	SL	BSW	266029702	225469	4.5 - 6.0	5.5	7.4	24.3	1,235	11	860
175/65R15	84T	SL	BSW	266029708	225475	5.0 - 6.0	5.0	7.0	24.0	1,102	11	871
185/55R15	82T	SL	BSW	266029714	225481	5.0 - 6.5	5.0	7.6	23.0	1,047	11	908
185/60R15	84T	SL	BSW	266029712	225479	5.0 - 6.5	5.5	7.5	23.8	1,102	11	880
185/65R15	88T	SL	BSW	266029709	225476	5.0 - 6.5	5.5	7.4	24.5	1,235	11	855
195/55R15	85T	SL	BSW	266029715	225482	5.5 - 7.0	6.0	7.9	23.4	1,135	11	892
195/60R15	88T	SL	BSW	266029713	225480	5.5 - 7.0	6.0	7.9	24.2	1,235	11	864
195/65R15	91T	SL	BSW	266029710	225477	5.5 - 7.0	6.0	7.9	25.0	1,356	11	836
205/65R15	94T	SL	BSW	266029711	225478	5.5 - 7.5	6.0	8.3	25.5	1,477	11	820
205/70R15	96T	SL	BSW	266029706	225473	5.0 - 7.0	6.0	8.2	26.3	1,565	11	795
215/70R15	98T	SL	BSW	266029707	225474	5.5 - 7.0	6.5	8.7	26.9	1,653	11	777
185/55R16	83T	SL	BSW	266029721	225488	5.0 - 6.5	6.0	7.6	24.2	1,074	11	870
195/55R16	91T	XL	BSW	266029722	225489	5.5 - 7.0	6.0	7.9	24.4	1,356	11	856
205/55R16	94T	XL	BSW	266029723	225490	5.5 - 7.5	6.5	8.4	24.9	1,477	11	840
205/60R16	96T	XL	BSW	266029718	225485	5.5 - 7.5	6.0	8.2	25.7	1,565	11	813
205/65R16	95T	SL	BSW	266029716	225483	5.5 - 7.5	6.0	8.2	26.5	1,521	11	820
215/55R16	97T	XL	BSW	266029724	225491	6.0 - 7.5	7.0	8.9	25.3	1,609	11	827
215/60R16	99T	XL	BSW	266029719	225486	6.0 - 7.5	6.5	8.7	26.1	1,709	11	801
215/65R16	98T	SL	BSW	266029717	225484	6.0 - 7.5	6.5	8.7	27.0	1,653	11	774
225/55R16	99T	XL	BSW	266029725	225397	6.0 - 8.0	7.0	9.2	25.8	1,709	11	811
225/60R16	102T	XL	BSW	266029720	225487	6.0 - 8.0	6.5	9.0	26.6	1,874	11	786
205/50R17	93T	XL	BSW	266029729	225501	5.5 - 7.5	6.5	8.4	25.1	1,433	11	832
215/45R17	91T	XL	BSW	266029732	225504	7.0 - 8.0	7.0	8.4	24.7	1,356	11	846
215/50R17	95T	XL	BSW	266029730	225502	6.0 - 7.5	7.0	8.9	25.5	1,521	11	820
215/55R17	94T	SL	BSW	266029727	225399	6.0 - 7.5	7.0	8.9	26.3	1,477	11	768
215/60R17	96T	SL	BSW	266029726	225398	6.0 - 7.5	6.5	8.7	27.2	1,565	11	769
225/45R17	94T	XL	BSW	266029733	225505	7.0 - 8.5	7.5	8.9	25.0	1,477	11	837
225/50R17	98T	XL	BSW	266029731	225503	6.0 - 8.0	7.0	9.2	25.9	1,653	11	807
225/55R17	101T	XL	BSW	266029728	225400	6.0 - 8.0	7.0	9.2	26.8	1,819	11	781
235/45R17	97T	XL	BSW	266029734	225506	7.5 - 9.0	8.0	9.3	25.4	1,609	11	824
245/45R17	99T	XL	BSW	266029735	225507	7.5 - 9.0	8.0	9.6	25.7	1,709	12	814
215/45R18	93T	XL	BSW	266029738	225510	7.0 - 8.0	7.0	8.4	25.6	1,433	11	815
225/40R18	92T	XL	BSW	266029742	225514	7.5 - 9.0	8.0	9.1	25.1	1,389	11	833
225/45R18	95T	XL	BSW	266029739	225511	7.0 - 8.5	7.5	8.9	25.9	1,521	11	807
225/55R18	98T	SL	BSW	266029736	225508	6.0 - 8.0	7.0	9.2	27.8	1,653	11	752
235/50R18	101T	XL	BSW	266029737	225509	6.5 - 8.5	7.5	9.7	27.3	1,819	11	766
245/40R18	97T	XL	BSW	266029743	225515	8.0 - 9.5	8.5	9.8	25.7	1,609	12	812
245/45R18	100T	XL	BSW	266029740	225512	7.5 - 9.0	8.0	9.6	26.7	1,764	12	784
255/45R18	103T	XL	BSW	266029741	225513	8.0 - 9.5	8.5	10.0	27.1	1,929	12	771
245/45R19	98T	SL	BSW	266029744	225516	7.5 - 9.0	8.0	9.6	27.7	1,653	12	755
WINTER MAXX ROF												
245/40R19	94W	SL	BSW	266029745	226568	8.0 - 9.5	8.5	9.8	26.9	1,477	12	782

Do not attempt to mount 16" rim diameter tires on 16.5" rim diameter wheels; this may result in serious injury or death.

WINTER MAXX[®] SJ8

Strong Ice and Snow Performance



FEATURES

Nano-Fit Rubber

Maxx Sharp Edge with Miura-Ori Sipes

Optimal groove patterns

BENEFITS

Combines flexibility and rigidity to help rubber tread adhere to ice surface

Offers higher blade density to help prevent block distortion and increase tread-to-ice contact

Enhance grip on snow surface and help performance in wet conditions



Severe Snow



Ice Traction



Ultra Wet
Traction



Cornering
Stability

WINTER MAXX SJ8 SPECIFICATIONS

SIZE	SERVICE DESCRIPTION	LOAD RANGE	SIDEWALL	PRODUCT CODE	MATERIAL NUMBER	APPROVED RIM WIDTH (INS)	MEASURING RIM WIDTH (INS)	SECTION WIDTH (INS)	OVERALL DIAMETER (INS)	MAX LOAD (LBS)	TREAD DEPTH (IN 32NDS)	REVS/ MILE
215/65R16	98R	SL	BSW	290124106	230047	6.0 - 7.5	6.5	8.7	27.0	1,653	14	774
215/70R16	100R	SL	BSW	290124101	230042	5.5 - 7.0	6.5	8.7	27.9	1,764	14	749
225/70R16	103R	SL	BSW	290124102	230043	6.0 - 7.5	6.5	9.0	28.4	1,929	14	735
225/75R16	104R	SL	BSW	290124100	230041	6.0 - 7.5	6.0	8.8	29.3	1,984	14	714
235/60R16	100R	SL	BSW	290124107	230048	6.5 - 8.5	7.0	9.5	27.1	1,764	14	772
235/70R16	106R	SL	BSW	290124103	230044	6.0 - 8.0	7.0	9.5	29.0	2,094	14	721
245/70R16	107R	SL	BSW	290124104	230045	6.5 - 8.0	7.0	9.8	29.5	2,149	14	708
245/75R16	111R	SL	BSW	290124133	232398	6.5 - 8.0	7.0	9.8	30.5	2,403	14	685
265/70R16	112R	SL	BSW	290124105	230046	7.0 - 9.0	8.0	10.7	30.6	2,469	14	682
215/60R17	96R	SL	BSW	290124112	230053	6.0 - 8.0	6.5	9.0	27.6	1,565	14	756
225/55R17	97R	SL	BSW	290124115	230056	6.0 - 8.0	7.0	9.2	28.8	1,609	14	781
225/60R17	99R	SL	BSW	290124113	230054	6.0 - 8.0	6.5	9.0	27.6	1,709	14	756
225/65R17	102R	SL	BSW	290124108	230049	6.0 - 8.0	6.5	9.0	28.5	1,874	14	733
235/55R17	99R	SL	BSW	290124116	230057	6.5 - 8.5	7.5	9.7	27.2	1,709	14	769
235/60R17	102R	SL	BSW	290124114	230055	6.5 - 8.5	7.0	9.5	28.1	1,874	14	744
235/65R17	108R	XL	BSW	290124109	230050	6.5 - 8.5	7.0	9.5	29.1	2,205	14	719
245/65R17	107R	SL	BSW	290124110	230051	7.0 - 8.5	7.0	9.8	29.5	2,149	14	708
245/70R17	110R	SL	BSW	290124134	232399	6.5 - 8.0	7.0	9.8	30.6	2,337	14	683
265/65R17	112R	SL	BSW	290124111	230052	7.5 - 9.5	8.0	10.7	30.6	2,469	14	684
265/70R17	115R	SL	BSW	290124135	232400	7.0 - 9.0	8.0	10.7	31.7	2,679	14	659
225/55R18	98R	SL	BSW	290124121	230062	6.0 - 8.0	7.0	9.2	27.8	1,653	14	753
225/60R18	100R	SL	BSW	290124138	232423	6.0 - 8.0	6.5	9.0	28.6	1,764	14	731
235/50R18	97R	SL	BSW	290124124	230065	6.5 - 8.5	7.5	9.7	27.3	1,609	14	766
235/55R18	100R	SL	BSW	290124122	230063	6.5 - 8.5	7.5	9.7	28.2	1,764	14	742
235/60R18	107R	XL	BSW	290124118	230059	6.5 - 8.5	7.0	9.5	29.1	2,149	14	718
235/65R18	106R	SL	BSW	290124117	230058	6.5 - 8.5	7.0	9.5	30.0	2,094	14	696
245/60R18	105R	SL	BSW	290124119	230060	7.0 - 8.5	7.0	9.8	29.6	2,039	14	707
255/55R18	109R	XL	BSW	290124123	230064	7.0 - 9.0	8.0	10.4	29.0	2,271	14	720
265/60R18	110R	SL	BSW	290124120	230061	7.5 - 9.5	8.0	10.7	30.5	2,337	14	685
265/65R18	114R	SL	BSW	290124136	232421	7.5 - 9.5	8.0	10.7	31.5	2,601	14	663
275/65R18	116R	SL	BSW	290124137	232422	7.5 - 9.5	8.0	11.0	32.1	2,756	14	651
235/55R19	101R	SL	BSW	290124125	230066	6.5 - 8.5	7.5	9.7	29.2	1,819	14	716
245/55R19	103R	SL	BSW	290124126	230067	7.0 - 8.5	7.5	10.0	29.7	1,929	14	705
255/50R19	107R	XL	BSW	290124127	230068	7.0 - 9.0	8.0	10.4	29.1	2,149	14	718
245/50R20	102R	SL	BSW	290124128	230069	7.0 - 8.5	7.5	10.0	29.7	1,874	14	704
255/50R20	109R	XL	BSW	290124129	230070	7.0 - 9.0	8.0	10.9	30.1	2,271	14	695
265/50R20	107R	SL	BSW	290124130	230071	7.5 - 9.5	8.5	10.9	30.5	2,149	14	686
275/55R20	113R	SL	BSW	290124140	232425	7.5 - 9.5	8.5	11.2	31.9	2,535	14	655
275/60R20	115R	SL	BSW	290124139	232424	7.5 - 9.5	8.0	11.0	33.0	2,679	14	633
285/50R20	112R	SL	BSW	290124131	230072	8.0 - 10.0	9.0	11.7	31.3	2,469	14	669
275/50R21	113R	XL	BSW	290124132	230942	7.5 - 9.5	8.5	11.2	31.9	2,535	14	655

Do not attempt to mount 16" rim diameter tires on 16.5" rim diameter wheels; this may result in serious injury or death.



GRANDTREK® SJ6

Powerful Traction on Ice and Snow



FEATURES

Zigzag grooves in the center create strong twin snow pillars

Optimized groove distribution and tread design

Special glass fiber-reinforced tread

Optimized mold shape and ply line

Special tread design

Stylish sidewall design

BENEFITS

Help provide powerful traction and braking in snowy conditions

Help provide quiet ride on dry road conditions and even wear

Helps provide outstanding grip on ice

Help provide consistent contact patch at highway speeds

Creates a wide footprint to help provide enhanced grip on ice and longer life

Great appearance



Severe Snow



Ice Traction



Ultra Wet Traction



Cornering Stability

GRANDTREK SJ6 SPECIFICATIONS

SIZE	SERVICE DESCRIPTION	LOAD RANGE	SIDEWALL	PRODUCT CODE	MATERIAL NUMBER	APPROVED RIM WIDTH (INS)	MEASURING RIM WIDTH (INS)	SECTION WIDTH (INS)	OVERALL DIAMETER (INS)	MAX LOAD (LBS)	TREAD DEPTH (IN 32NDS)	REVS/ MILE
205/70R15	95Q	SL	BSW	290126540	198331	5.0 - 7.0	6.0	8.2	26.3	1,521	14	795
215/70R15	98Q	SL	BSW	290126510	198339	5.5 - 7.0	6.5	8.7	26.9	1,653	14	777
225/70R15	100Q	SL	BSW	290126593	198341	6.0 - 7.5	6.5	9.0	27.4	1,764	14	763
235/70R15	103Q	SL	BSW	291120814	193447	6.0 - 8.0	7.0	9.5	28.0	1,929	14	746
265/70R15	110Q	SL	BSW	291120820	193448	7.0 - 9.0	8.0	10.7	29.7	2,337	15	704
205/70R16	97Q	SL	BSW	290126541	198338	5.0 - 7.0	6.0	8.2	27.3	1,609	14	766
215/65R16	98Q	SL	BLT	291120832	193462	6.0 - 7.5	6.5	8.7	27.0	1,653	14	774
215/70R16	99Q	SL	BSW	291120822	193449	5.5 - 7.0	6.5	8.7	27.9	1,709	14	749
* 235/70R16	105Q	SL	BSW	290126599	198344	6.0 - 8.0	7.0	9.5	29.0	2,039	14	721
* 245/70R16	107Q	SL	BSW	291120810	190900	6.5 - 8.0	7.0	9.8	29.5	2,149	14	708
245/75R16	111Q	SL	BSL	291120833	223572	6.5 - 8.0	7.0	9.8	30.5	2,403	14	686
255/65R16	109Q	SL	BSW	290126579	198345	7.0 - 9.0	7.5	10.2	29.1	2,271	14	718
255/70R16	109Q	SL	BSW	290126586	198346	6.5 - 8.5	7.5	10.2	30.1	2,271	14	695
265/70R16	112Q	SL	BSW	291120828	193450	7.0 - 9.0	8.0	10.7	30.6	2,469	15	682
* 225/60R17	99Q	SL	BSW	291120812	190901	6.0 - 8.0	6.5	9.0	27.6	1,708	14	757
* 235/65R17	104Q	SL	BSW	290126509	198343	6.5 - 8.5	7.0	9.5	29.1	1,984	14	718
265/70R17	115Q	SL	BSL	291120834	223573	7.0 - 9.0	8.0	10.7	31.7	2,679	15	660
275/65R17	115Q	SL	BSW	291120815	226425	7.5 - 9.5	8.0	11.0	31.1	2,679	15	672
* 235/60R18	107Q	XL	BSL	291120839	223578	6.5 - 8.5	7.0	9.5	29.1	2,149	14	718
* 255/55R18	109Q	XL	BSL	291120841	223580	7.0 - 9.0	8.0	10.4	29.0	2,271	14	720
* 245/55R19	103Q	SL	BSL	291120842	223581	7.0 - 7.5	8.0	10.0	29.7	1,929	14	705
255/60R19	109Q	SL	BSL	291120837	223576	7.0 - 9.0	7.5	10.2	31.1	2,271	14	672

*Discontinued 2016.

Do not attempt to mount 16" rim diameter tires on 16.5" rim diameter wheels; this may result in serious injury or death.

Always maintain tire inflation pressure at levels recommended by the vehicle manufacturer as shown on the vehicle placard or in the owner's manual.



GRANDTREK® WT M3

(Select sizes with DSST® ROF†)

Winter Performance Tire for Luxury SUVs



FEATURES

High-performance winter traction

Directional tread pattern with high-density sipes

Lateral zigzag sipes and independent tread blocks

High-density sipes and increased contact area

Dunlop® Self-Supporting Technology (DSST)†

BENEFITS

Powerful traction for all weather conditions

Handling in winter conditions

Help bite through ice and snow

Enhance ice grip and tread life

Sidewall construction to help allow continued driving on a flat tire for up to 50 miles at 50 mph in normal conditions



Severe Snow



Ice Traction



Cornering
Stability



Steering
Responsiveness

† Refer to the run-flat owner's manual/limited warranty recommendations on operation at low or no air pressure. Tire pressure monitoring system required. Sold separately.

GRANDTREK WT M3 SPECIFICATIONS

SIZE	SERVICE DESCRIPTION	LOAD RANGE	SIDEWALL	PRODUCT CODE	MATERIAL NUMBER	APPROVED RIM WIDTH (INS)	MEASURING RIM WIDTH (INS)	SECTION WIDTH (INS)	OVERALL DIAMETER (INS)	MAX LOAD (LBS)	TREAD DEPTH (IN 32NDS)	REVS/MILE
255/50R19	107V	XL	BSW	291121926	202650	7.0 - 9.0	8.0	10.4	29.1	2,149	11	718
265/55R19	109H	SL	BLT	291121927	231341	7.5 - 9.5	8.5	10.9	30.5	2,271	11	685
275/45R20	110V	XL	BLT	291121936	201956	8.5 - 10.5	9.0	10.7	29.8	2,337	11	702
GRANDTREK WT M3 DSST ROF												
255/55R18	109H	XL	BSW	290122296	201954	7.0 - 9.0	8.0	10.4	29.0	2,271	11	720

Always maintain tire inflation pressure at levels recommended by the vehicle manufacturer as shown on the vehicle placard or in the owner's manual.



LT/SUV

SP LT 60

Excellent Rain, Snow and Mud Traction for Winter Conditions

SP LT 60 SPECIFICATIONS

SIZE	SERVICE DESCRIPTION	LOAD RANGE	SIDEWALL	PRODUCT CODE	MATERIAL NUMBER	APPROVED RIM WIDTH (INS)	MEASURING RIM WIDTH (INS)	SECTION WIDTH (INS)	OVERALL DIAMETER (INS)	MAX LOAD (LBS)	TREAD DEPTH (IN 32NDS)	REVS/ MILE
205/65R15	102T	SL	BLT	291105050	229716	5.5 - 7.5	6.0	8.2	25.5	1,875	12	821

Always maintain tire inflation pressure at levels recommended by the vehicle manufacturer as shown on the vehicle placard or in the owner's manual.

DSX DSST® ROF

DSX DSST ROF SPECIFICATIONS

SIZE	SERVICE DESCRIPTION	LOAD RANGE	SIDEWALL	PRODUCT CODE	MATERIAL NUMBER	APPROVED RIM WIDTH (INS)	MEASURING RIM WIDTH (INS)	SECTION WIDTH (INS)	OVERALL DIAMETER (INS)	MAX LOAD (LBS)	TREAD DEPTH (IN 32NDS)	REVS/MILE
255/40RF20	97Q	SL	BSW	265029200	224602	8.5 - 10.0	9.0	10.2	28.2	1,609	11	746
285/35RF20	100Q	SL	BSW	265029201	224603	9.5 - 11.0	10.0	11.4	28.1	1,764	11	750

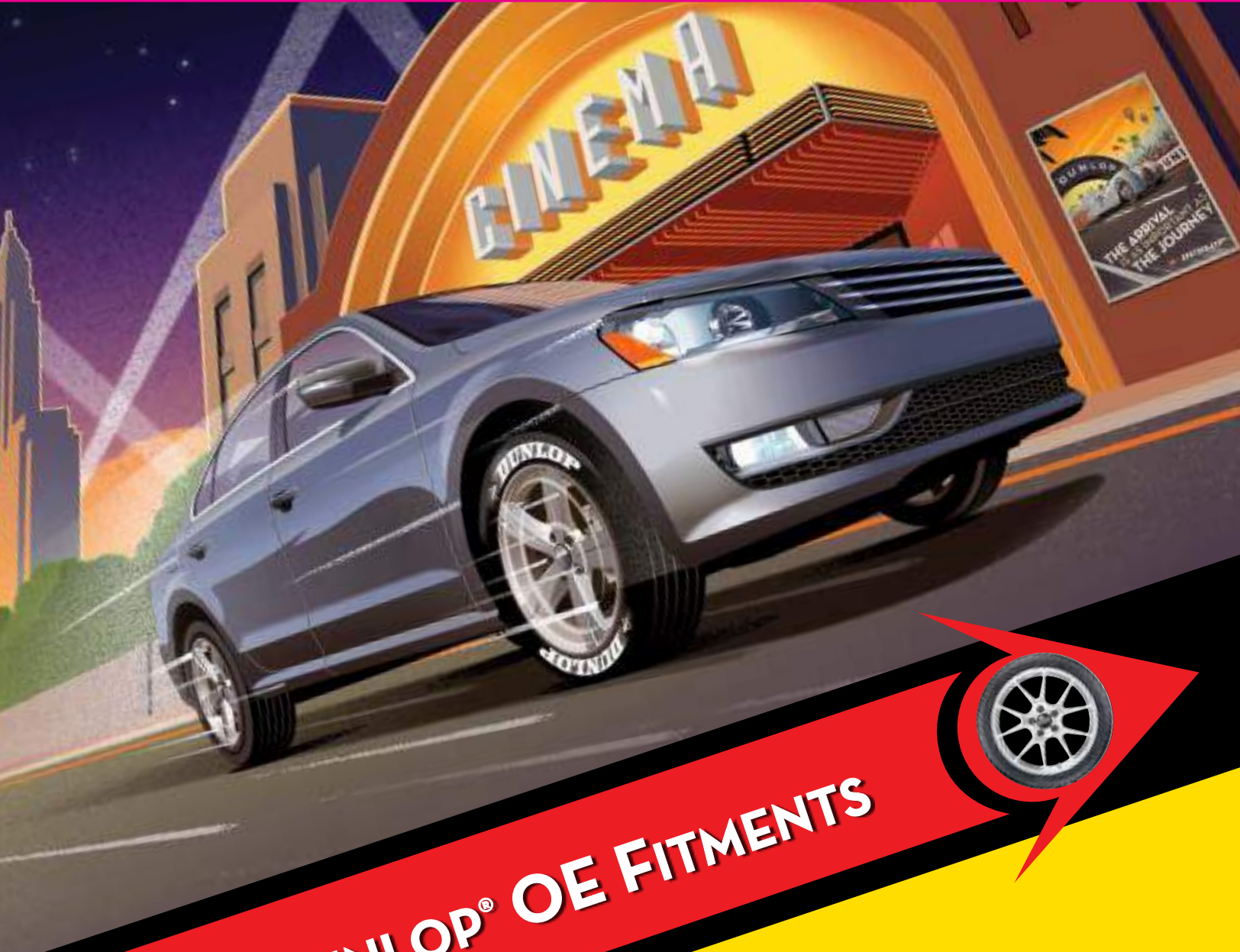
Always maintain tire inflation pressure at levels recommended by the vehicle manufacturer as shown on the vehicle placard or in the owner's manual.



Severe Snow



Ice Traction



2017 DUNLOP® OE FITMENTS

The Right Style

Having Dunlop tires is a statement that says you care about the way your tires make your car look as much as you care about its performance aspects.

Many vehicle manufacturers realize this about Dunlop tires and have them as original equipment on premium brands like Lexus and Porsche. Customers who value style and performance will often use Dunlop for replacement tires, so the following charts are intended to help you help them make the right choice.



2017 DUNLOP® OE FITMENTS

OE FITMENT GUIDE

Dunlop®. Original Equipment Fitments to Drive Shopper Traffic.

OE fitments are the reason why consumers will come knocking on your door. With fitments on the most desired models from many of the world's major manufacturers, Dunlop is the right brand for car, truck and sport utility vehicle owners.



VEHICLE MAKE	VEHICLE MODEL	TIRE SIZE SERVICE DESCR.	PRODUCT CODE	TIRE LINE	SIDEWALL DESCRIPTION	VEHICLE MODEL YEAR				
						2013	2014	2015	2016	2017
AUDI										
AUDI	A4	225/50R17 94Y	265022345	SP SPORT 01	BLT	X	X	X		
		245/45R17 95H	265026242	SP SPORT 01 A/S DSST ROF	BSW	X	X			
		245/45ZR17 95Y	265023800	SP SPORT MAXX GT	BLT	X	X			
		245/40ZR18 93Y	265023784	SP SPORT MAXX GT	BSW	X	X	X		
	A5	255/35ZR19 96Y	265023782	SP SPORT MAXX GT	BSW	X	X	X		
		265/30ZR20 94Y XL	265023794	SP SPORT MAXX GT	BLT	X	X			
	A6	245/45R17 95H	265026242	SP SPORT 01 A/S DSST ROF	BSW	X	X			
	A7	265/35R20 99Y XL	265023812	SP SPORT MAXX GT	BLT	X	X	X	X	X
	A8	275/35ZR21 103Y XL	265023825	SP SPORT MAXX GT	BLT	X	X	X	X	X
	Q5	235/65R17 104W	265022346	SP SPORT MAXX GT	BLT	X	X		X	X
		235/60R18 103H	290123506	GRANDTREK TOURING A/S	BLT	X	X	X	X	X
		255/45R20 101W	265023783	SP SPORT MAXX GT	BLT	X	X			
	Q7	295/35ZR21 107Y XL	265023776	SP SPORT MAXX	BSW	X	X	X		
	TT	245/45R17 95V	265026241	SP SPORT 01 A/S	BLT	X	X	X		
245/40R18 93H		265026640	SP SPORT 01 A/S DSST ROF	BSW	X	X	X			
BENTLEY										
BENTLEY	MULSANNE	265/45ZR20 108Y (F)	265023805	SP SPORT MAXX GT B	BLT	X	X	X	X	X
		265/40ZR21 105Y (R)	265023806	SP SPORT MAXX GT B	BLT	X	X	X	X	X
BMW										
BMW	1 SERIES	215/40R18 85Y (F)	265025660	SP SPORT 01 DSST	BLT	X				
		245/35R18 88Y (R)	265025654	SP SPORT 01 DSST	BLT	X				
	1 SERIES / 2 SERIES	225/45R17 91W (F)	263027240	SP SPORT MAXX TT DSST	BLT					X
		245/40R17 91W (R)	263027241	SP SPORT MAXX GT ROF	BLT					X
		245/40R17 88Y (F)	265027416	SP SPORT MAXX GT ROF	BLT					X
		245/30R19 89Y (R)	265027417	SP SPORT MAXX GT ROF	BLT					X
	2 SERIES	225/45R17 91W (F)	263027240	SP SPORT MAXX TT DSST	BLT				X	
		245/40R17 91W (R)	263027241	SP SPORT MAXX GT ROF	BLT				X	
		245/40R17 88Y (F)	265027416	SP SPORT MAXX GT ROF	BLT				X	
		245/30R19 89Y (R)	265027417	SP SPORT MAXX GT ROF	BLT				X	
	3 SERIES	225/35R20 90Y (F)	265027408	SP SPORT MAXX GT ROF	BLT				X	X
		225/30R20 92Y (R)	265027409	SP SPORT MAXX GT ROF	BLT				X	X
	5 SERIES / 6 SERIES	245/45R18 96Y (F)	265027403	SP SPORT MAXX GT DSST ROF	BLT	X			X	X
		275/40R18 99Y (R)	265027404	SP SPORT MAXX GT DSST ROF	BLT	X			X	X
		245/40R19 94Y (F)	265023807	SP SPORT MAXX GT DSST ROF	BLT				X	X
		275/35R19 96Y (R)	265023808	SP SPORT MAXX GT DSST ROF	BLT				X	X
		245/35R20 95Y XL (F)	265027405	SP SPORT MAXX GT DSST ROF	BLT	X			X	X
		275/30R20 97Y XL (R)	265027406	SP SPORT MAXX GT DSST ROF	BLT	X			X	X
	7 SERIES / 5 GT	245/50R18 100Y	265027400	SP SPORT MAXX GT DSST ROF	BLT	X			X	X
		245/45R19 98Y (F)	265027401	SP SPORT MAXX GT DSST ROF	BLT	X			X	X
		275/40R19 101Y (R)	265027402	SP SPORT MAXX GT DSST ROF	BLT	X			X	X
	X3	225/60R17 99V XL	263027237	SP SPORT MAXX TT DSST	BLT	X				
	X5	255/55R18 109V	265025455	SP SPORT 01 DSST	BSW	X				
		275/40R20 106W XL (F)	265026340	SP SPORT MAXX DSST ROF	BSW	X				
		315/35R20 110W XL (R)	265026336	SP SPORT MAXX DSST ROF	BSW	X				
		275/40R20 106W	265027415	SP SPORT MAXX GT ROF	BLT				X	X
		315/35R20 110W	265027414	SP SPORT MAXX GT ROF	BLT				X	X
		285/35R21 105Y XL (F)	265026337	SP SPORT MAXX DSST ROF	BLT	X				
		325/30R21 108Y XL (R)	265026338	SP SPORT MAXX DSST ROF	BLT	X				
	X6	275/40R20 106W	265027415	SP SPORT MAXX GT ROF	BLT				X	X
		315/35R20 110W	265027414	SP SPORT MAXX GT ROF	BLT				X	X
		275/40R20 106W XL (F)	265026340	SP SPORT MAXX DSST ROF	BSW	X				
		315/35R20 110W XL (R)	265026336	SP SPORT MAXX DSST ROF	BSW	X				
285/35R21 105Y XL (F)		265026337	SP SPORT MAXX DSST ROF	BLT	X					
325/30R21 108Y XL (R)	265026338	SP SPORT MAXX DSST ROF	BLT	X						
CADILLAC										
CADILLAC	ELR-V	245/40R19 99Y	265023801	SP SPORT MAXX GT	BLT				X	X
HONDA										
HONDA	CRV	P225/60R18 99H	290105035	GRANDTREK AT20	BSW			X	X	X
	CR-Z	P195/55R16 86V	265004155	SP SPORT 7000 A/S	BSW	X	X	X	X	X
	FIT	175/65R15 84S	265024568	SP 31	BSW	X	X			
		185/55R16 83H	265004140	SP SPORT 7000 A/S	BSW	X	X			
INSIGHT	175/65R15 84S	263027501	SP 31 A	BSW	X	X				
INFINITI										
INFINITI	EX35	P225/55R18 97V	265004178	SP SPORT 7000 A/S	BSW	X	X	X	X	X
	FX45	265/45R21 104W	265022321	SP SPORT 01	BSW	X	X			
	G37	P225/50R18 94V	265040722	SP SPORT MAXX A1-A/A/S	BSW	X				

VEHICLE MAKE	VEHICLE MODEL	TIRE SIZE SERVICE DESCR.	PRODUCT CODE	TIRE LINE	SIDEWALL DESCRIPTION	VEHICLE MODEL YEAR					
						2013	2014	2015	2016	2017	
INFINITI (Cont.)											
	G37 CONVERTIBLE	P225/50R18 94V (F)	265040722	SP SPORT MAXX A1-A/A/S	BSW	X	X	X	X	X	
		P245/45R18 96V (R)	265040720	SP SPORT MAXX A1-A/A/S	BSW	X	X	X	X	X	
	G37 COUPE	P225/50R18 94V (F)	265040722	SP SPORT MAXX A1-A/A/S	BSW	X	X	X	X	X	
	Q50	245/40R19 94V	265023827	SP SPORT MAXX 050 DSST CTT	BSW		X	X	X	X	
		245/40RF19 94W (F)	265031601	SP SPORT MAXX 050 DSST CTT	BSW					X	
		265/35RF19 94W (R)	265031602	SP SPORT MAXX 050 DSST CTT	BSW					X	
		P245/40R19 94V	755667383	SP SPORT 5000 A/S DSST CTT	BSW		X	X	X	X	
Q60	P255/40RF19 96V	265021145	SP SPORT 5000 DSST CTT	BSW					X		
JAGUAR											
	XF	255/35R20 97Y XL	265023939	SP SPORT MAXX	BLT	X					
	XFR	255/35ZR20 97Y XL (F)	265040735	SP SPORT MAXX	BLT	X		X			
		285/30ZR20 99Y XL (R)	265040736	SP SPORT MAXX	BLT	X		X			
LEXUS											
	GS	225/50R17 94W	265023815	SP SPORT MAXX 050	BSW	X	X	X	X	X	
		235/45R18 94Y	265023816	SP SPORT MAXX 050	BSW	X	X	X	X	X	
		P235/45R18 94V	265028100	SP SPORT 5100	BSW	X	X	X	X	X	
		235/40R19 96Y (F)	265023817	SP SPORT MAXX 050	BSW	X	X	X	X	X	
		265/35R19 94Y (R)	265023818	SP SPORT MAXX 050	BSW	X	X	X	X	X	
		T155/70D17 110M	266012170	SPACE MICER MK3	BSW			X	X	X	
		IS	225/45R17 90W (F)	265023846	SP SPORT MAXX A	BSW	X	X	X	X	
	245/45R17 95W (R)		265023847	SP SPORT MAXX A	BSW	X	X	X	X		
	225/45R17 91V (F)		265037647	SP SPORT 5000	BSW	X	X				
	245/45R17 95V (R)		265037648	SP SPORT 5000	BSW	X	X				
	225/45R17 91V		265037647	SP SPORT 5000	BSW			X	X	X	
	225/40R18 88Y (F)		265024052	SP SPORT 2050	BSW	X	X	X	X		
	255/40R18 95Y (R)		265024053	SP SPORT 2050	BSW	X	X	X	X		
	225/40R18 88Y (F)		265023772	SP SPORT MAXX A	BSW	X					
	255/40R18 95Y (R)		265023773	SP SPORT MAXX A	BSW	X					
	225/40R18 88Y (F)		265023831	SP SPORT MAXX 050	BSW		X	X	X	X	
	255/35R18 90Y (R)		265023832	SP SPORT MAXX 050	BSW		X	X	X	X	
	LS		235/50R18 97W	265040450	SP SPORT MAXX A1	BSW	X	X	X	X	
			P235/50R18 97V	265040550	SP SPORT MAXX A1 A/S	BSW	X	X	X	X	
		245/45R19 98Y	265023826	SP SPORT MAXX 050	BSW	X	X	X	X		
		P245/45R19 98V	265040745	SP SPORT MAXX A1 A/S	BSW	X	X	X	X		
		LS / LS Hybrid	235/50R18 97W	265040450	SP SPORT MAXX A1	BSW					X
	245/45R19 98Y		265023826	SP SPORT MAXX 050	BSW					X	
	P235/50R18 97V		265040550	SP SPORT MAXX A1 A/S	BSW					X	
	P245/45R19 98V		265040745	SP SPORT MAXX A1 A/S	BSW					X	
	245/45RF19 98Y		265023835	SP SPORT MAXX 050 DSST CTT	BSW					X	
	LX	P285/50R20 111V	290122310	GRANDTREK PT2A	BSW	X	X	X			
		LX570	P275/50R21 113V	290124400	GRANDTREK PT3A	BSW				X	X
	RC		235/45R18 94Y	265023816	SP SPORT MAXX 050	BSW			X	X	X
		P235/45R18 94V	265028100	SP SPORT 5100	BSW			X	X	X	
		235/40R19 96Y (F)	265023817	SP SPORT MAXX 050	BSW			X	X	X	
		265/35R19 94Y (R)	265023818	SP SPORT MAXX 050	BSW			X	X	X	
		T155/70D17 110M	266012170	SPACE MICER MK3	BSW			X	X	X	
	RX	P235/60R18 102V	290123503	GRANDTREK TOURING A/S	BSW	X	X	X	X	X	
		P235/55R19 101V	290123502	GRANDTREK TOURING A/S	VSB	X	X	X	X	X	
	MASERATI										
		QUATTROPORTE	245/45ZR19 98Y (F)	265029317	SP SPORT MAXX RT	BLT	X	X	X	X	X
			275/40ZR19 101Y (R)	265029318	SP SPORT MAXX RT	BLT	X	X	X	X	X
		GHIBLI	245/45ZR19 98Y (F)	265029317	SP SPORT MAXX RT	BLT		X	X	X	X
			275/40ZR19 101Y (R)	265029318	SP SPORT MAXX RT	BLT		X	X	X	X
	MAZDA										
		MAZDA3	T125/90D16 98M	266012187	SPACE MICER MK3	BSW				X	X
			P225/40R18 88Y	265024051	SP SPORT 2050	BSW	X				
			215/45R18 89W	265038960	SP SPORT 5000	VSB		X	X	X	X
	MAZDA6	P225/45R19 92W	265037649	SP SPORT 5000	VSB		X	X	X	X	
	MERCEDES-BENZ										
		GLK-CLASS	235/50R19 99H	290123505	GRANDTREK TOURING A/S	BLT	X				
235/45R20 100H			290123504	GRANDTREK TOURING A/S	BLT	X					
ML-CLASS		255/55R18 105H	290123508	GRANDTREK TOURING A/S	BLT	X					
		255/50R19 107H XL	290123507	GRANDTREK TOURING A/S	BLT	X					
SL-CLASS		265/45R20 104Y	265025943	SP SPORT MAXX GT	BLT	X					
		255/40R18 95W (F)	265023786	SP SPORT MAXX GT	BLT	X					
		285/35R18 97W (R)	265023787	SP SPORT MAXX GT	BLT	X					



VEHICLE MAKE	VEHICLE MODEL	TIRE SIZE SERVICE DESCR.	PRODUCT CODE	TIRE LINE	SIDEWALL DESCRIPTION	VEHICLE MODEL YEAR				
						2013	2014	2015	2016	2017
MINI										
	CLUBMAN	225/45R17 94W XL	265008003	SPORT MAXX RT2*	BLT					X
	COOPER S	205/45R17 84W	265023145	SP SPORT 01 DSST ROF	BSW	X			X	X
		205/45R17 88W	265029326	SPORT MAXX RT ROF	BLT				X	X
		205/40R18 86W	265029328	SPORT MAXX RT ROF	BLT				X	X
		175/65R15 84H	265040300	SPORT BLUERESPONSE	BLT				X	X
	PACEMAN	205/55R17 91V	265029500	SP SPORT FAST RESPONSE	BLT				X	X
MITSUBISHI										
	iMIEV	145/65R15 72H (F)	267028900	ENASAVE 01	BSW	X	X	X	X	X
		175/60R15 81H (R)	267028901	ENASAVE 01	BSW	X	X	X	X	X
	LANCER	P215/45R18 89V	265025145	SP SPORT 5000M	BSW	X	X	X	X	X
	MIRAGE	165/65R14 79S	267028902	ENASAVE 01 A/S	VSB		X	X	X	X
	OUTLANDER	P215/70R16 99H	290139031	GRANDTREK ST20	VSB		X	X	X	
		225/55R18 98H	265037658	SP SPORT 5000	VSB					X
NISSAN										
	ALTIMA	P235/45R18 94V	265027900	SP SPORT 7000 A/S	BSW	X	X	X	X	X
	ARMADA	265/70R18 116H	290014826	GRANDTREK AT23	BSW					X
	GT-R	255/40ZRF20 97Y (F)	265027073	SP SPORT 600 DSST	BSW	X	X	X		
		285/35ZRF20 100Y (R)	265027044	SP SPORT 600 DSST	BSW	X	X	X		
		255/40RF20 97W (F)	265039947	SP SPORT 7010 DSST A/S	BSW	X	X	X	X	X
		285/35RF20 100W (R)	265039946	SP SPORT 7010 DSST A/S	BSW	X	X	X	X	X
		255/40ZRF20 97Y (F)	265028803	SP SPORT 600 DSST CTT	BSW				X	
		285/35ZRF20 100Y (R)	265028804	SP SPORT 600 DSST CTT	BSW				X	
		255/40ZRF20 97Y (F)	265028803	SP SPORT 600 DSST CTT	BSW					X
		285/35ZRF20 100Y (R)	265028804	SP SPORT 600 DSST CTT	BSW					X
	GT-R NISMO	255/40ZRF20 97Y (F)	265028801	SP SPORT 600 DSST CTT	BSW				X	
		285/35ZRF20 100Y (R)	265028800	SP SPORT 600 DSST CTT	BSW				X	
		255/40ZRF20 97Y (F)	265028801	SP SPORT 600 DSST CTT	BSW					X
	ROGUE	285/35ZRF20 100Y (R)	265028800	SP SPORT 600 DSST CTT	BSW					X
		225/65R17 102H	290126785	GRANDTREK ST30	VSB					X
		P225/60R17 98H	290139030	GRANDTREK ST20	BSW	X				
	ROGUE HYBRID	225/60R18 100H	290126787	GRANDTREK ST30	BSW		X	X	X	X
		P225/55R18 97V	265004178	SP SPORT 7000 A/S	BSW	X				
		225/60R18 100H	290126788	GRANDTREK ST30	BSW					X
PORSCHE										
	BOXTER / CAYMAN	235/45ZR18 94Y (F)	265023813	SP SPORT MAXX GT	BLT		X			
		265/45ZR18 101Y (R)	265023814	SP SPORT MAXX GT	BLT		X			
SCION										
	XD	195/60R16 89H	265037601	SP SPORT 5000	BSW	X	X	X	X	X
SUBARU										
	IMPREZA	235/45R17 94W	265023344	SP SPORT 01	BSW	X	X	X		
		245/40R18 93W	265023601	SP SPORT 600	BSW	X	X	X		
	IMPREZA WRX	235/45R17 94W	265029322	SP SPORT MAXX RT	BSW				X	X
	IMPREZA WRX STI	245/40R18 97W	265029323	SP SPORT MAXX RT	BSW				X	X
SUZUKI										
	GRAND VITARA	225/60R18 100H	265025942	SP SPORT 01	BSW	X				
	KIZASHI	P215/60R16 94V	265027902	SP SPORT 7000 A/S	BSW	X				
		P215/55R17 93V	265027901	SP SPORT 7000 A/S	BSW	X				
		P235/45R18 94V	265027900	SP SPORT 7000 A/S	BSW	X				
	SX 4	P205/50R17 88V	265004150	SP SPORT 7000 A/S	BSW	X	X			
TOYOTA										
	4RUNNER	P265/70R17 113S	290105041	GRANDTREK AT20	BSW	X	X	X	X	X
	FJ CRUISER	P265/70R17 113S	290105041	GRANDTREK AT20	BSW	X	X			
	HIGHLANDER	P245/65R17 105S	290126783	GRANDTREK ST30	BSW	X	X			
	LAND CRUISER	P285/60R18 114V	290014840	GRANDTREK AT23	BSW	X	X	X		
	LAND CRUISER 200	P285/60R18 116V	290014825	GRANDTREK AT23	BSW	X	X	X	X	X
		285/50R20 112V	290122311	GRANDTREK PT2A	BSW				X	X
	NX	225/65R17 102H	290126784	GRANDTREK ST30	BSW			X	X	
	NX / NX Hybrid	225/65R17 102H	290126784	GRANDTREK ST30	BSW					X
	PRIVUS	P195/65R15 89S	267028904	ENASAVE 01 A/S	VSB					X
	RAV4	225/65R17 102H	290126784	GRANDTREK ST30	BSW	X	X	X	X	X
	RX	T165/90D18 107M	266012186	SPACE MIGER MK3	BSW				X	X
	SEQUOIA	P275/55R20 111H	265014741	SP SPORT 5000M	VSB	X	X	X	X	X
	SIENNA	P235/50R19 99V	265004190	SP SPORT 7000 A/S	VSB	X	X	X	X	X
	TACOMA	P215/70R15 97S	290105531	GRANDTREK AT20	BSL	X	X	X		
		P245/75R16 109S	290105537	GRANDTREK AT20	BSL	X	X	X		
		P265/65R17 110S	290105539	GRANDTREK AT20	BSL	X	X	X		
	TUNDRA	P275/55R20 111H	265014741	SP SPORT 5000M	VSB	X	X	X	X	X

VEHICLE MAKE	VEHICLE MODEL	TIRE SIZE SERVICE DESCR.	PRODUCT CODE	TIRE LINE	SIDEWALL DESCRIPTION	VEHICLE MODEL YEAR				
						2013	2014	2015	2016	2017
VOLKSWAGEN										
	GTI	225/40R18 92H	265026240	SP SPORT 01 A/S	BSW	X	X			
		225/40R18 92H XL	265026240	SP SPORT 01 A/S	BSW			X		
	R32	225/40R18 92H	265026240	SP SPORT 01 A/S	BSW	X				
	TIGUAN	215/65R16 98H	290123501	GRANDTREK TOURING A/S	BLT	X	X			
		255/40R19 96V	265023788	SP SPORT MAXX GT	BSW	X				