

*SEMI FAIRING*  
***BATWING SML***  
*CUSTOM MOTORCYCLES*

*CustomAcces*

*HARLEY DAVIDSON SPORSTER 883 IRON*  
*2016 -*

REF: BTM0001

*HARLEY DAVIDSON STREET 750*  
*2014 -*

REF: BMT0005

*HONDA CMX500/300 REBEL*  
*2017 -*

REF: BTM0002

*YAMAHA XV950R BOLT*  
*2017 -*

REF: BTM0004

*KAWASAKI VULCAN S*  
*2015 -*

REF: BTM0003

*CustomAcces*



*CustomAcces*



*CustomAcces*

*THE BATWING IS A TWO-PIECE KIT, THE SAMI-FAIRING IS  
MADE OUT OF 4MM ABS AND 3MM ACRYLIC VISOR*



*CustomAcces*

*THIS SEMI-FAIRING PRETEND TO REVOLUTION THE  
AESTHETICS OF THE CUSTOM MOTORCYCLES*



*CustomAcces*

A wireframe motorcycle is shown from a front-three-quarter perspective. It features a semi-fairing, two mirrors, and a central headlight. The motorcycle is rendered in a white wireframe style against a black background.

*CUSTOMACCESS GUARANTEES AN ACCESSORY  
THAT CUSTOMIZES TO YOUR TASTE*

*WETHER IT IT BY CHANGING THE COLOR OF  
YOUR SEMI-FAIRING, OR THE SIZE OF  
THE VISOR*

*CustomAcces*

*THE BATWING MATCHES THE MOST COMPLEX SHAPES  
AND ALWAYS ACCORDING TO YOUR MOTORCYCLE'S LINES*



*CustomAcces*



*BATWING SML*



*CustomAcces*

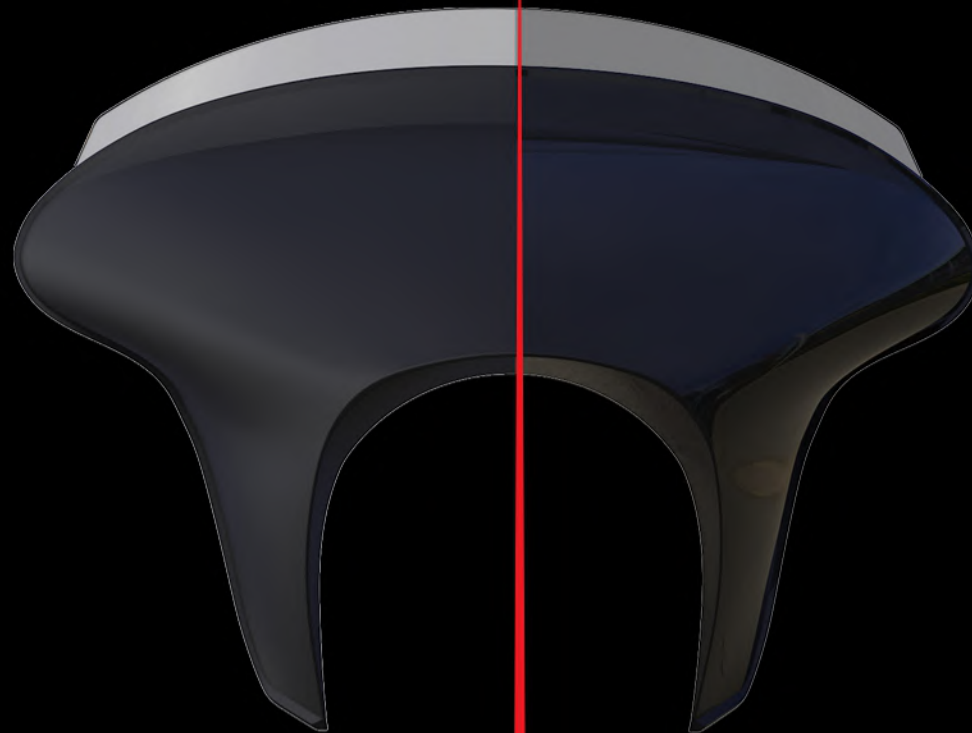
*BATWING SML*



*CustomAcces*

***CHOOSE THE MATERIAL THAT BEST  
SUITS YOUR MOTORCYCLE***

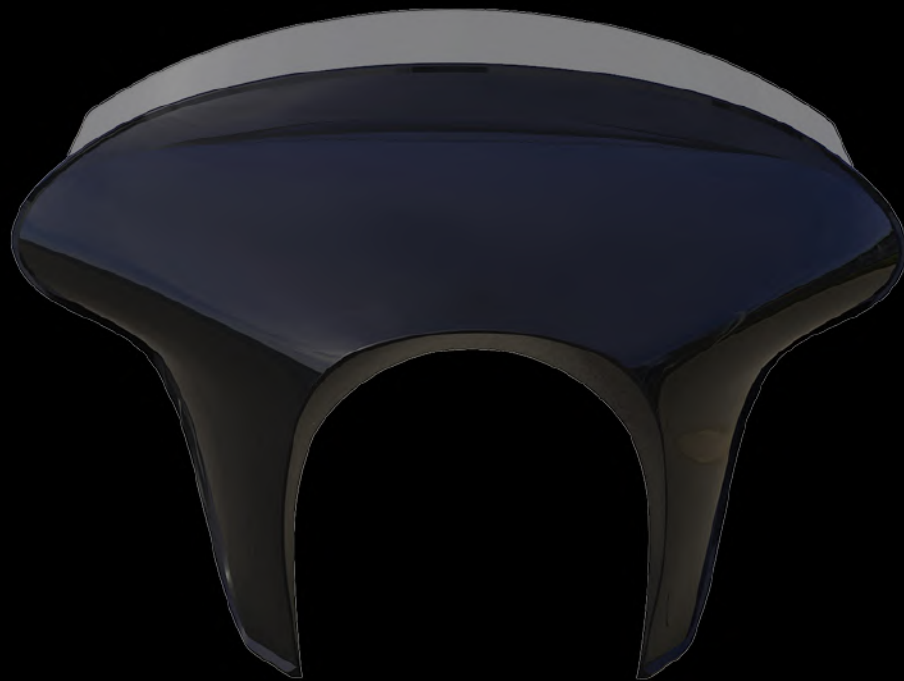
***ROUGH BLACK***



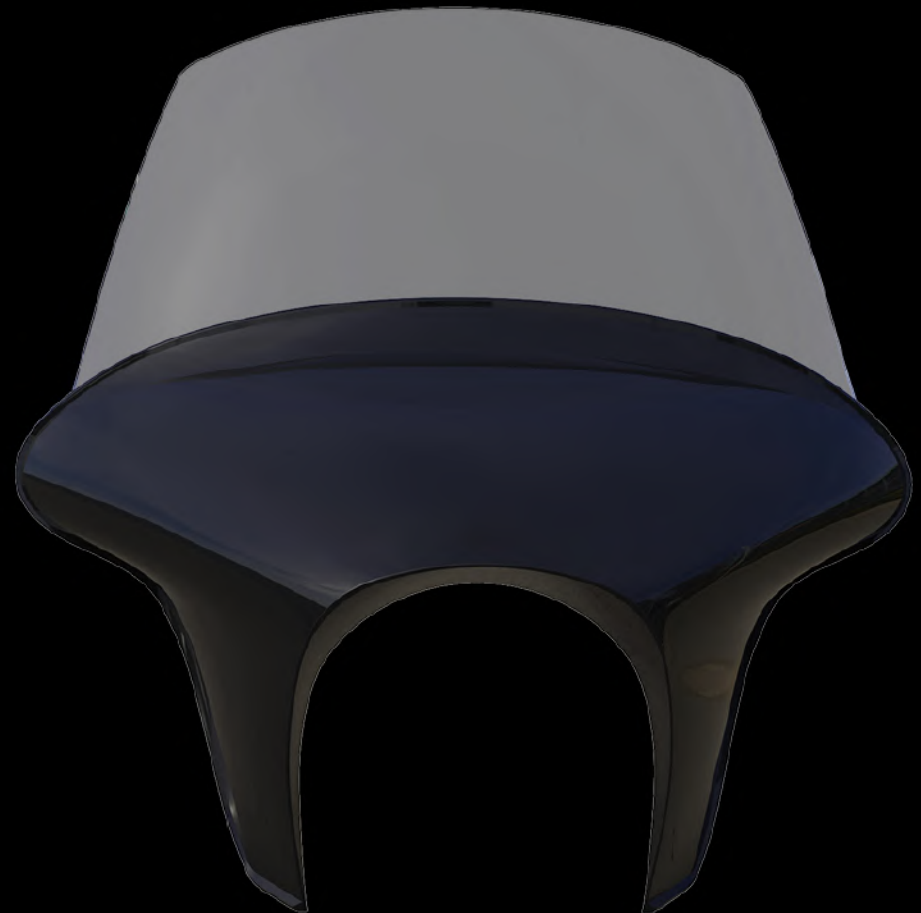
***SHINY BLACK***

***CustomAcces***

***CUSTOMIZE YOUR BATWING  
CHOOSING THE SIZE OF YOUR VISOR***



***SPORT***



***TOURING***

*HARLEY DAVIDSON SPORSTER 883 IRON*



*CustomAcces*

*HARLEY DAVIDSON STREET 750*



*CustomAcces*

*HONDA CMH500/300 REBEL*



*CustomAcces*

*HARLEY DAVIDSON SPORSTER 883 IRON*



*CustomAcces*



*HARLEY DAVIDSON STREET 750*



*CustomAcces*

*HONDA CMH500/300 REBEL*



*CustomAcces*

*YAMAHA XV950R BOLT*



*CustomAcces*

If you're looking for quality motorcycle windshields & fairings, visit our website.