



CRUSHER
DEFINING STYLE WITHIN PERFORMANCE

DEFINING STYLE WITHIN PERFORMANCE



THE PERFORMANCE DIVISION OF KURYAKYN

CRUSHER

NO LONGER DO RACETRACKS, TITLES AND CHAMPAGNE SHOWERS STRICTLY DETERMINE PERFORMANCE. A REFINED TASTE IN STYLE, COMMAND OF QUALITY AND APPRECIATION OF TRULY UNIQUE AND FLAWLESS SOUND ARE THE NEW STANDARDS. THESE STANDARDS FORGE OUR CODE OF HONOR. **DEFINING STYLE WITHIN PERFORMANCE.**



MAVERICK SERIES	4
4" SLIP-ONS	6
2.5" SLIP-ONS	14
HEADERS FULL SYSTEMS	18
AIR CLEANERS	28
CAMS	38
FUEL MANAGEMENT	40



THE MAVERICK SERIES

Premium style and performance for instant bragging rights. Potent Maverick exhaust components and heavy-breathing air cleaners generate the power you've been craving. Precision-machined from premium-grade billet aluminum for killer looks, plus sound and performance you'll love when cracking the throttle.



SLIP-ONS



MAVERICK 4" SLIP-ONS FOR TOURING & TRIKE

Command authority. A deep, low roar you'll love at wide-open throttle with lower decibel levels at cruising speeds. Precision-machined billet aluminum tips. High-flow louvered baffles are maintenance-free and never need repacking. Optional Sound Reduction Baffles available, pg 27.

Fits: '95-'15 Electra Glides, Road Glides, Road Kings, Street Glides, Tour Glides & Trikes (except '15 FLRT)

563 Chrome with Black Tips (pr)

564 Black with Black Tips (pr)

Note: Installation on '10 FLHX or FLTRX requires conversion to True Dual or Crusher Dual head pipes and Muffler Support & Grommet, P/N 560, sold separately.





TRIDENT SLIP-ONS FOR TOURING & TRIKE

Big, bold, and 100% badass. Intimidation starts with beefy chrome and black tips that demand notice. Featuring high-performance perforated core baffles with stainless steel packing for added longevity. Mellow slip-ons feature the same performance as the full sound with a toned-down growl that won't rattle the neighbors.

Fits: '95-'15 Electra Glides, Road Glides, Road Kings, Street Glides, Tour Glides & Trikes (except FLRT)

491 Crusher Mufflers with Trident Tips (pr)

505 Crusher Mellow Mufflers with Trident Tips (pr)

Note: Installation on '10 FLHX or FLTRX requires conversion to True Dual or Crusher Dual head pipes and Muffler Support & Grommet, P/N 560, sold separately. Ground clearance is reduced when installed on Trikes.





SLASH SLIP-ONS FOR TOURING & TRIKE

Angled tips flow seamlessly with your bike for irresistible style lines. Available with chrome or satin black tips, and featuring high-performance perforated core baffles with stainless steel packing for added longevity. Mellow slip-ons feature the same performance as the full sound with a toned-down growl that won't rattle the neighbors.

Fits: '95-'15 Electra Glides, Road Glides, Road Kings, Street Glides, Tour Glides & Trikes (except '15 FLRT)

- 549 Crusher Mufflers with Black Slash Tips (pr)

- 547 Crusher Mufflers with Chrome Slash Tips (pr)

- 548 Crusher Mellow Mufflers with Chrome Slash Tips (pr)

- 550 Crusher Mellow Mufflers with Black Slash Tips (pr)

Note: Installation on '10 FLHX or FLTRX requires conversion to True Dual or Crusher Dual head pipes and Muffler Support & Grommet, P/N 560, sold separately.



SLIP STREAM SLIP-ONS FOR TOURING & TRIKE

New-age power hidden behind a traditional disguise. Available with chrome or satin black tips, and featuring high-performance perforated core baffles with stainless steel packing for added longevity. Mellow slip-ons feature the same performance as the full sound with a toned-down growl that won't rattle the neighbors.

Fits: '95-'15 Electra Glides, Road Glides, Road Kings, Street Glides, Tour Glides & Trikes (except '15 FLRT)

- 545 Crusher Mufflers with Black Slip Stream Tips (pr)

- 490 Crusher Mufflers with Chrome Slip Stream Tips (pr)

- 546 Crusher Mellow Mufflers with Black Slip Stream Tips (pr)

- 504 Crusher Mellow Mufflers with Chrome Slip Stream Tips (pr)

Note: Installation on '10 FLHX or FLTRX requires conversion to True Dual or Crusher Dual head pipes and Muffler Support & Grommet, P/N 560, sold separately.



MAVERICK 2.5" SLIP-ONS FOR DYNA, SOFTAIL & SPORTSTER

Featuring precision-machined billet aluminum tips with high-temp black ceramic coating. Maintenance-free high-flow louvered baffles that never need repacking, with optional Sound Reduction Baffles (sold separately) if you want to keep the peace with your neighbors.

- 2.5" diameter with signature Maverick styling
- CNC-Machined billet end caps with high-temp black ceramic coating
- Brushed stainless steel banding featuring embossed Crusher word mark logo
- Chrome or matte black ceramic

FOR DYNA

Fits: '08-'15 FXDF Fat Bob, '09-'10 FXDFSE CVO Fat Bob & '10-'15 FXDWG Dyna Wide Glide

613 Chrome (pr)

614 Black (pr)

Fits: '91-'15 Dyna Models (except '08-'15 FXDF, '09-'10 FXDFSE, '10-'15 FXDWG, '14-'15 FXDL, '12-'15 FLD)

611 Chrome (pr)

612 Black (pr)

FOR SOFTAIL

Fits: '07-'15 FLSTC Heritage Classic, '10-'12 FLSTSE CVO Softail Convertible, '07-'08 FXST Standard, '07-'09 FXSTB Night Train, '07-'10 FXSTC Softail Custom, '13-'15 FXSB Breakout, '08-'11 FXCW/C, '09 FXSTSSE CVO Softail Springer, '13-'14 FXSBSE CVO Breakout

606 Chrome (pr)

Fits: '07-'15 FLSTF Fat Boy, '10-'15 FLSTFB Fat Boy Lo & '07 FXSTD Deuce

607 Chrome (pr)

608 Black (pr)

Fits: '07-'15 FLSTN Softail Deluxe, '08-'11 FLSTSB Softail Cross Bones & '12-'15 FLS Softail Slim

609 Chrome (pr)

610 Black (pr)

FOR SPORTSTER

Fits: '04-'13 XL Models

615 Chrome (pr)

616 Black (pr)

Fits: '14-'15 XL Models

617 Chrome (pr)

618 Black (pr)



HEADERS | FULL SYSTEMS



DUAL EXHAUST WITH POWER CELL FOR TOURING & TRIKE

Confidence delivered. Our best-performing head pipes with integrated Power Cell crossover enhance performance. Get 2-into-1 results masked by the Smooth Power Cell Heat Shield that lends a flawless flow to your ride. Includes all heat shields and mounting hardware necessary for installation.

Fits: '09-'15 Electra Glides, Road Glides, Road Kings, Street Glides & Trikes

558 Crusher Duals with Power Cell - Smooth Power Cell Heat Shield (set)

Note: '09-'13 Trikes require Exhaust Adapter Kit, P/N 561, sold separately. See page 27.



TRUE DUAL HEAD PIPES FOR TOURING & TRIKE

The total package. Revitalize your engine and heavy-hand the throttle. Bottomless growl with trusted results. Each cylinder breathes through its own header and muffler for enriched airflow and unmatched power. Includes all heat shields and mounting hardware necessary for installation.

Fits: '09-'15 Electra Glides, Road Glides, Road Kings, Street Glides & Trikes

516 True Dual Headers, Chrome (kit)

543 True Dual Headers, Black (kit)

Note: '09-'13 Trikes require Exhaust Adapter Kit, P/N 561, sold separately (pg 27).

Fits: '95-'08 Electra Glides, Road Glides, Road Kings, Street Glides & Tour Glides

513 True Dual Headers, Chrome (kit)



MAVERICK 2-INTO-2 FULL SYSTEMS FOR DYNA, SOFTAIL & SPORTSTER

Renegade styling for bold bikers. Embossed stainless steel bands and signature precision-machined billet aluminum tips. Deep reverberation, solid power gains and incomparable looks. The Maverick is a must-have for your Dyna, Softail or Sporty. High-flow louvered baffles are maintenance-free and never need repacking. Optional Sound Reduction Baffles available, pg 27.

FOR DYNA

Fits: '06-'15 Dyna Models (except '12-'15 FLD & '14-'15 FXDL)

567 Chrome (set)

568 Black (set)

FOR SOFTAIL

Fits: '86-'15 Softail Models (except '08-'11 FXCW/C, '13-'15 FXSB, '13-'14 FXSBSE)

565 Chrome (set)

566 Black (set)

FOR SPORTSTER

Fits: '04-'15 XL Models

569 Chrome (set)

570 Black (set)





POWER CELL STAGGERED DUAL EXHAUST

Keep the wicked looks of staggered duals with a system that executes like a 2-into-1. Tuned performance and deep, powerful exhaust notes. Optional mellow baffles diminish sound, not performance. Includes full heat shields with billet end caps.

DYNA

Fits: '06-'15 Dyna Models (except '14-'15 FXDL)

- | | |
|-----|---|
| 562 | Crusher Power Cell for Dyna with Chrome Smooth Power Cell Heat Shield and Chrome Tips (set) |
|-----|---|

SOFTAIL

Fits: '86-'15 Softail Models (except '08-'11 FXCW/C, '13-'15 FXSB, '13-14 FXSBSE)

- | | |
|-----|--|
| 559 | Power Cell Staggered Duals for Softail with Chrome Smooth Power Cell Heat Shield and Chrome Tips (set) |
|-----|--|



EXHAUST COMPONENTS

4" SLIP-ON COMPONENTS FOR TOURING & TRIKE

- | | |
|-----|--|
| 589 | Replacement Tip for Maverick 4" Touring Slip-Ons (ea)
Fits: Crusher Maverick 4" Slip-On Mufflers |
| 582 | Sound Reduction Baffles for Maverick 4" Touring Slip-Ons (pr)
Fits: Crusher Maverick 4" Touring Slip-On Mufflers |
| 584 | Left Replacement Band with Hardware for Maverick 4" Touring Slip-Ons (ea)
Fits: Left Side Crusher Maverick 4" Touring Slip-On |
| 585 | Right Replacement Band with Hardware for Maverick 4" Touring Slip-Ons (ea)
Fits: Right Side Crusher Maverick 4" Touring Slip-On |
| 581 | Replacement Stainless Screws for Maverick Exhaust, 16pk (set) |
| 503 | Mellow Baffles for Crusher Mufflers (pr)
Fits: Kuryakyn Crusher Mufflers, P/N's 490-491, 504-505 & 545-550 |

CRUSHER MUFFLER REPLACEMENT COMPONENTS

- | | |
|-----|---|
| 541 | Chrome Slash Tips for Crusher Mufflers (pr)
Fits: All Crusher Mufflers for Touring & Trike |
| 542 | Black Slash Tips for Crusher Mufflers (pr)
Fits: All Crusher Mufflers for Touring & Trike |
| 492 | Replacement Trident Tip for Crusher Muffler
Fits: Crusher Mufflers with Trident Tip Only, P/N's 491, 499, or 505 (ea) |
| 493 | Replacement Slip Stream Tip for Crusher Muffler
Fits: Crusher Mufflers with Slip Stream Tip Only, P/N's 490, 498, 504, 545 or 546 (ea) |

TORQUE CONES

Here's an inexpensive way to get back some of that lost horsepower and gas mileage without affecting the sound.

- | | |
|--|------------------------|
| Fits: Most 1-3/4" O.D. Twin Cam, Evolution Big Twin and XL Exhaust Systems | 9155 Torque Cones (pr) |
|--|------------------------|

EXHAUST BRACKETS & COMPONENTS FOR CRUSHER EXHAUST

Additional brackets, gaskets and components for installation of Crusher exhaust products.

- | | |
|-----|--|
| 482 | Crusher - Cometic Exhaust Port Gaskets (pr)
Fits: All Twin Cam, Evo Big Twin & XL Sportster Engines |
|-----|--|

ADAPTER KITS

- | | |
|-----|---|
| 561 | Trike Exhaust Adapter Kit (kit)
Fits: Required to Install Crusher Head Pipes, P/N's 488, 516, 517, 543, 558 or 588 on '09-'13 H-D Trikes |
|-----|---|

BUNG PLUGS

- | | |
|-----|---------------------------------|
| 540 | 12mm O2 Sensor Bung Plugs (kit) |
| 509 | 18mm O2 Sensor Bung Plugs (kit) |

SUPPORT BRACKETS

- | | |
|-----|---|
| 560 | Muffler Support Bracket & Rubber Grommet (kit)
Fits: '95-'13 Electra Glides, Road Glides, Road Kings, Street Glides, Tour Glides & Trikes (Mounts 1 Muffler) |
|-----|---|

POWER CELL STAGGERED DUAL EXHAUST COMPONENTS

- | | |
|-----|---|
| 544 | Mellow Baffles for Crusher Power Cell Exhaust (pr)
Fits: All Crusher Power Cell Staggered Duals for Softail & Dyna |
|-----|---|

MAVERICK 2-INTO-2 FULL SYSTEM + 2.5" SLIP-ON COMPONENTS FOR DYNA, SOFTAIL & SPORTSTER

Fits: Crusher Maverick 2-Into-2 Systems and 2.5" Slip-Ons

- | | |
|-----|---|
| 581 | Replacement Stainless Screws for Maverick Exhaust (16 pk) (set) |
| 587 | Replacement Tip for Maverick 2-Into-2 & 2.5" Slip-Ons (ea) |
| 590 | Sound Reduction Baffles for Maverick 2-Into-2 Systems & Slip-Ons (pr) |
| 586 | Replacement 2-1/2" Band with Hardware for Maverick Exhaust (ea) |

AIR CLEANERS



MAVERICK AIR CLEANER

We've taken the skillful styling found on Maverick Series exhaust components and created a heavy-breathing monster of an intake unit in the form of the Maverick Air Cleaner. Available in Chrome or Black with embossed stainless steel badge featuring the Crusher word mark, the Maverick Air Cleaner can support engine builds in excess of 150 hp, features a Crusher-designed K&N lifetime filter element, and a high-flow curved entry to the throttle body for optimum performance.

FITMENT	CHROME	BLACK
'91-'06 XL Models with CV Carb	9887	9882
'07-'15 XL Models	9888	9883
'93-'99 Evolution Big Twin with CV Carb	9892	9891
'99-'15 Twin Cam with CV Carb or Delphi EFI (except '08-'15 Touring/Trike, '11-'12 FLSTSE, '13-'14 FXSBSE & '14-'15 FLSTNSE)	9889	9884
'08-'15 Electra Glides, Road Glides, Road Kings, Street Glides; Trikes, '11-'12 FLSTSE, '13-'14 FXSBSE, '14-'15 FLSTNSE Note: '11-'13 FLHTCUSE, '14-'15 FLHTKSE, '09 FLTRSE, '11 FLTRUSE, '12-'15 FLTRXSE, '13-'14 FLHRSE, '10-'15 FLHXSE, '11-'12 FLSTSE, '13-'14 FXSBSE & '14-'15 FLSTNSE also require Throttle Body Support Bracket, P/N 9929, sold separately.	9890	9885
Complete Air Cleaner Assembly (Bolt Pattern for CV Carb Delphi). Use with Adapters, Brackets, or Mounting Kits for Custom Applications. Note: Will Bolt directly to stock 40mm or Screamin' Eagle 44mm CV carbs or Delphi throttle bodies. Can be installed on Mikuni HSR42/45/48, S&S E or G Shorty, or other aftermarket carbs by using adapters, sold separately.	9886	9881



VELOCIRAPTOR® AIR CLEANER

Unlike most velocity stacks on the market, the Velociraptor breathes well and filters the air with its K&N washable element. The Super Ring insert covers up the mounting bolts, delivering smooth airflow into your motor.

FITMENT	CHROME	BLACK
'91-'06 XL with CV Carb	9510	9876
'07-'15 XL Models	9872	9877
'93-'99 Evolution Big Twin w/CV Carb	9511	9878
'99-'15 Twin Cam with CV Carb or Delphi EFI (except '08-'15 Touring/Trike, '11-'12 FLSTSE, '13-'14 FXSBSE & '14-'15 FLSTNSE)	9512	9879
'08-'15 Electra Glides, Road Glides, Road Kings, Street Glides & Trikes; '11-'12 FLSTSE, '13-'14 FXSBSE & '14-'15 FLSTNSE	9513	9880
Complete Air Cleaner Assembly (Bolt Pattern for CV Carb/Cable Throttle Delphi). Use with Adapters, Brackets, or Mounting Kits for Custom Applications.	9870	9875

Note: '11-'13 FLHTCUSE, '14-'15 FLHTKSE, '09 FLTRSE, '11 & '15 FLTRUSE, '12-'13 FLTRXSE, '13-'14 FLHRSE, '10-'12 & '15 FLHXSE, '11-'12 FLSTSE, '13-'14 FXSBSE & '14-'15 FLSTNSE also require Throttle Body Support Bracket, P/N 9929, sold separately.





ALLEY CAT AIR CLEANER

This heavy-breathing kitty can support engine builds in excess of 150hp, features a high-flow parabolic curve entry to the throttle body and hotrod-style knock-off end caps for retro styling. Slim design to minimize legroom interference, and includes lifetime Crusher-designed K&N Filter Element.

FITMENT

	CHROME	BLACK & CHROME
'99-'15 Twin Cam with CV Carb or Delphi EFI (except '08-'15 Touring/Trike, '11-'12 FLSTSE, '13-'14 FXSBSE & '14-'15 FLSTNSE)	9515	9517
'08-'15 Electra Glides, Road Glides, Road Kings, Street Glides & Trikes; '11-'12 FLSTSE, '13-'14 FXSBSE & '14-'15 FLSTNSE	9508	9516
Complete Air Cleaner Assembly (Bolt Pattern for CV Carb/Cable Throttle Delphi). Use with Adapters, Brackets, or Mounting Kits for Custom Applications.	N/A	N/A

Note: '11-'13 FLHTCUSE, '14-'15 FLHTKSE, '09 FLTRSE, '11 & '15 FLTRUSE, '12-'13 FLTRXSE, '13-'14 FLHRSE, '10-'12 & '15 FLHXSE, '11-'12 FLSTSE, '13-'14 FXSBSE & '14-'15 FLSTNSE also require Throttle Body Support Bracket, P/N 9929, sold separately.



MACH 2™ CO-AX

Impress with its beauty and stun with its performance! The Mach 2 Co-Ax can support engine builds over 150hp and features a lifetime Crusher-designed K&N filter element, along with a high-flow parabolic curve entry to throttle body that delivers supreme performance.

FITMENT

	CHROME	BLACK
'91-'06 XL with CV Carb	9567	9573
'07-'15 XL Models	9568	9574
'93-'99 Evolution Big Twin with CV Carb	9569	9575
'99-'15 Twin Cam with CV Carb or Delphi EFI (except '08-'15 Touring/Trike, '11-'12 FLSTSE, '13-'14 FXSBSE & '14-'15 FLSTNSE)	9570	9576
'08-'15 Electra Glides, Road Glides, Road Kings, Street Glides & Trikes; '11-'12 FLSTSE, '13-'14 FXSBSE & '14-'15 FLSTNSE	9571	9577
Complete Air Cleaner Assembly (Bolt Pattern for CV Carb Delphi). Use with Adapters, Brackets, or Mounting Kits for Custom Applications.*	9566	9572

Note: '11-'13 FLHTCUSE, '14-'15 FLHTKSE, '09 FLTRSE, '11 & '15 FLTRUSE, '12-'13 FLTRXSE, '13-'14 FLHRSE, '10-'12, '15 FLHXSE, '11-'12 FLSTSE, '13-'14 FXSBSE & '14-'15 FLSTNSE also require Throttle Body Support Bracket, P/N 9929, sold separately.

*Note: Will Bolt directly to stock 40mm or Screamin' Eagle 44mm CV carbs or Delphi throttle bodies. Can be installed on Mikuni HSR42/45/48, S&S E or G Shorty, or other aftermarket carbs by using adapters, sold separately.



SEE MORE AIR CLEANERS

Several striking intake options to radically improve airflow for results you can feel. Available in multiple finishes and applications that can support engine builds from 90hp to over 150hp. All air cleaners feature K&N filter elements.



MACH 2™

- Supports engine builds well over 140hp
- Customizable with available themed medallions, mesh inserts and everything in between
- Includes lifetime Crusher-designed K&N filter element
- Two center caps included for personalization options



HYPERCHARGER™

- Can support engine builds up to 90 hp (over 130hp with P/N 8498 Stinger upgrade)
- Multiple color upgrades & configurations
- Vacuum-operated butterflies for precise airflow and old-school hotrod styling
- Lifetime Crusher-designed K&N filter element



PRO-SERIES HYPERCHARGER™

- Can support engine builds up to 120hp
- Smooth one-piece outer cover
- Vacuum operated butterflies for precise airflow & added wow factor
- K&N washable filter element



PRO-R HYPERCHARGER™

- Can support engine builds in excess of 140hp
- Best-performing Hypercharger you can buy
- Airflow is smooth and precise, delivering maximum power
- Comes with all mounting hardware and crankcase breather kits



580

TC-23D BOLT-IN CAMS FOR TWIN CAM

- Performance bolt-in cam designed for great low and mid-range grunt torque for 96's and 103's
- Can be used with stock pushrods (requires removal of fuel tank and rocker boxes)
- Kit includes new inner cam bearings
- Easy on the valve train, no valve spring replacements or head work needed
- To simplify installation, use Crusher Easy Install Pushrods

Fits: '06 Dyna Models, & All '07-'15 Twin Cams

580 Crusher TC-23D Bolt-In Cams (set)

GRIND	LIFT (INCHES)	LIFT @ TDC (INCHES)	OPENING (DEGREES)	CLOSING (DEGREES)	DURATION (DEGREES)	LOBE CENTER (DEGREES)
Intake	.548	.153	13	29	222	98
Exhaust	.548	.163	43	15	238	104



579

TC-24D BOLT-IN CAMS FOR TWIN CAM

- The ultimate bolt-in cams for '07-'15 Harley-Davidson Twin Cams
- Really makes the 103's and 110's come to life, works great in 96", too
- Kit includes new inner cam bearings
- Strong bottom end & mid-range with good top-end gains
- Responds well to head work & higher compression (up to 10:1)

Fits: '06 Dyna Models & All '07-'15 Twin Cams (adjustable push rods required)

579 Crusher TC-24D Bolt-In Cams (set)

GRIND	LIFT (INCHES)	LIFT @ TDC (INCHES)	OPENING (DEGREES)	CLOSING (DEGREES)	DURATION (DEGREES)	LOBE CENTER (DEGREES)
Intake	.575	.190	20	42	242	101
Exhaust	.547	.150	46	14	240	106



578

TC-25D BOLT-IN CAMS FOR TWIN CAM

- Great low-mid range bolt-in torque cam for 110" Twin Cams
- Can be used with stock pushrods and valve springs
- Easy on the valve train and do not require cylinder head modifications
- Kit includes new inner cam bearings
- Dyno test numbers when run with Crusher exhaust, air cleaner and TTS tuner produced 107 hp and 119 ft. lb. of torque
- To simplify installation, use Crusher Easy Install Pushrods

Fits: '06 Dyna Models, & All '07-'15 Twin Cams

578 Crusher TC-25D Bolt-In Cams (set)

GRIND	LIFT (INCHES)	LIFT @ TDC (INCHES)	OPENING (DEGREES)	CLOSING (DEGREES)	DURATION (DEGREES)	LOBE CENTER (DEGREES)
Intake	.560	.184	18	38	236	100
Exhaust	.560	.153	46	14	240	106

EASY INSTALL ADJUSTABLE PUSHRODS FOR TWIN CAM

- Designed for '99-'15 Harley-Davidson Twin Cams
- Works with stock pushrod tubes
- Easy to install; simply cut out stock pushrods
- Does not require removal of the fuel tank or rocker boxes for installation
- Made from high-strength chrome moly steel

Fits: '99-'15 Twin Cams

577 Crusher Easy Install Adjustable Pushrods



HIGH PERFORMANCE HYDRAULIC LIFTERS FOR TWIN CAM

- Direct replacements for stock lifters in '99-'15 Harley-Davidson Twin Cams
- Tight tolerances and precision-ground lifter bodies make these a must for doing complete builds or cam swap
- Combine with Crusher Cams and Easy Install Pushrods for a potent package
- Sold in sets of four

Fits: All '99-'15 Twin Cams & '00-'15 XL Models

659 Crusher High Performance Hydraulic Lifters

COMETIC® CAM SERVICE GASKET SET

Provides all the gaskets and seals needed when changing a cam (cam cover, push-rod tubes, rocker boxes, etc.)

Fits: '99-'15 Twin Cams

481 Cam Chest Gasket Set (set)



FUEL MANAGEMENT

VANCE & HINES FUELPAK FP3

The Fuelpak FP3 will revolutionize fuel management for all new Harley-Davidson models now using the HDLAN (CAN Bus) system. Connecting wirelessly by Bluetooth to iPhone or Android Smartphones, Fuelpak FP3 uses Flash technology to recalibrate engine parameters and mapping for exhaust systems and other performance upgrades. With the Fuelpak FP3 module plugged-in, Live Sensor Data can be viewed through the smartphone to display speed, RPM, cylinder head temperature, voltage, gear selection and other vital information.

Fits: '14-'15 Electra Glides, Road Glides, Road Kings & Street Glides, '14-'15 Trikes; '11-'15 Softails (except '11-'13 CVO Models), '12-'15 Dynas, '14-'15 Sportsters & '14-'15 Streets



230 Vance & Hines Fuelpak FP3 (V&H 66005) (ea)

VANCE & HINES FUELPAK

Fine-tune the fuel mixture throughout the entire rpm range with the touch of a button to increase power and improve throttle response. Plugs into the existing harness on the bike with no computer software required, and includes all necessary mounting hardware.

VANCE & HINES



235

232 Fits: '11-'13 Electra Glides, Road Glides, Road Kings & Street Glides (V&H 61019) (ea)

252 Fits: '08-'10 Electra Glides, Road Glides, Road Kings & Street Glides (V&H 61009) (ea)

236 Fits: '02-'07 Electra Glides, Road Glides, Road Kings & Street Glides (V&H #61003A) (ea)

227 Fits: '12-'13 Softail Models (except '12 FLSTSE) & '12-'13 Dyna Models (V&H 61017) (ea)

235 Fits: '01-'06 Fat Boy, '05-'11 Deluxe, '01-'11 Heritage, '01-'03 Heritage Springer, '01-'06 Softail Standard, '01-'06 Night Train, '01-'07 Deuce, '05-'07 Springer Classic (V&H #61001A) (ea)

238 Fits: '07-'11 Softail with 200mm Tire (V&H 61007A) (ea)

279 Fits: '04-'11 Dynas, '02-'11 V-Rods, '09-'11 XR1200, '08-'11 Rockers, '08-'11 Crossbones (V&H #61005B) (ea)

226 Fits: '07-'13 Sportster Models (except XR1200/X) (V&H 61023) (ea)

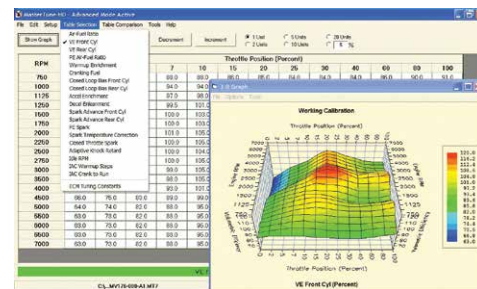
Note: Requires the use of a high-performance air filter.



9230



9225



ONLINE TUTORIALS!

TTS MASTERTUNE

The most powerful tuning tool available for your motorcycles ECM, bar none! Available in two different versions, this one tool contains three powerful programs including Mastertune tuning software, Data Master data acquisition and VTune, a self-tuning software solution. Mastertune has over 20 tables and parameters to optimize your ECM including air-fuel mixture and timing. (Some early year bikes may have fewer tables). The 4-Channel Analog version offers all the same great features of the original along with four 0-8 vdc inputs for devices like EGT probes, AFR meters and such. The unit will fully integrate the 4-channel input information into DataMaster and Flight Recorder programs so it can be graphed or displayed like all other data from the ECM. Not compatible with Apple/Mac.

TTS MASTERTUNE KITS

- 9226 TTS MasterTune Dual Bike Kit
Fits: '01-'15 H-D Models with Delphi EFI (kit)
- 9225 TTS MasterTune Single Bike Kit
Fits: '01-'15 H-D Models with Delphi EFI (kit)
- 9230 TTS 4-Channel Analog MasterTune Single Bike Kit
Fits: '01-'15 H-D Models with Delphi EFI (kit)

USB CABLE KITS

- 9228 MasterTune USB Cable Kit, 4-Pin for J1850 Delphi
Fits: For use with TTS MasterTune on '02-'13 Electra Glides, Road Glides, Road Kings & Street Glides; '09-'13 Trikes, '01-'10 Softails, '04-'11 Dynas & '07-'13 Sportsters (kit)
- 9227 MasterTune USB Cable Kit, 6-Pin for CAN Softail & Dyna
Fits: For use with TTS MasterTune on '11-'15 Softails & '12-'15 Dynas (kit)
- 9229 MasterTune USB Cable Kit, 6-Pin for CAN Touring
Fits: For use with TTS MasterTune on '14-'15 Electra Glides, Road Glides, Road Kings, Street Glides, Trikes & Street Models (ea)
- 9223 MasterTune USB Cable For Original P/N 9220 TTS (Black Interface) on '01-'13 Delphi Equipped H-D Motorcycles (ea)

Note: The TTS Master Tune does NOT include link cables for tuning. If you install the TTS Master Tune yourself you will need to purchase the appropriate USB Cable Kit for your application. Not compatible with Apple/Mac.