

## Items Supplied >

- 1 - Detachable Bigass Chrome or Black Rack with Latches
- 2 - 3/8" I.D. Front Mounting Bushings
- 2 - 3/8" I.D. Rear Bushing Spacers
- 2 - 3/8" I.D. Rear Bushing Sleeves
- 2 - 3/8" I.D. Rear Bushings
- 4 - 3/8"-16 x 1-3/4" Button Head Bolts Zinc

## Application(s) >

HARLEY:		
SOFTAIL:	FLFB	2018 - 2020
	FLBR	2018 - 2020

(ONLY ABOVE MODELS AS OF JANUARY 2020)

## Instruction Manual >

602-2612 / 602-2612B

Page 1 of 3

**Read all instructions carefully before installing your new Cobra® product!**

1. Remove the front bolt from the right side fender rail and discard. **NOTE:** Remove one side only so the fender does not fall resulting in possible scratches or damage to the fender or paint. See **FIGURE 1**.
2. Install the front mounting bushing into the front hole using the supplied 3/8"-16 x 1-3/4" long buttonhead bolt and tighten bolt securely. See **FIGURE 3**.
3. Remove the right rear fender rail bolt and discard. See **FIGURE 1**.
4. Assemble the supplied plastic bushing over the sleeve as shown in **FIGURE 2**. Make sure the chamfered inner edge goes towards the wide end of the sleeve.
5. Install the rear bushing assembly as oriented in **FIGURE 3**, using the supplied 3/8"-16 x 1-3/4" long button head bolt and tighten bolt securely.



**FIGURE 1**

CONTINUED ON PAGE 2

**\* Cobra® recommends you always wear a helmet while riding. Please never operate your motorcycle while under the influence of alcohol and/or drugs. Enjoy the new look of your motorcycle and please ride safely.**

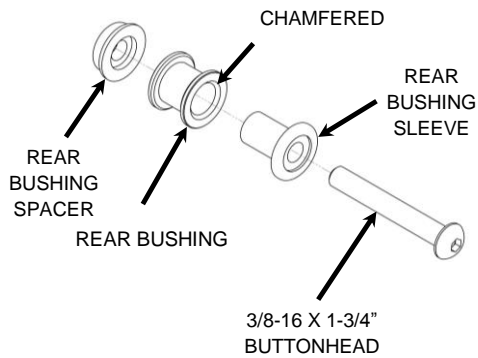


FIGURE 2

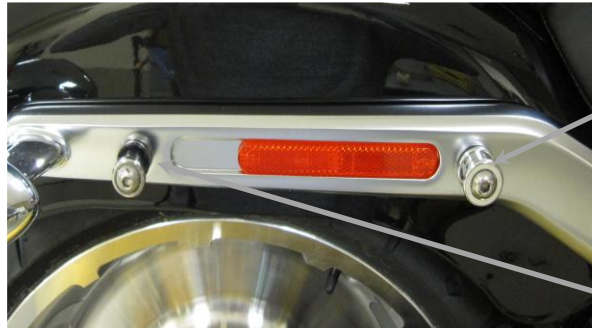


FIGURE 3

6. Repeat Steps 1-5 on the left side.
7. Install the detachable rack onto the motorcycle by first inserting the front portions of the side plates on to the front mounting bushings on the frame rails. Make sure the rack is seated all the way onto the mounting bushings. See **FIGURE 4**.
8. Then slowly rotate the rack downward so the rear portions of the side plates slip over the rear mounting bushings. See **FIGURE 4**.

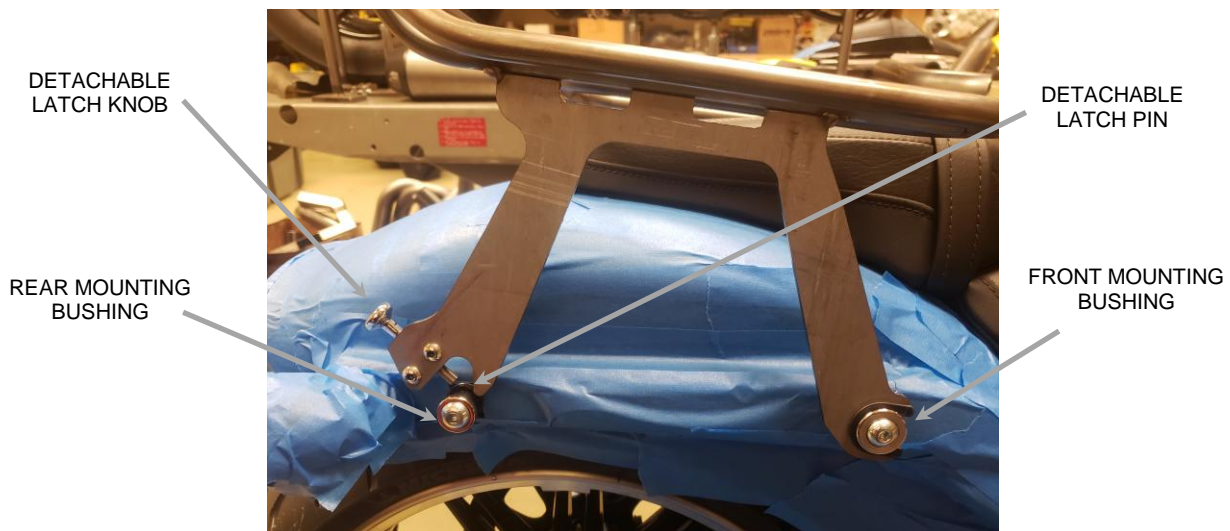
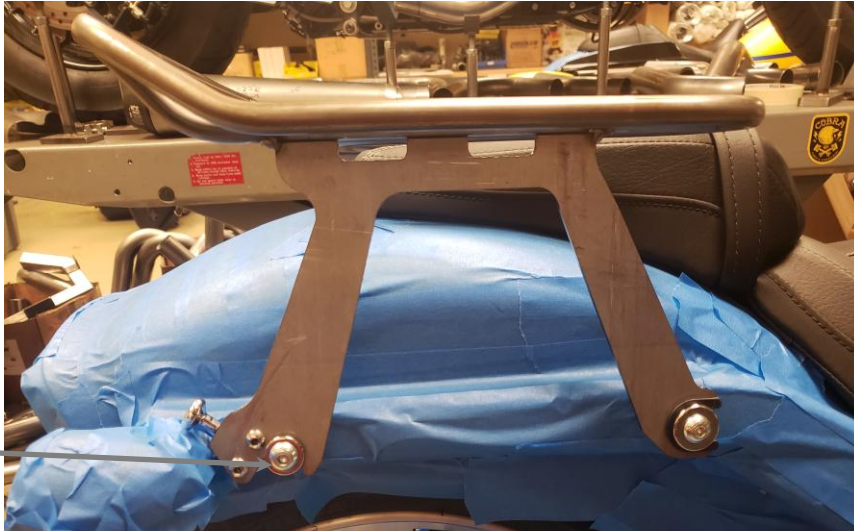


FIGURE 4

CONTINUED ON PAGE 3



MAKE SURE  
LATCH PIN IS  
FULLY  
ENGAGED  
UNDER  
BUSHING

**FIGURE 5**

9. Pull backward on both detachable latch knobs and then push downward on the rack to allow the rack to sit completely on the rear mounting bushings. Then release the detachable latch knob to fully engage the latch pin underneath the mounting kit bushing. See **FIGURE 5**.
10. Always check to make sure both detachable latch pins are fully engaged on the bottom of the mounting kit bushing. See **FIGURE 5**.
11. Before each ride, check to make sure the detachable latches are fully engaged underneath the mounting bushings.
12. Check the tightness of all the screws after the first ride, after the first 500 miles, and at every engine service thereafter.

To clean your black accessory use a liquid based soap detergent, such as dishwashing soap applied with a soft cloth and rinse with clean water. Note: Avoid abrasive cleaning methods such as granular or dry cleansers, simple green, Scotch-Brite or steel wool pads. Abrasives may breach the coating and shorten life.