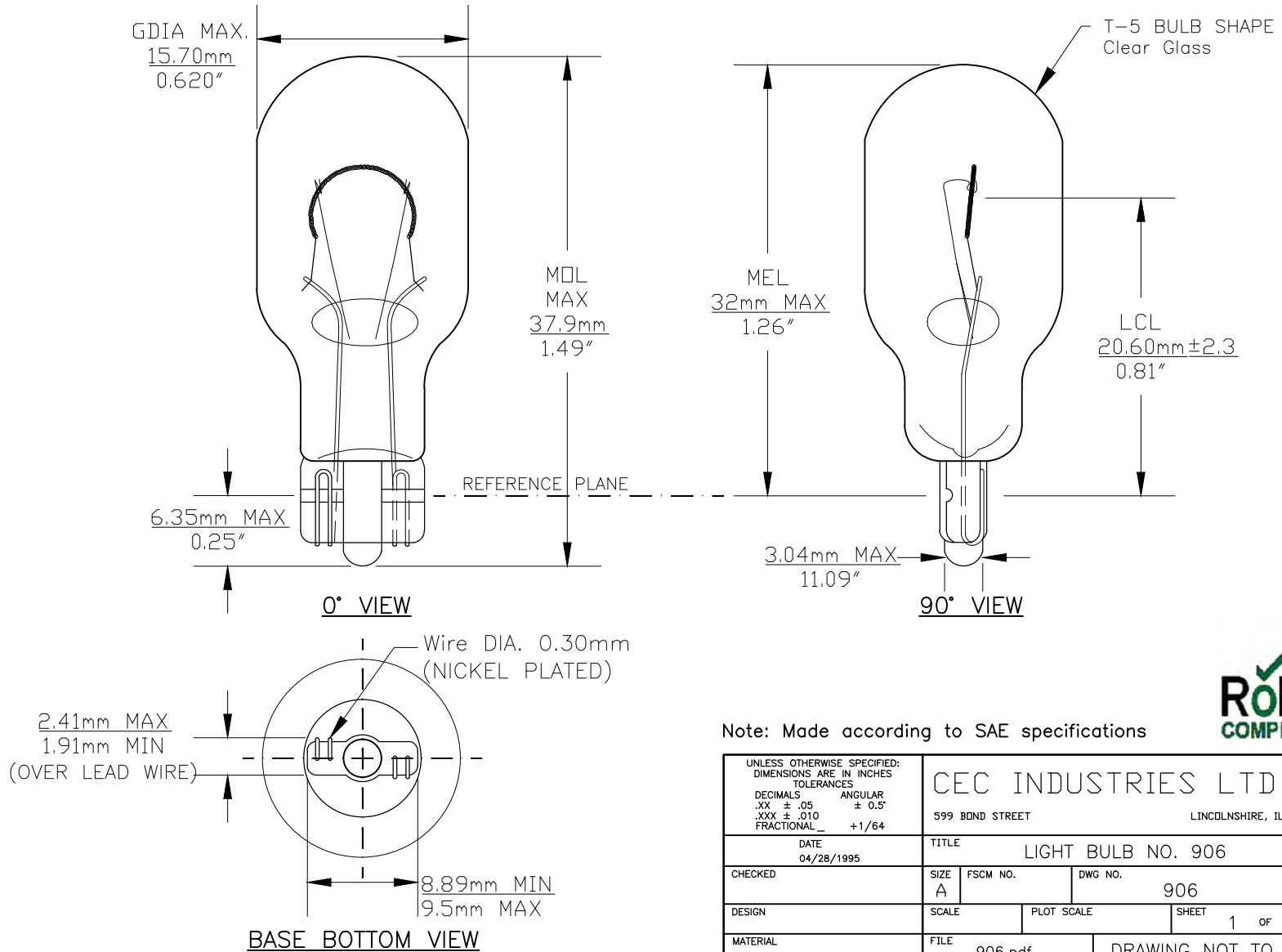




PART NO.	BASE TYPE	DESIGN VOLTS	DESIGN AMPS	MSCD	FILAMENT TYPE	AVERAGE LIFE HOURS	REVISIONS			
							REV #	DESCRIPTION	DATE	APPROVED
906	Glass Wedge (T-5) W2.1x9.2d	13.0V	0.69±10%	6.0±15%	C-2F	1,000	1	VERIFIED DIMENSIONS ACCORDING TO SAE STANDARD	11/07/2003	A.S.
							2	CORPORATION ADDRESS MOVING CHANGE	09/08/2004	S.L.
							3	ADDITION OF BOTTOM VIEW	01/27/2006	D.C.



Note: Made according to SAE specifications



UNLESS OTHERWISE SPECIFIED: DIMENSIONS ARE IN INCHES TOLERANCES		CEC INDUSTRIES LTD	
DECIMALS .XX ± .05	ANGULAR ± 0.5°	599 BOND STREET	LINCOLNSHIRE, IL 60069
.XXX ± .010	FRACTIONAL _ +1/64	TITLE LIGHT BULB NO. 906	
DATE 04/28/1995	CHECKED	SIZE A	REV 3
DESIGN	SCALE	FSCM NO.	DWG NO. 906
MATERIAL	FILE 906.pdf	PLOT SCALE	SHEET 1 OF 1
		DRAWING NOT TO SCALE	

Cec Industries provides the best in car bulbs equipment.