

# HEAVY-DUTY WHEEL CHOCK

| ACCOMMODATES WHEEL SIZES 17 IN. TO 21 IN.

| MADE OF HIGH-STRENGTH STEEL



## INCLUDED:

- 1 MOTORCYCLE WHEEL CHOCK
- 4 CARRIAGE BOLTS M10x70
- 4 BLACK PLASTIC SPACERS
- 4 FLAT WASHERS
- 4 LOCK WASHERS
- 4 NUTS
- 1 T-ROD
- 1 COTTER PIN  
(FOR SECURING T-ROD)

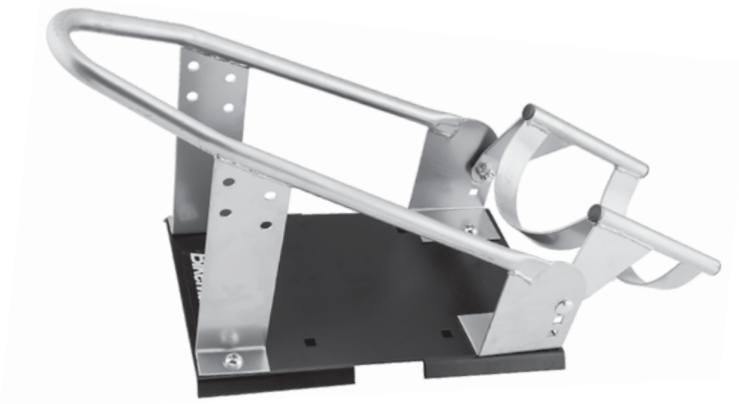
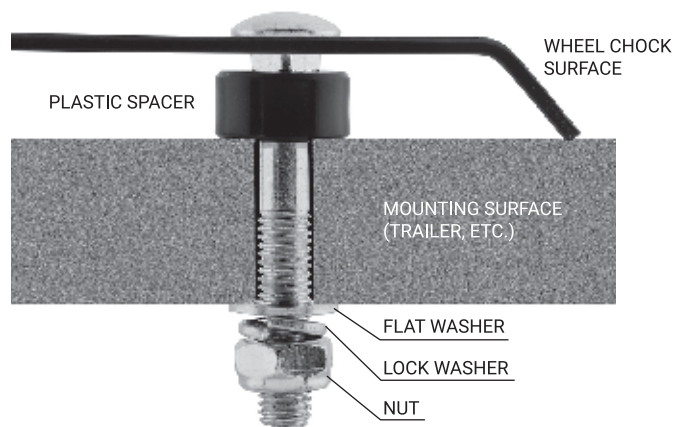
## INSTRUCTIONS:

1. Securely mount the heavy-duty wheel chock to desired surface (trailer, truck bed, etc.) with the supplied hardware.
2. Roll motorcycle into the heavy-duty wheel chock.
3. Secure motorcycle with tie down straps (not included).
4. Install T-Rod into appropriate hole location, so it does not contact rim or spokes, and secure with cotter pin.

To remove motorcycle from heavy-duty wheel chock, reverse steps 2 through 4.

## CROSS SECTION VIEW

TYPICAL MOUNTING METHOD USING ENCLOSED HARDWARE



T-ROD



COTTER PIN

Shop for other stands & lifts on our website.