



**IMPORTANT: READ BEFORE USING**

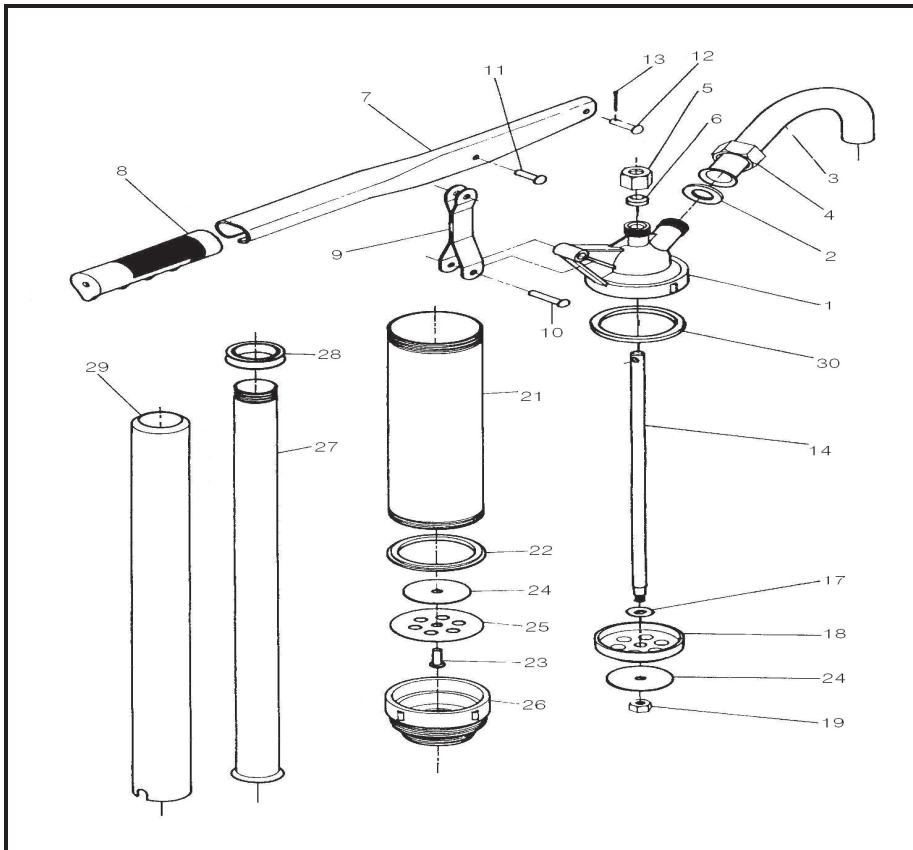
**INSTALLATION AND OPERATING INSTRUCTIONS LEVER ACTION DRUM PUMP**

**Description**

This pump is designed for fast transfer of lubricants, anti-freeze, solvents, agricultural and industrial chemicals, and other non-corrosive liquids from 15 to 55 gallon drums. Aluminum body and suction tube for lasting quality and appearance. Equipped with a self-adjusting telescopic suction tube for pumping all contents from 15 to 55 gallon drums. 2" and 1-1/2" NPT bung adapter and Cushioned vinyl handle included. Removable spout is threaded for garden hose fittings. Dispenses approximately 12 oz per stroke.

**General Safety Information**

1. Always carefully read, thoroughly understand and follow the pump operating instructions. Use this pump correctly and with care for the purpose for which it is intended. Failure to do may cause damage or personal injury, and will invalidate the warranty. Retain instructions for future reference.
2. Contact your chemical or fluid supplier to check for compatibility with pump prior to installation and operation
3. Prior to use, always carefully and thoroughly read and understand the OSHA information contained in the Safety Data Sheet supplied for the chemical which is to be pumped.
4. Wear protective clothing (goggles, face masks, long sleeves, long pants, gloves, aprons, etc.) as set forth in the OSHA Safety Data Sheet when pumping any hazardous chemicals.
5. When using flammable liquids, pump containers should be grounded to avoid static electricity.
6. Any pump used for transferring flammable liquids must be stored in a ventilated area after use.
7. Pump should be washed out before it is used since processing lubricants may contaminate the fluids.
8. Prior to use, inspect your pump thoroughly verifying its proper assembly.
9. If pump is removed from drum, it should be thoroughly rinsed in a liquid that is compatible with both the pump and fluid.



PARTS LIST	
Ref No.	Description
1	Cylinder Cap
2	Spout Seal
3	Discharge Spout
4	Spout Nut
5	Piston Rod Nut
6	Piston Rod Seal
7	Handle
8	Grip
9	Handle Lever
10	Rivet
11	Rivet
12	Rivet
13	Pin
14	Piston Rod
17	Washer
18	Upper Piston
19	Valve Nut
21	Cylinder Body
22	Seal
23	Rivet
24	Piston Washer
25	Piston
26	Bung Adapter
27	Lower Suction Tube
28	Tube Seal
29	Upper Suction Tube
30	Cap Seal

**Specifications**

Pump Type -----	Lever Action
Flow -----	11 oz / Stroke
Maximum Fluid	
Temperature -----	140°F / 60°C
Bung Adapter -----	1-1/2" & 2"
Suction Tube Length ----	35" Maximum
Inlet -----	1" O.D.
Outlet -----	3/4" O.D. Curved Spout
Wetted Materials of	
Construction -----	Aluminum, Steel, PE & NBR
Maximum Viscosity -----	1,000 SSU

**Assembly and Installation**

1. Check to see if all parts are included.
2. Attach pump handle (Ref No. 7) to piston rod (Ref No. 14) by using included rivet and pin (Ref No. 12 & 13).
3. Install discharge spout (Ref No. 3) and make sure the spout seal (Ref No. 2) is in place. Tighten firmly to make sure discharge spout is secure.
4. Screw the assembled suction tube (Ref No. 27, 28 & 29) to bottom of pump body.
5. Insert pump assembly into either 1-1/2" or 2" opening of 55 gallon drum. Then screw clockwise into drum.
6. The pump is now ready for operation. Liquid should begin to flow after 3 strokes. If any leakage occurs, simply tighten piston rod nut (Ref No. 5) located on top of pump. Over tightening this nut will damage seal, make the pump difficult to operate, and may strip nut.