



STAR



OWNER'S MANUAL

TABLE OF CONTENTS

Introduction

Do's and Don'ts

Helmet Selection

How to Best Wear Your New Bell Star

Protect Your Eyes

Care and Cleaning

Velocity Flow Ventilation System

Cleaning Road Debris from the Star's Vent Intakes

Breath Guard Install

Intro to the Star Shield/Shield Mechanism

Chin Guard Install

Star's 3-Mode Shield

Star's Interior Components

Interior Comfort Padding Removal

Installing Communication Devices into your New Star

Interior Comfort Padding Installation

INTRODUCTION

Head protection is a complicated subject which cannot be fully discussed in this owner's manual. Regardless, before your first ride, you should read this owner's manual carefully for important information about your new Bell Star.

You should also store this manual in a place where you can retrieve it for periodic review or if any questions arise. You should not use your new Star until you have read and fully understand the contents of this manual.

LIMITS OF YOUR NEW BELL STAR HELMET

Your Bell Star is designed to reduce or prevent certain injuries, and studies show you are better off in an accident if you are wearing a helmet than if you are not. Regardless, a motorcycle helmet cannot protect against all foreseeable impacts or injuries. For example, your helmet cannot protect against spinal injuries, neck injuries, or any portion of the body it does not cover. In addition, it may not protect against injuries to areas the helmet does cover. For example, your helmet is made of energy absorbing materials which may or may not crush depending upon the impact. Sometimes the force of the impact is such that there is no crush, and sometimes the force of the impact is such that the material crushes completely, in either case at least some of the force of the impact is transmitted to the head and brain, and permanent injury or death may result.

In addition, some head injuries are not caused by impacts. They are caused by other forces, like scrambling an egg just by shaking it. You do not have to destroy the shell to destroy the contents. Helmets cannot prevent this type of injury. Because of the wide variety of accident scenarios, it is impossible to tell when your helmet will or will not protect against injury or death.

SHORT LIST OF DO'S AND DON'TS:

1. Do choose a helmet which fits properly;
2. Do not choose a helmet which interferes with your field of vision or your ability to hear;
3. Do make sure that when the chin strap is fastened the helmet fits snugly all over your head, and low on your forehead so you can see the edge in your upper field of vision;
4. Always wear the chin strap tightly and securely fastened while riding;
5. Do not modify your helmet;
6. Do check your helmet before each ride for signs of wear or damage;
7. Do not "park" your helmet on mirror stalks or sissy bars;
8. Do not carry your helmet on the motorcycle's helmet lock while riding;
9. Replace your helmet immediately if it shows signs of wear or damage;
10. Replace your helmet immediately after an impact, even if no damage is visible;
11. Replace your helmet at least every five years;
12. Do not loan or sell your helmet, or buy a used helmet;
13. Do not wear someone else's helmet;
14. Clean your helmet with soap and water only;
15. Wear a helmet whenever you ride;
16. Ride safely, and do not take risks just because you are wearing a helmet.

HELMET SELECTION

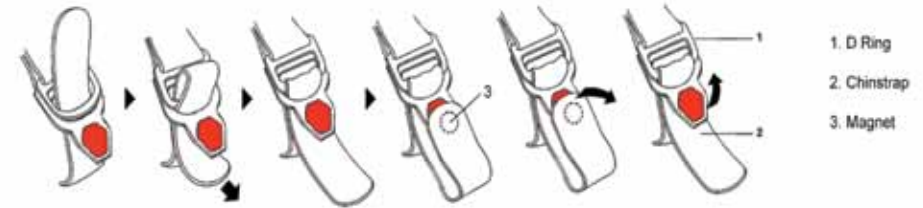
Bell manufactures a variety of helmets at different price points with different features. All helmets distributed by Bell meet or exceed the United States Department of Transportation Federal Motor Vehicle Safety Standard No. 218 ("DOT Safety Standard"). Your new Bell Star as well as most Bell models also meet the Snell Memorial Foundation ("Snell") M2010 standard.

Depending upon the type of crash you are in, a helmet certified to meet the Snell M2010 standard may provide protection that a helmet certified to meet only the DOT Safety Standard does not provide. Also, a helmet certified only to the DOT Safety Standard, may not cover as much of the head as a helmet certified to the Snell M2010 Standard. The Snell M2010 Standard has a roll off test that the DOT Safety Standard does not have. It is important for the helmet to be in place on your head to provide protection. Consequently a helmet which passes the Snell M2010 Standard may stay on your head better than a helmet certified only to the DOT Safety Standard. To pass the Snell M2010 Standard a helmet must absorb more energy, thus in some higher energy impacts a helmet certified to Snell M2010 Standard may provide protection a helmet certified to the DOT Safety Standard does not provide.

Bell recommends you purchase and wear the helmet which provides the greatest amount of coverage and the best impact protection for your intended uses.

HOW TO BEST WEAR YOUR NEW BELL STAR

The best way to put on your new Bell Star helmet is to gently pull the chin straps outward just enough to spread the helmet as you ease it over your head. If you can pull the helmet onto your head without having to spread the helmet, the helmet is too big, will not fit right, and should not be worn. With the helmet on your head, thread the loose end of the strap through the double D-rings as illustrated below. Pull on the end until the strap is snug, so it is almost uncomfortable and well back against your throat. When riding, always wear the helmet with the chin strap in this position.



⚠WARNING! The chin strap must be securely fastened and snug under your chin and against the back of your throat or it will be more likely to come off in an accident. If the helmet does not stay on, serious injury or death may result.

⚠WARNING! Do not use a chin cup or wear the strap on the point of the chin. If the chin strap is not in the proper position or used properly, the helmet will be more likely to come off. Serious personal injury or death may result.

PROPER STAR FIT

In order to work right your Bell Star must fit right. If it does not fit right it will be more likely to come off in an accident, in which case it will not provide any protection. Because many motorcyclists are killed each year when their helmets do not stay on in an accident, do not wear a Star that does not fit right. Bell manufactures the Star in five different sizes and should have one to fit your head.

THIS SECTION IS VERY IMPORTANT:

Your new Star must be snug wherever there is helmet and must be comfortable. Here are two good tests the helmet must pass:

1. Fasten the chin strap under your chin so it is snug with your mouth closed and uncomfortable to open your mouth. Grab the helmet with both hands and try to move the helmet forward and backward and from side to side. The helmet does not fit right if your skin does not move with the liner of the helmet.
2. With the chin strap snug under your chin, grab the helmet in the rear at the base and try to pull the helmet forward on your head. Do the same test except grab the helmet in the front and try to roll the helmet rearward. If the helmet comes off your head, the helmet does not fit right and you should not wear it. This is also important. Check to make sure the chin strap is tight periodically while you ride. If the chin strap has become loose, immediately stop and re-tighten the chin strap.

⚠WARNING! Do not wear a motorcycle helmet which does not fit right. Failure to follow this instruction could lead to serious personal injury or death.

Be sure to check the position of your eyes in relation to the eye opening of the helmet. Check to make sure that the helmet is positioned on your head so that you have adequate downward and upward vision to properly operate your vehicle. Adjust the position of the helmet on your head to achieve this relationship. Readjust the chin strap, and check the fit as in Steps 1 and 2 above. This is the position in which you should always wear your helmet.

PROTECT YOUR EYES

Always wear a face shield or goggles while riding.

Your new Star is equipped with a face shield that must be used at all times in order to adequately protect your face and eyes. Tinted face shields, goggles, or other forms of tinted eye protection should not be used at night or under other conditions of poor visibility. Lenses damaged by scratches will reduce visibility, especially at night, and should be replaced. Petroleum products and other solvents may impair the optical properties and reduce the mechanical strength of shields and should not be used.

⚠WARNING! Failure to use proper eye protection can cause an accident and result in serious injury or death.

Check For Adequate Vision

Always check for adequate vision. For example, when helmets are used in conjunction with goggles or other eye coverings, vision restrictions can occur. Make sure your vehicle is equipped with effective mirrors, and use them for peripheral vision to enhance your direct vision of traffic and other riding hazards. It is the responsibility of each user to assure the adequacy of his or her vision prior to using this helmet.

⚠WARNING! Never use a helmet or eye protection which restricts your vision so that you are unable to safely operate your vehicle.

Check for Adequate Hearing

Research has shown that in many cases shielding the ears from wind noise results in the ability to more accurately detect important traffic sounds (such as horns and sirens). It is the helmet user's responsibility to determine his or her ability to hear important traffic sounds while wearing and using this helmet. If you intend to use your helmet in competition, Bell recommends the use of earplugs to minimize the likelihood of permanent damage to your hearing.

Accessories

Use only those helmet accessories recommended by Bell. Using accessories not intended for use with your helmet can be dangerous.

⚠WARNING! Never rigidly attach anything to the outside of your helmet. If struck in an accident it can cause the force of the blow to be more concentrated and greatly increase your chance of injury or death. Never mount a rigid object to the inside of your helmet. If struck in an accident it could become a projectile, greatly increasing the chance of injury or death.

CARE AND CLEANING

Helmets are energy absorbing devices intended to deform, fracture, crush, and collapse as they absorb as much of the energy generated by an impact as they possibly can. They are durable, but should be treated as though they are fragile so that you will have all of the available energy absorbing materials if you should ever need them. Your Bell helmet will give you years of good service if properly cared for.

Follow these simple rules:

Never decorate your helmet with paint, decals, stickers, or tape. Use only mild soap and water to clean the outside of your helmet. Chemicals used in many items can be harmful to the outer shell of your helmet. Frequently, this damage is not visible, and can result in premature fracturing of the shell when impacted. Use only mild soap and water to clean the interior of your helmet. These liners can be washed by hand in a bucket with mild soap and water, rinsed, then air dried only. Your new Star interior is treated with a highly effective Agion® technology to fight against odor causing microorganisms but if needed, you can use a solution of bicarbonate and soda water to remove odors within your Star's comfort liner. Never use an

oven or other heating source to dry the helmet. Temperatures in excess of 150 degrees F can damage the energy absorbing inner liner. Never allow your helmet to come in contact with gasoline or other petroleum products, as this will cause serious damage to the energy absorbing inner liner and/or the outer shell of the helmet.

Storage

Your new Star requires little special care. However, it is a good idea to protect your helmet from damage if it is to be stored for a long period of time. Household pets will chew on an unattended helmet if given the chance. Helmets should be stored in a cool, dry place. Exposure to temperatures in excess of 150 degrees F can cause damage, resulting in a loss of protection. The interior of cars on sunny days can exceed 150 degrees.

Painting

Bell helmets should not be painted by anyone other than the manufacturer. Many helmet components can be seriously damaged by chemicals and/or solvents contained in most paint or by careless handling during the repainting process.

Five Year Limited Warranty

Subject to the following, Bell Sports, Inc. ("Bell") warrants to the original purchaser of each new Bell Star purchased from Bell that the helmet when new is free of defective materials and workmanship. Any claim under this warranty must be made when the defect is first discovered, and in no event more than five years after date of purchase. At Bell's option, Bell may repair or replace the helmet. Bell's liability under this warranty shall not exceed the original purchase price. Bell expressly disclaims any liability for incidental or consequential damages.

This Limited Warranty is void if any other warranty or remedy is claimed or if the helmet has been modified in any way, including but not limited to painting or the addition of stickers or decals.

All other remedies, obligations, liabilities, rights, warranties, express or implied, arising from law or otherwise, are disclaimed by Bell. This disclaimer shall be construed to include, but shall not be limited to, any claimed implied warranty of merchantability, any claimed implied warranty arising from course of performance, course of dealing or usage of trade, and any claimed implied warranty of fitness.

Some states do not allow some or all of the limitations set forth herein, or the exclusion or limitation of incidental or consequential damages. This Limited Warranty does provide the original owner with certain legal rights and recourse and the original owner may possess other rights or recourse, depending upon the state.

VELOCITY FLOW VENTILATION SYSTEM

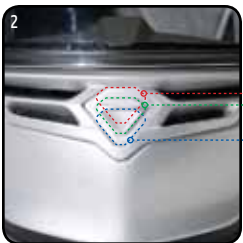
The Star's ventilation system is complex and utilizes various laws of physics to decrease internal temperature and rider fatigue all while keeping its Nutra Fog II shield clear.



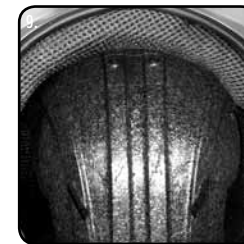
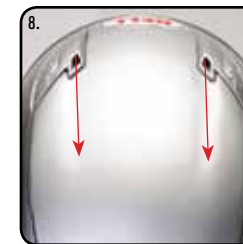
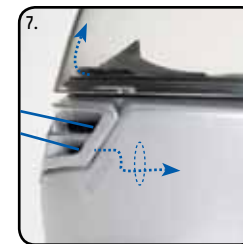
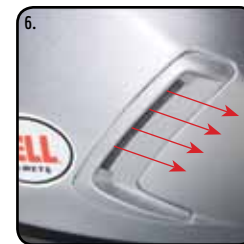
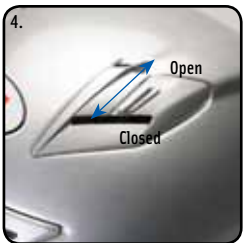
Familiarize yourself with the many ventilation features marked below.

1. Nutra Fog II Face Shield
2. 3 stage Flow Adjust™ Chin vent intake
3. 2 stage Flow Adjust™ forehead intake
4. 2 stage Flow Adjust™ top intake
5. Rear Flow Separator™/Anti-buffeting wing
6. Side hot air exhausters

7. Breath cavity
8. Channeled Shield Exhausters
9. EPS safety liner
10. Shield Defog Manifold



All Closed
Defog Only
Chin Vent/Defog



CLEANING ROAD DEBRIS FROM THE STAR'S VENT INTAKES

In some cases it may be necessary to clear road debris such as dirt and insects from the Star's vent opening. To clear debris, use a cotton swap dipped in warm water to carefully clear debris from vents. Be sure to cycle vents to ensure all debris is cleared and will not adversely effect vent operation



ROUTINE MAINTENANCE HELPS KEEP THE STAR FUNCTIONING LIKE NEW

Periodically apply small drop of silicon oil to top portion of release lever (A) and around lip of eyeport gasket (B) as needed.



BREATH GUARD INSTALL

The Star's Breath Guard helps prevents the build up of condensation onto the shield by keeping hot breath away from shield.



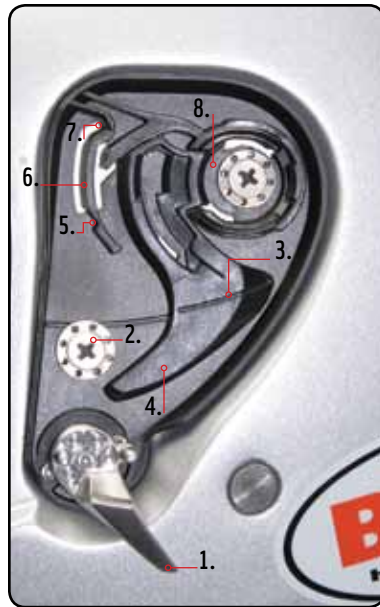
To install, insert each of the three tabs into the provided slots shown above.

INTRO TO THE STAR SHIELD/SHIELD MECHANISM

The shield mechanism was designed to make shield removal as easy as possible. This enables Star owners to quickly change shields as weather or light conditions change.



1. Shield Crack Lever
2. Titanium Hold Screws
3. Shield R&R positioning line
4. ClickRelease™ Lever
5. Crack Detent
6. Micro Detents
7. Full Open Detent
8. Shield pivot cavity
9. Shield Pivot
10. Shield hold hook



- A. Position Shield in full open position along R&R positioning line
- B. Pull down on ClickRelease™ lever until shield disengages



- C. To replace, position bottom edge of shield along shield R&R positioning line and press just over shield pivot until shield snaps into place. Be sure shield hold hook is completely engaged into shield hook slot



CHIN GUARD INSTALL

The primary role of the Star's chin curtain is to reduce wind noise and inner helmet turbulence by reducing the amount air entering the bottom of the helmet. This piece also keeps riders warm in cold weather conditions.

To install, insert each of the three tabs into the provided slots shown (A) & (B)



Properly installed chin curtain shown below



STAR'S 3-MODE SHIELD

The Star shield was designed to accommodate all types of scenarios while riding. You will find 6 different shield position options listed below.



Shield Locked



Shield unlocked



Shield Crack position #1



Shield crack position #2



Shield micro detents allow multiple shield positions



Shield in top detent

STAR'S INTERIOR COMPONENTS

All of the Star interior parts are removable and washable. Use only mild soap and water to clean the interior of your helmet. These liners can be washed in a bucket by hand with mild soap and water, rinsed, then air dried only. Your new Star interior is treated with a highly effective Agion® technology to fight against odor causing microorganisms but if needed, you can use a solution of bicarbonate and soda water to remove odors within your Star's comfort liner. Never use an oven or other heating source to dry the helmet. Temperatures in excess of 150 degrees F can damage the energy absorbing inner liner. Never allow your helmet to come in contact with gasoline or other petroleum products, as this will cause serious damage to the energy absorbing inner liner and/or the outer shell of the helmet.

| | | Soft | | | | |
|-------------|--------------|---------|---------|---------|---------|---------|
| Helmet Size | Shell Size | 55 | 50 | 45 | 40 | 35 |
| XS | Small Shell | 2024456 | 2024455 | 2024454 | 2024453 | 2024452 |
| S | | | | | | |
| MD | Medium Shell | 2024461 | 2024460 | 2024459 | 2024458 | 2024457 |
| LG | | | | | | |
| XL | Large Shell | 2024466 | 2024465 | 2024464 | 2024463 | 2024462 |
| XXL | | | | | | |

| | | Firm | | | | |
|--|--------------|---------|---------|---------|---------|---------|
| Pad sets highlighted in blue are included. | | | | | | |
| Helmet Size | Shell Size | 55 | 50 | 45 | 40 | 35 |
| XS | Small Shell | 2024471 | 2024470 | 2024469 | 2024468 | 2024467 |
| S | | 2024471 | 2024470 | 2024469 | 2024468 | 2024467 |
| MD | Medium Shell | 2024476 | 2024475 | 2024474 | 2024473 | 2024472 |
| LG | | 2024476 | 2024475 | 2024474 | 2024473 | 2024472 |
| XL | Large Shell | 2024481 | 2024480 | 2024479 | 2024478 | 2024477 |
| XXL | | 2024481 | 2024480 | 2024479 | 2024478 | 2024477 |



INTERIOR COMFORT PADDING REMOVAL

Cheekpads:

A. Gently unsnap all three cheekpad snaps. B. Turn helmet over and pull on front portion of cheekpad to disengage from front red clip.



C. Next, pull rear portion of cheekpad to disengage from rear red clip.



Top Pad:

Start by pulling on outside edge to disengage the 1st of 3 hold tabs. Next gently pull to disengage center tab. Once again, pull third tab to completely disengage the front of top liner. Lastly, unsnap two rear snaps and pull liner out of helmet.



Chin Strap Covers:

Once cheek pads and top liner are removed, unsnap chin strap covers and gently slip covers off nylon chin strap.



INSTALLING COMMUNICATION DEVICES INTO YOUR NEW STAR

We have designed your new Star to work with most major communication devices. Below is a brief description to compliment the directions provided by your communication system provider.

With cheek pad removed pull upper edge of speaker cover to disengage velcro from EPS.



Remove speaker plug and sound deadening foam from plug.



Place speaker inside speaker plug and replace back into slot in helmet EPS

Replace speaker cover.

If needed, run access wire between cheek pad base and chin bar EPS



⚠WARNING! Using any form of audio in your helmet can be dangerous and may be illegal in some states.

INTERIOR COMFORT PADDING INSTALLATION

CHIN STRAP

To install chin strap covers be sure to slide each onto correct sides as shown below (warning label opposite d-ring side) and securely snap into place



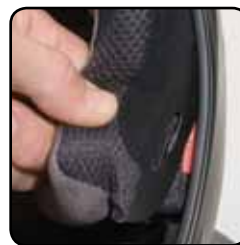
TOP PAD

Place top liner inside helmet and snap three tabs into place. Make sure corners are tucked into place. Re-install rear of top liner by snapping in two rear snaps



CHEEKPADS

Start by inserting rear cheek pad blade slot into red rear clip, followed by inserting front slot into red front clip



Lastly, snap in three cheek pad snaps to complete cheek pad assembly

