

# BARNETT Scorpion™



**Refer to Factory Service Manual for:**

- All Safety Instructions
- Removal/ Installation Instructions
- Proper Tools and Pullers
- Torque and Lubrication Specifications

## Installation Guide

**608-30-10036**

*1936-Early '84 Big Twins*

**Note:**

A hydraulic press is required to install the Scorpion clutch hub.

### Removing The Existing Clutch

1. To protect against accidental shock or start up. Disconnect both battery cables.
2. Remove primary drain plug at bottom of primary cover. Drain lubricant into suitable container.
3. Remove foot pegs, shifter lever, floorboard, etc.
4. Remove (3) three screws to remove inspection cover from primary chain cover.
5. Remove (10) ten socket set screws with washers from primary cover. Remove primary cover.
6. Refer to your Factory Manual to remove clutch basket and associated components using proper safety instructions, proper tools and pullers

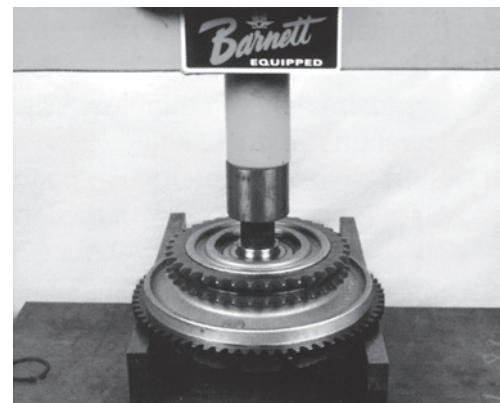


Photo 1

### Installing Your Scorpion™ Clutch

1. Using a press, install the Barnett Scorpion clutch hub and bearing hub adapter. Begin by pressing bearing into bearing hub adaptor and install large snap ring, then press bearing hub adaptor assembly into the OEM basket. Install adaptor support ring using blue thread lock and screws supplied. Torque to specifications (3-4 ft. lbs). Next, press Barnett Scorpion hub into bearing hub adaptor. Install snap ring. After pressing the Barnett Scorpion hub, check the bearing for smoothness. Refer to Illustration 1.

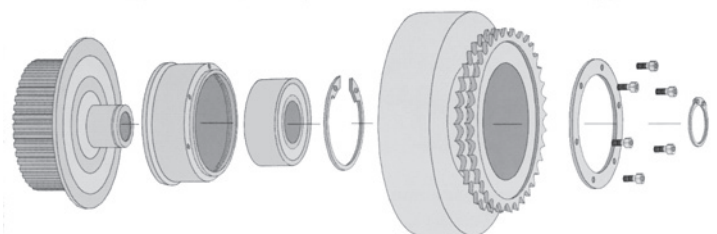


Illustration 1

(Continued on back)

## WARNING!

Always wear proper eye protection when removing or installing snap rings. Slippage may propel the ring with enough force to cause eye injury. Use correct retaining ring pliers. Verify that the tips of the pliers are not excessively worn or damaged.

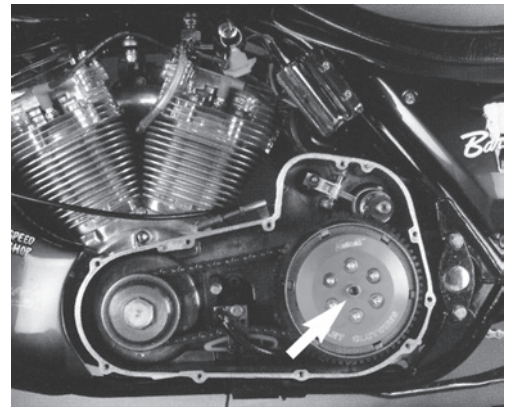


Photo 3

## Installing Your Scorpion™ Clutch

2. Re-Install the clutch basket into the primary case (with chain and the associated components) using red thread lock on the transmission main shaft prior to installing the clutch hub nut. Tighten the hub nut using the factory torque specifications (50-60 foot lbs) as instructed in your factory manual. Refer to photo 2.

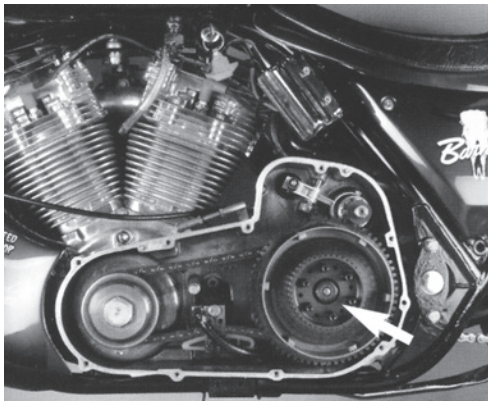


Photo 2

9. Re-install shifter lever, foot pegs, floorboards, etc.

### Clutch spring pressures

Springs	lbs of Spring Pressure
MT-7-6	348
MT-23-6	492
Using 3 ea. MT-7 and 3 ea. MT-23	420

3. Start by installing the "B" fiber plate (larger I.D.) first. Next, install the flat damper seat, then the dished damper spring with the white dot facing OUT. Follow with a steel plate, then fiber, steel, fiber, until you end with a steel plate last.
4. Install the pressure plate using (6) six MT-7 springs; (6) six spring cups and (6) six- 6mm SHCS.
5. Torque 6mm screws to 5 ft. lbs.
6. Adjust clutch as you would normally, using a center bolt adjuster. Refer to photo 3.
7. Check and adjust primary chain as needed. Re-install outer primary cover and pour proper amount and type of primary case lubricant through the clutch inspection opening.
8. Using a new O-Ring, install clutch inspection cover in chain case cover. Install (3) three socket screws using new rubber sealing washers. Tighten screws to 4-5 ft. lbs.

