

2016 COLLECTION

AT AXO WE HAVE THE SAME PASSION FOR TWO WHEELS AS ALL OF OUR RIDERS DO. IT'S WHAT WE LIVE, EAT AND BREATHE. HAVING THE PASSION IS ONE THING, BUT USING THE PASSION TO CREATE THE MOST DURABLE AND COMFORTABLE PRODUCTS FOR OUR RIDERS IS ANOTHER. FOR OVER 35 YEARS WE HAVE COMBINED THE LATEST TECHNOLOGY AND DESIGNS TO MANUFACTURE THE BEST RIDING APPAREL AND FOOTWEAR OUT THERE. FROM AMATEURS TO WORLD CHAMPIONS, WE HAVE THE BACKING OF RIDERS FROM ALL DISCIPLINES AND CONTINUALLY WORK TO WITH THEM TO BRING YOU THE BEST POSSIBLE PRODUCT.



---

AXO 2016  
MX  
COLLECTION

---



---

## DISCOVER OUR MX GEAR

---



---

## CONTENTS

---

- 08 Footwear
- 16 Gear
- 30 Gloves
- 34 Jackets
- 37 Protectors
- 46 Socks
- 49 Bags



FOOTWEAR HERITAGE



# A2

- ✓ New reinforced nylon anti-torsion brace designed with a hinge system
- ✓ Traditional easy-to-replace sole
- ✓ AXO engineered aluminum buckles for an enhanced lock/unlock operation
- ✓ Adjustable buckle base positioning
- ✓ 3D shaped mesh lining



EN1254:2010  
Level 1 1 1

DUAL PIVOT  
SYSTEM

NEW  
COLORS



SKU:	Color:	US size:										
11400-00	WHITE	6	7	8	9	10	10.5	11	12	13		
11400-02	WHITERED	6	7	8	9	10	10.5	11	12	13		
11400-03	WHITE/BLUE	6	7	8	9	10	10.5	11	12	13		
11400-05	BLACK	6	7	8	9	10	10.5	11	12	13		
11400-51	BLACK/FLUO/YELLOW	6	7	8	9	10	10.5	11	12	13		
11400-54	BLACK/FLUO/GREEN	6	7	8	9	10	10.5	11	12	13		
11400-56	BLACK/FLUO/ORANGE	6	7	8	9	10	10.5	11	12	13		





# DRONE



- ✔ Constructed with high quality materials chosen for their weight, strength and value
- ✔ Optimized plastics are thicker where support and reinforcement are needed and tapered in non-critical areas
- ✔ Durable synthetic boot material resists wear, requires less breaking in and retains its shape longer
- ✔ Re-designed plastic buckle shape for easier locking and unlocking



## EASY TO CLOSE AND RELEASE



SKU: 11000-05 | Color: BLACK | US size: 7 8 9 10 10.5 11 12 13 14

# SLAMMER

- ✔ Leather and reinforced nylon upper
- ✔ Ergonomic thermoformed inserts in ankle area for reinforcement
- ✔ AXD engineered aluminum buckles for an enhanced lock/unlock operation
- ✔ Lugged soles
- ✔ Heat guard on the inside



## LUGGED SOLE



SKU: 11215-05 | Color: BLACK | US size: 7 8 9 10 10.5 11 12 13

# DRONE JR

- ✔ Plastic heat guard
- ✔ 1-buckle height shin plate
- ✔ Gaiter to repel dust
- ✔ Generous fit in the toe-box
- ✔ Constructed with high quality materials that are chosen for their weight and strength for the best possible combination



SKU: 11001-05    Color: BLACK    US size: 3 4 5 6

# DRONE PEE-WEE

- ✔ 1-buckle height shin plate
- ✔ Gaiter to repel dust
- ✔ Generous fit in the toe-box
- ✔ Constructed with high quality materials that are chosen for their weight and strength for the best possible combination



SKU: 11002-05    Color: BLACK    US size: K10 K11 K12 K13 1 2





EMOTION  
IS ENERGY IN MOTION





# MOTION



## JERSEY

- 100% polyester
- Stain and odor resistant with fully sublimated graphics
- Generous fit
- Long tail panel to stay tucked in
- V neck construction

## PANTS

- AXD's own slip fit knee technology and thigh pattern suspends the thigh from the knee allowing the knee panel to operate independently from the leg of the pant
- Combined 600 denier Polyester thigh and crotch panels offer a comfortable and abrasion-resistant shell
- Genuine leather inner knee panels offer supreme protection
- 1000 denier Nylon is layered on the rear of the pants to resist peeling and snags while gripping seats
- Bottom of the pants feature an endless cuff which allows for a snug fit in the boot without any discomfort

NEW RE-DESIGNED PATTERN,  
FEATURING PADDED HIP AREAS.



SKU:	Color:	US size:				
14215-04	WHITE/GREEN	S	M	L	XL	XXL
14215-23	RED/BLUE	S	M	L	XL	XXL
14215-31	BLUE/YELLOW	S	M	L	XL	XXL
14215-56	WHITE/BLACK/ORANGE	S	M	L	XL	XXL

SKU:	Color:	US size:									
13215-04	WHITE/GREEN	28"	30"	32"	34"	36"	38"	40"	42"	44"	
13215-23	RED/BLUE	28"	30"	32"	34"	36"	38"	40"	42"	44"	
13215-31	BLUE/YELLOW	28"	30"	32"	34"	36"	38"	40"	42"	44"	
13215-56	WHITE/BLACK/ORANGE	28"	30"	32"	34"	36"	38"	40"	42"	44"	





### JERSEY

- 100% polyester
- Stain and odor resistant with fully sublimated graphics
- Generous fit
- Long tall panel to stay tucked in
- V neck construction

### PANTS

- AXO's own slip fit knee technology and thigh pattern suspends the thigh from the knee allowing the knee panel to operate independently from the leg of the pant
- Combined 600 denier Polyester thigh and crotch panels offer a comfortable and abrasion-resistant shell
- Genuine leather inner knee panels offer supreme protection
- 1000 denier Nylon is layered on the rear of the pants to resist peeling and snags while gripping seats
- Bottom of the pants feature an endless cuff which allows for a snug fit in the boot without any discomfort

NEW RE-DESIGNED PATTERN,  
FEATURING PADDED HIP AREAS.

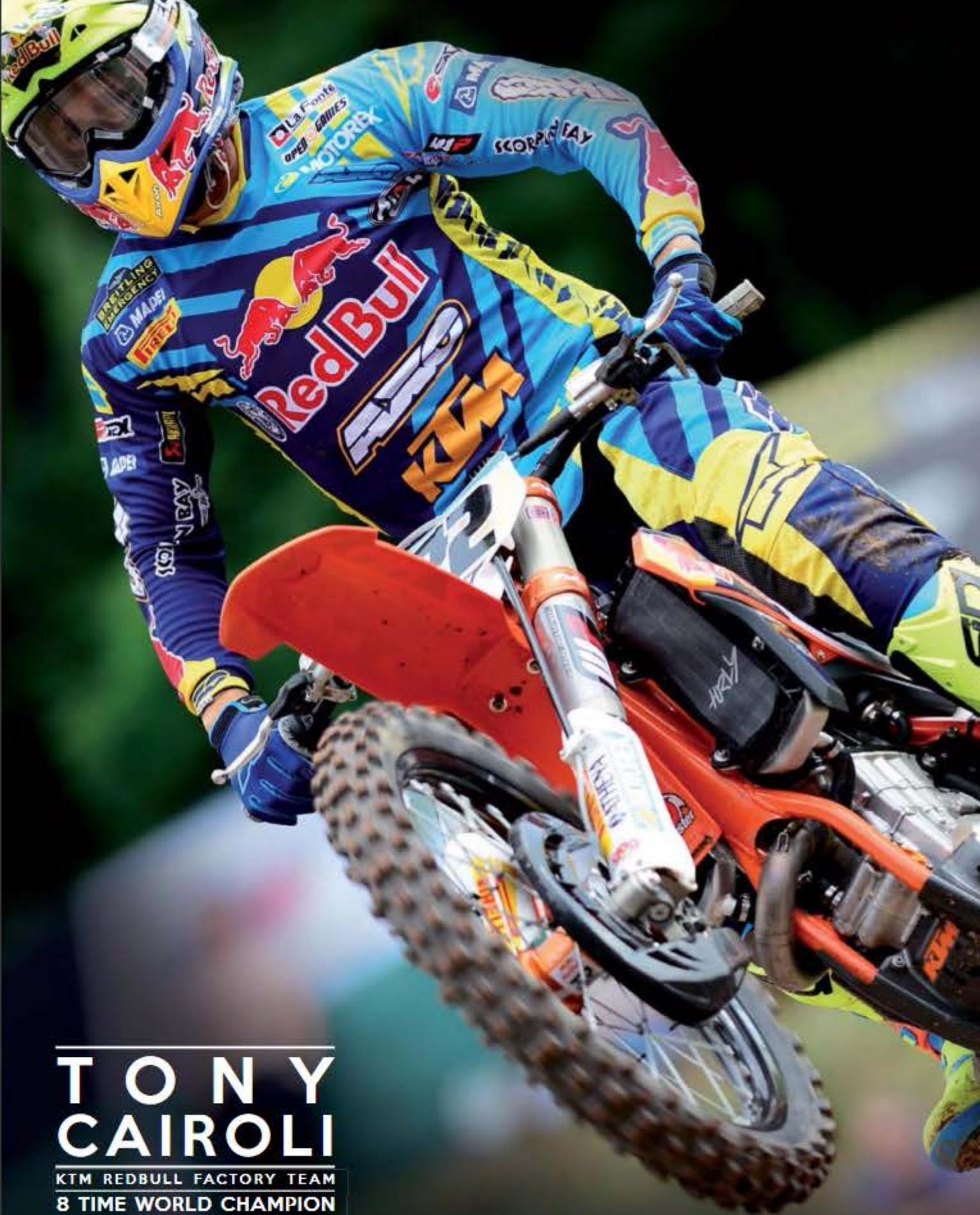


SKU:	Color:	US size:				
14215-03	WHITE/BLUE	S	M	L	XL	XXL
14215-63	WHITE/ORANGE/BLUE	S	M	L	XL	XXL

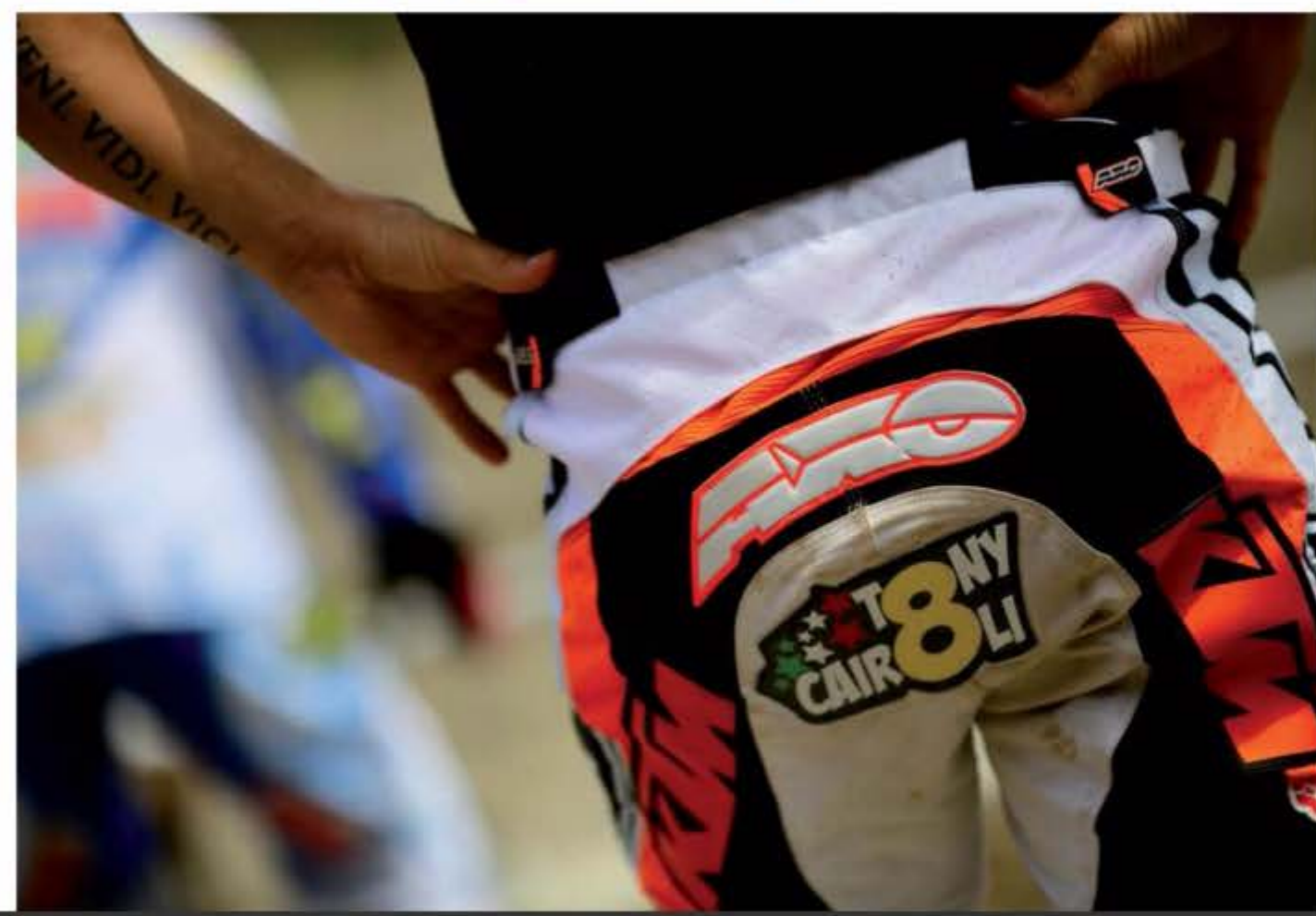
SKU:	Color:	US size:								
13215-03	WHITE/BLUE	28"	30"	32"	34"	36"	38"	40"	42"	44"
13215-63	WHITE/ORANGE/BLUE	28"	30"	32"	34"	36"	38"	40"	42"	44"

# MOTION





**TONY  
CAIROLI**  
KTM REDBULL FACTORY TEAM  
8 TIME WORLD CHAMPION



# DYEMAX MAMBA



## JERSEY

- 100% polyester
- Stain and odor resistant with fully sublimated graphics
- Generous fit
- Long tail panel to stay tucked in
- V neck construction

## PANTS

- Durable nylon construction
- Leather inner knee panel
- Sublimated graphics and TPR logos
- Polyester lining
- Front perforated panels

NEW RE-DESIGNED PATTERN,  
FEATURING PADDED HIP AREAS.



SKU:	Color:	US size:				
14016-03	WHITE/BLU	S	M	L	XL	XXL
14016-52	BLACK/RED	S	M	L	XL	XXL
14016-54	BLACK/GREEN	S	M	L	XL	XXL
14016-56	BLACK/ORANGE	S	M	L	XL	XXL

SKU:	Color:	US size:									
13016-03	WHITE/BLU	28"	30"	32"	34"	36"	38"	40"	42"	44"	
13016-52	BLACK/RED	28"	30"	32"	34"	36"	38"	40"	42"	44"	
13016-54	BLACK/GREEN	28"	30"	32"	34"	36"	38"	40"	42"	44"	
13016-56	BLACK/ORANGE	28"	30"	32"	34"	36"	38"	40"	42"	44"	



# TRANS AM



## JERSEY

- 100% polyester
- Stain and odor resistant with fully sublimated graphics
- Generous fit
- Long tall panel to stay tucked in
- V neck construction

## PANTS

- Durable nylon construction
- Leather inner knee panel
- Sublimated graphics and TPR logos
- Polyester lining
- Front perforated panels

SKU:	Color:	US size:				
14516-23	RED/BLUE/WHITE	S	M	L	XL	XXL
14516-51	BLACK/WHITE/YELLOW	S	M	L	XL	XXL

SKU:	Color:	US size:										
13516-23	RED/BLUE/WHITE	28"	30"	32"	34"	36"	38"	40"	42"	44"		
13516-23	BLACK/WHITE/YELLOW	28"	30"	32"	34"	36"	38"	40"	42"	44"		



# PRODIGY JR



## JERSEY

- ✓ 100% polyester
- ✓ Stain and odor resistant with fully sublimated graphics
- ✓ Generous pattern
- ✓ Longer tail panel to stay tucked in
- ✓ V neck construction

SKU:	Color:	US size:			
14616-32	BLUE/WHITE/RED	S	M	L	XL
14616-54	BLACK/FLUO GREEN	S	M	L	XL
14616-93	GRAY/BLUE	S	M	L	XL

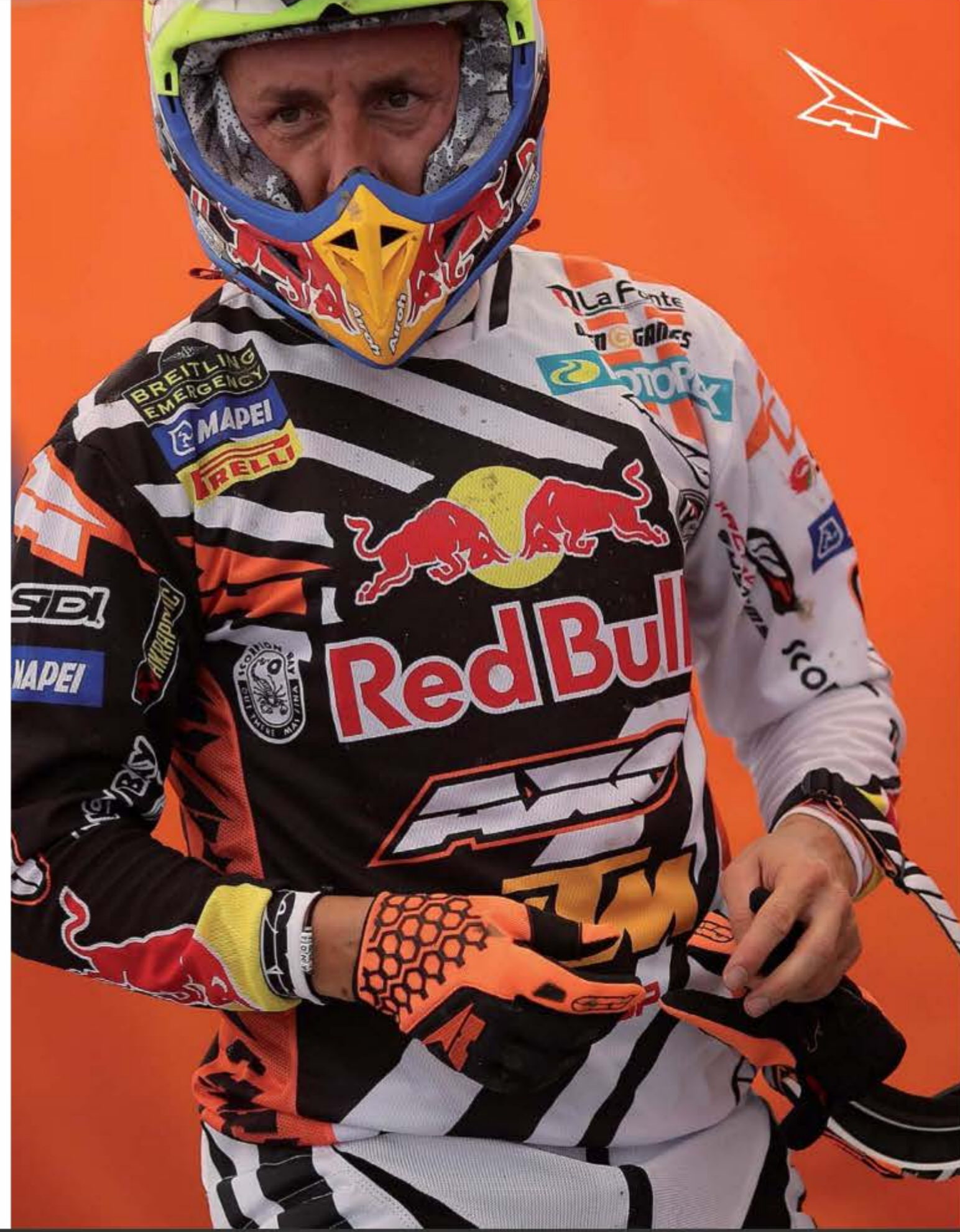
## PANTS

- ✓ Durable nylon construction
- ✓ Side waist padded "ribs"
- ✓ Silky liner with stretch waist gripping fit
- ✓ Wide knee rib for unrestricted knee flex
- ✓ Stretch calf panels
- ✓ Designed for optimum comfort and safety

SKU:	Color:	US size:				
13616-32	BLUE/WHITE/RED	20"	22"	24"	26"	28"
13616-54	BLACK/FLUO GREEN	20"	22"	24"	26"	28"
13616-93	GRAY/BLUE	20"	22"	24"	26"	28"



HANDS UP FOR  
THE CHAMPION





# HEXA

- ✔ Elastic single layer synthetic fabric on top of hand
- ✔ Silicone printing for better grip
- ✔ Thermoformed padded areas on knuckles
- ✔ Cuff hook and loop fastener closure
- ✔ Soft padding on palm



SKU:	Color:	US size:					
12415-51	BLACK/FLUO YELLOW	8	9	10	11	12	13
12415-56	BLACK/FLUO ORANGE	8	9	10	11	12	13
12415-05	BLACK/BLUE	8	9	10	11	12	13
12415-25	BLACK/RED	8	9	10	11	12	13
12415-35	BLACK/WHITE	8	9	10	11	12	13



# ROOKIE

- ✔ Elastic single layer synthetic fabric on top of hand
- ✔ Silicone printing for better grip
- ✔ Single layer synthetic suede palm
- ✔ Lycra forchettes
- ✔ Cuff hook and loop fastener closure
- ✔ Sublimated graphics



SKU:	Color:	US size:				
12515-00	WHITE	8	9	10	11	12
12515-22	RED	8	9	10	11	12
12515-33	BLUE	8	9	10	11	12
12515-55	BLACK	8	9	10	11	12





# RIDE & RIDE JR

- ✔ Constructed with a long lasting synthetic palm along with internal padding to reduce fatigue
- ✔ Made with stretch materials that offer an ultra-light feel
- ✔ Vented knuckles and fingers provide air flow for warm conditions
- ✔ Form fitting curved finger construction
- ✔ Adjustable wrist closure for a secure fit each time



ADULT

SKU:	Color:	US size:						
12115-02	RED	7	8	9	10	11	12	13
12115-03	BLUE	7	8	9	10	11	12	13
12115-05	BLACK	7	8	9	10	11	12	13

JUNIOR

SKU:	Color:	US size:				
12215-02	RED	3/4	5	6	7	8
12215-03	BLUE	3/4	5	6	7	8
12215-05	BLACK	3/4	5	6	7	8
12215-06	ORANGE	3/4	5	6	7	8

# SX

- ✔ Slip on glove
- ✔ Single layer synthetic suede palm
- ✔ Single layer synthetic fabric top
- ✔ Silicone gripper fingertips
- ✔ Lycra forchettes



SKU:	Color:	US size:					
12000-05	BLACK	8	9	10	11	12	13

# GLIDE

- ✔ Constructed using a blend of high tenacity polyamide fabrics
- ✔ Anti-bacterial and anti-sweat perforated polyester lining
- ✔ Removable sleeves
- ✔ Vents on front, arms and back
- ✔ Large internal and external pockets
- ✔ Back pocket for hydro pack and frontal grommet for hose
- ✔ Arms, waist and bottom adjustments
- ✔ Reflective inserts
- ✔ Elastic rib on elbows area



NECK BRACE  
POCKET



SKU:	Color:	US size:
15201-02	RED	S M L XL XXL XXXL
15201-03	BLUE	S M L XL XXL XXXL
15201-05	BLACK	S M L XL XXL XXXL
15201-08	ORANGE	S M L XL XXL XXXL





# RHINO VEST

- ✓ Inner ergonomic chest and back padding
- ✓ Removable padding from Inner pockets
- ✓ Neck brace compatible
- ✓ BI-elastic breathable material
- ✓ Easy washing with removable padding



NECK BRACE  
POCKET



SKU: 16070-05 | Color: BLACK | US size: XS/S M/L XL/OXL

# MOTO VEST JR

- ✓ 100% nylon shell fabric
- ✓ 100% polyester lining
- ✓ 13mm (1/2 Inch) foam Insert
- ✓ Removable name/number plate
- ✓ Frontal hook and loop fastener closure
- ✓ Adjustable shoulders and sides
- ✓ Neck brace compatible



SKU: 16551-05 | Color: BLACK | US size: M L

# AIR CAGE

- ✔ Jacket made with mesh material and plastic protectors
- ✔ Overlapping PU molded back plate system
- ✔ Chest plates, biceps and lower arm areas cover all first impact areas
- ✔ Built in kidney belt
- ✔ Front opening zipper



SKU: 16020-05 | Color: BLACK | US size: M L XL XXL XXXL

# AIR CAGE JR

- ✔ Now in three junior sizes to fit all young riders
- ✔ Jacket made with mesh material and plastic protectors
- ✔ Overlapping PU molded back plate system
- ✔ Chest plates, biceps and lower arm areas cover all first impact areas
- ✔ Built in kidney belt
- ✔ Front opening zipper



SKU: 16022-55 | Color: BLACK | US size: S M L



# DUO ROOST GUARD

- ✔ Injected PU front and back panels
- ✔ Polyester padding
- ✔ Adjustable side straps
- ✔ Adjustable shoulder straps
- ✔ Ventilation holes



ADULT  
SKU: 16502-00 | Color: WHITE | US size: M L XL XXL

# DUO ROOST GUARD JR

- ✔ Injected PU front and back panels
- ✔ Polyester padding
- ✔ Adjustable side straps
- ✔ Adjustable shoulder straps
- ✔ Ventilation holes



JUNIOR  
SKU: 16503-08 | Color: WHITE | US size: ONE SIZE

## NEW PEE WEE LINE >>



## PEE WEE ROOST GUARD

- ✔ Plastic shoulder shells with breathable padding
- ✔ Elastic adjustable straps



SKU: 16552-85 | Color: BLACK | US size: S/M L/XL

## PEE WEE ELBOW GUARD

- ✔ Ergonomic elbow padding
- ✔ Breathable design
- ✔ Adjustable elastic straps



SKU: 16061-58-330 | Color: BLACK | US size: JR

## ELBOW CUPS

- ✔ Polypropylene elbow and forearm protection
- ✔ Removable Inner foam
- ✔ Elastic straps



ADULT  
SKU: 16060-05-630 | Color: BLACK | US size: L

JUNIOR  
SKU: 16060-05-330 | Color: BLACK | US size: JR

## PEE WEE KNEE GUARD

- ✔ Ergonomic knee guard with breathable padding
- ✔ Plastic shell
- ✔ Adjustable elastic straps



SKU: 16731-58-330 | Color: BLACK | US size: JR

## DE LUXE KNEE CUPS

- ✔ Polypropylene knee and shin protection
- ✔ Removable Inner foam
- ✔ Elastic straps



ADULT  
SKU: 16730-05-630 | Color: BLACK | US size: L

JUNIOR  
SKU: 16730-05-330 | Color: BLACK | US size: JR



2 0 1 6

TMKP

CE

» **ALL NEW RE-ENGINEERED TMKP!** »

The original only from AXO. Now CE approved.



# TMKP

- Two engineered polypropylene shells with lateral hinge for total movement
- Removable comfort paddings to allow washing
- Adjustable elastic straps
- Newly designed closure hooks
- CE certified knee guard in accordance with the Norm EN 1621-1:2012 K type A Level 1



SKU: 16701-55-830  
Color: BLACK  
US size: L  
SKU: 16701-11-630  
Color: FLUO YELLOW  
US size: L

## TMKP JR

- Two engineered polypropylene shells with lateral hinge for total movement
- Removable comfort paddings to allow washing
- Adjustable elastic straps



SKU: 16700-05-330  
Color: BLACK  
US size: JR



## SX BELT

- Polypropylene frame stitched on foam
- Perforation holes
- Elastic straps
- hook and loop fastener closure



SKU: 16621-05  
Color: BLACK  
US size: S M L

## SUPERBELT JR

- Kidney belt for younger riders
- hook and loop fastener closure for easy access and fitting



SKU: 16620-05-330  
Color: BLACK  
US size: JR





# SOCKS

- 70% Acrylic, 20% Nylon and 10% Lycra composition
- Ribbed arch and ankle support
- Extra padding on the heel, toe and shin
- One size fits most
- Superior moisture and wicking management

## PRODIGY



SKU: 20126-99-812 | Size: ONE SIZE

## PRODIGY KIDS



SKU: 20127-99-307 | Size: ONE SIZE

## MOTO PALUZA



SKU: 20111-05-000 | Size: ONE SIZE

## DIAMOND



SKU: 20116-99-812 | Size: ONE SIZE

## SKULLY



SKU: 20212-99-812 | Size: ONE SIZE

## MX SOCKS KIDS



KIDS  
SKU: 18620-05-230 | Size: ONE SIZE

## MOTION



SKU: 20124-99-812 | Size: ONE SIZE

## MOTION KIDS



SKU: 20125-99-307 | Size: ONE SIZE

## MX LONG SOCKS



SKU: 20152-99-812 | Size: ONE SIZE

## CIRCUIT



SKU: 20122-99-812 | Size: ONE SIZE

## LONG SOCKS KIDS



SKU: 20153-99-307 | Size: ONE SIZE

## BONEZ



SKU: 18600-05-630 | Size: ONE SIZE

## NEXT NO SHOW

70% Cotton, 20% Nylon, 10% Lycra



3 PACK  
SKU: 20002-00-620 | Color: WHITE | Size: S/M - 4/8  
20002-00-640 | Color: WHITE | Size: L/XL - 9/13  
20002-05-620 | Color: BLACK | Size: S/M - 4/8  
20002-05-640 | Color: BLACK | Size: L/XL - 9/13

## NEXT CREW

70% Cotton, 20% Nylon, 10% Lycra



SKU: 20003-00-620 | Color: WHITE | Size: S/M - 4/8  
20003-00-640 | Color: WHITE | Size: L/XL - 9/13  
20003-05-620 | Color: BLACK | Size: S/M - 4/8  
20003-05-640 | Color: BLACK | Size: L/XL - 9/13

# WHEELIE

- Features an extendable handle for easy usage
- Multiple compartments for storage
- Durable wheels for quick movement with little effort
- Constructed with heavy Nylon materials
- 35" x 15" x 18"



SKU: 29400-93-000 | Color: BLACK/BLUE

# WEEKENDER

- Constructed with 100% Nylon
- Separate vented storage areas
- Abrasion resistant base material
- Heavy duty zippers and carrying handles with hook and loop fastener grip
- Available In 5 colors: Black, Blue, Red, Black/Orange and Black/Green
- 25" x 18" x 21"



NEW  
COLORS



SKU: | Color:  
 29201-02-000 RED  
 29201-03-000 BLUE  
 29201-05-000 BLACK  
 29201-56-000 BLACK/GREEN  
 29202-25-000 RED/BLACK  
 29202-33-000 BLUE/BLUE  
 29202-84-000 GRAY/GREEN  
 29202-86-000 GRAY/ORANGE



## COMMUTER

- Heavy duty Nylon construction
- Spacious Inner pocket has enough room to host a helmet
- Padded shoulder straps for added comfort
- Side mesh pockets for extra storage
- Includes adjustment straps for extra security while riding
- Available in 3 colors: Black, Red and Blue



SKU: 29101-02-000  
29101-03-000  
29101-05-000

Color: RED  
BLUE  
BLACK

## CREW

- Reflective AXO logo
- Mesh side pockets
- Spacious Inner pouch
- Pull out Nylon cover for rainy weather
- Front zipper pouch for extra storage



WATERPROOF



SKU: 29102-05-000

Color: BLACK

## HYDRO PACK

- 68 oz (2 liter) bladder for water storage
- 2 small stash pockets for storage space
- Clean and basic look that is easy to access and use



SKU: 29500-08-000

Color: GRAY

## TOOL BAG

- Sturdy ballistic Nylon construction
- Equipped with multiple Inner and side pockets
- Impact resistant front buckle

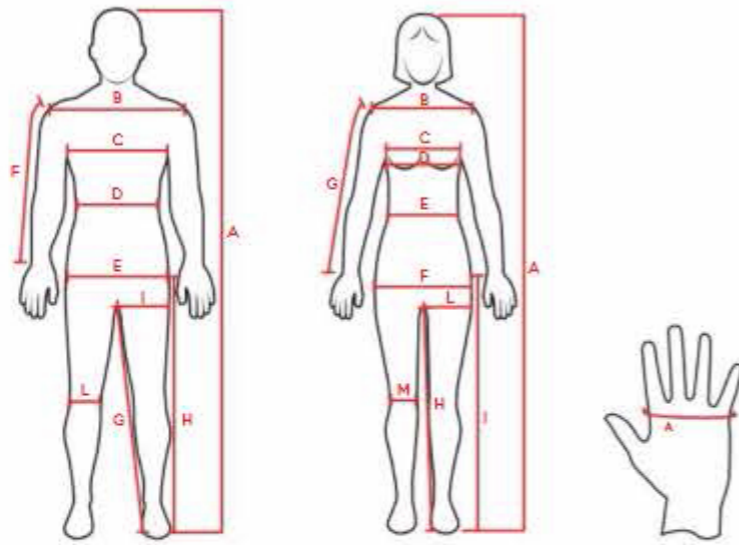


SKU: 29300-05-000

Color: BLACK



# AXO SIZE CHARTS



These charts are for reference only.

We recommend to try the product to be sure about your size.

## MX ADULT PANT

INCH		CM		
(D) WAIST		(D) WAIST		
FROM	TO	FROM	TO	
28/44	28.3	29.9	72	76
30/46	29.9	31.5	76	80
32/48	31.5	33.1	80	84
34/50	33.1	34.6	84	88
36/52	34.6	36.2	88	92
38/54	36.2	37.8	92	96
40/56	37.8	39.4	96	100
42/58	39.4	40.9	100	104
44/60	40.9	42.5	104	108
(E) HIP		(E) HIP		
FROM	TO	FROM	TO	
28/44	34.3	35.8	87	91
30/46	35.8	37.4	91	95
32/48	37.4	39	95	99
34/50	39	40.6	99	103
36/52	40.6	42.1	103	107
38/54	42.1	43.7	107	111
40/56	43.7	45.3	111	115
42/58	45.3	46.9	115	119
44/60	46.9	48.4	119	123
(G) INSEAM		(G) INSEAM		
FROM	TO	FROM	TO	
28/44	29.5	29.9	75	76
30/46	30.3	30.7	77	78
32/48	31.1	31.5	79	80
34/50	31.9	32.3	81	82
36/52	32.7	33.1	83	84
38/54	33.5	33.9	85	86
40/56	33.5	33.9	85	86
42/58	34.3	34.8	87	88
44/60	34.3	34.6	87	88
(H) THIGH		(H) THIGH		
FROM	TO	FROM	TO	
28/44	20.5	20.9	52	53
30/46	21.3	21.7	54	55
32/48	22	22.4	56	57
34/50	22.8	23.2	58	59
36/52	23.6	24	60	61
38/54	24.4	24.8	62	63
40/56	25.2	25.6	64	65
42/58	26	26.4	66	67
44/60	26.8	27.2	68	69

## MX JR PANT

INCH		CM		
(D) WAIST		(D) WAIST		
FROM	TO	FROM	TO	
20/36	18.9	20.9	48	53
22/38	20.9	22.8	53	58
24/40	22.8	24.8	58	63
26/42	24.8	26.8	63	68
28/44	26.8	28.7	68	73
(G) INSEAM		(G) INSEAM		
FROM	TO	FROM	TO	
20/36	22.4	22.8	57	58
22/38	22.8	23.2	58	59
24/40	23.6	25.2	60	64
26/42	25.2	26.8	64	68
28/44	26.8	28.3	68	73

## MX ADULT JERSEY

INCH		CM		
(C) CHEST		(C) CHEST		
FROM	TO	FROM	TO	
S	35.43	37.80	90	96
M	38.19	40.94	96	104
L	41.34	44.09	104	112
XL	44.49	47.24	112	120
2XL	47.64	50.39	120	128
(D) WAIST		(D) WAIST		
FROM	TO	FROM	TO	
S	29.92	32.28	76	82
M	32.68	35.43	83	90
L	35.83	38.98	91	99
XL	39.37	42.53	100	107
2XL	42.52	44.88	108	114
(F) ARM		(F) ARM		
FROM	TO	FROM	TO	
S	18.11	19.29	46	49
M	19.89	20.87	50	53
L	21.36	22.44	54	57
XL	22.83	24.41	58	62
2XL	24.80	25.59	63	65

## MX JR JERSEY

INCH		CM		
(C) CHEST		(C) CHEST		
FROM	TO	FROM	TO	
M	26.4	27.4	67	70
L	28.6	29.7	73	76
XL	30.7	31.8	78	81
2XL	32.8	33.9	84	87
(D) WAIST		(D) WAIST		
FROM	TO	FROM	TO	
M	19.2	22.8	49	58
L	22.8	26.4	58	67
XL	26	29.7	66	75
2XL	29.7	33.3	75	84
(F) ARM		(F) ARM		
FROM	TO	FROM	TO	
M	10.6	12.6	27	32
L	11	13	28	33
XL	12.4	14.7	31	37

## CYCLING KNEE PADS

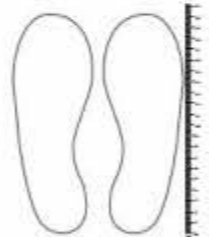
INCH		CM		
(A) KNEES CIRC.		(A) KNEES CIRC.		
FROM	TO	FROM	TO	
S	14.6	15.3	37	39.5
M	15.3	16.7	39	43
(B) KNEES CIRC.		(B) KNEES CIRC.		
FROM	TO	FROM	TO	
S	14.6	15.3	37	39.5
M	15.3	16.7	39	43
L	16.7	18.1	43	46
XL	18.1	19.5	46	50
(C) KNEES CIRC.		(C) KNEES CIRC.		
FROM	TO	FROM	TO	
S	12.6	13.9	32	35.5
M	13.9	15.2	35.5	39
L	15.2	16.5	39	42.5
XL	16.5	17.8	42.5	46

## GLOVES

INCH		CM		
(A) HANDS CIRC.		(A) HANDS CIRC.		
FROM	TO	FROM	TO	
S	6.7	7.1	17	18.5
M	7.1	7.5	18.5	19.5
L	7.5	7.9	19.5	20.5
XL	7.9	8.3	20.5	21.5
2XL	8.3	8.7	21.5	22.5

## FOOTWEAR

KIDS											MAN AND WOMAN												
MeV USA	10K	11K	12K	13K	1	2	2.5	3	4	5	6	7	7.5	8	9	10	10.5	11	12	13	14	15	
Wp USA	-	-	-	-	-	-	-	-	4	5	6	7	8	8.5	9	10	11	-	-	-	-	-	-
UK	9	10	11	12	13	1	1.5	2	3	4	5	6	6.5	7	8	9	9.5	10	11	12	13	14	
EUR	28	29	30	31	33	34	35	36	37	38	39	40	41	42	43	44	45	46	47	48	49	50	
CM	16	17	18	19	20	21	21.5	22.5	23	24	25	25.5	26	27	28	28.5	29	30	31	32	33		



DISCOVER ↕  
THE 2016  
ROAD COLLECTION

Due to production needs and/or improvements of the quality and performance of its products, AXO America, Inc. reserves the right to introduce changes to any of its items without any previous notice. Products may differ in some details from the photographs.



AXO  
2016 COLLECTION

AT AXO WE HAVE THE SAME PASSION FOR TWO WHEELS AS ALL OF OUR RIDERS DO. IT'S WHAT WE LIVE, EAT AND BREATHE. HAVING THE PASSION IS ONE THING, BUT USING THE PASSION TO CREATE THE MOST DURABLE AND COMFORTABLE PRODUCTS FOR OUR RIDERS IS ANOTHER. FOR OVER 35 YEARS WE HAVE COMBINED THE LATEST TECHNOLOGY AND DESIGNS TO MANUFACTURE THE BEST RIDING APPAREL AND FOOTWEAR OUT THERE. FROM AMATEURS TO WORLD CHAMPIONS, WE HAVE THE BACKING OF RIDERS FROM ALL DISCIPLINES AND CONTINUALLY WORK TO WITH THEM TO BRING YOU THE BEST POSSIBLE PRODUCT.



AXO 2016  
ROAD  
COLLECTION



---

## DISCOVER OUR ROAD COLLECTION

---



08

14

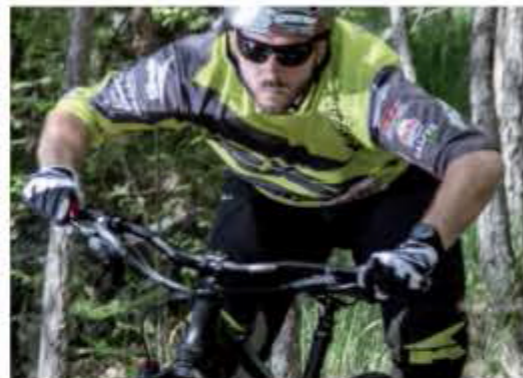


16

22



25



28



34

---

## CONTENTS

---

- 08 Footwear
- 14 Race Suits
- 16 Jackets
- 22 Gloves
- 25 Waterproof
- 28 Cycling Line
- 34 Accessories



BEN YOUNG - MotoAmerica Supersport



SHELINA MOREDA - MotoAmerica

Photo credit: Tracy Holman

# ARAGON

- High performance road racing boot with a lateral anti-torsion brace system
- PU shin, calf and heel guards with a metal anti-shock heel insert
- Removable and interchangeable plastic shin and toe sliders
- Ankle support hinge system
- Tested at over 180 mph to ensure quality and safety
- Rubber racing sole designed by AXD
- BOA® technology allows riders to find the perfect fit



**THE BOA DIALED IN FOR LIFE™ GUARANTEE**  
Boa Technology guarantees the Boa Lacing System will last for the lifetime of the product.



SKU	Color	US size									
3100-S1	BLACK/FLUO-YELLOW	7	8	9	10	10.5	11	12	13		
3100-S8	BLACK/SILVER	7	8	9	10	10.5	11	12	13		



**HIGH PERFORMANCE RACING BOOTS**





# PRIMATO

- ✓ Synthetic outer construction resists breaking down and deformation of material
- ✓ AXO Injected sole molding provides grip and control
- ✓ Mesh lining and internal padding ensure comfort
- ✓ Reflective 3M<sup>®</sup> piping placed along the external zipper closure
- ✓ Mid-Calf height, standard for racing application



SKU: 31301-05 Color: BLACK US size: 7 8 9 10 11 12 13

# STRIKER 9to5

- ✓ BOA<sup>®</sup> technology allows riders to find the perfect fit
- ✓ Built for maximum comfort and security on and off the bike
- ✓ Vibram sole, made of a specific rubber compound
- ✓ Ergonomic ankle protection
- ✓ Durable shift guard



SKU: 31202-05 Color: BLACK US size: 7 8 9 10 11 12 13



**THE BOA DIALED IN FOR LIFE™ GUARANTEE**  
Boa Technology guarantees the Boa Lacing System real and loose for the lifetime of the product.



# ROAD WP

- ✓ Water resistant leather upper with leather shift gear
- ✓ Internal plastic shin guard and ankle guard
- ✓ And-bacterial and and-sweat mesh lining with waterproof membrane
- ✓ Synthetic leather front and back bellows
- ✓ Anatomical removable antibacterial foot bed



SKU: 31410-05 Color: BLACK US size: 5 6 7 8 9 10 11 12 13

# INDY

- Full grain cowhide leather
- Anti-bacterial and anti-sweat removable polyester lining with elastic Inserts
- Anti-abrasion shoulder and elbow aluminum caps
- Stretch Kennyspan® under the sleeve, crotch and calf areas for a comfortable fit
- SAS-TEC® CE protection

SAS-TEC



SKU	Color	US size
33016-05	BLACK	48 50 52 54 56 58 60
33016-00	WHITE	48 50 52 54 56 58 60
33016-03	WHITE/BLUE/RED	48 50 52 54 56 58 60

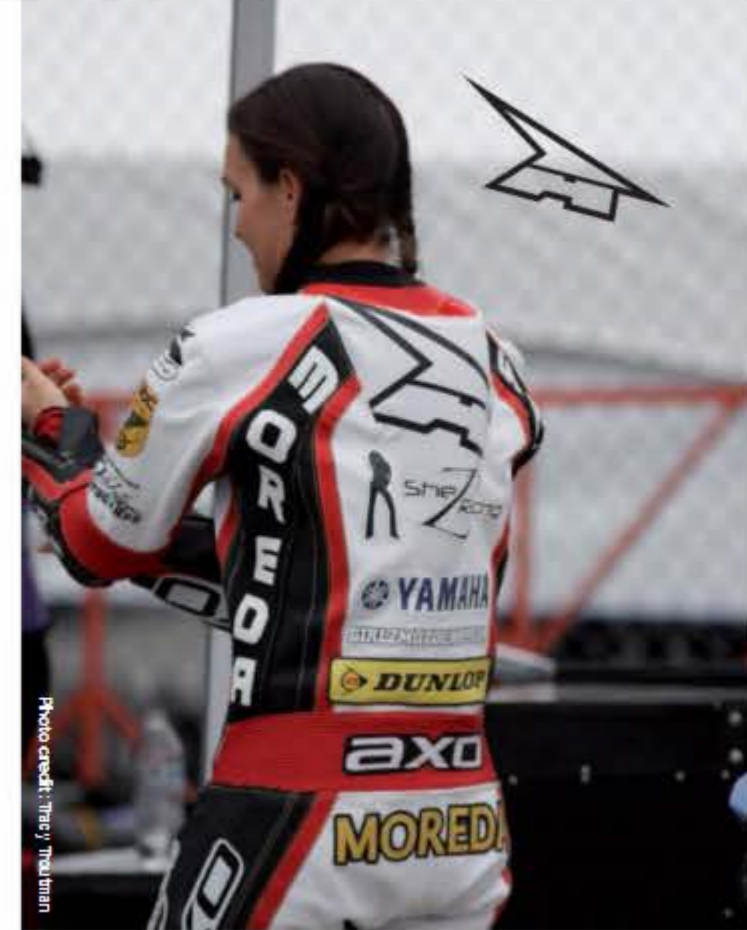


Photo credit: The Y Team

# TALON LADY

- Full grain cowhide leather
- Anti-bacterial and anti-sweat removable polyester lining with elastic Inserts
- Unique stretch panels that allow flexibility and comfort
- Hip padding
- CE approved protectors on shoulders, elbows and knee/shin area
- Streamlined back hump



SKU	Color	US size
33003-05	BLACK	40 42 44 46 48

# ARIA MESH WP

- High tenacity polyester construction
- Watertech membrane
- Extensive areas of mesh outer fabric
- Anti-bacterial and anti-sweat polyester liner
- Reflective prints for added visibility
- Large internal and external pockets
- Arms and waist adjustments



SKU: 45002-55 45002-58  
Color: BLACK BLACK/GRAY  
US size: S M L XL XXL XXXL S M L XL XXL XXXL







# MONSTER

- ✓ High tenacity polyester construction
- ✓ Soft Inner collar
- ✓ Anti-bacterial and anti-sweat mesh polyester liner
- ✓ Removable sleeves
- ✓ Reflex Inserts and prints for added visibility
- ✓ CE approved elbow and shoulder cups



SKU:	Color:	US size:					
45300-25	RED/BLACK	S	M	L	XL	XXL	XXXL
45300-35	BLUE/BLACK	S	M	L	XL	XXL	XXXL
45300-55	BLACK	S	M	L	XL	XXL	XXXL

# CARDINAL

- ✓ Outer shell made of high tenacity polyester fabric
- ✓ Waterproof membrane
- ✓ Removable Inner quilted vest
- ✓ Large internal and external pockets
- ✓ Removable CE approved shoulder and elbow cups



SKU:	Color:	US size:					
45201-05	BLACK	S	M	L	XL	XXL	XXXL

# FIGHT

- ✔ Goat leather racing glove
- ✔ Hard resistant plastic knuckles covered with perforated leather
- ✔ Anti slide silicon printing on fingers and palm for a better grip
- ✔ Padding on top, palm and cuff
- ✔ Elastic ribs on top and fingers to ease the movements
- ✔ High visibility reflective Insert
- ✔ Double adjustable cuff
- ✔ hook and loop fastener closure



SKU:	Color:	US size:							
32016-50	BLACK/WHITE	7	8	9	10	11	12	13	
32016-51	BLACK/FLUO-YELLOW	7	8	9	10	11	12	13	
32016-52	BLACK/RED	7	8	9	10	11	12	13	

# PRO RACE XT

- ✔ Perforated leather top
- ✔ Carbon knuckle protectors
- ✔ hook and loop fastener cuff closure
- ✔ Reflective logos
- ✔ Reinforced palm

**NEW**  
COLORS



SKU:	Color:	US size:							
32011-00	BLACK/WHITE	7	8	9	10	11	12		
32011-02	BLACK/RED	7	8	9	10	11	12		
32011-51	BLACK/FLUO-YELLOW	7	8	9	10	11	12		
32011-05	BLACK	7	8	9	10	11	12	13	





# ST-X

- Full fabric design
- Padded synthetic palm
- Carbon fiber knuckle protection
- Neoprene cuff and wrist with ventilated stretch lycra fingers
- Soft and flexible TPR graphics



SKU: 32012-05 | Color: BLACK | US size: 8 9 10 11 12

# NORTH DRYDER WP



- Winter gloves with waterproof membrane
- Adjustable cuff closure
- Reflective printing
- Hard TPU knuckle protectors



SKU: 32200-05 | Color: BLACK | US size: 8 9 10 11 12

# OXFORD DRYDER 2 PIECE RAINSUIT

- 100% waterproof two-piece PVC suit with taped seams
- Reflective AXO logos
- Easy to carry pouch



SKU: 70301-05 | Color: BLACK | US size: S M L XL XXL XXXL





# TRAIL



## JERSEY

- ✔ Solid dyed fabric short sleeved Jersey
- ✔ Mesh panels for added ventilation
- ✔ Front zipper for customizable fit and comfort
- ✔ Large rear zipped pocket
- ✔ Side zipped security pocket

## SHORTS

- ✔ Durable and lightweight polyamide shorts
- ✔ Reinforced saddle contact area
- ✔ Breathable, zipped vents
- ✔ Large front and rear pockets
- ✔ Side zipped security pocket
- ✔ Rear stretch panel with thigh and waist adjustments

SKU: 54000-58 | Color: BLACK | US size: XS S M L XL XXL

SKU: 53000-58 | Color: BLACK | US size: 28 30 32 34 36 38 40 42



# GRAPHITE KNEE PADS



- ✓ Elastic mesh fabric guarantees breathability
- ✓ Polyethylene Inner pad
- ✓ Silicon Inserts for grip
- ✓ Elastic and hook and loop fastener closure
- ✓ Exceptional comfort and fitting



SKU: 56003-54 | Color: BLACK | US size: S M L XL

# BERM

- ✓ Top strap is an A-top micro adjustable buckle
- ✓ Two bottom straps are hook and loop fastener for an adjustable fit
- ✓ Reinforced toe
- ✓ SPD Compatible
- ✓ Perforation for added ventilation



SKU: 51000-00 | Color: WHITE | US size: 5 6 7 8 9 10 11 12  
 51000-05 | Color: BLACK | US size: 5 6 7 8 9 10 11 12

# HF1 KNEE PADS

- ✓ Designed to protect the shin and patella with durable plastics
- ✓ Anatomic patterns and sizes
- ✓ Can be used separately for the patella or the shin when needed
- ✓ Adjustable length and straps for the perfect fit



SKU: 56002-50 | Color: BLACK | US size: M L

# TMKP DH

- ✓ Patented design features uniquely made by AXD
- ✓ Removable shin extension
- ✓ Blofoam liner
- ✓ Comfortable fit with adjustable straps
- ✓ Designed to protect the areas of Impact on for the knee and upper shin



SKU: 56000-05 | Color: BLACK | US size: M L



# AXO TEES

- 100% cotton
- Comfortable fit for everyday use
- Different styles for any casual occasion

## MOTO



SKU: 24023-00 Color: WHITE  
24023-55 Color: BLACK

US size: S M L XL  
S M L XL

## FILM



SKU: 24025-00 Color: WHITE  
24025-55 Color: BLACK

US size: S M L XL  
S M L XL

## CORPORATE KIDS



SKU: 24021-02 Color: RED  
24021-03 Color: BLUE

US size: M L XL  
M L XL

## SPORT



SKU: 24024-22 Color: RED  
24024-55 Color: BLACK

US size: S M L XL  
S M L XL

## FILM TANK



SKU: 24026-00 Color: WHITE

US size: S M L XL

## TEAM

- 100% polyester
- AXO logos on chest, sleeve, and back
- Short sleeves
- Generous fitting
- Completely customizable



SKU: 18000-32 Color: BLUE/RED/WHITE

US size: S M L XL XXL

## BLOCK

- Soft polyester cotton



SKU: 24027-00 Color: WHITE  
24027-33 Color: BLUE

US size: S M L XL XXL  
S M L XL XXL

## FLAG

- Soft polyester cotton



SKU: 24028-00 Color: WHITE  
24028-55 Color: BLACK

US size: S M L XL XXL  
S M L XL XXL





## CORPORATE BEANIE

- ✔ Soft ribbed for a comfortable fit and feel
- ✔ One size fits all



SKU:	Color:	US size:
28100-05	BLACK	ONE SIZE
28100-08	GRAY	ONE SIZE

## CAPER HAT

- ✔ Adjustable sizing with rear strap



SKU:	Color:	US size:
18722-08	SILVER	S L XL

## RACING HOODIE

- ✔ All new AXO designed sweatshirt now available in kids sizes!
- ✔ Soft warm cotton construction with lined hood



ADULT		
SKU:	Color:	US size:
25003-83	GRAY/BLUE	S M L XL XXL
JUNIOR		
SKU:	Color:	US size:
25004-83	GRAY/BLUE	S L

## CORPORATE FLEXFIT HAT

- ✔ Reflective slide logo/ 3D embroidery logo



SKU:	Color:	US size:
28002-20	WHITE/RED	S/M L/XL
28002-30	BLUE/WHITE	S/M L/XL
28002-50	BLACK/WHITE	S/M L/XL
28002-86	GRAY/FLUO ORANGE	S/M L/XL

## RUNNING A SHOE

- ✔ Vented upper mesh with polyurethane reinforcement on toe and counter
- ✔ Breathable and anti-allergic lining
- ✔ Removable and anti-bacterial foot bed
- ✔ Anti-slip rubber sole
- ✔ Designed with lightweight materials to provide maximal comfort and production



SKU:	Color:	US size:
21000-34	BLUE/LIME	7.5 8 9 10 10.5
21000-56	BLACK/ORANGE	7.5 8 9 10 10.5
21000-82	GREY/RED	7.5 8 9 10 10.5





# ACCESSORIES

## AXO CANOPY

- 10' x 10' AXO Blue/White Canopy
- Aluminum frame
- Top cover included



SKU: 00011-03-000  
Color: BLUE  
Size: 10x10

## POWER PLASTIC BUCKLE

- Replacement buckle kit for all Drone boots
- Easy to open and close



SKU: 90451-11  
Color: BLACK #1 2/3 4  
90451-22  
Color: BLACK-RED #1 2/3 4  
90451-52  
Color: FLUO-YELLOW #1 2/3 4

## AXO CANOPY COVER

- 10' x 10' AXO Blue/White Canopy Cover
- Fits most canopy frames
- Frame not included
- Can be used as replacement cover



SKU: 00012-03-000  
Color: BLUE  
Size: 10x10

## RAIN PONCHO

- Ultralight wet weather protection



SKU: 15901-00  
Color: CLEAR  
Size: S L XL

## POWER METAL BUCKLE

- The Power Metal buckles can be used to replace any buckle and strap from the RCG boots and beyond
- Alloy lever
- Easy to open and close
- Optimized for use in the dirt



SKU: 90550-05  
Color: BLACK #1 2/3 4

## AXO BANNER

- 24" x 48" Blue/White AXO Banner
- Ideal for race tracks, garages, bedrooms, and more



SKU: 00004-03-000  
Color: BLUE/WHITE  
Size: 24inx48in

## PERFIT INSOLES

- For a perfect fit
- Works with any AXO footwear



SKU: 90000-01  
Color: CLEAR  
Size: 5/6 7/8 9/10 11/12 13/14

## TRAILER STICKER RETRO

- Vinyl AXO trailer sticker
- Ideal for use on cars, trailers, trucks and more
- Transparent background with black outline on lettering
- Easy to put on and easy to take off
- 24" x 5.6"



SKU: 00013-05-000  
Color: BLACK  
Size: 24in x 5.6in

## DART BUCKLE

- Replacement buckle kit for Dart and Dart Pro MX boots



SKU: 90450-05  
Color: BLACK #1 2 3 4

## BOXER BUCKLE



SKU: 90450-02  
Color: RED  
Size: #1 2 3 4

## POWER PRIME BUCKLE KIT

- Buckle kit includes 4 buckles
- Works with majority of recent AXO boots



SKU: 90550-09-000  
Color: SAND #1 2 3 4  
90550-85-000  
Color: BLACK/SILVER #1 2 3 4

## TRADITIONAL MX OUTSOLE

- Replacement outer sole for AXO MX Boots
- M: 5-7.5 US, 38-41 EU
- L: 8-9 US, 42-43 EU
- XL: 10-15 US, 44-49 EU



SKU: 90100-05  
Color: BLACK/RED  
Size: M L XL

## METAL TOE CAPS

- Replacement toe caps for MX boots
- Parts included



SKU: 90200-00-000  
Color: SILVER  
Size: ONE SIZE

## PRIMATO UPPER SLIDER

- PU injected shin plate sliders
- Replacement slider for pre-2013 Primato boot models



SKU: 90070-00-000  
Color: BLACK  
Size: ONE SIZE

## AXO LANYARD

- Black/Blue/White AXO Lanyard
- Detachable key-ring
- Great way to show your passion and support for riding with AXO



SKU: 00016-53-000  
Color: BLACK/BLUE  
Size: ONE SIZE

## KNEE SLIDERS



SKU: 90800-05-000  
Color: BLACK  
Size: HOOK LOOP  
90801-05-000  
Color: BLACK  
Size: LOOP

## PRIMATO TITANIUM SLIDER

- Replacement slider kit for Primato, Aragon and Lancer boots
- Includes base and screws for replacement



SKU: 90040-05-000  
Color: SILVER  
Size: ONE SIZE

## AXO PIT UMBRELLA

- Blue/White AXO Pit Umbrella
- Ideal for use at the race track or even on any rainy day
- Easy to store and made with lightweight materials



SKU: 27000-30-000  
Color: BLUE/WHITE  
Size: ONE SIZE

## AXO KEYCHAIN

- Black/Blue rubber AXO keychain



SKU: 00029-53-000  
Color: BLACK/BLUE  
Size: ONE SIZE

## ARAGON HEEL INSERTS

- Steel heel insert kit for Aragon boots



SKU: 90060-09  
Color: SILVER  
Size: ONE SIZE

## PRIMATO PLASTIC SLIDER KIT

- Replacement plastic slider kit for Primato, Primato II and Aragon boots
- Includes plastic base and screws for replacement



SKU: 90050-05-000  
Color: GREY  
Size: ONE SIZE

## AXO TRACK FLAG

- 2.5 meters tall
- Ideal for race tracks
- Includes ground mount



SKU: 00006-03-000  
Color: BLUE/WHITE  
Size: 3.5m w/ground

