

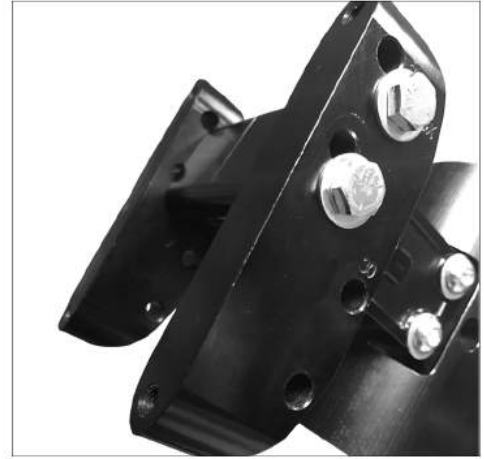
AMERICAN SUSPENSION Fairing Mount (FM-13) INSTALLATION GUIDE



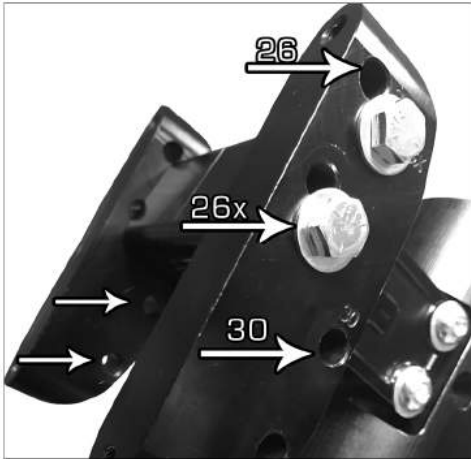
1 Take 3/8-16z3-1/2 and 3/8-16z7 bolts and place washers into the four bolts.



2 Attach the center block mounts to the neck with 3/8-16z3-1/2 bolts, washers, and lock nuts.



3 Attach the wings to the neck with 3/8-16x7" bolts and washers.



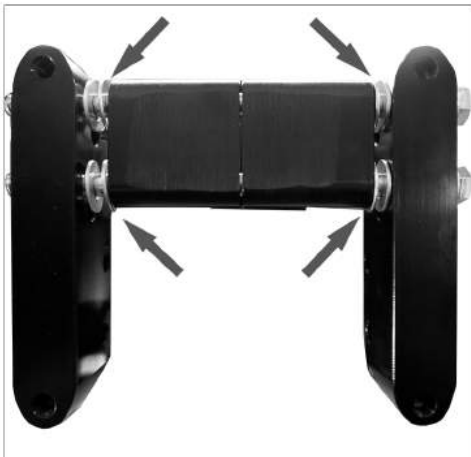
4 Adjust the fairing mount wing bolts based on your wheel size (26", 26x", 30"). 26X is the most common fitment for 26" wheels



5 Torque with 3/8" allen wrench and socket to 25ft.-lbs.



6 Attach inner fairing to the front of the mount and tighten bolts.



7 If experiencing issues with fairing alignment, use shims to adjust wings for perfect fitting.