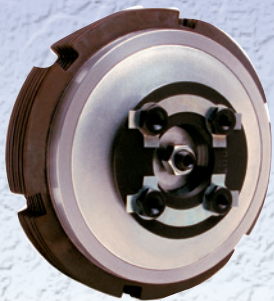




American Prime Mfg.[®]

COMP MASTER™ CLUTCHES

PROUDLY MADE IN THE UNITED STATES OF AMERICA



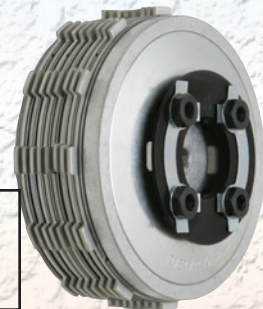
1056-0002~FITS ALL PRE-EVO BIG TWIN (1936-84). WITH EARLY DRY STYLE CLUTCH.



1056-0005~FITS 1990-1997 BIG TWIN WITH PRIMARY CHAIN DRIVE.



1056-0006~FITS 1998 - 2006 EVO & TWIN CAM BIG TWIN EXCEPT 2006 DYNA MODELS.



1056-0020~FITS 2006 DYNA MODELS & 2007-2010 BIG TWIN MODELS WITH CABLE ACTUATED CLUTCH.



1056-0007~FITS 1991-PRESENT 5-SPD EVO XL SPORTSTER MODELS & 1991-2002 BUELL MODELS EXCEPT BUELL BLAST.



1056-0027~FITS 2011 - 2016 BIG TWIN MODELS* WITH HD HYDRAULIC CLUTCH.

1056-0026~FITS 2011 & LATER BIG TWIN MODELS W/ CABLE ACTUATED CLUTCH.



American Prime Manufacturing WAS STARTED DUE TO A LACK OF CERTAIN PRODUCT LINES IN THE MOTORCYCLE AFTERMARKET. MANY PEOPLE WERE CRYING OUT FOR THE PRODUCTS YOU SEE ON THESE PAGES AND THERE WAS NONE TO BE HAD ANYWHERE. SO, IN TRUE AMERICAN SPIRIT WE DECIDED TO BE THE KNIGHT IN SHINING ARMOR AND COME TO THE RESCUE! OUR GOALS ARE SIMPLE; PROVIDE THE HIGHEST QUALITY PRODUCTS WITH A GREAT WARRANTY. ALL OUR PRODUCTS ARE WARRANTED TO THE ORIGINAL PURCHASER TO BE FREE FROM MANUFACTURER DEFECTS OR THE PRODUCT WILL BE REPLACED AT NO CHARGE TO THE CUSTOMER!



1053-0009 or 1053-0012
Comp Master™ Clutch &
Basket Kit w/ Ring Gear &
36 or 37 Tooth sprocket



1053-0022 Clutch Basket
w/ Comp Master™ Clutch &
106 Tooth Ring Gear & 46
Tooth Sprocket



1104-0001 MASTER COMP™ ADVANCE ASSEMBLY KIT
WITH STAINLESS STEEL BASE/POST. INCLUDES CENTER
BOLT.



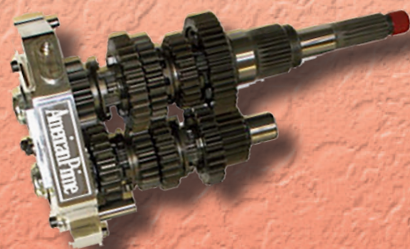
2014-0002 ALTERNATOR SHROUD KIT POLISHED.

2122-0031 ALTERNATOR SHROUD KIT AS CAST

FITS 1970-2006 BIG TWIN EXCEPT 2006 DYNA. IN-
CLUDES BOLTS!



1120-0002 TRANSMISSION BEARING SUPPORT (REAR
CHAIN DRIVE ONLY). FITS 1970-1978 4 SPEED. INCLUDES
BEARING!



1216-0001 COMPLETE COMP MASTER™ 6 SPEED CLOSE RATIO LSD
GEAR SET WITH TRAP DOOR ASSEMBLED ON MAINSHAFT &
COUNTERSHAFT. INCLUDES SHIFTER DRUM, SHIFTING AS-SEMBLY,
SHIFTER FORKS, BEARINGS & CHROME TOP COVER. FITS LSD 5 SPEED BIG
TWIN TRANSMISSIONS EXCEPT 2006 DYNA MODELS & AFTERMARKET 6
SPEED TRANS. CLOSE RATIO 2.94:1 FIRST GEAR; SECOND GEAR 2.21;
0.860:1 OVERDRIVE SIXTH GEAR. FORGED AND BACK CUT GEARS FOR
POSITIVE SHIFTING.

If you're looking for quality motorcycle ignition system parts, visit our website.