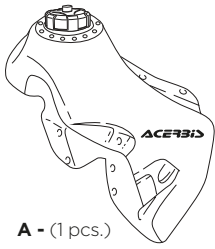


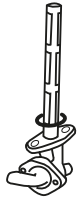
SERBATOIO YAMAHA YZ/WR 125 / 250 12L

COD. 500000079 REV.5

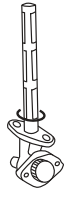
ACERBIS PARTS



A - (1 pcs.)



B - (1 pcs.)



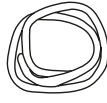
C - (1 pcs.)



D - (4 pcs.)



F - (1 pcs.)



E - (1 pcs.)



H - (5 pcs.)



G - (1 pcs.)

O.E.M ITEMS TO USE:



I - (1 pcs.)



M - (4 pcs.)



L - (2 pcs.)

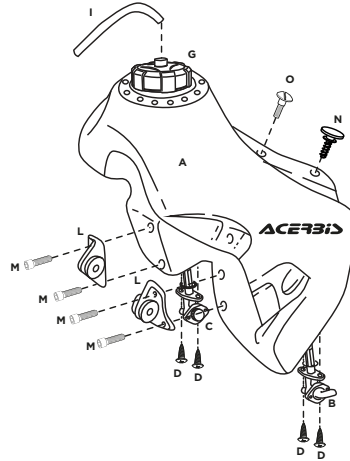


N - (1 pcs.)



O - (1 pcs.)

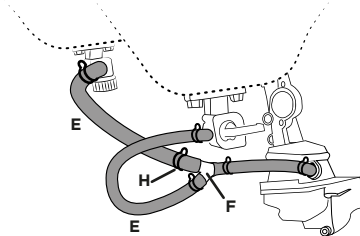
1.



Dismount the original fuel tank. Attach to the Acerbis fuel tank (A), the petcock (B) on left side of the fuel tank and, (C) on right side of the fuel tank using the screws (D) and the gasket provided in the kit. Tighten original mounts (L) with the original screws (M). Position the fuel tank (A) on the motorcycle and fasten it to the frame tightening the mounts (L). Apply the original screws (N) and (O). Apply the Acerbis cap (G) and the vent hose (I).

For the metal inserts contained in the fuel tank a maximum torque setting should not exceed 8 Nm.

2.



Cut the fuel line (E), connect two petcocks with Y plastic connector (F), and the carburetor, and attach the fuel line with hose clamps (H).

WARNING!

Clean tank interior thoroughly before installation. install this fuel tank only in a well ventilated area, as gasoline fumes are extremely dangerous. do not start operate the vehicle if there are any fuel leaks! acerbis recommends that installation be done by licensed mechanic. read all instructions first before beginning installation.

DISCLAIMER:

DISCLAIMER: Due to uncontrolled variables in the manufacturing process of rotationally molded fuel tanks, the fuel tank may vary in size and shape by up 7% of the manufacturer's original listed capacity.