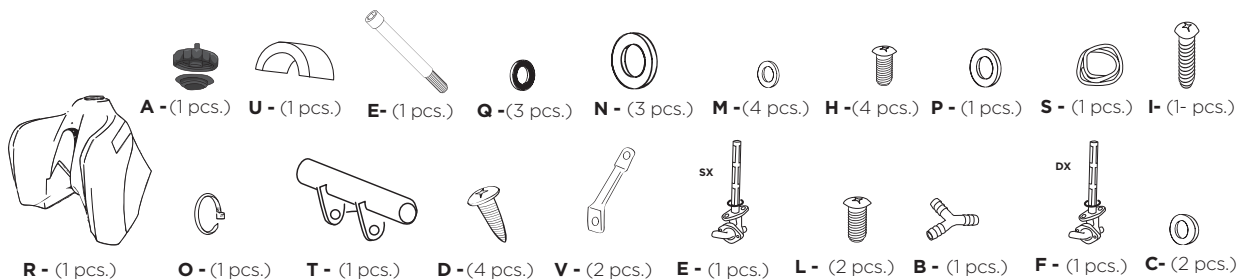
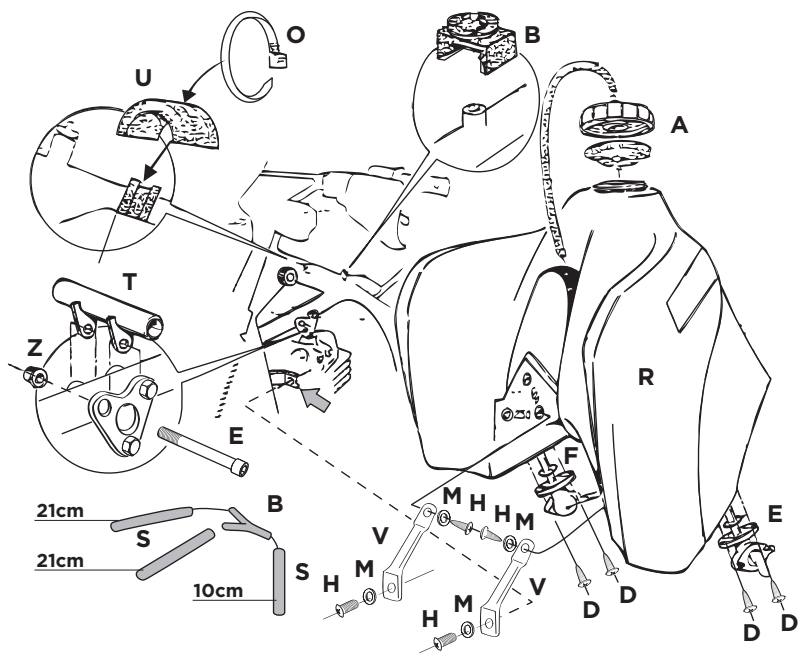
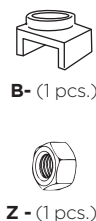


COD. 000004919 REV.3

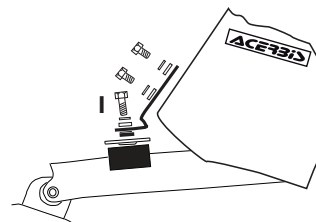
ACERBIS PARTS



O.E.M ITEMS TO USE:



**Fissaggio posteriore
Rear mounting**



Remove rubber support (B) from the original tank and mount it on the frame. Install rubber support (U) on the frame with the clamp (O) (see drawing). Remove original bolt and fix spacer (E) on the frame with bolt (Z) contained in the imounting kit, and original nut (T). Install support (V) on ACERBIS tank with bolts (H) and washers (M) as shown in the drawing. Install petcocks E-F with gaskets and screws (D) then put the tank Acerbis on the bike. To better position the tank, enlarge the two lower ends. Tighten bolt (H) with the spacer (P) and fix supports (H) with bolts (I) and washers (M).

Connect petcocks E-F to the carburetor using Y fitting (B) and the fuel line (S), cut in the indicated lenght. Fasten cap (A) with the rubber tube (S) left.

DISCLAIMER:

DISCLAIMER: Due to uncontrolled variables in the manufacturing process of rotationally molded fuel tanks, the fuel tank may vary in size and shape by up to 7% of the manufacturer's original listed capacity.

FOR COMPETITION USE ONLY