



INSTALLATION INSTRUCTIONS

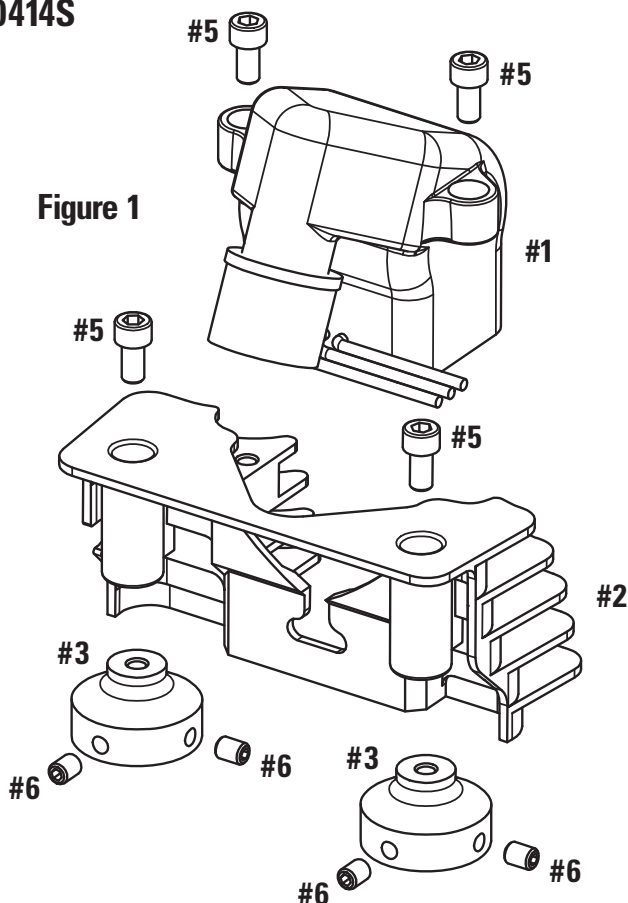
ACCEL Stealth SuperCoil Kit for Sportster Motorcycles

Kit Part Numbers 140414B, 140414N and 140414S

Kit Part Numbers 140414B, 140414N and 140414S are designed for 2007-Up Fuel Injected Harley Davidson Sportsters.

Kit Contents (see figure 1)

1. (2) Ignition coil assembly
2. (2) Cast aluminum coil cover
3. (4) Cast aluminum head stud mount
4. (1) Coil extension harness (not shown)
5. (8) Socket head cap screw
6. (8) Set screw
7. (1) Blue thread lock (not shown)
8. (4) Cable ties (not shown)
9. (1) 3/32" hex key wrench (not shown)
10. (1) 5/32" hex key wrench (not shown)



INSTRUCTIONS (Refer to Figure 1 Above)

1. Remove the seat and covers to access the battery. Disconnect the negative battery cable from the battery.
2. Remove the tank to gain easy access to the ignition coil. Unplug the stock ignition coil and spark plug wires and remove them completely from the motorcycle.
NOTE: Depending on the model of Sportster and accessories, you may be able to access the stock HD ignition coil without removing the gas tank and just pivoting it upwards.
3. Apply a small amount of the supplied blue thread lock to the (8) set screws and loosely install (2) set screws into each of the (4) cast aluminum head stud mounts.
4. Place the cast aluminum head stud mounts on top of the 4 exposed head studs and fasten the set screws securely using the provided 3/32" hex key wrench (**figure 2 on pg 2**).
5. Install one ignition coil assembly (#1) into the cast aluminum coil cover (#2) using 2 socket head cap screws (#5), applying blue thread lock (#7). Use the 5/32" hex key wrench to tighten them securely (**figure 2 on pg 2**). Route the coil wires thru the notch in the cast coil cover. Repeat the same steps for the second coil assembly.
6. Install the front coil and cover assembly directly onto the front spark plug and head stud mounts. **NOTE: The front and rear coil covers are different and can easily be identified by the location of the notch (figure 4 on pg 2). The notch on the front cover should face the rear**

of the bike and the notch on the rear cover should face the front of the bike. Route the coil wires loosely between the fins of the cylinder head adjacent to the notch in the coil cover continuing up between the cylinders.

7. Apply a small amount of the supplied blue thread lock to the (4) socket head cap screws. Insert the socket head cap screws through the hole in the top of the coil cover, align with threaded hole in the top of the head stud mount and fasten securely using the supplied 5/32" hex key wrench
8. Repeat steps 6 and 7 with the remaining rear coil and cover assembly.
9. Connect the 4-pin plug on the supplied coil extension harness to the coil connector on the bikes wiring harness. Route the coil extension harness along the backbone of the frame so that the two coil connectors (labeled front cyl/rear cyl) drop down between the cylinders behind the throttle body. Secure the coil extension harness to the backbone of the frame using the supplied cable ties.
10. Connect the coil harness from the front cylinder to the connector on the coil extension harness labeled "Front cyl". Connect the coil harness from the rear cylinder to the connector on the coil extension harness labeled "Rear cyl".
11. Installation of the ACCEL Stealth SuperCoils is now complete. Reconnect your negative battery cable, reinstall your tank and seat, and let's ride!

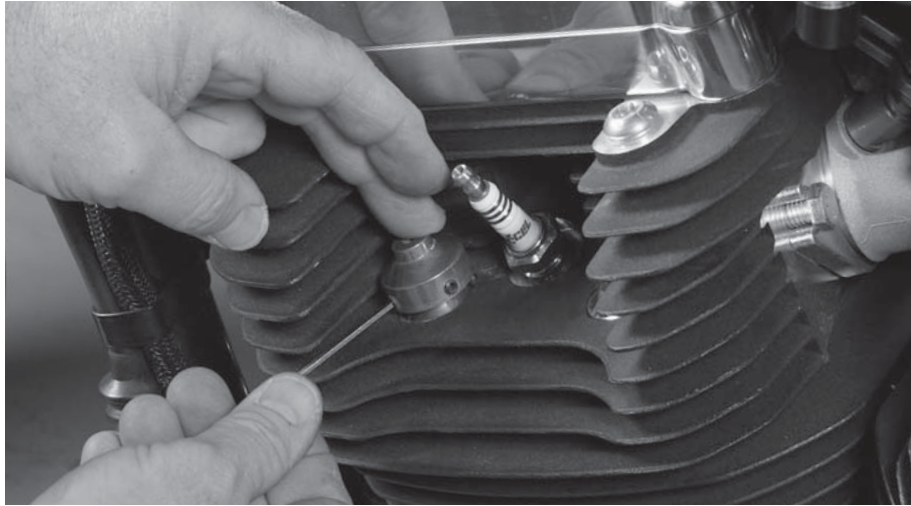


Figure 2

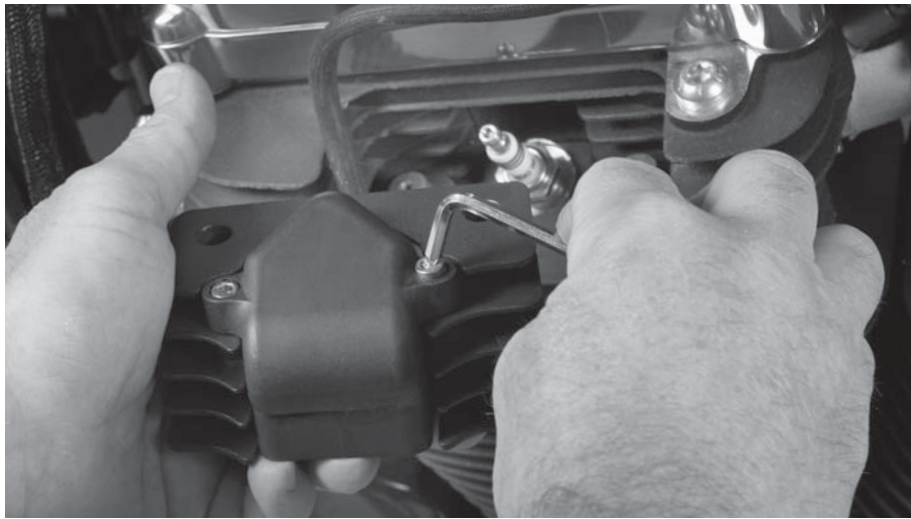


Figure 3



Figure 4